

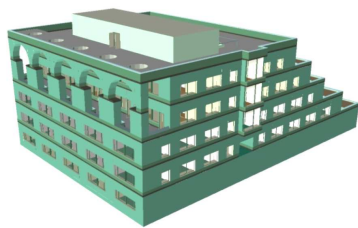
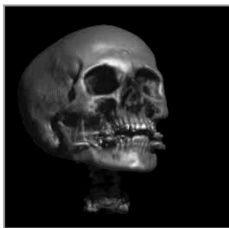
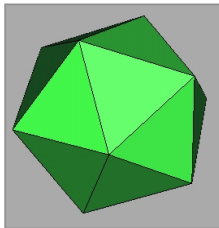
Structuring 3D Geometry based on Symmetry and Instancing Information

Aurelien MARTINET

May 14, 2007

3D Geometry

Representation



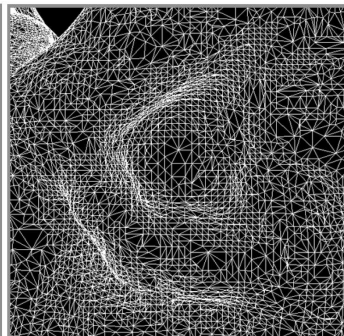
Question

How can these objects be represented in a computer ?

3D Geometry

Representation

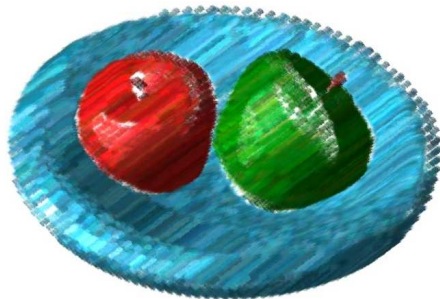
- 3D Geometry represented as a collection of polygons



3D Geometry

Treatments

- Rendering
- Animation
- Editing



3D Geometry

Treatments

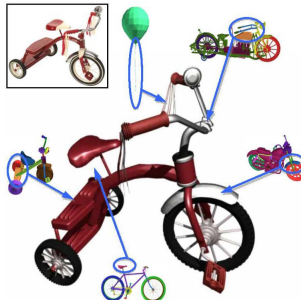
- Rendering
- Animation
- Editing



3D Geometry

Treatments

- Rendering
- Animation
- Editing



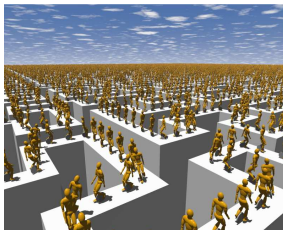
Motivations

Observations

Fact

Structure of Geometry is a key to Efficiency

- *Improve rendering speed*
- *Reduce memory usage*
- ...



Motivations

Observations

Fact

*3D Geometry is often **unstructured***



***Structural Information** is not accessible*

Raises two important questions:

- 1 What is Structural Information ?
- 2 Why is it not accessible ?

Motivations

Observations

Fact

*3D Geometry is often **unstructured***



***Structural Information** is not accessible*

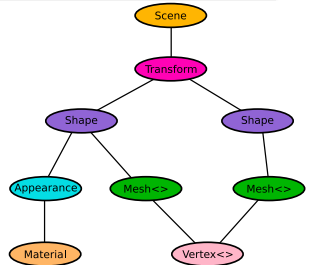
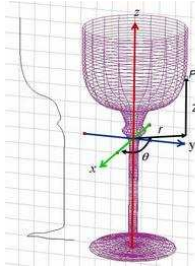
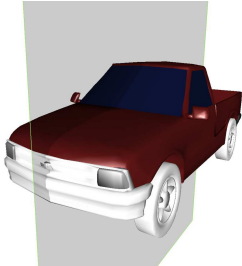
Raises two important questions:

- 1 What is Structural Information ?
- 2 Why is it not accessible ?

Structural Information

Generalities

- In Computer Graphics:
 - Symmetry Group of a Shape
 - Parameters of a Revolution Surface
 - Scene-Graph
 - ...



Accessibility of Structural Information

Fact

Structural Information is not accessible

Sources of Problems

- Asset Exchange
- Non-Interactive Modeling Techniques

Accessibility of Structural Information

Asset Exchange



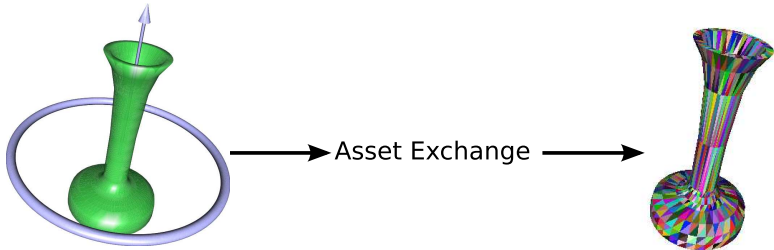
- Exchanging assets is a major problem:
 - Constraints due to multiple platforms, software and file formats
 - Must **ideally** preserve *the structure* of the geometry

Accessibility of Structural Information

Asset Exchange

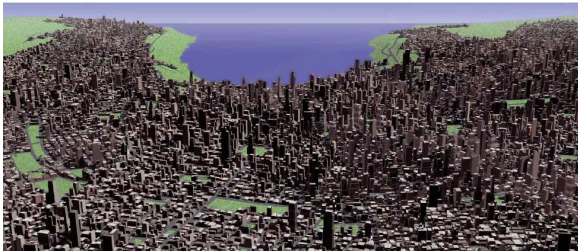


- Exchanging assets is a major problem:
 - Constraints due to multiple platforms, software and file formats
 - Must **ideally** preserve *the structure* of the geometry



Accessibility of Structural Information

Non-Interactive Modeling Techniques



Pros

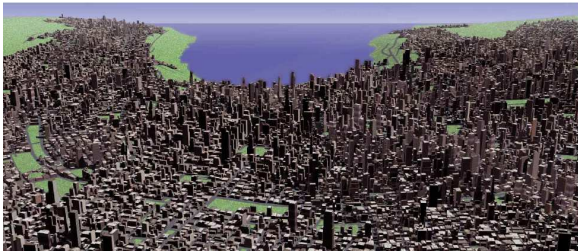
- Reach High-Complexity

Cons

- Unstructured Output

Accessibility of Structural Information

Non-Interactive Modeling Techniques



Pros

- Reach High-Complexity

Cons

- **Unstructured Output**

Structural Information

Scene and Objects

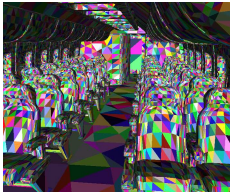
Structural Information as a **two-scale notion**:

- Object Level
- Scene Level

Approach

Pipeline and Outline

- A three-stage pipeline:



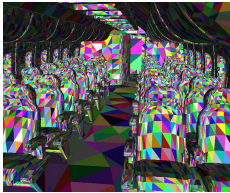
Unstructured
3D Geometry



Approach

Pipeline and Outline

- A three-stage pipeline:



Unstructured
3D Geometry



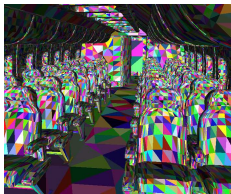
Pre-Processing
3D Geometry



Approach

Pipeline and Outline

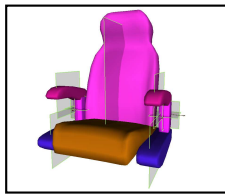
- A three-stage pipeline:



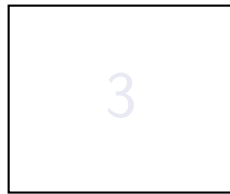
Unstructured
3D Geometry



Pre-Processing
3D Geometry



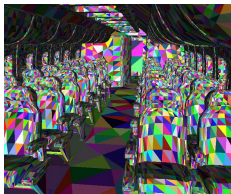
Object Level:
Symmetry



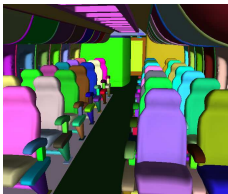
Approach

Pipeline and Outline

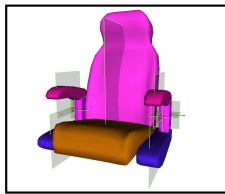
- A three-stage pipeline:



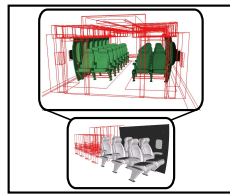
Unstructured
3D Geometry



Pre-Processing
3D Geometry



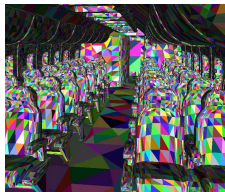
Object Level:
Symmetry



Scene Level:
Instancing

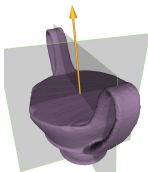
Contributions

- 1 A new way of partitioning unstructured geometry
- 2 Original methods to compute Symmetries of 3D Shapes
 - Algorithm for single shapes
 - Algorithm for composite shapes
- 3 A new shape congruency descriptor
- 4 Original method to represent 3D geometry as a hierarchy of instances

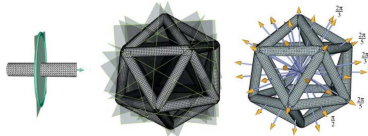


Contributions

- 1 A new way of partitioning unstructured geometry
- 2 Original methods to compute Symmetries of 3D Shapes
 - Algorithm for single shapes
 - **Algorithm for composite shapes**
- 3 A new shape congruency descriptor
- 4 Original method to represent 3D geometry as a hierarchy of instances



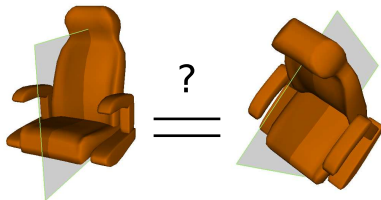
Single Shape



Composite Shape

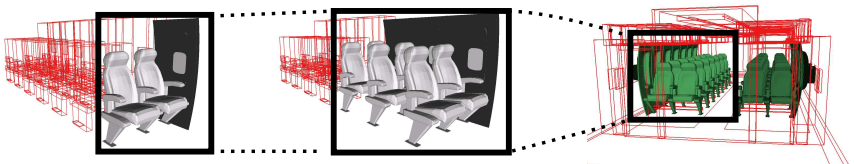
Contributions

- 1 A new way of partitioning unstructured geometry
- 2 Original methods to compute Symmetries of 3D Shapes
 - Algorithm for single shapes
 - **Algorithm for composite shapes**
- 3 **A new shape congruency descriptor**
- 4 Original method to represent 3D geometry as a hierarchy of instances



Contributions

- 1 A new way of partitioning unstructured geometry
- 2 Original methods to compute Symmetries of 3D Shapes
 - Algorithm for single shapes
 - Algorithm for composite shapes
- 3 A new shape congruency descriptor
- 4 Original method to represent 3D geometry as a hierarchy of instances



Objective

Question

What is an Object ?

Generalities

- Ill-Defined Notion
- Large Number of Possibilities

In this thesis, we define Objects as **Tiles**

Objective

Question

What is an Object ?

Generalities

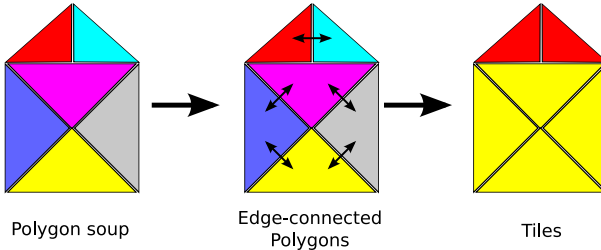
- Ill-Defined Notion
- Large Number of Possibilities

In this thesis, we define Objects as **Tiles**

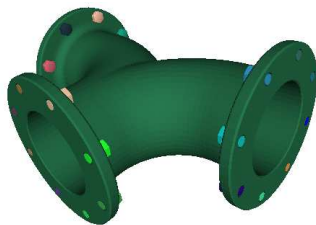
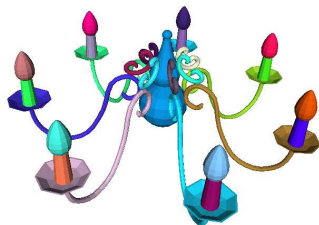
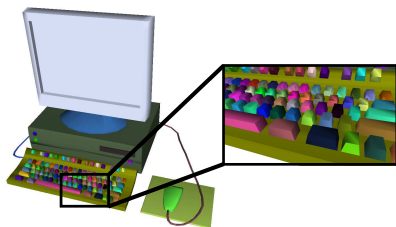
Tiles: Definition and Construction

Definition

A tile is a maximal set of edge-connected polygons

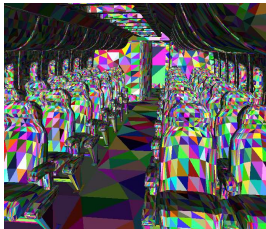


Examples of Tiles Decomposition



Computational-Friendly: Less than 2 minutes for 13M Polygons.

Summary



Pre-Processing
3D Geometry

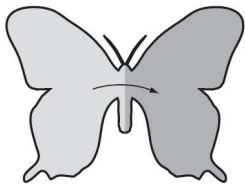


- Polygon Soup is now a **Set of Tiles**
- Next step is to compute **the Symmetries of each Tile.**

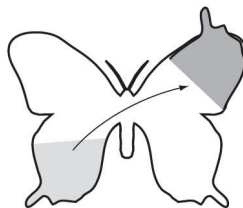
Problem Statement

Objectives

- Detect **global symmetries** of a 3D Shape
- Independent of Shape Tessellation



Global
Symmetry

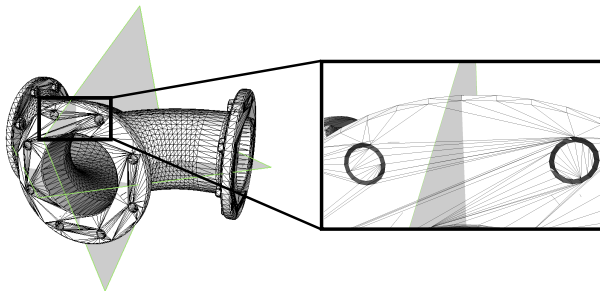


Local
Symmetry

Problem Statement

Objectives

- Detect **global symmetries** of a 3D Shape
- Independent of Shape Tessellation

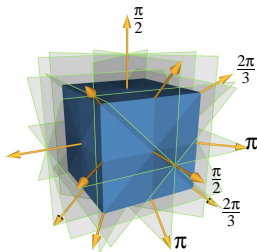


Problem Statement

Definition

Finding a symmetry of a shape \mathcal{S} is equivalent to find an isometry $A = (\mathbf{X}, \alpha)$, such that:

$$A\mathcal{S} = \mathcal{S}$$



Problem Statement

Question

How efficiently found parameters of symmetries of a 3D Shape ?

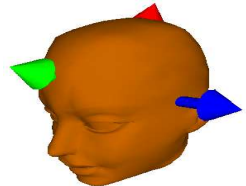
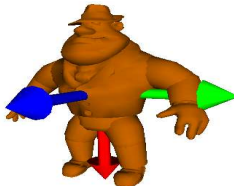
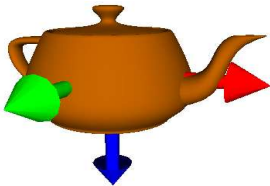
Approach

Our approach *extends* **PCA-Based Approach**:

- 1 What is PCA-Based Approach ?
- 2 What are its limitations ?
- 3 Our approach: The Generalized Moment Functions

PCA-Based Approach

- Principal Component Analysis (PCA)
 - Used to affect a local frame to a 3D Shape,
 - called **Principal Axes**



PCA-Based Approach

Fundamental Idea [Minovic, 1993]

ω is a **Symmetry Axis** of \mathcal{S}



ω is a **Principal Axis** of \mathcal{S}

The Method

- 1 Compute principal axes of the shape
- 2 Check each axis for a symmetry

PCA-Based Approach

Problems

What happens if principal axes are **not uniquely** defined ?

Properties of Principal Axes

- Along direction of **maximum variance**
- Unicity **only if** extrema are strict

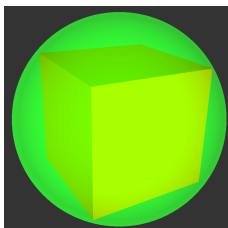
PCA-Based Approach

Problems

What happens if principal axes are **not uniquely** defined ?

Properties of Principal Axes

- Along direction of **maximum variance**
- Unicity **only if** extrema are strict



The Generalized Moment Functions

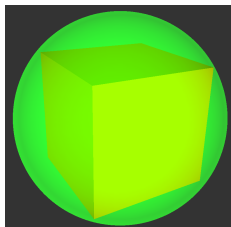
Variance Function *a.k.a.*
Moment of Order 2

$$\mathcal{M}^2(\omega) = \int_{\mathbf{s} \in \mathcal{S}} \|\mathbf{s} \times \omega\|^2 d\mathbf{s}$$



Generalized Moment of Order k

$$\mathcal{M}^k(\omega) = \int_{\mathbf{s} \in \mathcal{S}} \|\mathbf{s} \times \omega\|^k d\mathbf{s}$$



\mathcal{M}^2

The Generalized Moment Functions

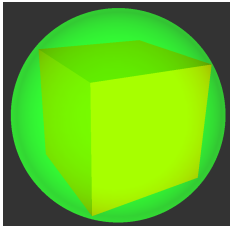
Variance Function *a.k.a.*
Moment of Order 2

$$\mathcal{M}^2(\omega) = \int_{s \in \mathcal{S}} \|\mathbf{s} \times \omega\|^2 ds$$

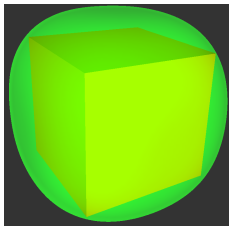


Generalized Moment of Order k

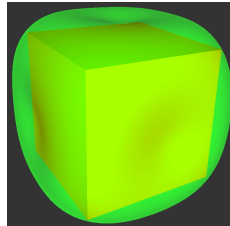
$$\mathcal{M}^k(\omega) = \int_{s \in \mathcal{S}} \|\mathbf{s} \times \omega\|^k ds$$



\mathcal{M}^2



\mathcal{M}^4



\mathcal{M}^6

Definition

Property 1 of \mathcal{M}^k

Isometry A is a symmetry of \mathcal{S}



Isometry A is a symmetry of \mathcal{M}^k , for all k

Strategy

- 1 Candidates Symmetries are Symmetries of \mathcal{M}^k , for all k
- 2 Check candidates on the shape \mathcal{S}

Definition

Property 1 of \mathcal{M}^k

Isometry A is a symmetry of \mathcal{S}



Isometry A is a symmetry of \mathcal{M}^k , for all k

Strategy

- 1 Candidates Symmetries are Symmetries of \mathcal{M}^k , for all k
- 2 Check candidates on the shape \mathcal{S}

Determination of the Axis of Symmetry

Property 2

ω is a symmetry axis of \mathcal{M}^k

$\Downarrow \Updownarrow$

$$\|\nabla \mathcal{M}^k(\omega)\|^2 = 0$$

Potential Symmetry Axis ω of the Shape by solving:

$$\forall k \quad (\nabla \mathcal{M}^k)(\omega) = 0$$

Determination of the Axis of Symmetry

Efficient Computation

- Closed-form expression of \mathcal{M}^k for k even
- Using Spherical Harmonic (SH) Basis

$$\begin{aligned}\mathcal{M}^{2p}(\omega) &= \int_{\mathbf{s} \in \mathcal{S}} \|\mathbf{s} \times \omega\|^{2p} d\mathbf{s} \\ &= \sum_{l=0}^p \sum_{m=-2l}^{2l} C_l^m Y_{2l}^m(\omega)\end{aligned}$$

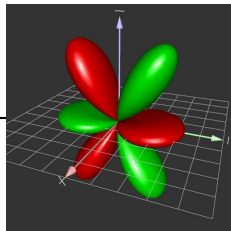
Determination of the Axis of Symmetry

Efficient Computation

- Closed-form expression of \mathcal{M}^k for k even
- Using Spherical Harmonic (SH) Basis

SH coefficient

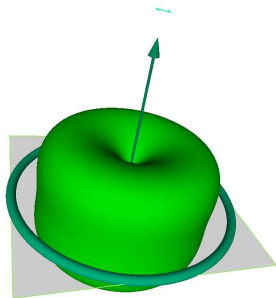
$$\begin{aligned}\mathcal{M}^{2p}(\omega) &= \int_{s \in \mathcal{S}} \|s \times \omega\|^{2p} ds \\ &= \sum_{l=0}^p \sum_{m=-2l}^{2l} C_l^m Y_{2l}^m(\omega)\end{aligned}$$



Determination of Symmetry Parameters

Property 3

Symmetries of \mathcal{M}^{2p} are obtained by *testing* SH coefficients.



Determination of Symmetry Parameters

Example: Testing Revolution-Symmetry

Question

Has \mathcal{M}^{2p} a revolution-symmetry around axis \mathbf{n} ?

We use the following powerful property:

Property

A Moment Function has a revolution-symmetry around z -axis if:

$$\forall l \quad \forall m \quad m \neq 0 \Rightarrow C_l^m = 0$$

Determination of Symmetry Parameters

Example: Testing Revolution-Symmetry

Question

Has \mathcal{M}^{2p} a revolution-symmetry around axis \mathbf{n} ?

We use the following powerful property:

Property

A Moment Function has a revolution-symmetry **around z-axis** if:

$$\forall l \quad \forall m \quad m \neq 0 \Rightarrow C_l^m = 0$$

Determination of Symmetry Parameters

Example: Testing Revolution-Symmetry

Lead to a simple 2-step method:

- 1 Rotate \mathcal{M}^{2p} to align axis \mathbf{n} on \mathbf{z}
- 2 Test the nullity of the “new” coefficients C_l^m
(up to a threshold)

Determination of Symmetry Parameters

- Equivalent properties exist for:
 - Planar symmetries,
 - fixed-angle rotational symmetries

Last step is to check candidates on the 3D shape \mathcal{S}

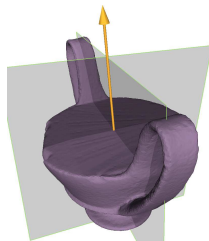
Determination of Symmetry Parameters

- Equivalent properties exist for:
 - Planar symmetries,
 - fixed-angle rotational symmetries

Last step is to check candidates on the 3D shape \mathcal{S}

Testing a symmetry on a 3D Shape

- Define a **Symmetry Measure**
- Symmetries defined up to a threshold
- Allow approximate symmetries.

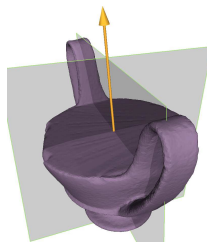


Fact

- *Testing a symmetry on \mathcal{S} is costly.*
- *Symmetry Measure only computed for few candidates*

Testing a symmetry on a 3D Shape

- Define a **Symmetry Measure**
- Symmetries defined up to a threshold
- Allow approximate symmetries.

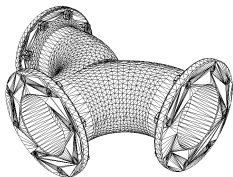


Fact

- *Testing a symmetry on \mathcal{S} is costly.*
- *Symmetry Measure only computed for few candidates*

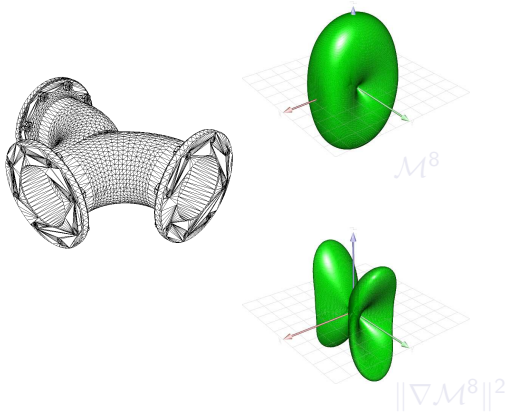
Results

Complete Example



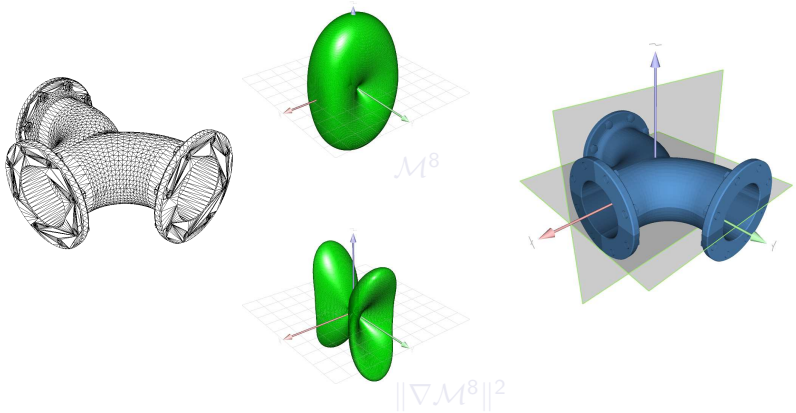
Results

Complete Example

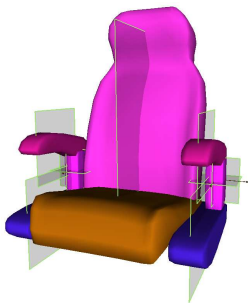


Results

Complete Example



Summary



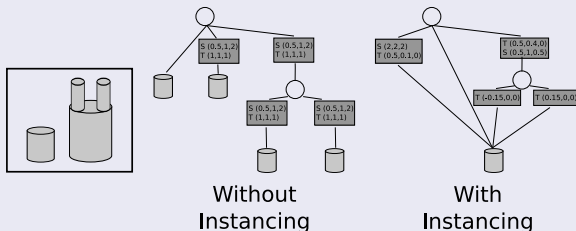
- Each tile (object) is structured using symmetry information
- Last step is to compute a representation of the geometry as a **Hierarchy of Instances**.

Hierarchical Instantiation

Definition

Instantiation

Factorize repeated geometry



Hierarchical Instantiation

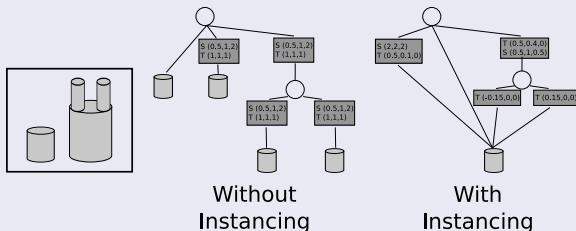
Extend Instantiation **at multiple scales**

Hierarchical Instantiation

Definition

Instantiation

Factorize repeated geometry



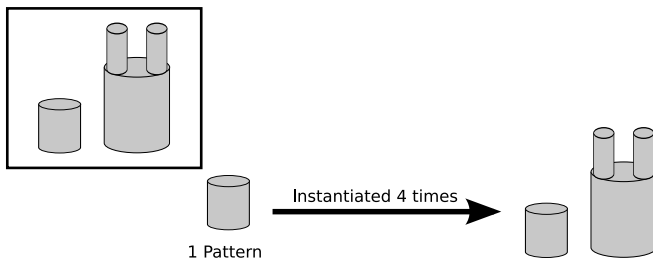
Hierarchical Instantiation

Extend Instantiation **at multiple scales**

Patterns and Instances

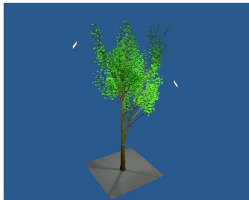
Definition

- A *pattern* is a generic set of objects,
- represented in the scene by *its instances*.
- Per instance attributes: Transformation matrix



Utility of Instancing Information

- Rendering
- Geometry Editing



H.Radiosity (**119mn/123MB**)



H.Instantiation (**14mn/8MB**)



Utility of Instancing Information

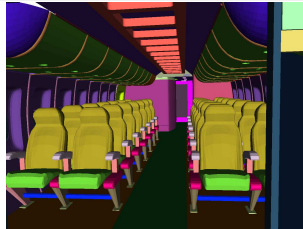
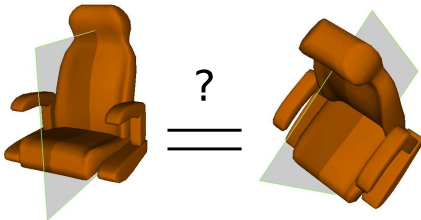
- Rendering
- Geometry Editing



Overview

Input data

- Set of Tiles
- Class of Congruency
 - Congruent Descriptor (see manuscript)
 - Derived from \mathcal{M}^{2P}

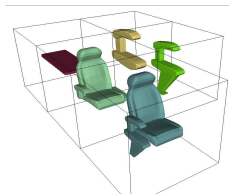


Overview

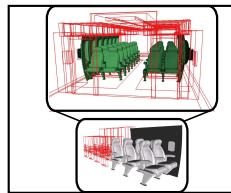
A two-step approach:



Structured 3D Geometry
Object Level



Frequent Patterns
Discovery



Organizing
Frequent Patterns

Problem Definition

Definition

The *frequency* of a pattern is equal to the number of its (possibly overlapping) instances



Objective

Given a threshold f , identify all patterns P which frequency is greater or equal to f .

Problem Definition

Definition

The *frequency* of a pattern is equal to the number of its (possibly overlapping) instances



Objective

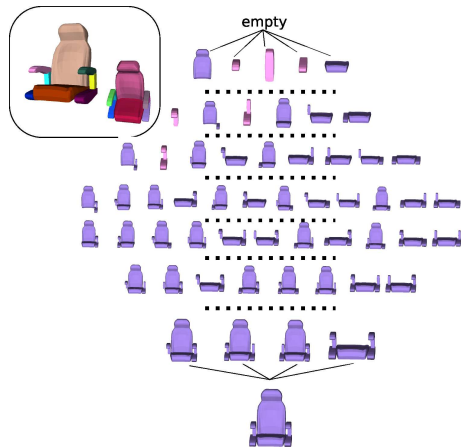
Given a threshold f , identify all patterns P which frequency is greater or equal to f .

Approach

Two potential approaches

- 1 Agglomerative Approach
 - Progressively grow up a pattern
 - Efficient traversal of the search space
 - **Exponential Complexity**

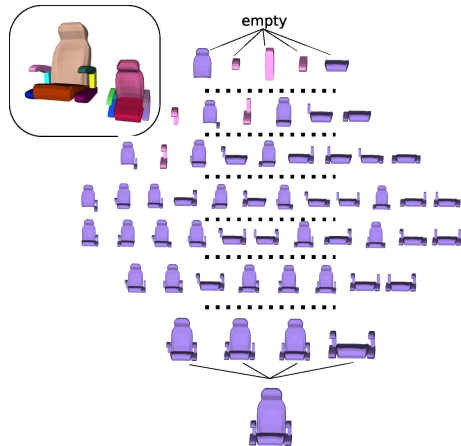
- 2 Symmetry-Based Approach



Approach

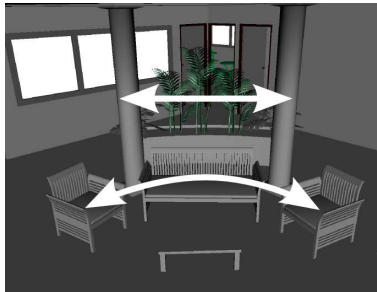
Two potential approaches

- 1 Agglomerative Approach
 - Progressively grow up a pattern
 - Efficient traversal of the search space
 - **Exponential Complexity**
- 2 Symmetry-Based Approach



Symmetry-Based Approach

Basic assumption



Fact

*Two instances of a pattern form a **local symmetry**.*

Symmetry-based approach

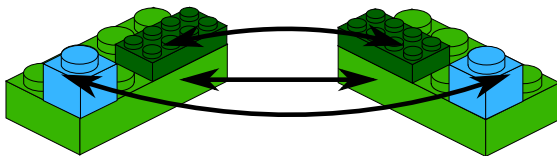
Strategy

Set of Frequent Patterns



Local Symmetries of the Scene

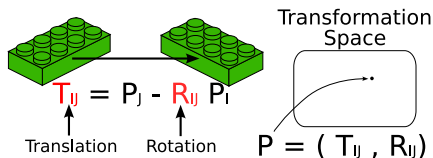
Symmetry-Based Approach



Overview

- Consider each couple of congruent tiles
- Compute the transformation that map one tile to the other
- Add the corresponding point in the **Transformation Space**

Symmetry-Based Approach



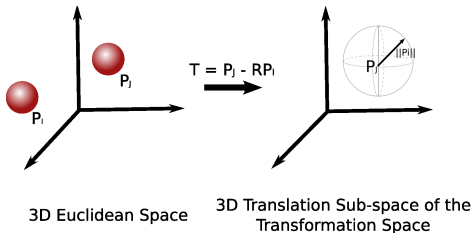
Overview

- Consider each couple of congruent tiles
- Compute the transformation that map one tile to the other
- Add the corresponding point in the **Transformation Space**

Symmetry-Based Approach

The Transformation Space

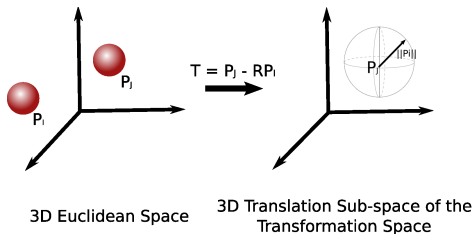
- For a couple of tiles, transformation is not unique:
 - Discrete symmetries *i.e.* rotation or planar symmetries.
 - continuous symmetries:



Symmetry-Based Approach

The Transformation Space

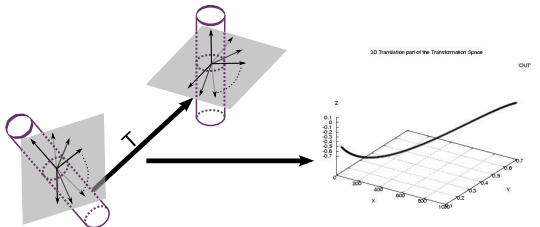
- For a couple of tiles, transformation is not unique:
 - Discrete symmetries *i.e.* rotation or planar symmetries.
 - continuous symmetries:
 - spherical symmetries,
 - cylindrical symmetries.



Symmetry-Based Approach

The Transformation Space

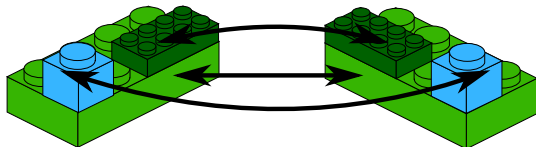
- For a couple of tiles, transformation is not unique:
 - Discrete symmetries *i.e.* rotation or planar symmetries.
 - continuous symmetries:
 - spherical symmetries,
 - cylindrical symmetries.



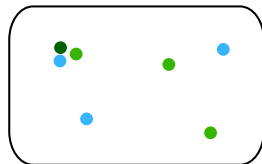
Symmetry-Based Approach

Forming patterns

- Each point of the Transformation Space contains an information of mapping between two tiles,
- Local symmetries are obtained by *clustering points*



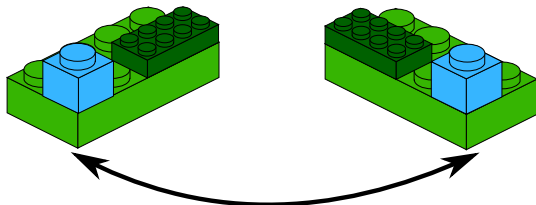
Transformation Space



Symmetry-Based Approach

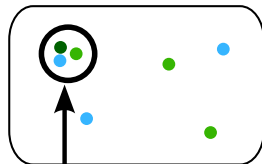
Forming patterns

- Each point of the Transformation Space contains an information of mapping between two tiles,
- Local symmetries are obtained by *clustering points*



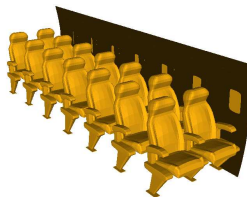
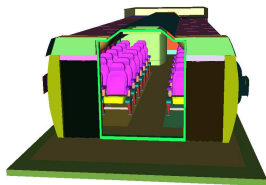
Two Instances of a Single Pattern

Transformation Space



Cluster of Points

Frequent Patterns: Results



tiles = 154
Freq = 2



tiles = 66
Freq = 4

# Tiles	480
Frequency Threshold	2
Runtime (secs)	1.4
# Frequent Patterns	65

Summary of Contributions

- 1 Identify the “hardness” of the problem
- 2 A new approach to generate frequent patterns
- 3 Not presented in this talk (see manuscript):
 - Analytic expression of curve equation for continuous symmetry
 - Method to reduce the number of mappings

Next step is to represent the scene as a **Hierarchy of Instances**

Summary of Contributions

- 1 Identify the “hardness” of the problem
- 2 A new approach to generate frequent patterns
- 3 Not presented in this talk (see manuscript):
 - Analytic expression of curve equation for continuous symmetry
 - Method to reduce the number of mappings

Next step is to represent the scene as a **Hierarchy of Instances**

Summary of Contributions

- 1 Identify the “hardness” of the problem
- 2 A new approach to generate frequent patterns
- 3 Not presented in this talk (see manuscript):
 - Analytic expression of curve equation for continuous symmetry
 - Method to reduce the number of mappings

Next step is to represent the scene as a **Hierarchy of Instances**

Summary of Contributions

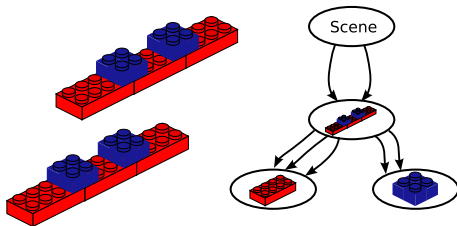
- 1 Identify the “hardness” of the problem
- 2 A new approach to generate frequent patterns
- 3 Not presented in this talk (see manuscript):
 - Analytic expression of curve equation for continuous symmetry
 - Method to reduce the number of mappings

Next step is to represent the scene as a **Hierarchy of Instances**

Problem Statement

Goal

- Obtain a hierarchy of instances
- Represented as a **Hierarchy Assembly Graph (HAG)**

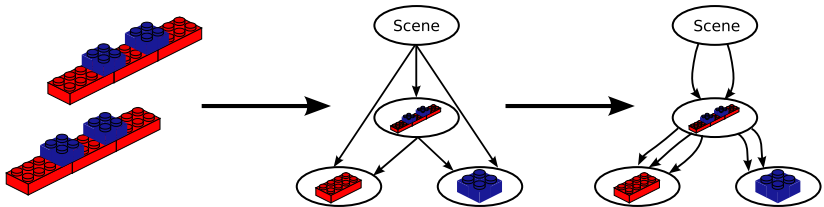


- Directed Acyclic Graph
- Each node is a pattern
- Each edge carries geometric transformation

HAG Construction

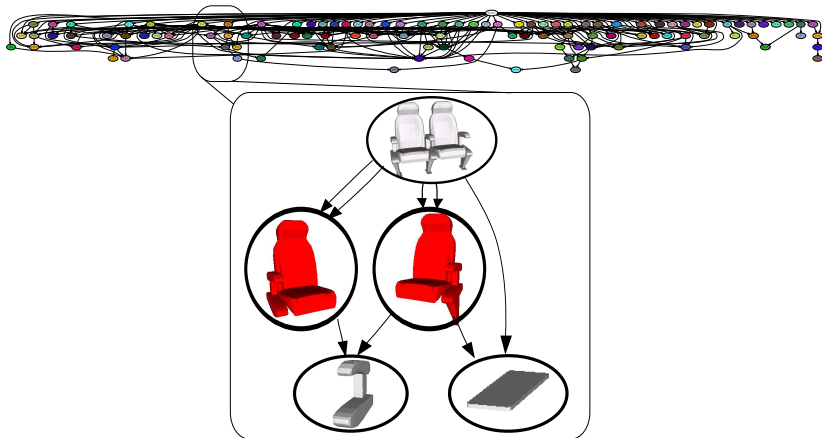
HAG Construction

- Represent inclusion between frequent patterns
- Pick a *reference instance* for each pattern
- Compute the appropriate transform by iterating through edges



HAG Construction

Example: The Plane Model



HAG Construction

Observation

A HAG with overlap nodes is hardly usable

Overlapping Problems

- 1 Multiple rendering of overlaped parts
- 2 Inefficient for memory reduction
- 3 Geometry editing is much more difficult

HAG Construction

Observation

A HAG with overlap nodes is hardly usable

Overlapping Problems

- 1 Multiple rendering of overlaped parts
- 2 Inefficient for memory reduction
- 3 Geometry editing is much more difficult

Deriving a usable Hierarchy of Instances

- Usable Hierarchy : Hierarchy with no-overlap
- Some choices must be made
- This process is **Application-Dependent**

Example

- Hierarchy of Instances optimized for Ray-Tracing

Deriving a usable Hierarchy of Instances

- Usable Hierarchy : Hierarchy with no-overlap
- Some choices must be made
- This process is **Application-Dependent**

Example

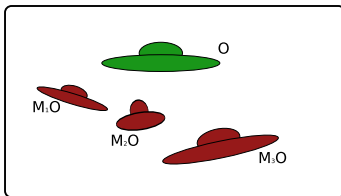
- Hierarchy of Instances optimized for Ray-Tracing

Deriving a usable Hierarchy of Instances

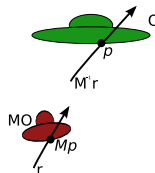
Ray-Tracing

Generalities

- Ray-Tracing naturally allows instancing
- Load a single pattern per instance
- Reduce part of the geometry loaded in memory



Simple Scene with instances



Ray-object intersection

Deriving a usable Hierarchy of Instances

Ray-Tracing

If considering **whole scene** itself as a **Pattern of frequency 1**:

Strategy

Hierarchy of Instances optimized for Ray-Tracing



Reduce storage cost $C(P)$ of each pattern P

Deriving a usable Hierarchy of Instances

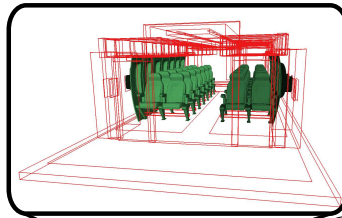
Ray-Tracing

Strategy

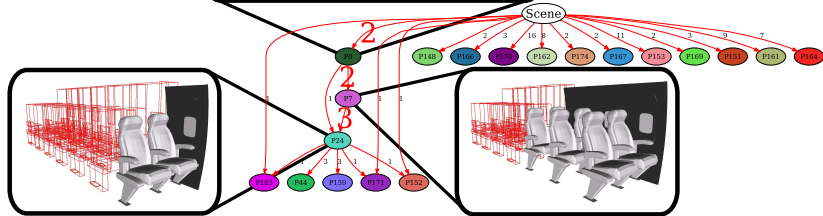
- Bottom-Up Approach
- For each pattern P :
 - $\min C(P)$ **constrained by non-overlap**
- Such problem is **NP -complete**
- Need an approximation algorithm: greedy approach

Deriving a usable Hierarchy of Instances

Example: Plane Model

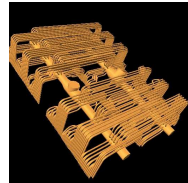
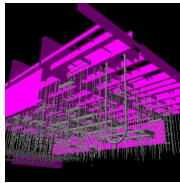


# Tiles	480
Runtime (secs)	1.4
Compression Rate	1:3.5



Deriving a usable Hierarchy of Instances

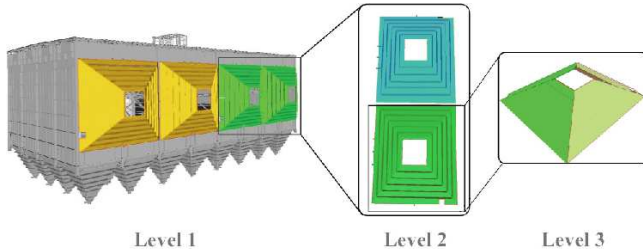
Example: Powerplant Model



# Polygons	Pre-processing Geometry	# Tiles	Structuring Object Level (Parallel process)	Frequent Patterns	
				Runtime	# Patterns
12,748,510	2 minutes	155,348	Approx. 16 hours	1h45	87,100

Deriving a usable Hierarchy of Instances

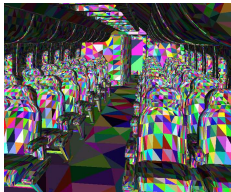
Example: Powerplant Model



Runtime	Compression Rate
51 seconds	1:5.2

Summary

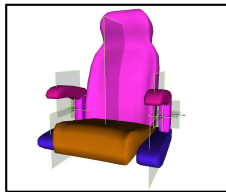
- A whole pipeline for structuring 3D Geometry:



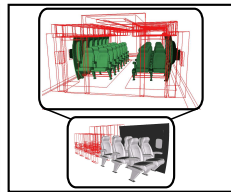
Unstructured
3D Geometry



Pre-Processing
3D Geometry



Object Level:
Symmetry



Scene Level:
Instancing

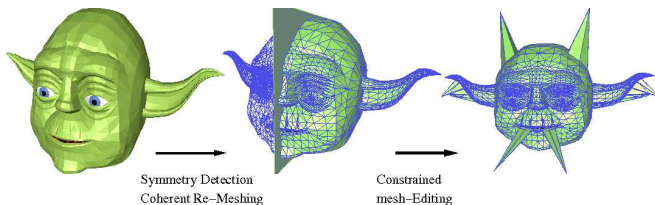
- Potential Applications:
 - Rendering
 - Geometry Editing

Summary of Contributions

Two contributions for Structuring 3D Geometry:

Detection of Symmetries in 3D Shapes

- The Generalized Moment Functions
- Algorithms for Single and Composite Shapes
- Potential Applications: Compression, Geometry Editing, ...

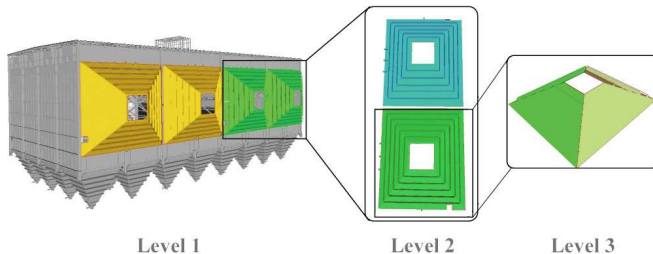


Summary of Contributions

Two contributions for Structuring 3D Geometry:

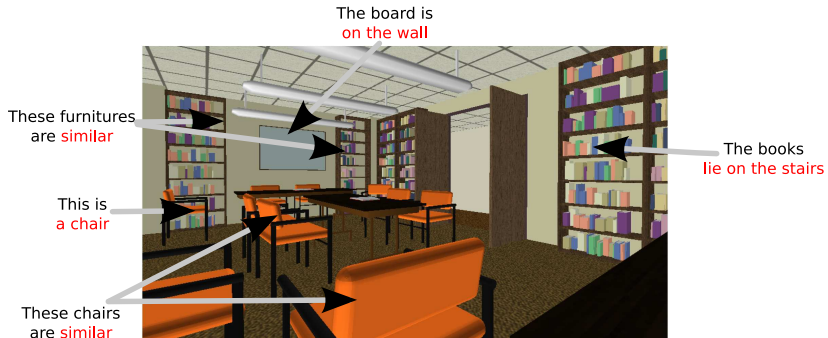
Hierarchical Instancing of Geometry

- A way of representing geometry as a Hierarchy of Instances
- Potential Applications: Geometry Editing, Compression, rendering, ...



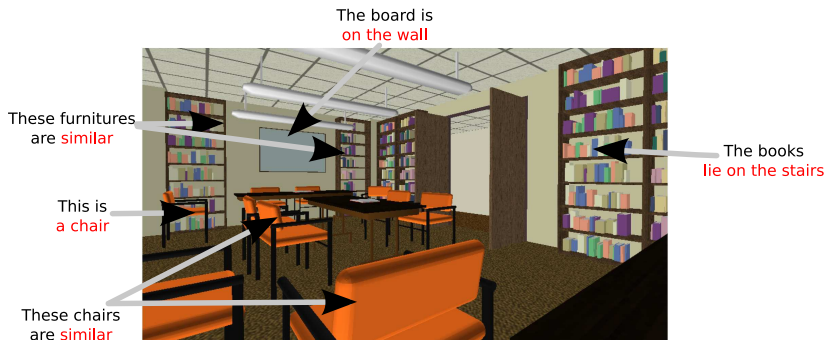
Future Work

- Most Promising Work: **Structuring at the Semantic Level**
- Adaptive Display Algorithm [Funkhouser et al. 93]
 - Adapt geometry to render it at interactive frame rates



Future Work

- Most Promising Work: **Structuring at the Semantic Level**
- Adaptive Display Algorithm [Funkhouser et al. 93]
 - Adapt geometry to render it at interactive frame rates



Thank you for your attention

