

Soutenance de  
thèse

M. Rovezzi

Introduction

Spintronics

XAFS

Fe in GaN

Incorporations

Series

Co-doping

Mn in Ge

Models

NCs results

Mn in GaAs

Models

Surface study

Etch-anneal

Conclusions

# Étude de l'ordre locale autour d'impuretés magnétiques dans les semiconducteurs pour l'électronique de spin

Thèse pour obtenir le grade de  
Docteur en Sciences de l'Université Joseph Fourier - Grenoble I  
Spécialité Physique de la Matière Condensée et du Rayonnement

Mauro Rovezzi

Directeur de thèse : Francesco d'Acapito

6 Octobre 2009

Soutenance de  
thèse

M. Rovezzi

Introduction

Spintronics  
XAFS

Fe in GaN

Incorporations  
Series  
Co-doping

Mn in Ge

Models  
NCs results

Mn in GaAs

Models  
Surface study  
Etch-anneal

Conclusions

# Study of the local order around magnetic impurities in semiconductors for spintronics

Mauro Rovezzi<sup>1</sup>

<sup>1</sup> Consiglio Nazionale delle Ricerche - GILDA Collaborating Research Group  
BM08 c/o ESRF - Grenoble, France

October 6<sup>th</sup>, 2009

Soutenance de  
thèse

M. Rovezzi

Introduction

Spintronics  
XAFS

Fe in GaN

Incorporations  
Series  
Co-doping

Mn in Ge

Models  
NCs results

Mn in GaAs

Models  
Surface study  
Etch-anneal

Conclusions

## The whole work:

- I. Fe in GaN
- II. Mn in Ge
- III. Mn in GaAs
- IV. Mn in GaAs/InAs  
NanoWires

## Additional work:

- A. GIXAS exp. set-up
- B. CARD software
- C. Mn in ZnSe and CdSe

## This talk:

- 1 Introduction
  - Semiconductor spintronics
  - XAFS
- 2 Fe in GaN
  - Incorporations
  - Series
  - Co-doping
- 3 Mn in Ge
  - Models
  - NCs results
- 4 Mn in GaAs
  - Models
  - Surface study
  - Etch-anneal process
- 5 General conclusions and outlook



Soutenance de  
thèse

M. Rovezzi

Introduction

Spintronics  
XAFS

Fe in GaN

Incorporations  
Series  
Co-doping

Mn in Ge

Models  
NCs results

Mn in GaAs

Models  
Surface study  
Etch-anneal

Conclusions

The whole work:

- I. Fe in GaN
- II. Mn in Ge
- III. Mn in GaAs
- IV. Mn in GaAs/InAs  
NanoWires

Additional work:

- A. GIXAS exp. set-up
- B. CARD software
- C. Mn in ZnSe and CdSe

This talk:

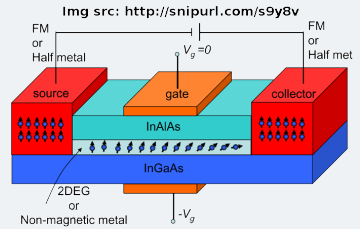
- 1 Introduction
  - Semiconductor spintronics
  - XAFS
- 2 Fe in GaN
  - Incorporations
  - Series
  - Co-doping
- 3 Mn in Ge
  - Models
  - NCs results
- 4 Mn in GaAs
  - Models
  - Surface study
  - Etch-anneal process
- 5 General conclusions and outlook



## Spin-polarized field-effect transistor

[Datta & Das, Appl. Phys. Lett. (1990)]

- 1 Efficient spin injection
- 2 Long spin diffusion (nm– $\mu$ m) and efficient spin manipulation
- 3 Reliable spin detection



## Magnetic semiconductors (MS)

- Electric spin injection better than optical for real devices
- Injection by ferromagnetic metals is inefficient (conductivity mismatch)  $\Rightarrow$  tunnel junctions or ferromagnetic semiconductors
- Advantage in MS: control electric properties using a magnetic field and *vice versa* their magnetic properties using an electric field
- Need high Curie temperature ( $T_C$ ), beyond room temperature

Semiconductor ( $A_{1-x}B_x$ ) where a fraction  $x$  of the cations (few %) is randomly substituted by magnetic elements as transition metals (TMs)

### Origin of ferromagnetism $\Rightarrow$ exchange interactions

- TMs introduce **localized energy levels** (in the band gap for III-V)
- **Magnetic order**: interplay between spin degree of freedom, Coulomb interactions and Fermi statistics; not crucial for magnetic order: dipole-dipole and spin-orbit (relativistic effect)
- **$s(p)$ - $d$ , and  $d$ - $d$  exchange**: former direct between band states and TM, latter indirect (mediated by valence/conduction band states)

### "low"- $T_C$ FM DMS: electronic nanoscale phase separation

- Zener mean field model [Dietl *et al.*, Science (2000)]  

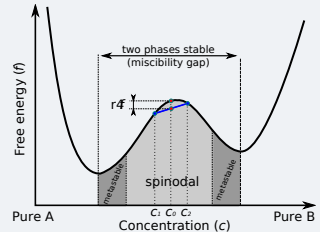
$$\mathcal{H} = \mathcal{H}_0 + \sum_{i \in I} J_{pd} \mathbf{S}_i \cdot \mathbf{s}_i \rightarrow T_C \propto J_{pd}^2 x_{eff} p^{1/3}$$

increasing  $p$  and  $x_{eff}$ !
- Disorder  $\Rightarrow$  need to consider defects of compensation (E.g. in III-V):
  - **Anti-sites** affect the density of carriers
  - **Interstitials** affect also the density of magnetically active TMs

## Spinodal decomposition

[Cahn and Hilliard works ('60s)]

- $\partial^2 f / \partial c^2 < 0 \Rightarrow$  **decompose spontaneously**; phase transition small in degree (composition change) but large in extent (size)
- $\partial^2 f / \partial c^2 > 0 \Rightarrow$  **nucleation and growth**; phase transition large in degree but small in extent



- TM-rich and TM-poor regions with the structure of the host crystal
- TM-rich region is high  $T_C$  and accounts for magnetization at RT
- Controlled by Fermi level during growth (Coulomb repulsion)

## Magnetism: *ab initio* approach

[Katayama-Yoshida *et al.* (2007)]

- No semi-phenomenological  $\mathcal{H}$
- DFT + Monte Carlo
- GaMnN: a,c) high- $T_C$ ; b) low- $T_C$



## Advantages

- Element-selective (x-ray absorption edges of the elements)
- Local probe ( $< 10 \text{ \AA}$  from the absorbing atoms)
- No need long-range order (complementary to XRD)
- Sensitive to impurities (detection limit:  $\approx 10^{14} \text{ at/cm}^2$ )
- Accurate bond distances (resolution:  $\approx 1\%$ )
- Charge state (from near-edge region)

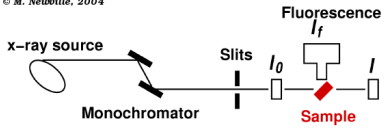
## Disadvantages

- Average signal (difficult to resolve mixed phases if present in small quantities, limit:  $\approx 20\%$ )
- No spatial resolution in the sample (bulk probe)



- Soutenance de thèse
- M. Rovezzi
- Introduction
- Spintronics
- XAFS
- Fe in GaN
- Incorporations
- Series
- Co-doping
- Mn in Ge
- Models
- NCs results
- Mn in GaAs
- Models
- Surface study
- Etch-anneal
- Conclusions

© M. Newville, 2004



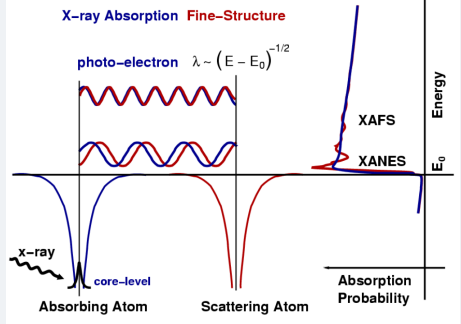
Absorption coefficient  $\mu(E)$

$$\mu(E)t = -\ln(I/I_0), \text{ transmission}$$

$$\mu(E) \propto I_f/I_0, \text{ fluorescence}$$

- 1 Absorption through photo-electric effect
- 2 Photo-electron scattering and interference with itself
- 3 Core-hole filled and fluorescent x-ray emitted

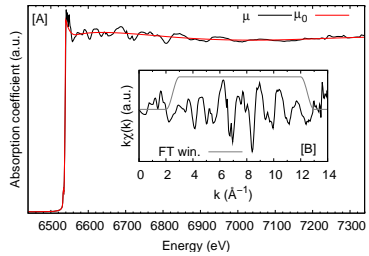
© M. Newville, 2004



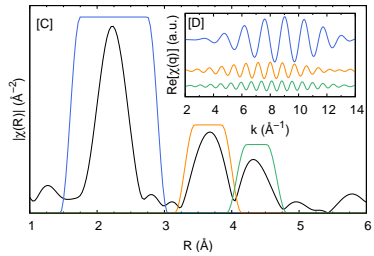
# X-ray Absorption Fine-Structure

Overview of the quantitative analysis

- Soutenance de thèse
- M. Rovezzi
- Introduction
- Spintronics
- XAFS
- Fe in GaN
- Incorporations
- Series
- Co-doping
- Mn in Ge
- Models
- NCs results
- Mn in GaAs
- Models
- Surface study
- Etch-anneal
- Conclusions

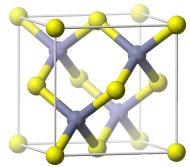


FT  
→



$$\chi(k) = \sum_j \frac{N_j S_0^2 f_j(k) e^{-2R_j/\lambda(k)} e^{-2k^2\sigma_j^2}}{kR_j^2} \sin[2kR_j + \delta_j(k)]$$

From “scattering paths” → distances,  
coordination numbers and mean-square  
disorder around absorber



Soutenance de  
thèse

M. Rovezzi

Introduction

Spintronics

XAFS

Fe in GaN

Incorporations

Series

Co-doping

Mn in Ge

Models

NCs results

Mn in GaAs

Models

Surface study

Etch-anneal

Conclusions

## General purpose Italian beamLine for Diffraction and Absorption

- Source: bending magnet
- Monochromator: double crystal with sagittal focusing (horizontal)
- Mirrors (for harmonics rejection): Pd/Pt with bending (vertical focusing)
- Energy range: 4 – 80 KeV
- Energy resolution ( $\Delta E/E$ ):  $10^{-4}$
- Flux on the sample:  $10^8 - 10^{11}$  ph/s
- Minimum beam-size (vertical):  $30 \mu m$
- Detector for reflectivity and monitoring: ion chambers
- Detector for fluorescence: 13 elements high purity Ge
- Detection modes: transmission, normal fluorescence, total electron yield, grazing-incidence (RefLEXAFS)



Soutenance de  
thèse

M. Rovezzi

Introduction

Spintronics  
XAFS

Fe in GaN

Incorporations  
Series  
Co-doping

Mn in Ge

Models  
NCs results

Mn in GaAs

Models  
Surface study  
Etch-anneal

Conclusions

In collaboration with



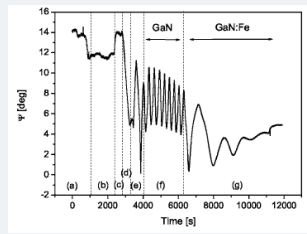
Part of the present work published in

- A. Bonanni *et al.*, Phys. Rev. Lett. **101**, 135502 (2008)
- M. Rovezzi *et al.*, Phys. Rev. B **79**, 195209 (2009)

- Metalorganic vapour phase epitaxy (MOVPE)
- c-plane  $Al_2O_3$  (sapphire) substrates
- Precursors: TMGa (trimethylgallium),  $NH_3$  (ammonia),  $Cp_2Fe$  (ferrocene),  $Cp_2Mg$  (bis-cyclopentadienyl-magnesium),  $SiH_4$  (silane)
- In-situ monitoring: ellipsometry, XRD, laser reflectivity

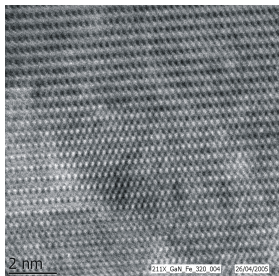
## Growth procedure

- 1 Substrate nitridation
- 2 LT (540 °C) GaN nucl. layer
- 3 Annealing/recrystallization
- 4 1  $\mu m$  HT (1050 °C) GaN
- 5 0.5 – 1  $\mu m$  GaN:Fe(:Mg,Si)
  - 800 – 950 °C
  - 50 – 400 sccm<sup>a</sup>  $Cp_2Fe$



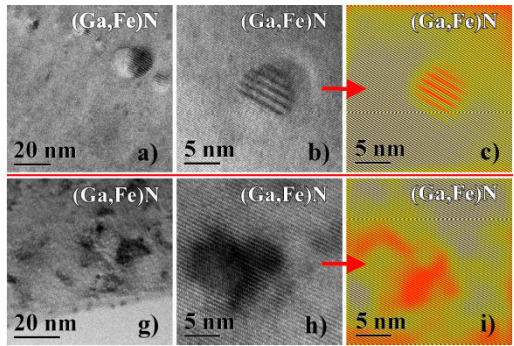
<sup>a</sup>standard cubic centimeters per minute

## Random substitutional



- Low temp. Curie paramagnetism from  $\text{Fe}^{3+}$  ( $d^5$ )

## Chemical and crystallographic separation



- Enhanced ferromagnetic response
- Persisting at high temperature

Solubility limit<sup>1</sup> at 200 sccm  $\text{Cp}_2\text{Fe}$  ( $\approx 0.4\%$  Fe)

<sup>1</sup> in our growth conditions

Soutenance de  
thèse

M. Rovezzi

Introduction

Spintronics  
XAFS

Fe in GaN

Incorporations  
Series  
Co-doping

Mn in Ge

Models  
NCs results

Mn in GaAs

Models  
Surface study  
Etch-anneal

Conclusions

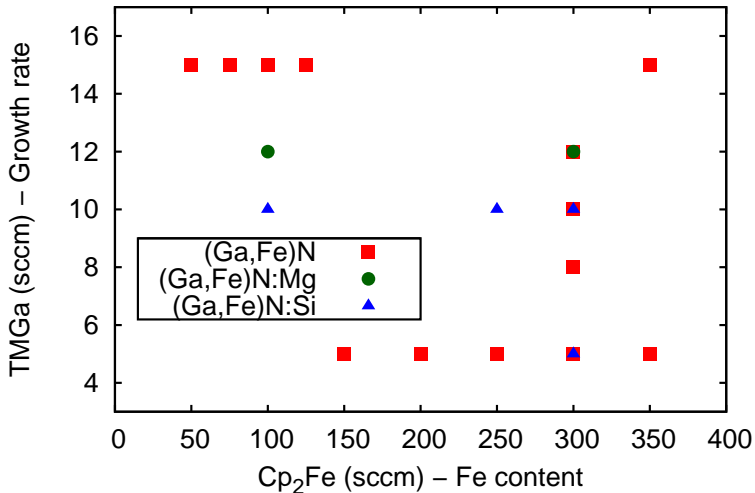
## Samples characterized at Fe K-edge (7112 eV)

### GILDA at ESRF

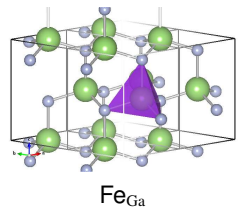
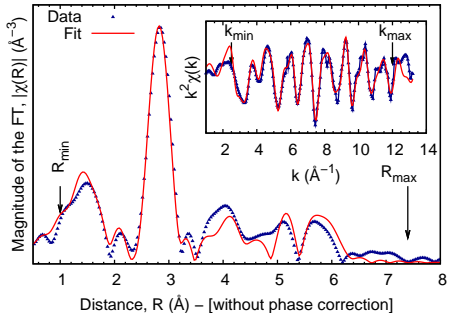
- Bending magnet source
- Linear polarization: out-of-plane ( $90^\circ$ )
- Standard geometry
- High-purity 13-elements Ge detector

### LUCIA at SLS (now at SOLEIL)

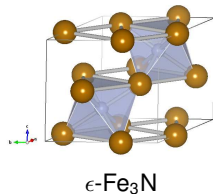
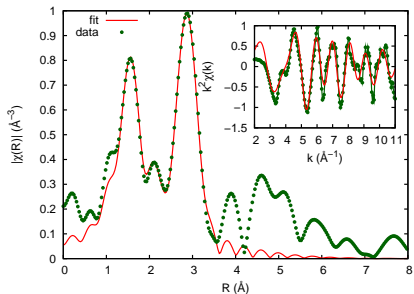
- Insertion device source
- Linear polarization: in-plane ( $0^\circ$ ) and out-of-plane ( $90^\circ$ )
- Grazing incidence geometry
- Silicon drift fluorescence detector





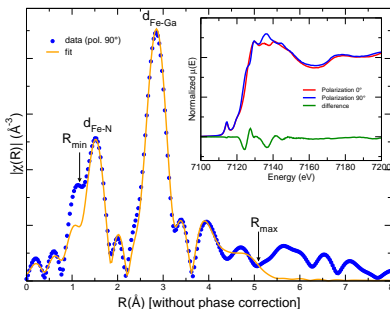


- Possible to fit up VI coordination shell with a minimum set of variables (Debye correlated model for  $\sigma^2$ )  $\Rightarrow$  low local structural disorder
- Global 1% expansion to respect GaN [ $d_{\text{Fe-N}} = 1.98(1)$  Å and  $d_{\text{Fe-Ga}} = 3.19(2)$  Å]
- Experimental results in line with the Fe<sub>Ga</sub><sup>3+</sup> DFT relaxed structure (LSDA+U, 72-atoms supercell):  $d_{\text{Fe-N}} = 1.99(1)$  Å and  $d_{\text{Fe-Ga}} = 3.22(1)$  Å

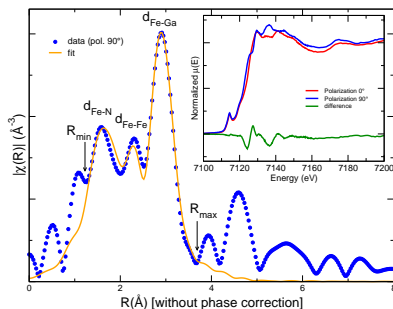


- $\approx 60(10)\%$  Fe<sub>Ga</sub>:  $d_{\text{Fe-N}} = 2.02(1) \text{ \AA}$   $d_{\text{Fe-Ga}} = 3.22(4) \text{ \AA}$
- $\approx 40(10)\%$   $\epsilon$ -Fe<sub>3</sub>N (Bainite):  $d_{\text{Fe-Fe}} = 2.71(2) \text{ \AA}$

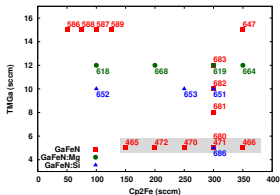
## Fe<sub>Ga</sub>



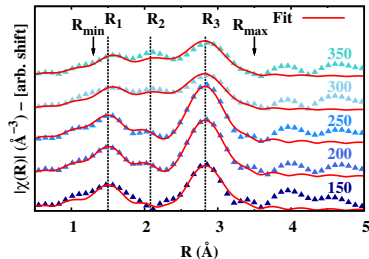
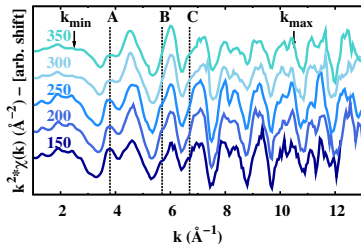
## Fe<sub>Ga</sub> + precipitates ( $\alpha$ -Fe)



- Double polarization (changed at the source): in-plane ( $0^\circ$ ) and out-of-plane ( $90^\circ$ )
- Linear dichroism  $\Rightarrow$  incorporation in non-cubic site
- Cubic precipitates do not contribute to the dichroic signal  $\Rightarrow$  additional information by EXAFS



- TMGa @ 5 sccm  $\Rightarrow$  solubility limit at  $\approx 0.4\%$  Fe (in our growth conds.)
- Fe < 200 sccm  $\Rightarrow$  Fe substitutional in wurtzite GaN ( $\text{Fe}_{\text{Ga}}$ )
- Fe  $\geq$  200 sccm  $\Rightarrow$   $\text{Fe}_{\text{Ga}} + \epsilon\text{-Fe}_3\text{N}$  precipitates



Soutenance de thèse

M. Rovezzi

Introduction

Spintronics  
XAFS

Fe in GaN

Incorporations

Series

Co-doping

Mn in Ge

Models

NCs results

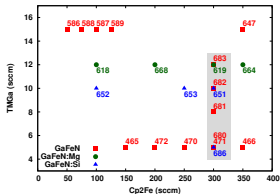
Mn in GaAs

Models

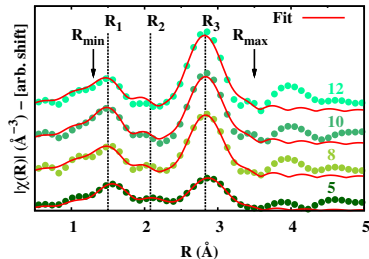
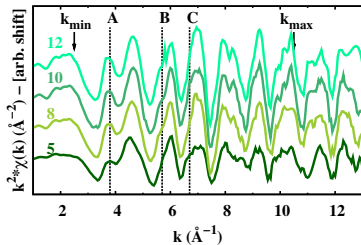
Surface study

Etch-anneal

Conclusions



- $\text{Fe}_{\text{Ga}}$  for TMGa  $\geq 8$  sccm
- 100(10) %  $\text{Fe}_{\text{Ga}}$  still for 350 sccm  $\text{Cp}_2\text{Fe}$  and TMGa 15 sccm (max!)
- Solubility limit improved from  $\approx 0.4\%$  to  $\approx 1\%$  Fe



Soutenance de thèse

M. Rovezzi

Introduction

Spintronics

XAFS

Fe in GaN

Incorporations

Series

Co-doping

Mn in Ge

Models

NCs results

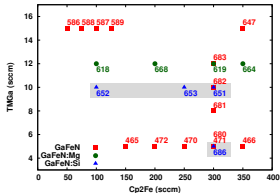
Mn in GaAs

Models

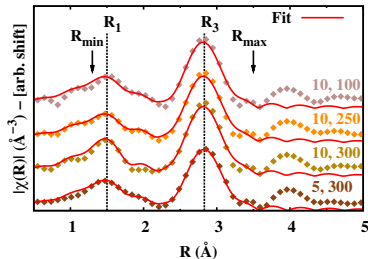
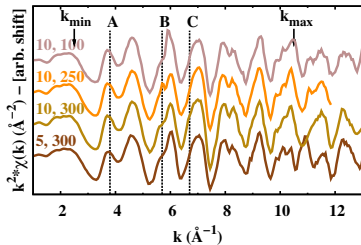
Surface study

Etch-anneal

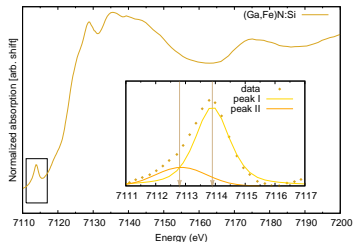
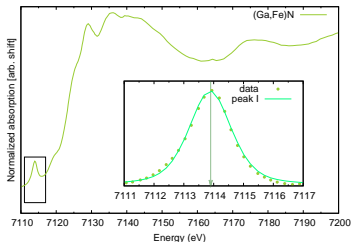
Conclusions



- 100(10)% Fe<sub>Ga</sub>
- No additional phases are detectable
- Effect due to Fermi level shift



## Comparing spectra with the same $\text{Fe}_{\text{Ga}}$ incorporation



● I @ 7113.9(1) eV  $\Rightarrow \text{Fe}^{3+}$

● I @ 7113.9(1) eV  $\Rightarrow \text{Fe}^{3+}$

● II @ 7112.8(1) eV  $\Rightarrow \text{Fe}^{2+}$

By affecting the Fe charge state, the Coulomb repulsion overcompensate the lowering of the free energy due to the nearest-neighbour bonding

[Dietl, Nature Mat. (2006)]

Soutenance de thèse

M. Rovezzi

Introduction

Spintronics  
XAFS

Fe in GaN

Incorporations  
Series  
Co-doping

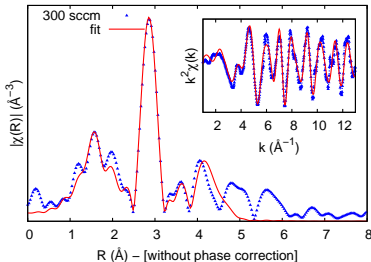
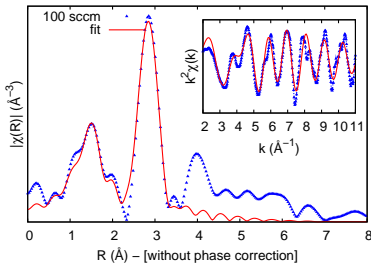
Mn in Ge

Models  
NCs results

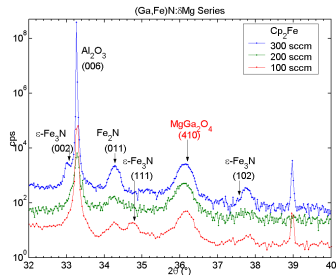
Mn in GaAs

Models  
Surface study  
Etch-anneal

Conclusions



- No charge state change ( $\text{Fe}^{3+}$ )
- Additional  $d_{\text{Fe-Fe}} = 2.57(1) \text{ \AA}$  increasing in amplitude
- Closer to  $\gamma$ -Fe (fcc) or  $\zeta$ - $\text{Fe}_2\text{N}$  (orthorhombic) than  $\alpha$ -Fe (bcc)
- Precipitates visible by SXRD





Soutenance de  
thèse

M. Rovezzi

Introduction

Spintronics

XAFS

Fe in GaN

Incorporations

Series

Co-doping

Mn in Ge

Models

NCs results

Mn in GaAs

Models

Surface study

Etch-anneal

Conclusions

In collaboration with



Part of the present work published in

- M. Rovezzi *et al.*, Appl. Phys. Lett. **92**, 242510 (2008)

## Sample growth

- LT-MBE, co-dep. of Ge and Mn
- Ge(001) substrate + Ge buffer
- Growth temp.: 80 °C – 200 °C
- Mn concentration: 0.1% – 20 %  
(Mn solubility in Ge is very low,  
 $\approx 10^{-5}$  %)



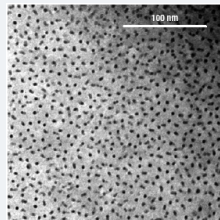
80 nm (Ge,Mn)

40 nm Ge buffer

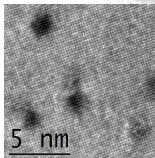
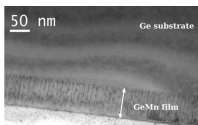
Ge(001) substrate

## 2D spinodal decomposition

- High- $T_C$  self-organized nanocolumns  
(> 400 K)
- Diameter 3 nm, volume fraction 16%

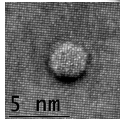
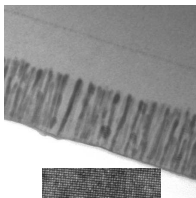


80–120 °C



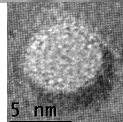
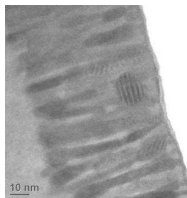
- Fully strained low- $T_C$  NCs
- Narrow size distribution
- Superpara-magnetism

120–145 °C



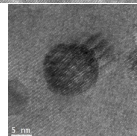
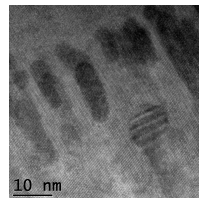
- Columns diameter increase
- Ferro-magnetism
- High- $T_C$  NCs around 130 °C

145–180 °C



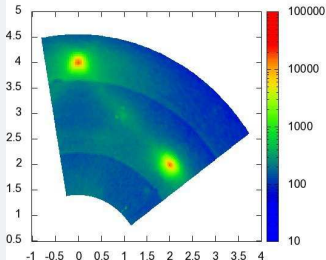
- Large and amorphous columns
- Major contribution from  $\text{Ge}_3\text{Mn}_5$

180–200 °C



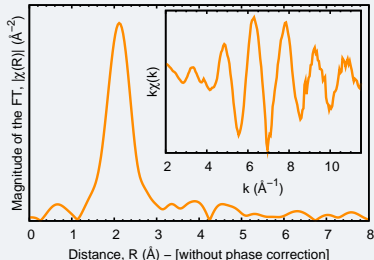
- $\text{Ge}_3\text{Mn}_5$  clusters

## Long range $\Rightarrow$ crystalline



GIXRD map of  $\{hk0\}$

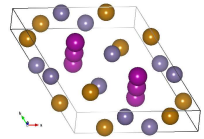
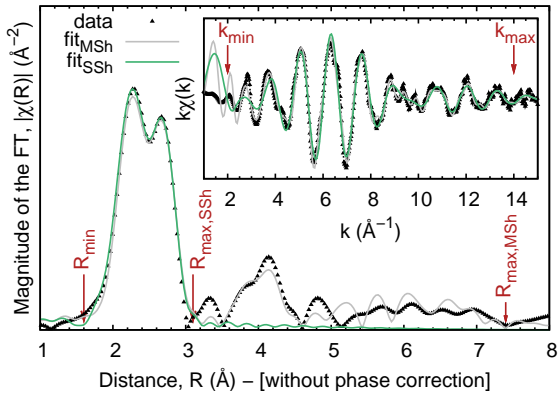
## Short range $\Rightarrow$ disordered



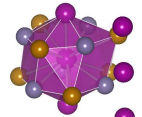
XAFS data @ Mn K-edge

## Data analysis

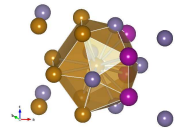
- Comparison with **reference samples**:  $\text{Ge}_3\text{Mn}_5$  and  $\text{GeMn}(0.1\%)$
- Fits using **multiple data sets** (to compensate the reduced information content in EXAFS)
- Assisted by *ab initio* **DFT calculations** (in the limit of LSDA approx.)



Unit cell



Mn<sub>1</sub> (40% of the sites)



Mn<sub>2</sub> (60% of the sites)

	Mn <sub>1</sub>		Mn <sub>2</sub>		Average	
	coord.	dist. (Å)	coord.	dist. (Å)	coord.	dist. (Å)
d <sub>2</sub>	2 Mn <sub>1</sub> 6 Ge	2.526 2.538	2 Ge	2.488	4.4 Ge&Mn	2.507
d <sub>3</sub>			1 Ge 2 Ge	2.610 2.768	1.8 Ge	2.715
d <sub>4</sub>	6 Mn <sub>2</sub>	3.065	2 Mn <sub>2</sub> 4 Mn <sub>2</sub> 4 Mn <sub>1</sub>	2.983 3.058 3.065	8.4 Mn	3.053

Crystallographic ( $\text{Ge}_3\text{Mn}_5$ ) distances

# Model sample: Mn "diluted" in Ge

Minimum Mn concentration reachable ( $\approx 0.1\%$ ) grown at  $125^\circ\text{C}$

Soutenance de thèse

M. Rovezzi

Introduction

Spintronics  
XAFS

Fe in GaN

Incorporations  
Series  
Co-doping

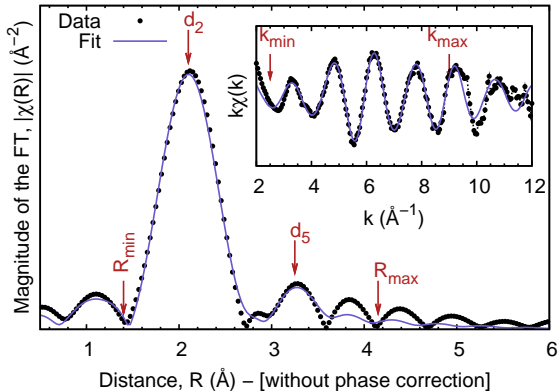
Mn in Ge

Models  
NCs results

Mn in GaAs

Models  
Surface study  
Etch-anneal

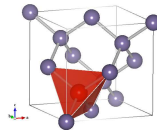
Conclusions



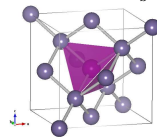
Site	Distance ( $\text{\AA}$ ) / Coordination							
	$d_1$	$d_2$	$d_3$	$d_5$	$d_6$			
Mn <sub>S</sub>	–	–	2.45 4	–	–	–	–	4.00 12
Mn <sub>T</sub>	–	–	2.45 4	2.83 6	–	–	–	–
Mn <sub>H</sub>	2.35 6	–	–	–	–	3.67 8	–	–

Crystallographic (Ge diamond) distances

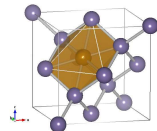
## Elementary defects in Ge



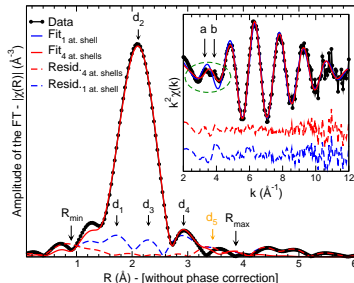
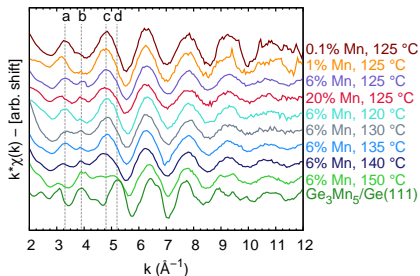
Substitutional, Mn<sub>S</sub>



Tetrahedral interstitial, Mn<sub>T</sub>



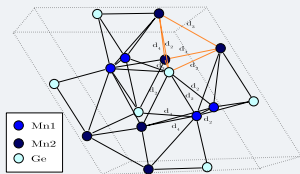
Hexagonal interstitial, Mn<sub>H</sub>



Sample	Distance (Å) / Coordination						
	$d_2$		$d_3$	$d_4$		$d_5$	
$T_G = 125 \text{ }^\circ\text{C}$ :							
GeMn(0.1%)	2.47(1)	4.2(5) <sup>a</sup>	–	–	–	3.57(2)	1.2(4) <sup>a</sup>
GeMn(1%)	2.48(1)	4.0(5) <sup>a</sup>	–	–	–	3.60(4)	0.8(5) <sup>a</sup>
GeMn(6%)	2.49(1)	4.0(5) <sup>a</sup>	2.82(4)	0.8(4) <sup>c</sup>	3.09(4)	0.8(4) <sup>c</sup>	–
GeMn(20%)	2.49(1)	4.0(5) <sup>a</sup>	2.82(2)	1.6(2) <sup>b</sup>	3.10(2)	1.4(3) <sup>b</sup>	–
<b>Mn 6%:</b>							
GeMn(120 °C)	2.48(1)	4.2(5) <sup>a</sup>	–	–	–	3.57(4)	0.7(3) <sup>a</sup>
GeMn(130 °C)	2.49(1)	4.0(5) <sup>a</sup>	2.86(5)	1.2(4) <sup>c</sup>	3.10(5)	1.3(4) <sup>c</sup>	–
GeMn(135 °C)	2.49(1)	4.0(5) <sup>a</sup>	2.80(2)	1.0(2) <sup>c</sup>	3.07(2)	1.2(2) <sup>b</sup>	–
GeMn(140 °C)	2.49(1)	4.0(5) <sup>a</sup>	2.80(2)	1.4(2) <sup>c</sup>	3.06(2)	1.1(3) <sup>b</sup>	–
GeMn(150 °C)	2.49(1)	4.0(5) <sup>a</sup>	2.81(2)	3.7(7) <sup>b</sup>	3.01(2)	2.2(4) <sup>b</sup>	–
<b>Reference sample on Ge(111):</b>							
Ge <sub>3</sub> Mn <sub>5</sub>	2.52(1)	5.0(5) <sup>d</sup>	2.70(5)	1.2(4) <sup>a</sup>	3.04(5)	8.4(5) <sup>b</sup>	–

Backscatterer: <sup>a</sup> Ge; <sup>b</sup> Mn; <sup>c</sup> Ge or Mn; <sup>d</sup> Ge and Mn.

## Building block

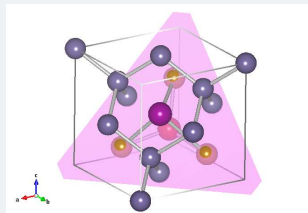


- Only the **Ge-3Mn<sub>2</sub> tetrahedron** fits with experimental results
- NCs are precursors of Ge<sub>3</sub>Mn<sub>5</sub> ⇒ increase of *d*<sub>4</sub> coordination number with temp. and conc.

## Linking block

[Ahlers, PhD Thesis (2009)]

- Pure ball-and-stick model (not relaxed!) ⇒ links Ge<sub>3</sub>Mn<sub>5</sub> to Ge(111) with native defects
- 3 Mn<sub>2</sub> as Mn<sub>H</sub> on Ge(111) + 2 Mn<sub>1</sub> ⊥ as Mn<sub>T</sub> and Mn<sub>S</sub>
- Compatible with present results





Soutenance de  
thèse

M. Rovezzi

Introduction

Spintronics  
XAFS

Fe in GaN

Incorporations  
Series  
Co-doping

Mn in Ge

Models  
NCs results

Mn in GaAs

Models  
Surface study  
Etch-anneal

Conclusions

In collaboration with



Soutenance de  
thèse

M. Rovezzi

Introduction

Spintronics  
XAFS

Fe in GaN

Incorporations  
Series  
Co-doping

Mn in Ge

Models  
NCs results

Mn in GaAs

Models  
Surface study  
Etch-anneal

Conclusions

- Low-temperature Molecular Beam Epitaxy  $\Rightarrow$  non-equilibrium growth (increase Mn incorporation into GaAs host)
- Riber 32 R&D chamber, sources: standard effusion cells
- **Growth procedure** (monitored by RHEED):
  - 1 GaAs buffer layer on semi-insulating (001) GaAs substrate at 590 °C + cooled to 200–300 °C
  - 2 LT-GaAs (0–100 nm)
  - 3 Ga<sub>1-x</sub>Mn<sub>x</sub>As at 250 °C (x=6%, 133 nm)
  - 4 LT-GaAs capping layer (0–6 nm)
- Annealing: at  $\approx$ 285 °C for 70 min in N<sub>2</sub>

## Curie temperature

From  $\approx$ 60 K in *as deposited* samples to  $\approx$ 110 K with annealing  $\Rightarrow$  surface migration of Mn<sub>interstitial</sub> defects and neutralization with oxide

[Kirby *et al.*, Phys. Rev. B 2006]



Soutenance de thèse

M. Rovezzi

Introduction

Spintronics  
XAFS

Fe in GaN

Incorporations  
Series  
Co-doping

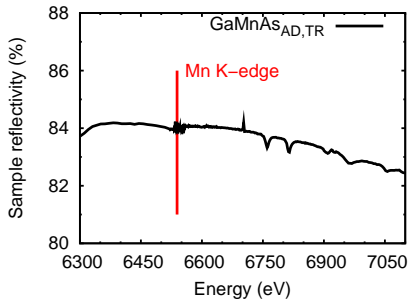
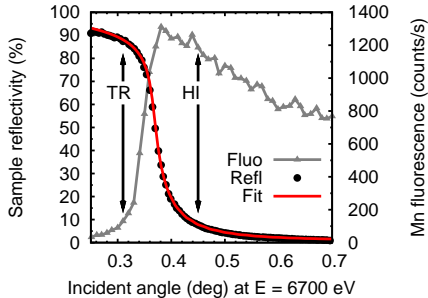
Mn in Ge

Models  
NCs results

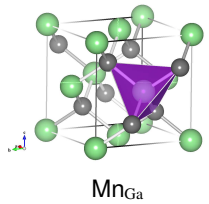
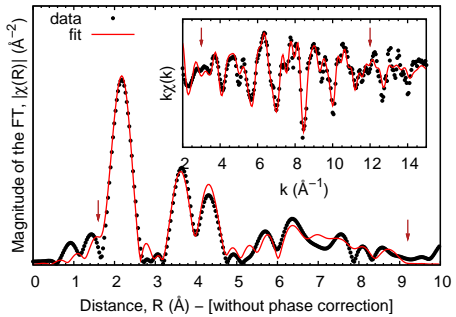
Mn in GaAs

Models  
Surface study  
Etch-anneal

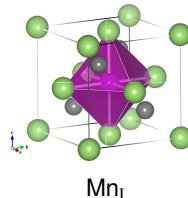
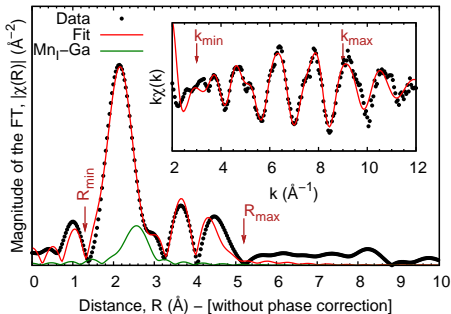
Conclusions



- Mn K-edge fluorescence in grazing-incidence mode
- Working around critical angle  $\theta_c \approx 0.35^\circ$
- **Total reflection** ( $0.80\theta_c$ ): probing the surface (< 10 nm)
- **High incidence** ( $1.2\theta_c$ ): probing the whole doped layer
- Reflectivity monitored during the energy scan



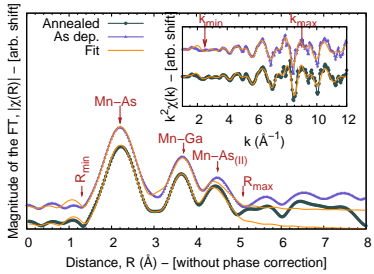
- First shell expansion: Mn-As @ 2.50(1) Å, typical 2% exp.
- Local structure well fitted up to VI coordination shell
- Model with minimum set of variables and Debye correlated model for  $\sigma^2$



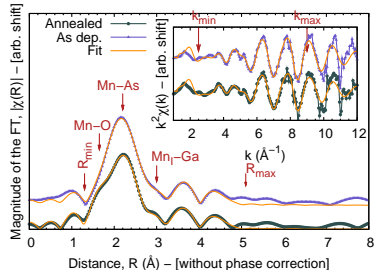
- Model:  $\Xi Mn_I + (1-\Xi) Mn_{Ga}$
- Fingerprint: 6 Mn-Ga at 2.827  $\text{\AA}$  (crystallographic)
- First shell  $\approx 2\%$  exp.,  $\approx 1\%$  upper distances
- $10(5)\% < \Xi < 20(5)\%$  in selected samples ( $\chi^2$ -tested)

- Oxide contribution by 6 Mn-O at 2.222(1)  $\text{\AA}$  (cryst.)
- MnO detectable only in RefleEXAFS ( $< 6$  nm GaAs CL)

## Standard geometry



## RefLEXAFS at HI



- The same parameters for the extraction and the fits
- Only Mn<sub>Ga</sub> is detected in the first case while in the second also Mn<sub>I</sub> and MnO are visible
- The surface study is crucial in understanding Mn<sub>I</sub> mobility and interaction with the thin surface oxide layer

# Surface systematic study

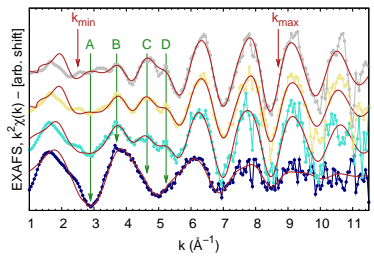
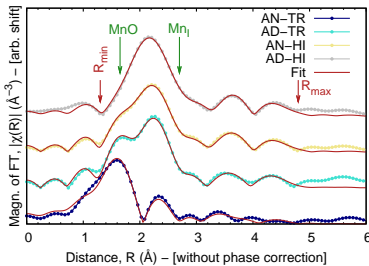
As function of annealing and GaAs capping layer

- Soutenance de thèse
- M. Rovezzi
- Introduction
- Spintronics
- XAFS
- Fe in GaN
- Incorporations
- Series
- Co-doping

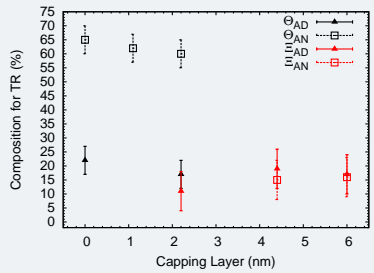
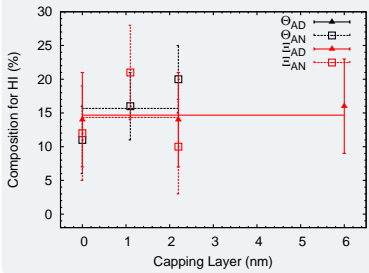
- Mn in Ge
- Models
- NCs results

- Mn in GaAs
- Models
- Surface study
- Etch-anneal

- Conclusions



## Results



[Olejnik *et al.*, Phys. Rev. B (2008)]

## *In situ* post-growth etch-anneal procedure

- 1 (E)XAFS
- 2 **Etching**
  - 30s in 35% HCl
  - rinsing in water + blow dry by N<sub>2</sub> gas
  - transfer to vacuum chamber
- 3 (E)XAFS
- 4 **Annealing**
  - 20 min at 200 °C on hotplate under N<sub>2</sub> gas flow
  - rapid quench to room temperature under N<sub>2</sub> gas flow
  - transfer to vacuum chamber
- 5 (E)XAFS
- 6 Steps 2–5 repeated

Soutenance de  
thèse

M. Rovezzi

Introduction

Spintronics  
XAFS

Fe in GaN

Incorporations  
Series  
Co-doping

Mn in Ge

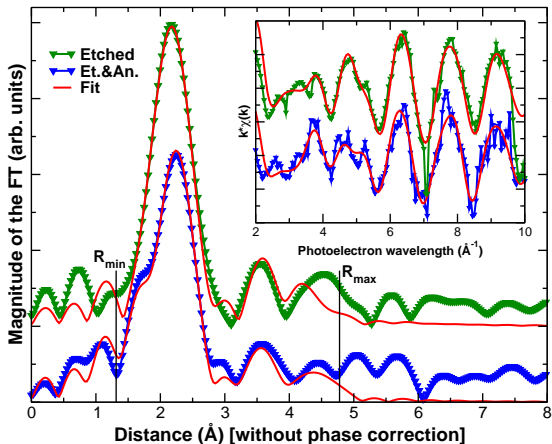
Models  
NCs results

Mn in GaAs

Models  
Surface study  
Etch-anneal

Conclusions





	$\phi w$	MnO		Mn <sub>I</sub>		Mn <sub>Ga</sub>			
		$\Theta$ (%)	$R_O$ (Å)	$\Xi$ (%)	$R_{Ga}$ (Å)	$R_{As}$ (Å)	$\sigma_{As}^2$ (Å <sup>2</sup> )	$R_{Ga}$ (Å)	$\sigma_{Ga}^2$ (Å <sup>2</sup> )
		±5	±0.02	±7	±0.06	±0.01	±0.002	±0.05	±0.005
Et.	HI	–	–	–	–	2.50	0.007	4.06	0.017
	TR	12	2.14	19	2.94	2.50	0.007	4.02	0.014
Et.&An.	HI	7	2.14	–	–	2.51	0.006	4.03	0.025
	TR	12	2.15	14	2.82	2.49	0.004	4.04	0.018

Soutenance de  
thèse

M. Rovezzi

Introduction

Spintronics

XAFS

Fe in GaN

Incorporations

Series

Co-doping

Mn in Ge

Models

NCs results

Mn in GaAs

Models

Surface study

Etch-anneal

Conclusions

- **Fe incorporation in GaN can be efficiently controlled** by Fe flow, growth rate, and co-doping with Si
- EXAFS well identify the substitutional phase (**Fe<sub>Ga</sub>**) and the presence of precipitates (**ε-Fe<sub>3</sub>N**)
- The aggregation of Fe cations can be minimized by **increasing the growth rate and by co-doping with Si**, shifting the solubility limit towards higher Fe content at given growth conditions
- Detailed informations about **Fe charge state are obtained from XANES**: from Fe<sup>3+</sup> (isoelectronic impurity) to partial reduction Fe<sup>2+</sup> upon Si addition (Fermi level engineering)
- **Co-doping with Mg** do not introduce charge shift but promotes precipitation (difficult to distinguish by XAFS)
- Exploiting the **complementarity of XAFS with XRD and TEM** permits a fine structural characterization of this system at the nano-scale



Soutenance de  
thèse

M. Rovezzi

Introduction

Spintronics  
XAFS

Fe in GaN

Incorporations  
Series  
Co-doping

Mn in Ge

Models  
NCs results

Mn in GaAs

Models  
Surface study  
Etch-anneal

Conclusions

- The **high local disorder** reduces the information content in the EXAFS spectra (like Mn in Si [A. Wolska *et al.*, *Phys. Rev. B* 2007])
- Mn-rich NCs present a **complex local structure** that cannot be described only with a substitutional model
- Additional interatomic distances have to be considered in the EXAFS analysis which are in good qualitative and quantitative agreement with the structure of **one of the Ge-3Mn building block tetrahedron** found in  $\text{Ge}_3\text{Mn}_5$  crystal
- Samples grown at low temperature or low Mn content present **additional hexagonal interstitial-like** defects ( $\approx 10\%$ )



Soutenance de  
thèse

M. Rovezzi

Introduction

Spintronics

XAFS

Fe in GaN

Incorporations

Series

Co-doping

Mn in Ge

Models

NCs results

Mn in GaAs

Models

Surface study

Etch-anneal

Conclusions

- LT-MBE permits the fabrication of a good DMS system with **Mn main incorporation as Mn<sub>Ga</sub>** in a crystalline environment
- **Enrichment of Mn<sub>I</sub> at the surface**: detected in grazing-incidence and not in standard geometry ⇒ GIXAFS/RefLEXAFS is powerful local probe to study surface phenomena
- The **effects of post-growth annealing on Mn<sub>I</sub> surface migration** are investigated but it is not possible to link the observed efficacy of this method to the interaction with the surface oxide
- The presence of the **oxide phase reduces the sensitivity to Mn<sub>I</sub>**, even with the use of a GaAs capping layer of different thickness
- The **etch-annealing process is fruitful in removing Mn<sub>I</sub>** ⇒ first direct evidence of the neutralization process induced by this method



Soutenance de  
thèse

M. Rovezzi

Introduction

Spintronics

XAFS

Fe in GaN

Incorporations

Series

Co-doping

Mn in Ge

Models

NCs results

Mn in GaAs

Models

Surface study

Etch-anneal

Conclusions

- The present work has permitted to find out the **potentialities and limits of XAFS spectroscopy** in the study of semiconductor spintronics
- **A wide spectrum of the most promising materials** in this field has been examined (keeping apart semiconductor oxides while Mn-doped II-VI class investigated in the early times)
- **Experimental work**: implementation of a new sample holder for measurements in grazing-incidence geometry and a new data analysis method for RefLEXAFS measurements
- XAFS combined with complementary advanced characterization tools helps in the **fine tuning of the deposition parameters and post-growth treatments**



Soutenance de  
thèse

M. Rovezzi

Introduction

Spintronics

XAFS

Fe in GaN

Incorporations

Series

Co-doping

Mn in Ge

Models

NCs results

Mn in GaAs

Models

Surface study

Etch-anneal

Conclusions

- Fermi level engineering to increase the solubility limit (demonstrated here for GaFeN) on GaMnAs [Cho *et al.*, Appl. Phys. Lett. (2008)] and GeMn [Chen *et al.*, Phys. Rev. B (2009)] via *n*-type counter-doping
- Fine tune the temperature parameter and adopt Fe doping in  $\delta$ -fashion to obtain Fe-rich nanocolumns in GaN
- High-level doping with shallow acceptors to reach the metal-insulator transition and have high- $T_C$  ferromagnetism (moving from weak to strong coupling regime) [Dietl, Phys. Rev. B (2008)]



Soutenance de thèse  
M. Rovezzi

Introduction  
Spintronics  
XAFS

Fe in GaN  
Incorporations  
Series  
Co-doping

Mn in Ge  
Models  
NCs results

Mn in GaAs  
Models  
Surface study  
Etch-anneal

Conclusions

- Mn:GaAs** Jacek K. Furdyna<sup>1</sup> and Xinyu Liu<sup>1</sup>
- Fe:GaN** Alberta Bonanni<sup>2</sup>, Andrea Navarro-Quezada<sup>2</sup>, Tian Li<sup>2</sup>, Bogdan Faina<sup>2</sup>, Tomasz Dietl<sup>3</sup>, Piotr Bogusławski<sup>3</sup>, Paweł Jakubas<sup>3</sup>, Aldo Amore Bonapasta<sup>4</sup> and Francesco Filippone<sup>4</sup>
- Mn:Ge** Matthieu Jamet<sup>5</sup>, Thibaut Devillers<sup>5</sup>, André Barski<sup>5</sup>, Clément Porret<sup>5</sup>, Vincent Favre-Nicolin<sup>5</sup>, Samuel Tardif<sup>5</sup>, Emmanuel Arras<sup>5</sup>, Pascal Pochet<sup>5</sup> and Ing-Song Yu<sup>5</sup>
- Mn:NWs** Federico Boscherini<sup>6</sup>, Fauzia Jabeen<sup>7</sup>, Silvia Rubini<sup>7</sup> and Faustino Martelli<sup>7</sup>
- GILDA** Francesco d'Acapito<sup>8</sup>, Chiara Maurizio<sup>8</sup> and Fabrizio Bardelli<sup>8</sup>

- 1 Department of Physics, University of Notre Dame, Indiana, USA
- 2 Institute for Semiconductor and Solid State Physics, Johannes Kepler University, Linz, Austria
- 3 Institute of Physics, Polish Academy of Sciences, Warsaw, Poland
- 4 Istituto di Struttura della Materia (ISM), Consiglio Nazionale delle Ricerche, Rome, Italy
- 5 DRFMC/SP2M, CEA-Grenoble, France
- 6 Department of Physics and CNISM, University of Bologna, Italy
- 7 CNR-INFM-TASC, Trieste, Italy
- 8 CNR-INFM-OGG GILDA CRG c/o ESRF, Grenoble, France



Soutenance de  
thèse

M. Rovezzi

Introduction

Spintronics  
XAFS

Fe in GaN

Incorporations  
Series  
Co-doping

Mn in Ge

Models  
NCs results

Mn in GaAs

Models  
Surface study  
Etch-anneal

Conclusions

## Further acknowledgements

- *Consiglio Nazionale delle Ricerche* (financial support)
- *Settimio Mobilio* (GILDA CRG responsible)
- *ESRF* (synchrotron radiation and stimulating research infrastructure)

## Bibliographic databases

*My personal collection (≈600 refs.):*

<http://www.mendeley.com/profiles/mauro-rovezzi>

*Ferromagnetic Semiconductor Spintronics Web Project:*

<http://unix12.fzu.cz/ms/>





Soutenance de  
thèse

M. Rovezzi

Mn in NWs

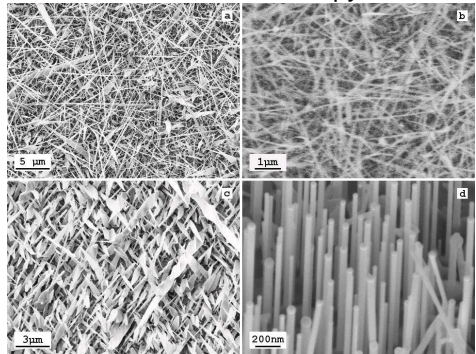
Local structure

In collaboration with



- Solid-state molecular beam epitaxy (VLS growth)
- **Catalyzed by Mn** (5 ML, 1 nm) and Au (10 ML, 2 nm) [+doped with Mn]
- Growth temperature: 535 °C – 620 °C
- Different substrates: GaAs and SiO<sub>2</sub>

## Electron microscopy



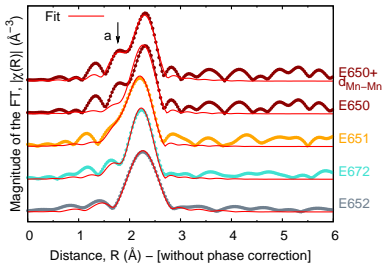
SEM images: (a) Mn-cat GaAs on SiO<sub>2</sub>; (b) Mn-cat InAs on SiO<sub>2</sub>; (c) Mn-cat GaAs on GaAs; (d) Au-cat GaAs on GaAs(111)

- Mn K-edge in fluorescence mode @ GILDA [standard geometry, low temp.: 10 K]
- All samples etched *in-situ* and transferred to vacuum chamber to avoid oxide formation
- Systematic study varying deposition parameters

### Characterized samples

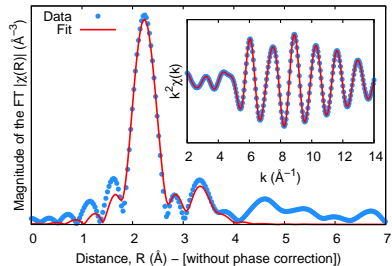
Sample	Wire	Cat.	Temp. (°C)	Time (min)
E650	GaAs	Mn	540	30
E651	GaAs	Mn	580	30
E672	GaAs	Mn	610	30
E652	GaAs	Mn	620	30
E656	GaAs	Au	540	30
E697	GaAs	Au	580	30
E683	InAs	Mn	390	60

## GaAs NWs

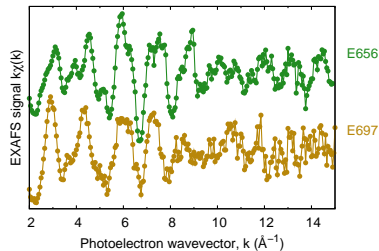
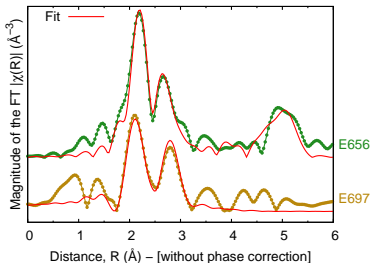


- High local disorder
- $\text{Mn}_{\text{Ga}}$  **but** Mn-As at  $2.58 \text{ \AA}$   $\Rightarrow$  MnAs clusters
- Mn-Mn at  $2.15 \text{ \AA}$  (no Mn-O!)

## InAs NWs



- Low local disorder
- No Mn substitutional in wz-InAs
- Mn in hexagonal MnAs  
Mn-Mn at  $2.85 \text{ \AA}$  and  $3.72 \text{ \AA}$



- $\text{Mn}_{\text{Ga}}$  with Mn-As at 2.58  $\text{\AA}$
- + cubic MnAu [Mn-Au at 2.79  $\text{\AA}$ ]
- Fingerprint: Mn-Au-Mn collinear scattering path

- **Mn-As bond distance of 2.56–2.58 Å**, longer than the expected value for a substitutional site and probably due to the occupation of defect sites  $\Rightarrow$  seeds for the formation of hexagonal MnAs precipitates
- **Hexagonal MnAs** clearly forms in Mn-cat. InAs NWs (well ordered local structure)
- **Mn-Mn dimers at 2.15 Å** found in Mn-cat. GaAs NWs (also reported by other groups: Mn-doped InAs at 2.19 Å, Mn-doped Ge at 2.04 Å)
- Mn in Au-catalyzed NWs forms an **intermetallic alloy with Au** resulting in a well ordered cubic MnAu