

Modelling vesicle dynamics in extended geometries and in microfluidic devices

Modélisation de vésicules en géométrie étendue et dans des systèmes micro-fluidiques

Badr KAOUI

Laboratoire de Spectrométrie Physique (Grenoble, France)
and

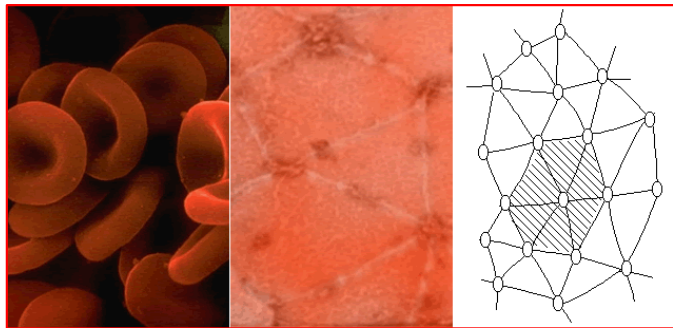
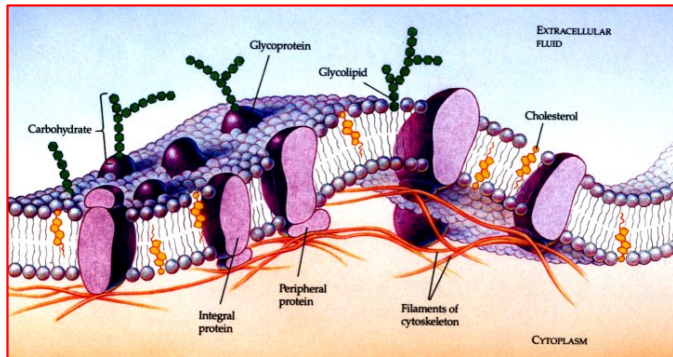
Laboratoire de Physique de la Matière Condensée (Casablanca, Morocco)

Contents

- Vesicle model
- Simple shear flow
- Unbounded Poiseuille flow
- Confined geometries and micro-fluidic devices
- Two interacting vesicles
- Conclusions

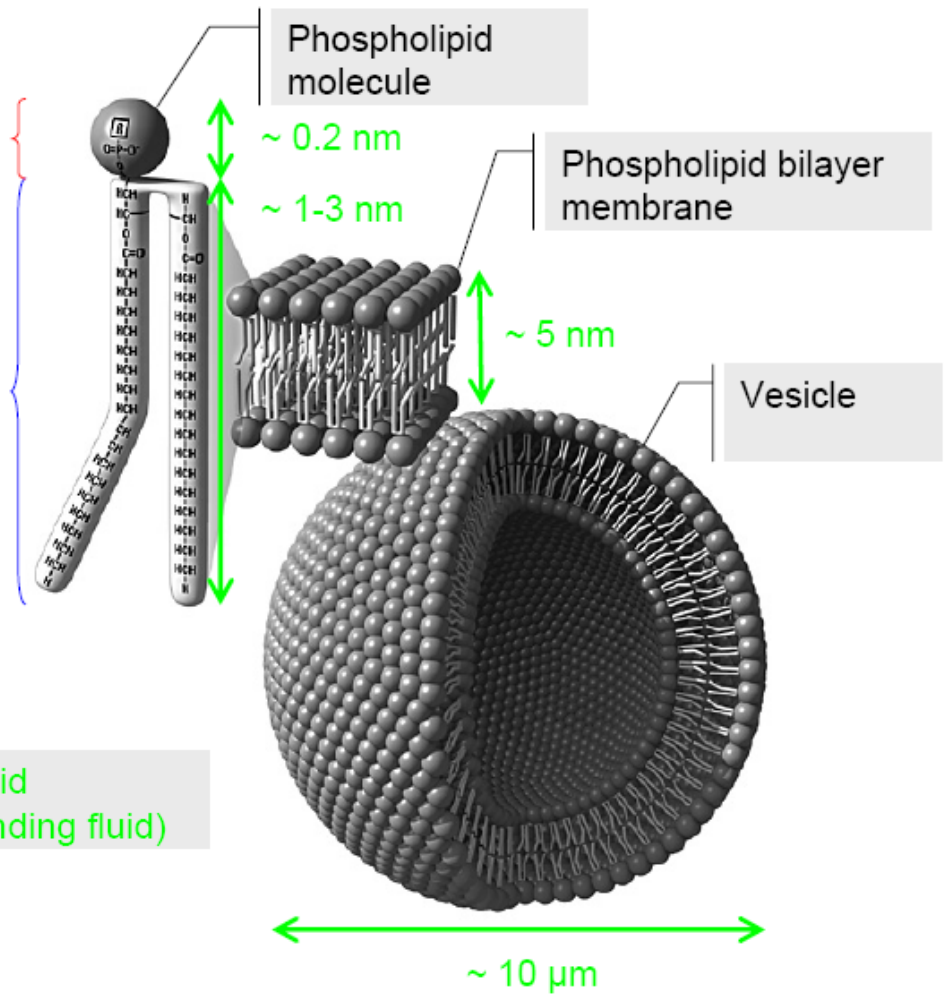
Vesicle model

What is a vesicle?



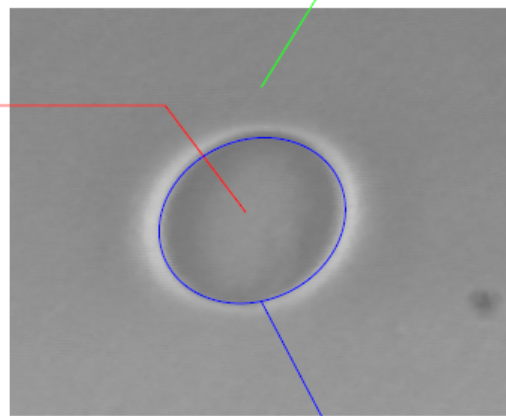
Hydrophilic phosphate head (polar)

Two hydrophobic fatty acid tails (non polar)



External fluid (the suspending fluid)

Internal fluid (the encapsulated fluid)



Phospholipid membrane (fluid membrane)

$\sim 10^{10}$ Molecules

(Nasa Astrobiology Institute)

A phase-contrast micrograph (V. Vitkova)

Vesicle properties

- A conserved volume V (area S in 2D)
- A conserved area S (perimeter L in 2D)
- The vesicle membrane energy:

Membrane rigidity

$$\kappa \sim 10^{-19} \text{ J}$$

Local membrane curvature

$$E = \frac{\kappa}{2} \int_{\partial\Omega} H^2 dS + \int_{\partial\Omega} \zeta dS.$$

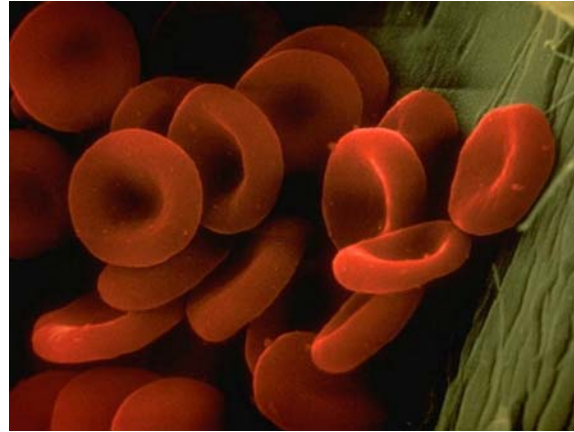
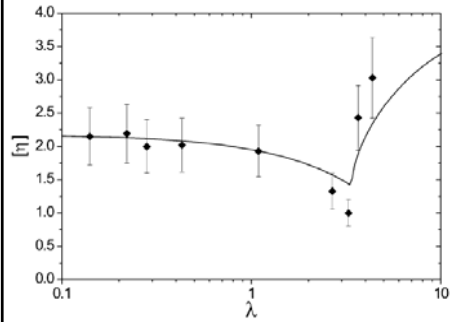
The Helfrich curvature energy

Lagrange multiplier
(area conservation constraint)

Membrane force

$$\mathbf{f} = -\frac{\delta E}{\delta \mathbf{r}}$$

Biomedical engineering applications

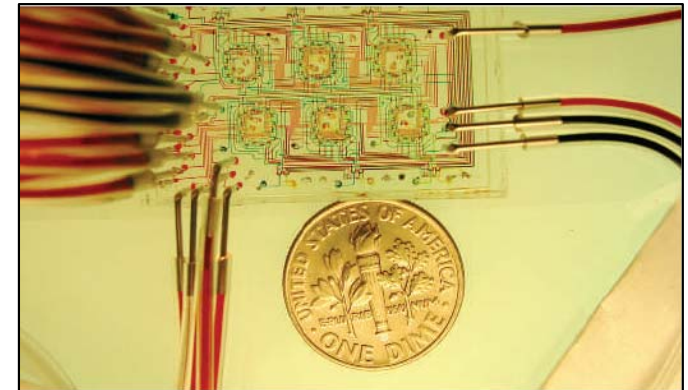


Blood rheology

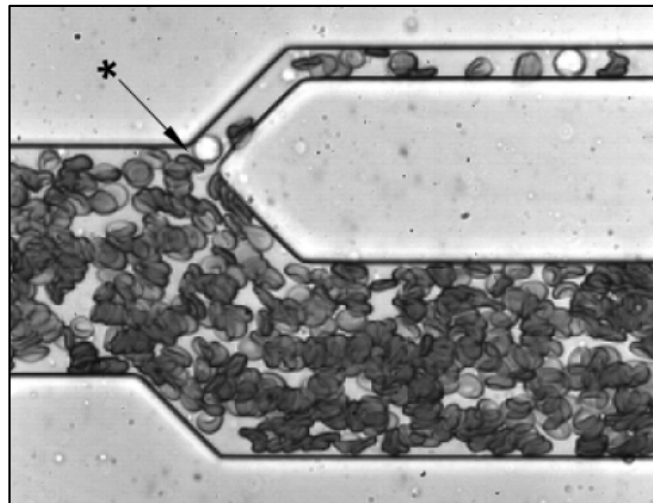


A lab

A lab-on-chip



(S. R. Quake, Stanford University)

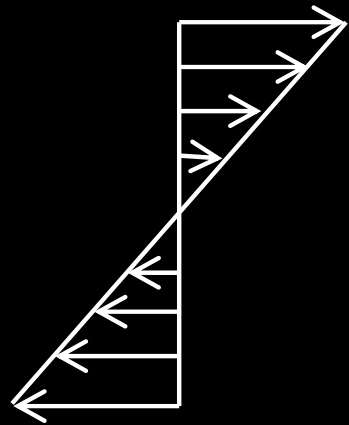


Microfluidic device to sort out WBCs from a whole blood sample
(L. L. Munn, MGH)



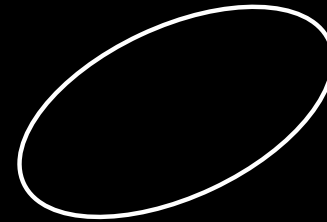
Medical diagnostic on a drop of blood using a lab-on-chip (CNRS)⁶

Vesicle dynamics under shear flow



Shear flow

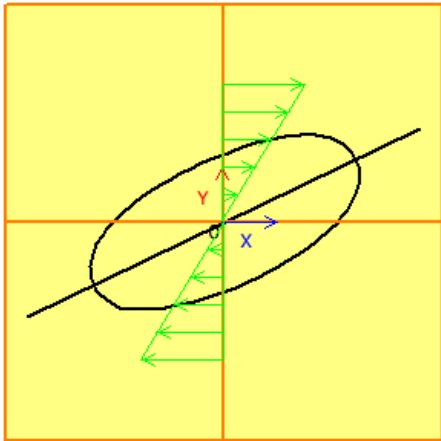
+



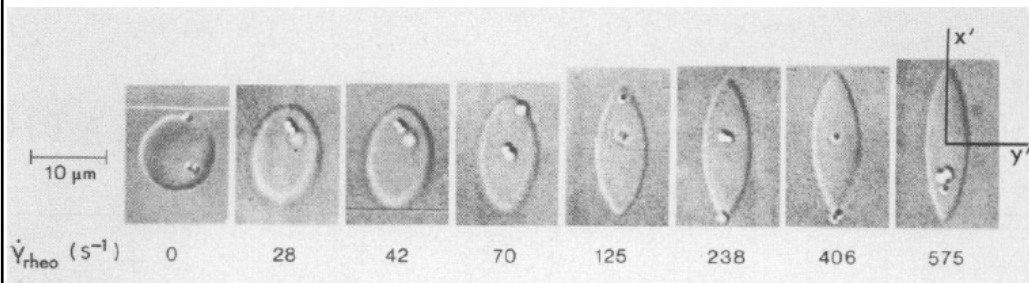
Vesicle

Dynamical regimes under shear flow

Tank-treading



T. M. Fischer *et al* Science (1978)



λ_C

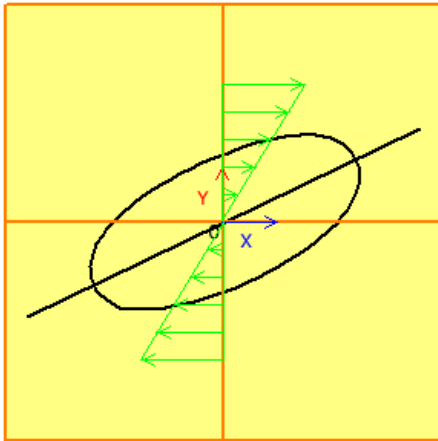
1 \longrightarrow ∞

$$\lambda = \frac{\eta_{int}}{\eta_{ext}}$$

8

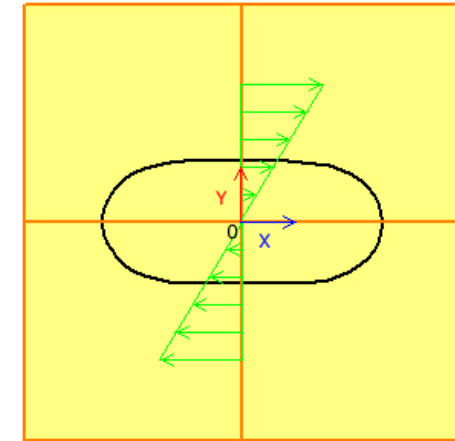
Dynamical regimes under shear flow

Tank-treading

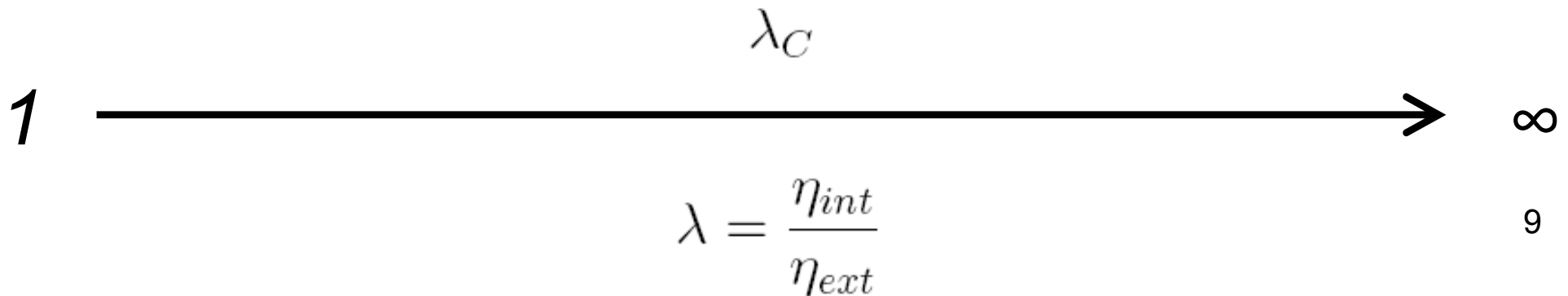


T. M. Fischer *et al* Science (1978)

Tumbling

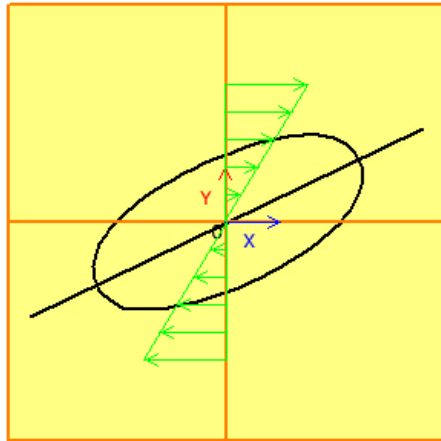


S. R. Keller & R. Skalak JFM (1982)



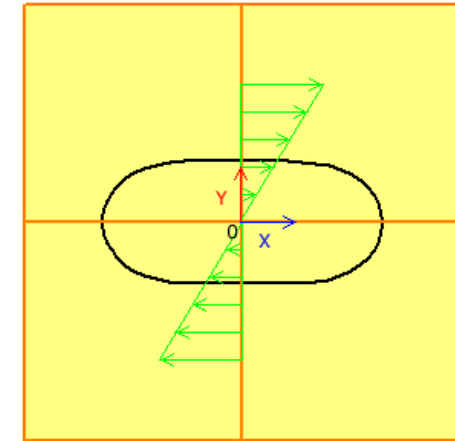
Dynamical regimes under shear flow

Tank-treading

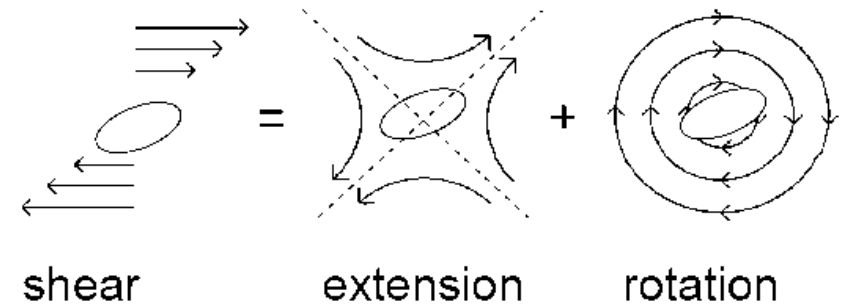


T. M. Fischer *et al* Science (1978)

Tumbling



S. R. Keller & R. Skalak JFM (1982)



λ_C

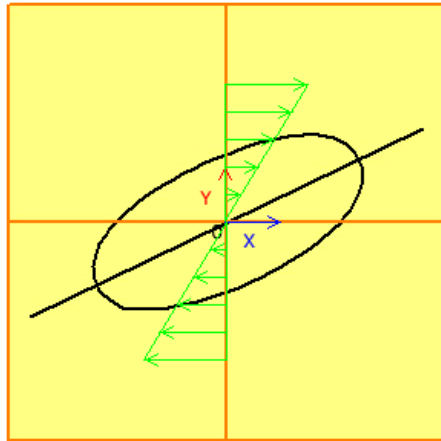


$$\lambda = \frac{\eta_{int}}{\eta_{ext}}$$

10

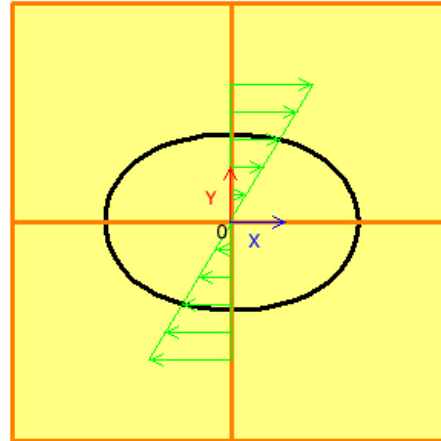
Dynamical regimes under shear flow

Tank-treading



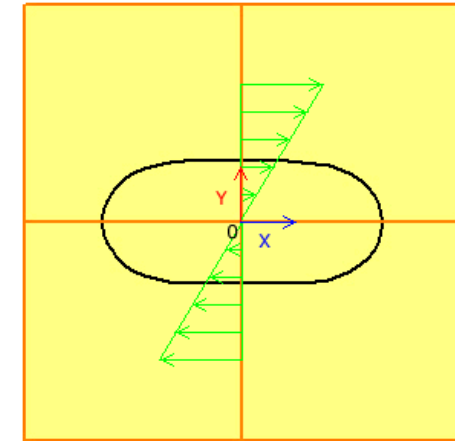
T. M. Fischer *et al* Science (1978)

Vacillating-breathing



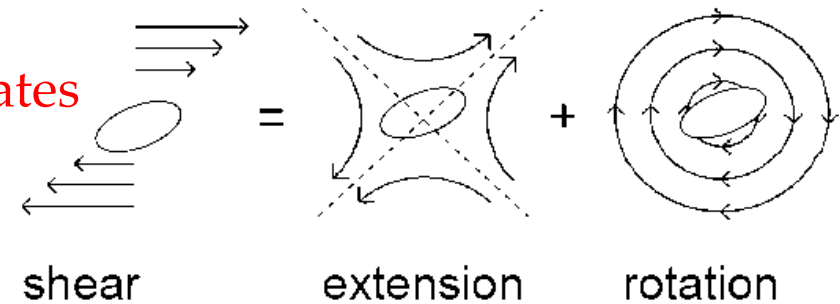
C. Misbah PRL (2006)

Tumbling



S. R. Keller & R. Skalak JFM (1982)

At higher shear rates



λ_C

1



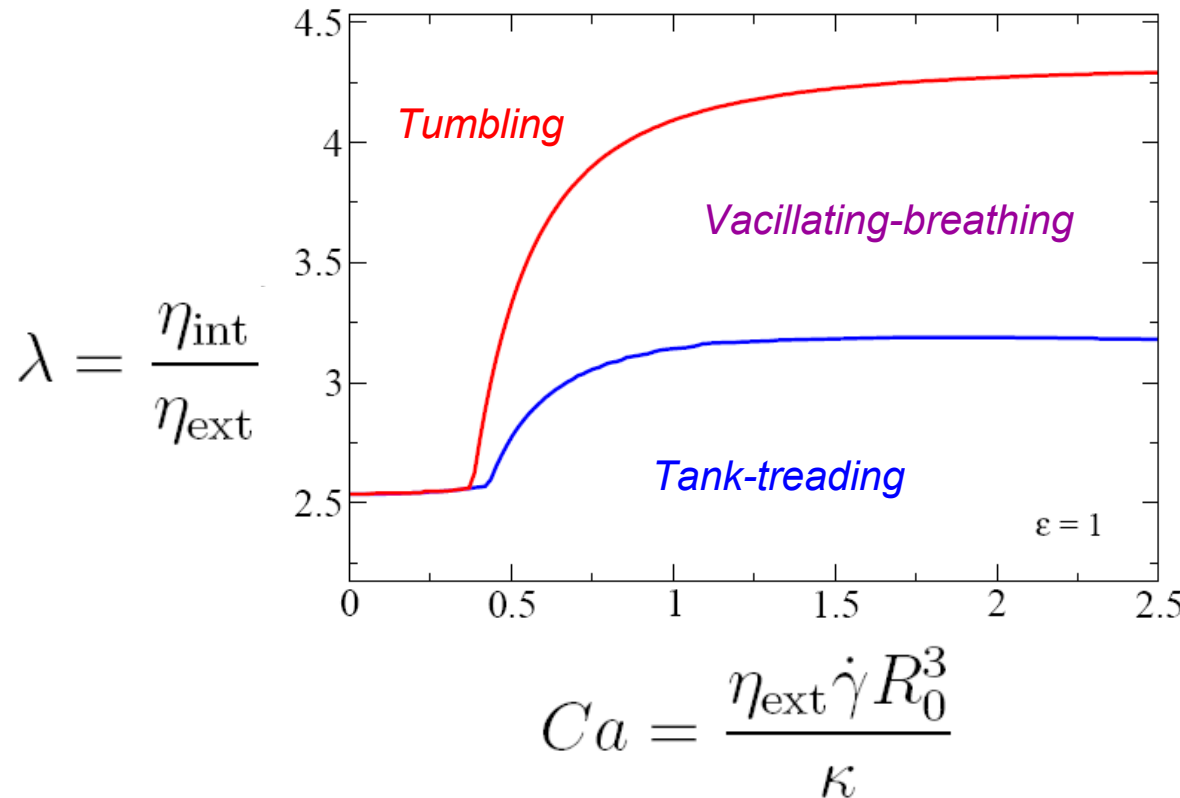
∞

$$\lambda = \frac{\eta_{int}}{\eta_{ext}}$$

Three main key parameters

- The viscosity contrast: $\lambda = \frac{\eta_{int}}{\eta_{ext}}$
- The excess area: $A = (4\pi + \Delta) R_0^2$
- The capillary number: $Ca = \frac{\tau_{shape}}{\tau_{flow}} = \frac{\eta_{ext} R_0^3 \dot{\gamma}}{\kappa}$

Phase-diagram

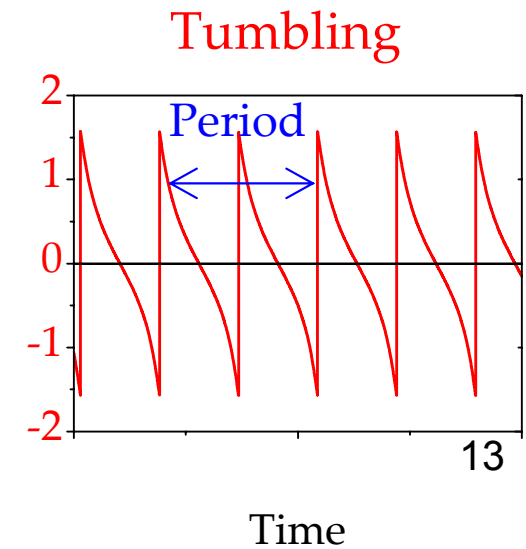
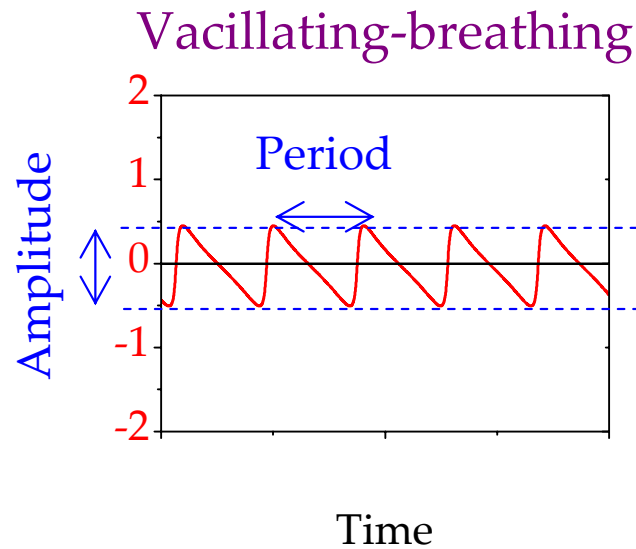
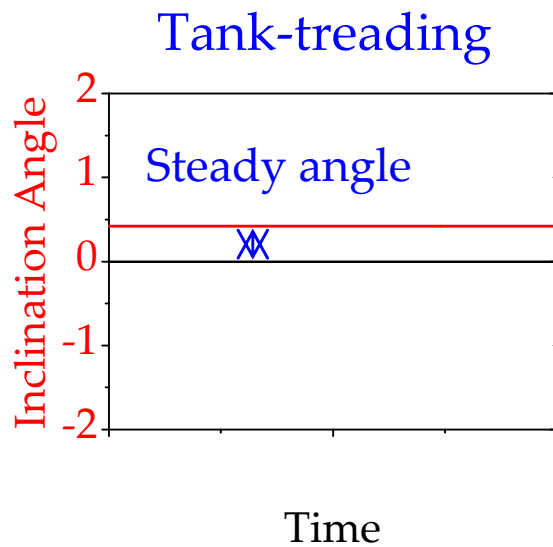


Theory

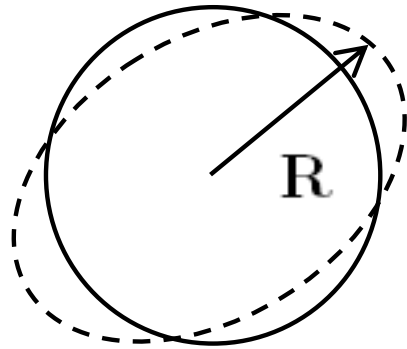
G. Danker *et al* PRE (2007)
 V. V. Lebedev *et al* PRL (2007)
 H. Noguchi & Gompper PRL (2007)

Experiment

J. Deschamps *et al* PRL (2009)



Small deformation theory



Vesicle shape deviation from a sphere

$$\mathbf{R}(\theta, \phi) = R_0 [1 + \epsilon f(\theta, \phi)] \mathbf{e}_r$$

$$\epsilon = \sqrt{\Delta}$$

C. Misbah PRL (2006)

Spherical harmonics

$$f(\theta, \phi) = \sum_{m=-2}^2 F_{2,m} Y_2^m = F_{2,-2} Y_2^{-2} + F_{2,0} Y_2^0 + F_{2,2} Y_2^2$$

Amplitude \rightarrow Dynamics

Shear flow

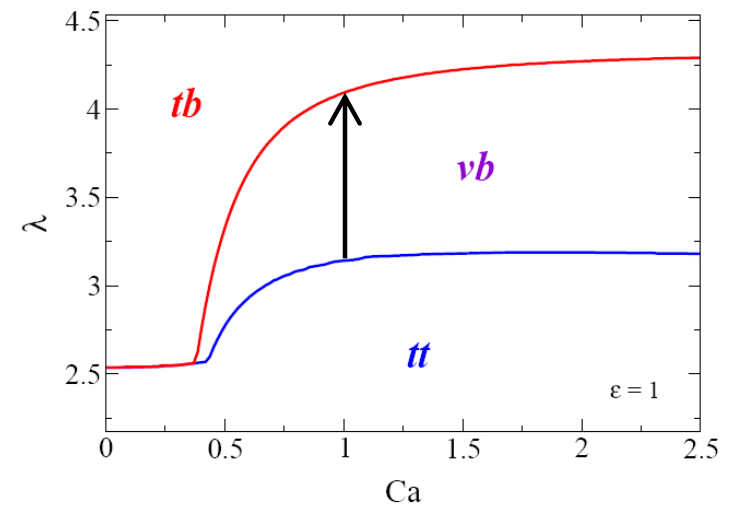
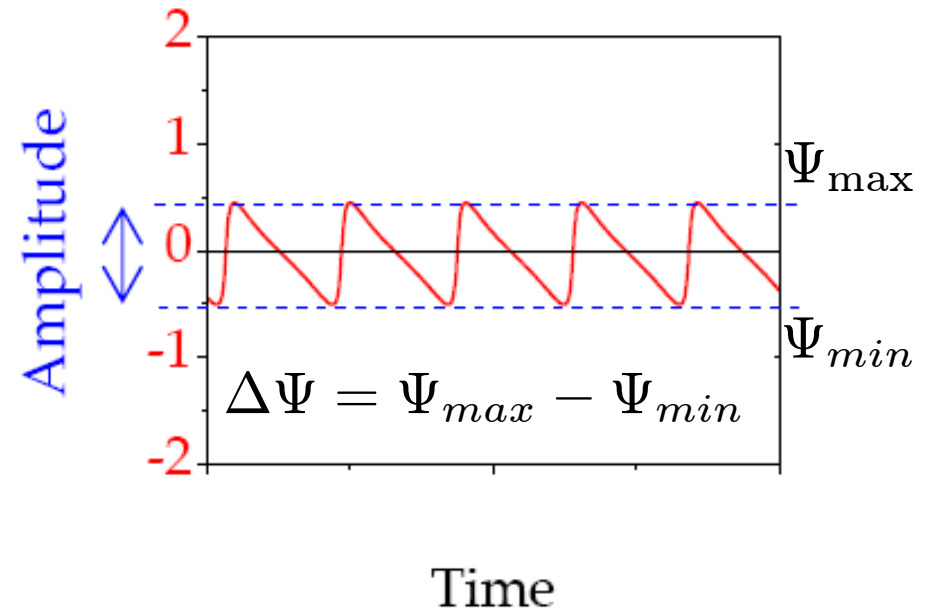
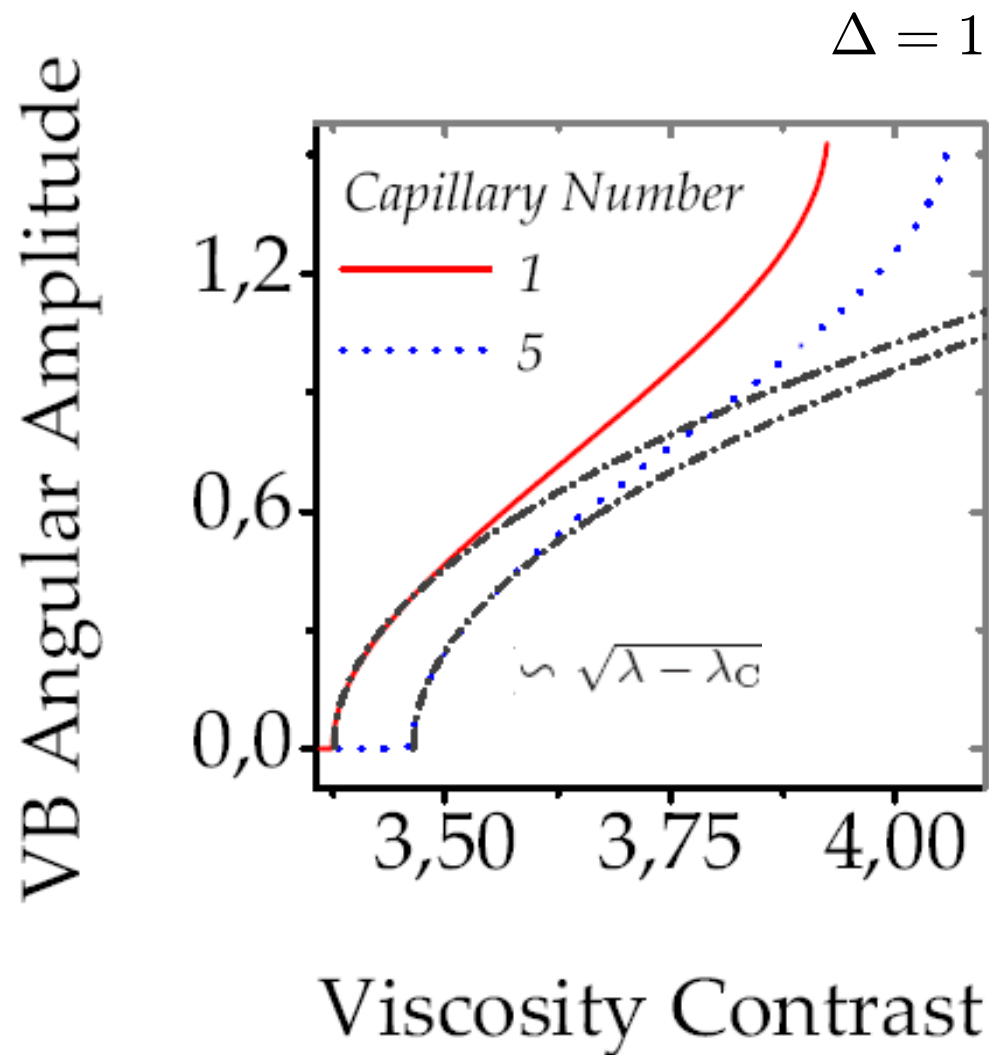
$$-i\epsilon \partial_t F_{22} = F_{22} - h + 2h\Delta^{-1}(|F_{22}|^2 - F_{22}^2) + \text{Higher order terms}$$

G. Danker *et al* PRE (2007)

$$h = f(\lambda)$$

Dynamical equation

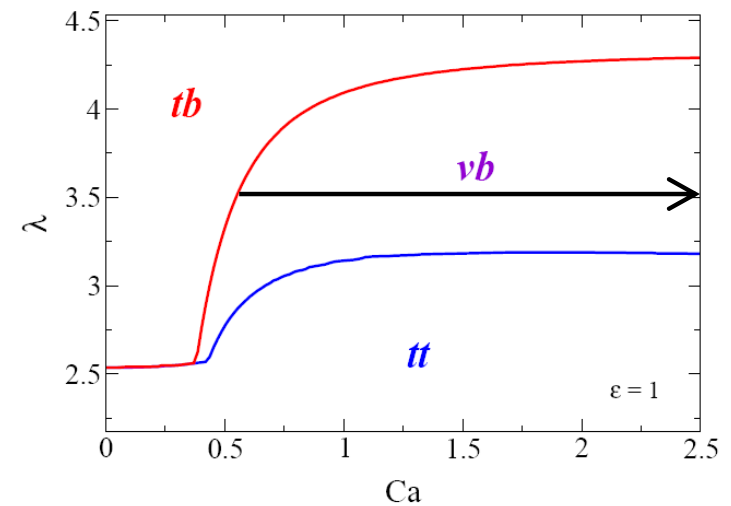
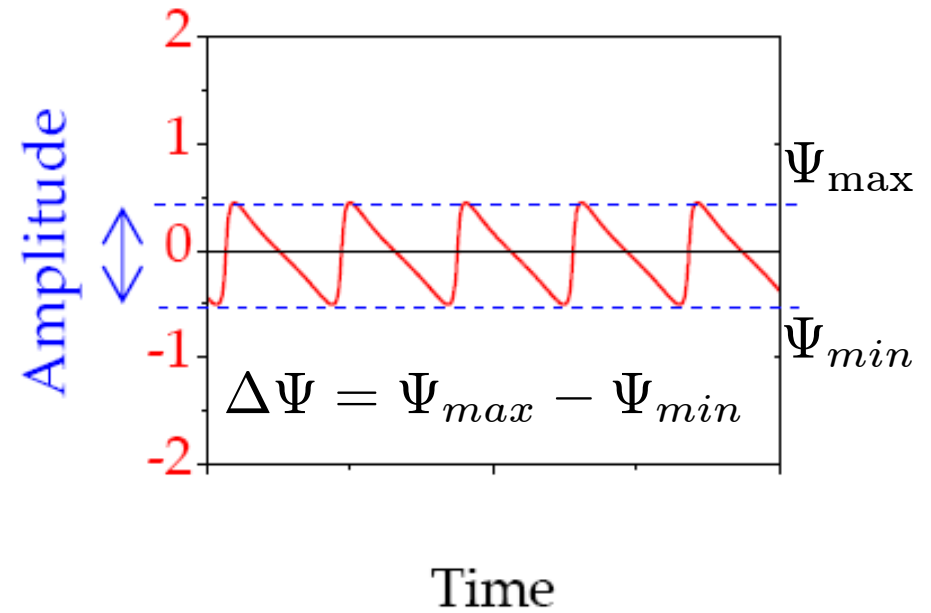
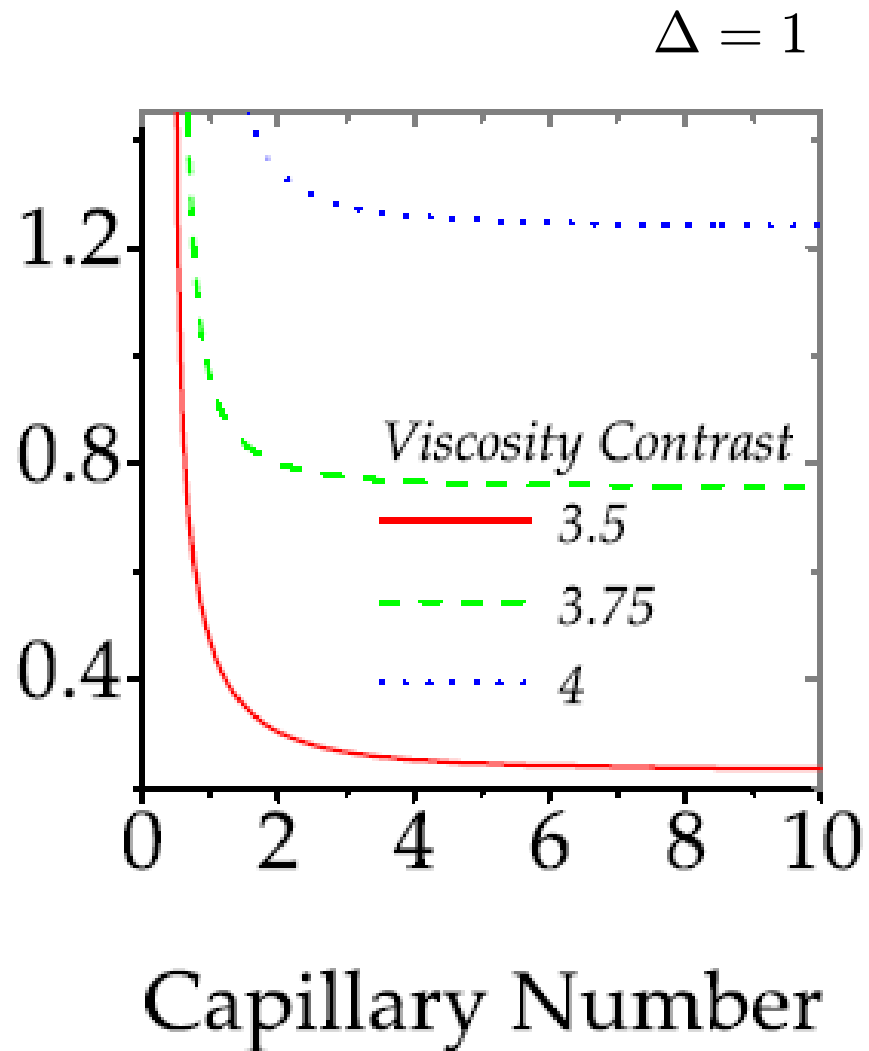
Vacillating-breathing (Amplitude)



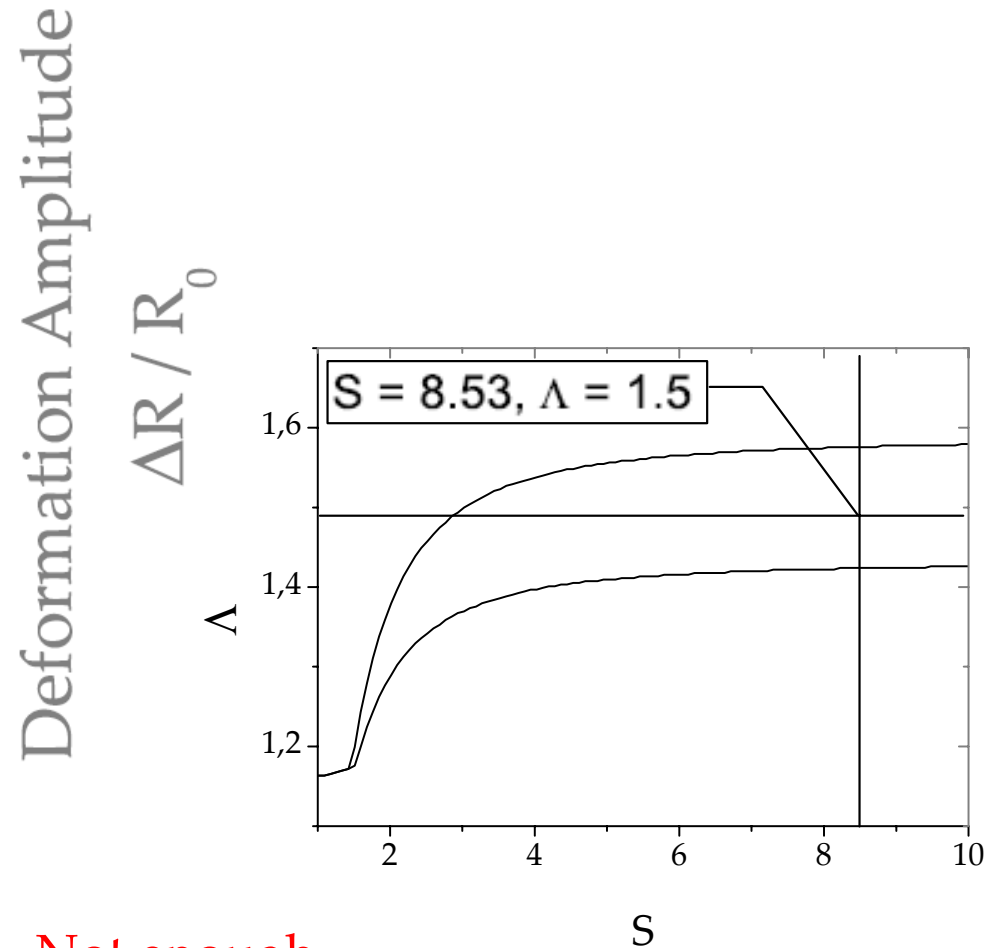
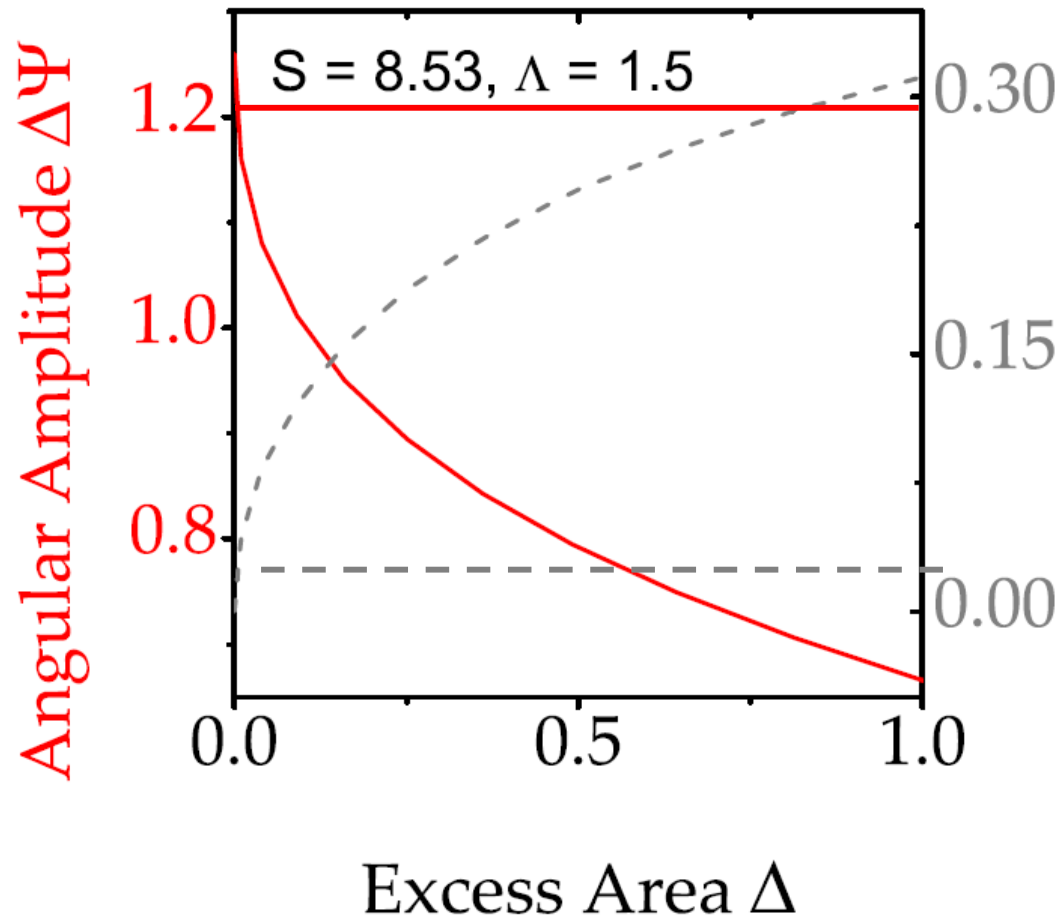
$$-\pi/4 < \Psi_{min} < \Psi_{max} < +\pi/4$$

Vacillating-breathing (Amplitude)

(b) VB Angular Amplitude



3 main key dimensionless parameters



(Δ, λ, Ca)

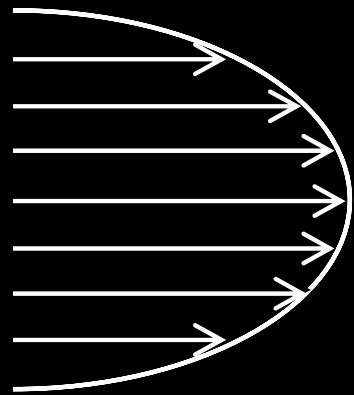
Not enough

~~(S, Λ)~~

$$S = f(Ca, \Delta)$$

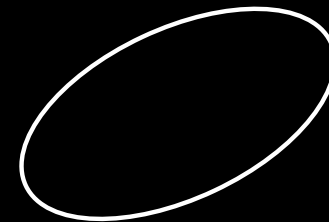
$$\Lambda = f(\lambda, \Delta)$$

Lateral migration and deformation of
a vesicle in
unbounded Poiseuille flow



Poiseuille flow

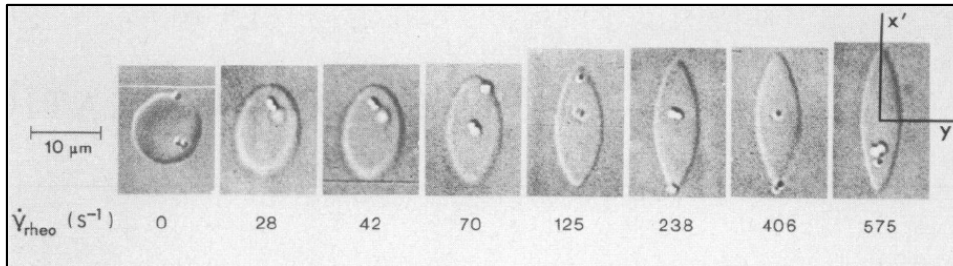
+



Vesicle

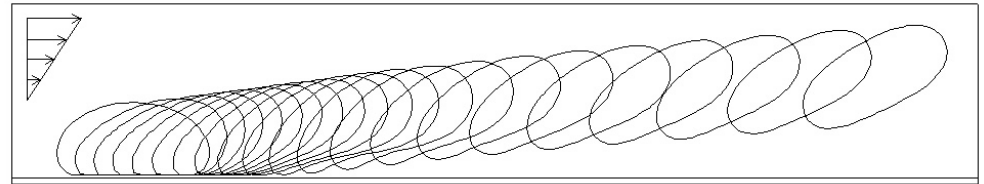
Motivations (Blood rheology)

Deformation of a RBC under shear flow



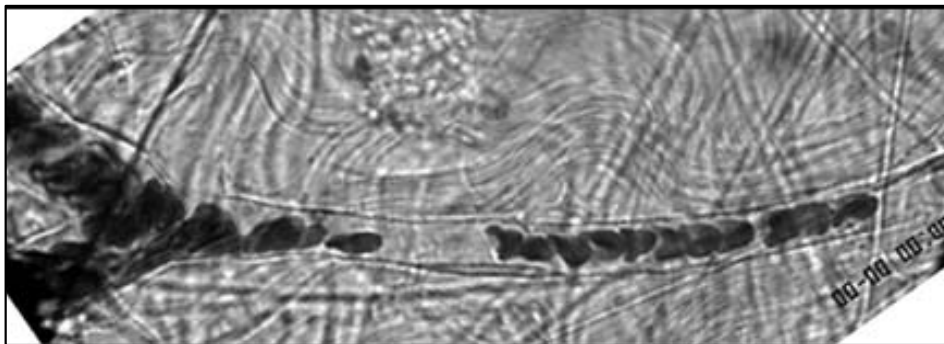
T. M. Fischer *et al* Science (1978)

Wall-induced lift force



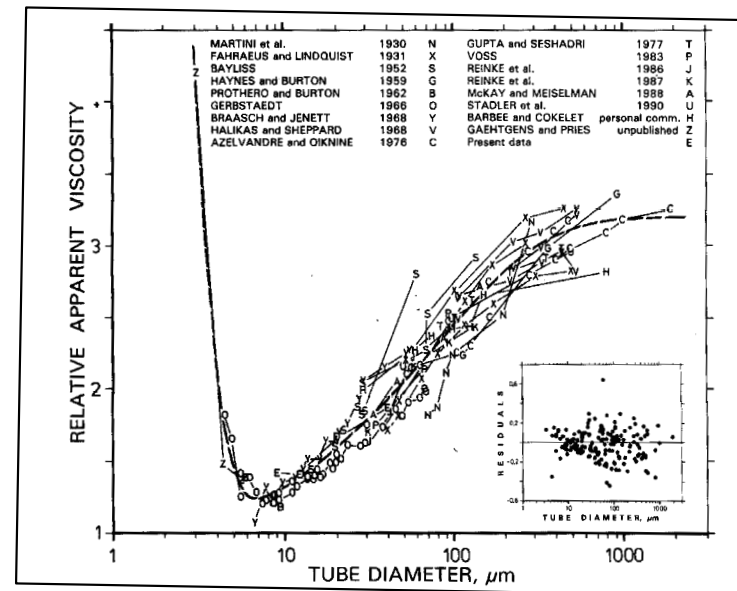
I. Cantat and C. Misbah PRL (1999)
M. Abkarian *et al* PRL (2002)

Lateral migration of RBCs



T. W. Secomb *et al* ABE (2007)

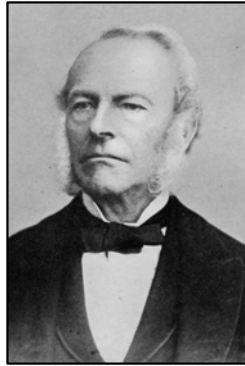
Fahraeus-Lindqvist effect



R. Fahraeus and T. Lindqvist, Am. J. Physiol. (1931)

The boundary integral method (BIM)

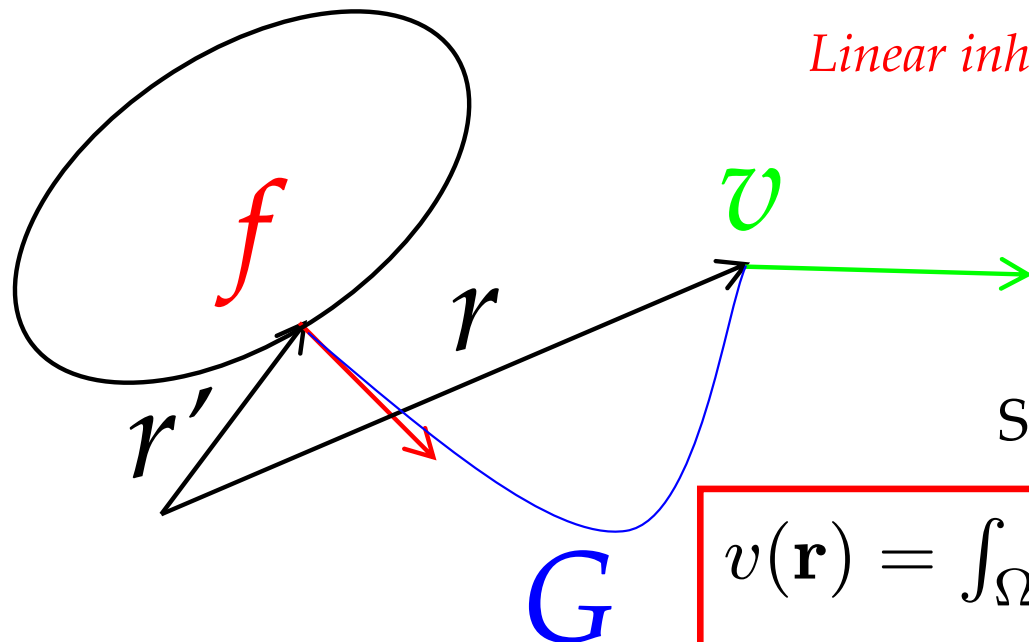
G. G. Stokes
(1819-1903)



Stokes equations

$$\begin{aligned}\eta \nabla^2 \mathbf{v}(\mathbf{r}) - \nabla p(\mathbf{r}) &= -f(\mathbf{r})\delta(\mathbf{r} - \mathbf{r}') \\ \nabla \cdot \mathbf{v}(\mathbf{r}) &= 0\end{aligned}$$

Linear inhomogeneous partial differential equations



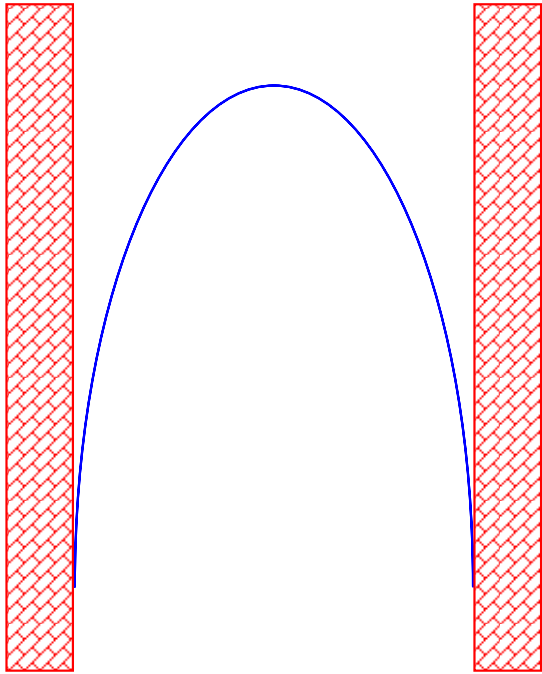
Solution (Integral equation)

$$\mathbf{v}(\mathbf{r}) = \int_{\Omega} \mathbf{G}(\mathbf{r}, \mathbf{r}') f(\mathbf{r}') ds(\mathbf{r}') + \mathbf{v}_{\text{Pois}}(\mathbf{r})$$

Solution in terms of the Green's function

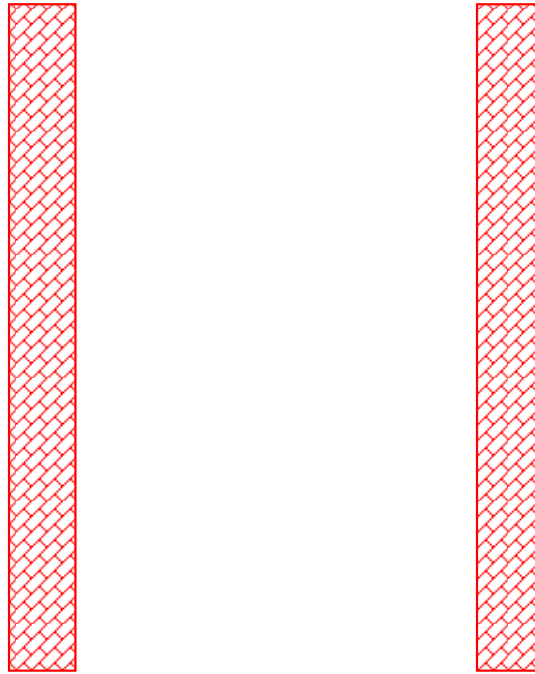
C. Pozrikidis (1992)
M. Kraus *et al* PRL (1996)
I. Cantat and C. Misbah PRL (1999)

What is an unbounded Poiseuille flow?



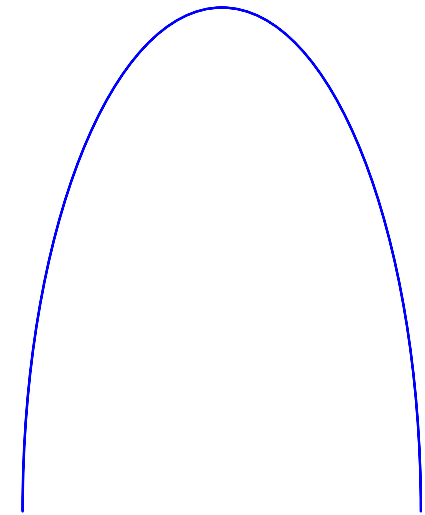
The Poiseuille flow
in a
confined geometry

—



The bounded walls

=



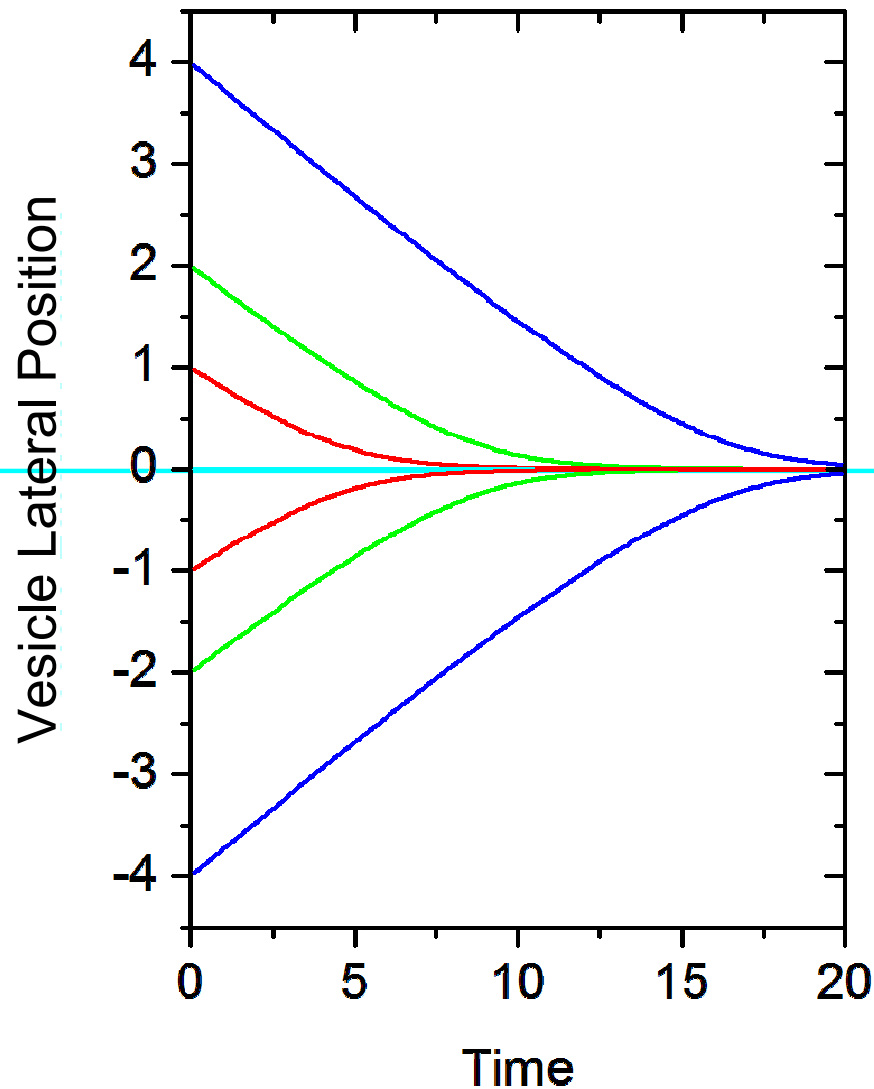
The Unbounded
Poiseuille flow

$$v_x = cy^2$$

To avoid any wall induced lift force

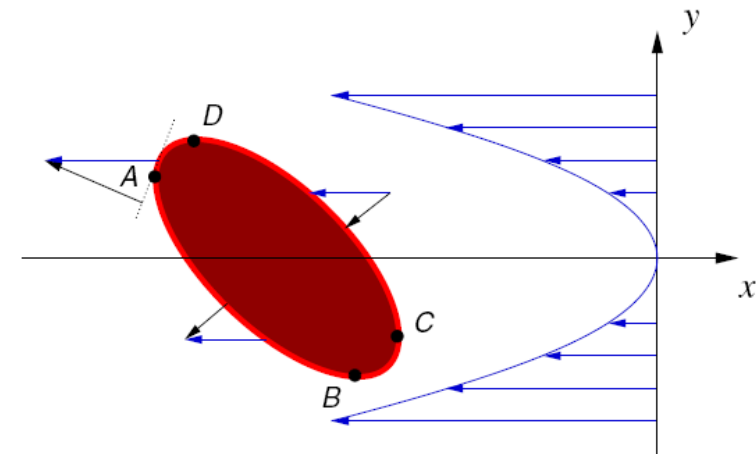
The lateral migration

The aspect ratio $R_0/w \ll 1$



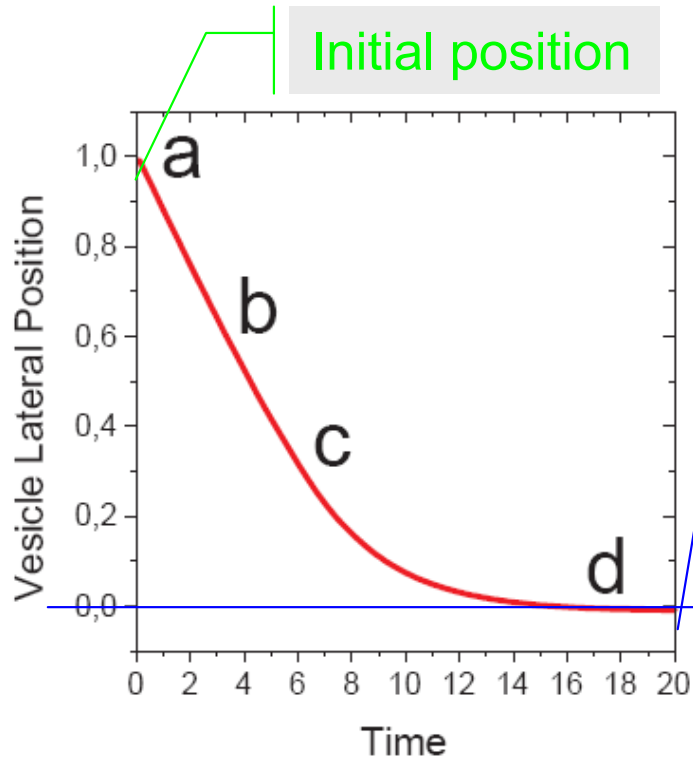
Equilibrium position

All the vesicles migrate to the Poiseuille flow centre-line

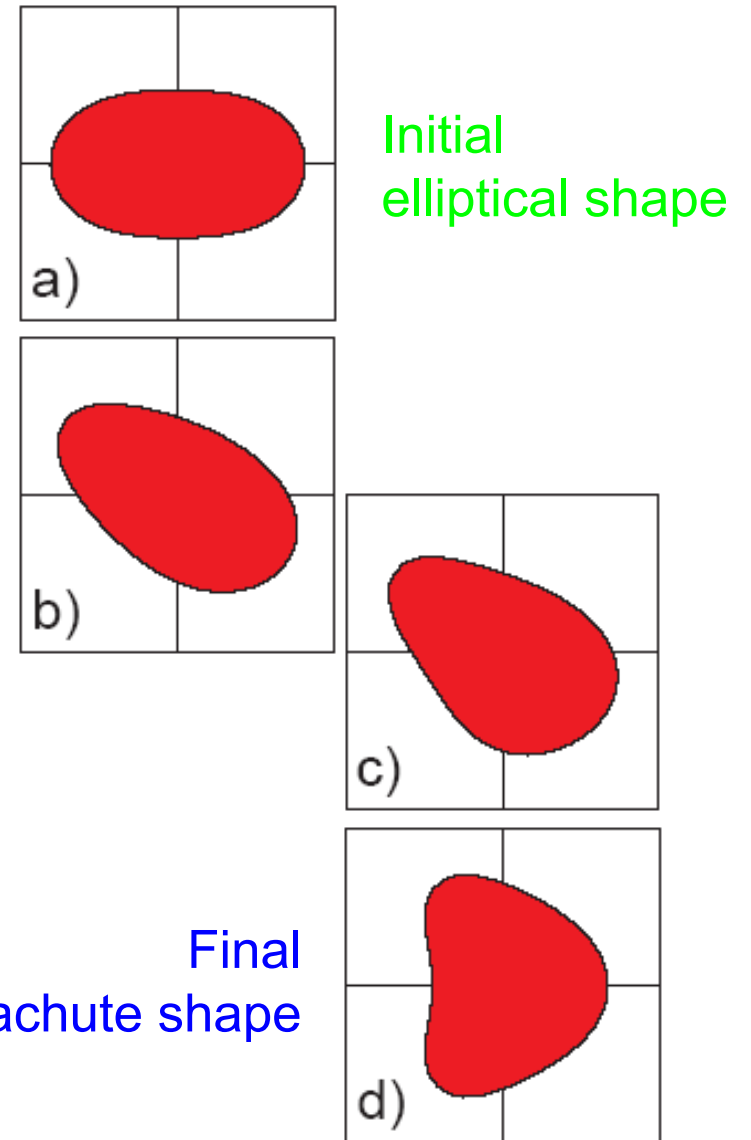


But in the absence of the viscosity contrast droplets are known to migrate away from the centre-line (L. G. Leal 1980)

Vesicle shape deformation

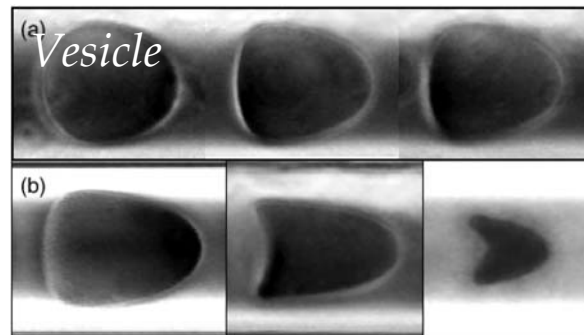
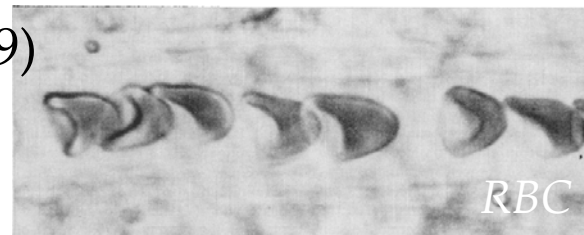


Vesicle shapes as a function of the distance from the Poiseuille flow centre-line.



R. Skalak *et al* Science (1969)

Parachute shapes obtained in capillary flows



V. Vitkova *et al* EPL (2004)

Final parachute shape

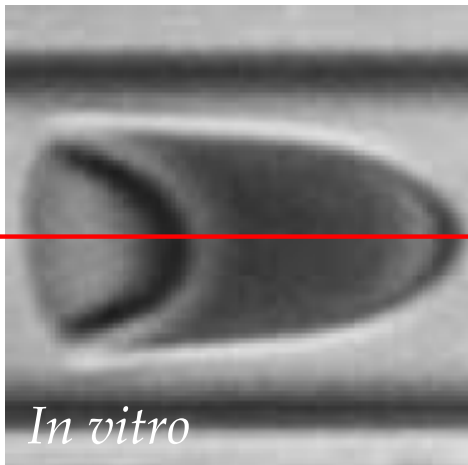
*- axisymmetric shape
- obtained without presence of any bounded walls*

*Why RBCs move ASYMMETRIC
even in a SYMMETRIC flow?*

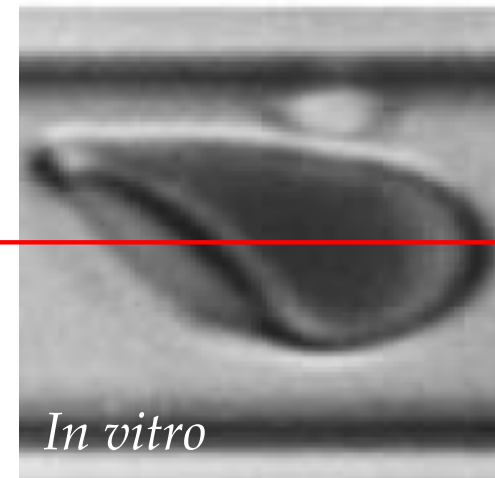
Asymmetric shapes 1

Collaboration with G. Biros

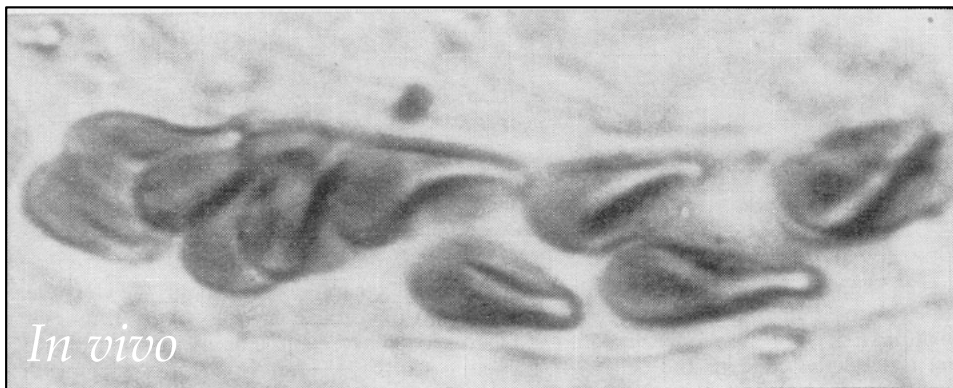
Parachute-like shape
(Axisymmetric shape)



Slipper-like shape
(Non-axisymmetric shape)



T. W. Secomb *et al* ABE (2007)



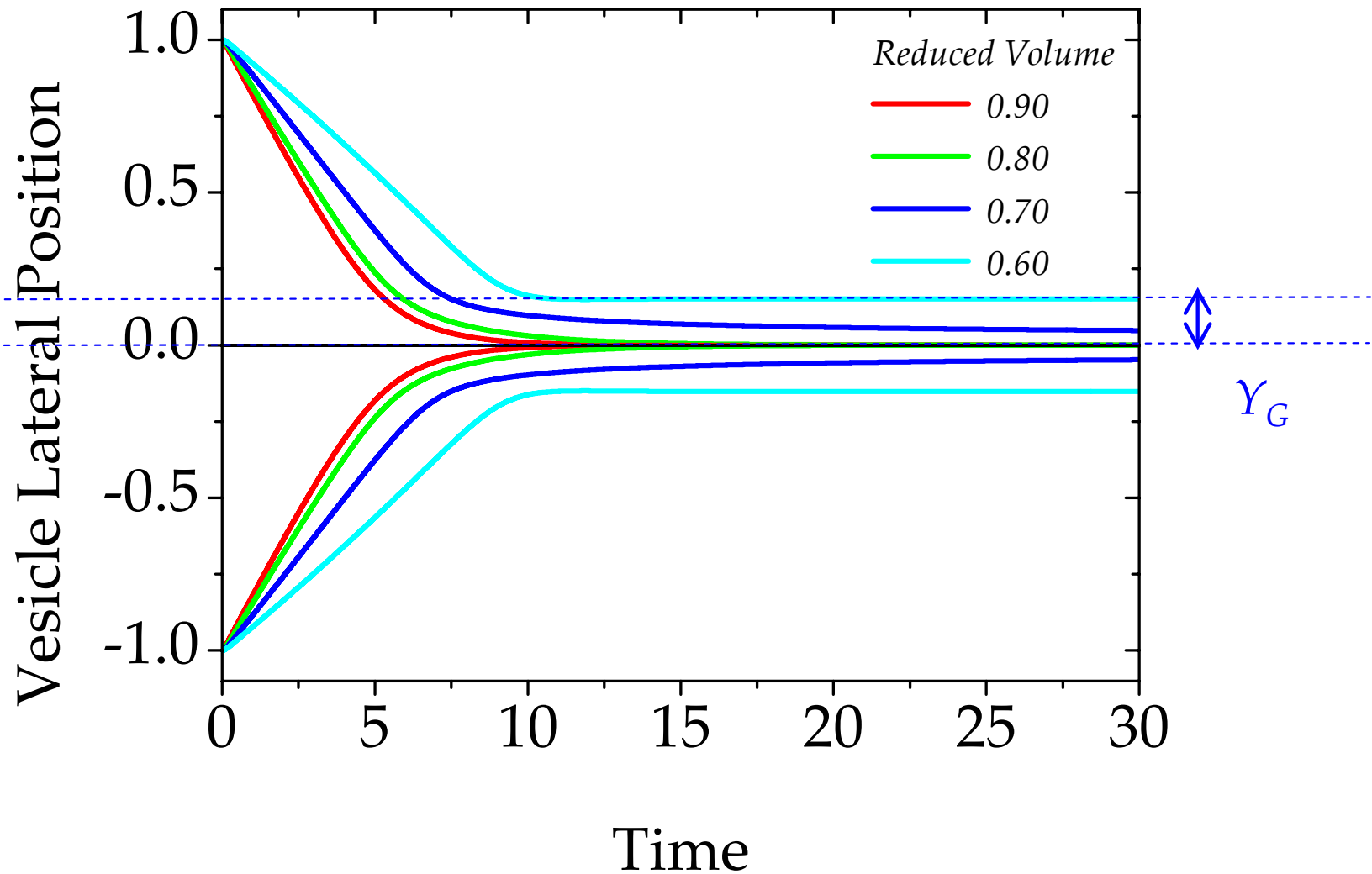
R. Skalak *et al* Science (1969)

Why RBCs move ASYMMETRIC even in a SYMMETRIC flow?

T. W. Secomb and R. Skalak MR (1982)

Librutation theory:
Confinement + Shear elasticity

Asymmetric shapes (Lateral migration)



$$\text{Reduced volume (2D)}: \nu = \frac{A}{A_c} = \frac{4\pi S}{L^2}$$

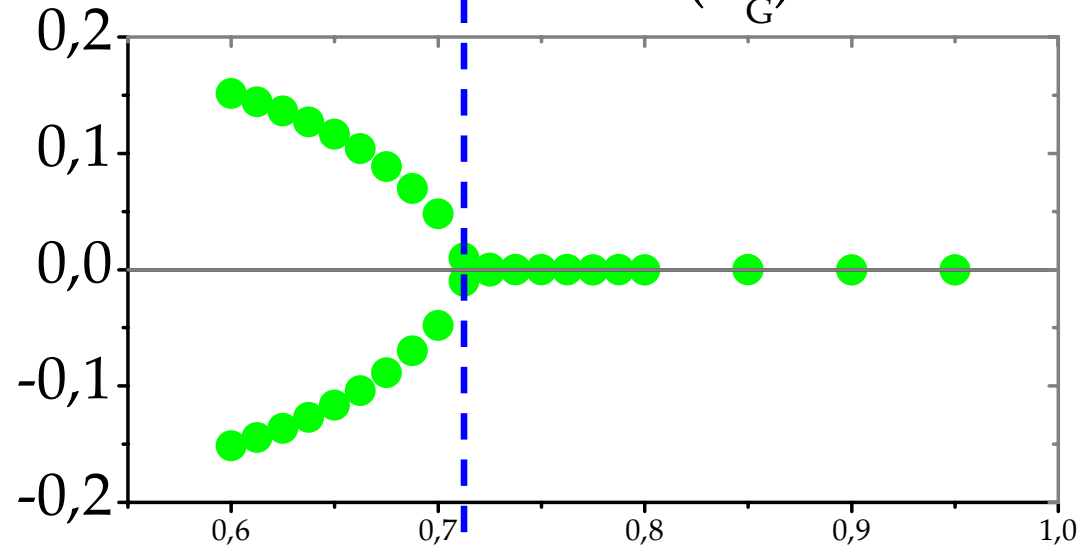
Asymmetric shapes (Bifurcation)

$$R_0 = 1, \eta = 1, \kappa = 1, w = 10, v_{\max} = 800$$

$Y_G \neq 0$

Non centered

Equilibrium Lateral Position (Y_G)



$Y_G = 0$

Centered

Reduced Volume

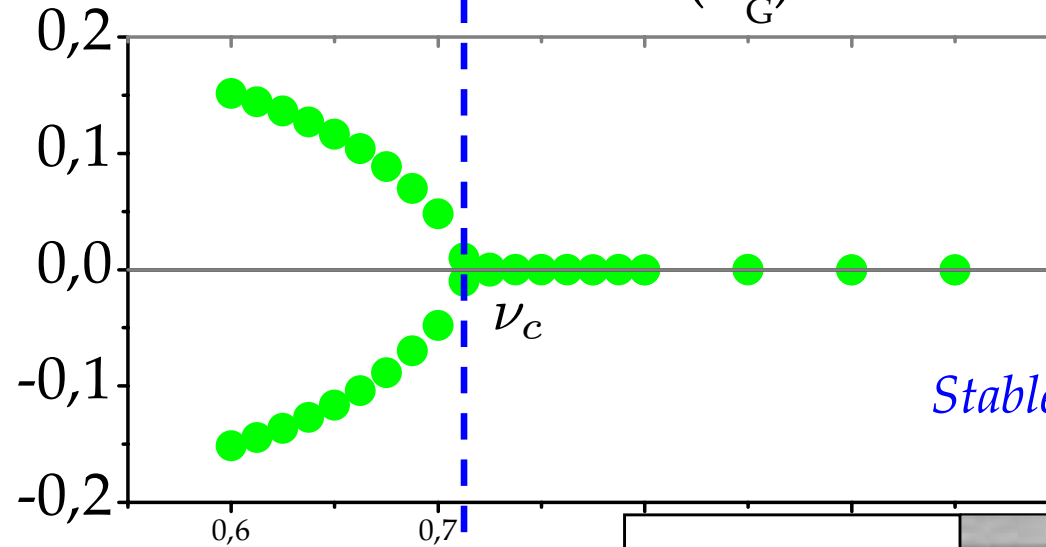
Asymmetric shapes (Bifurcation)

$$R_0 = 1, \eta = 1, \kappa = 1, w = 10, v_{\max} = 800$$

$Y_G \neq 0$

Non centered

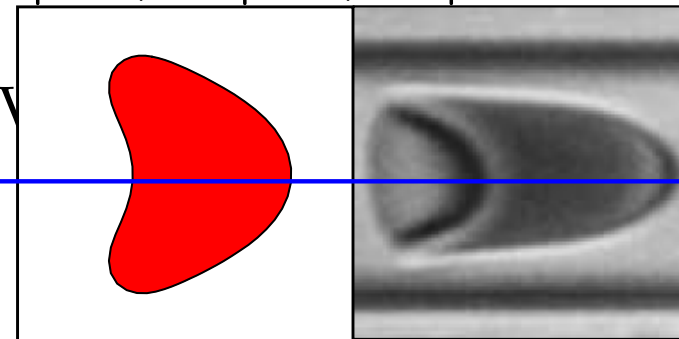
Equilibrium Lateral Position (Y_G)



$Y_G = 0$

Centered

Reduced ν



Parachute-like shape
(Axisymmetric shape)

Asymmetric shapes (Bifurcation)

$$R_0 = 1, \eta = 1, \kappa = 1, w = 10, v_{\max} = 800$$

Equilibrium Lateral Position (Y_G)

$Y_G \neq 0$

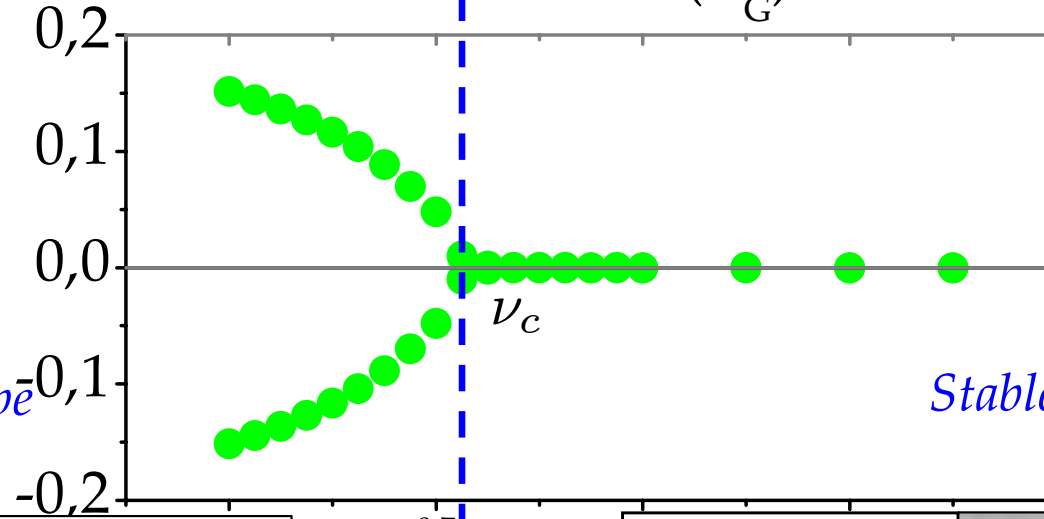
Non centered

Unstable parachute-shape
Stable slipper shape

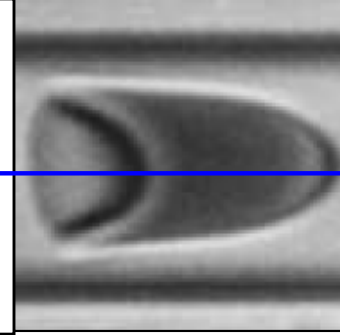
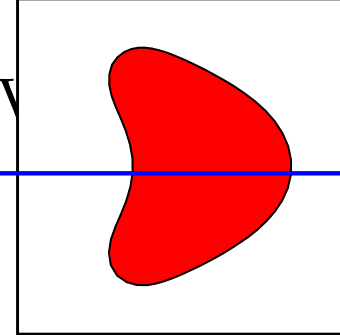
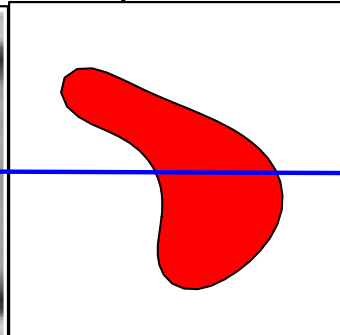
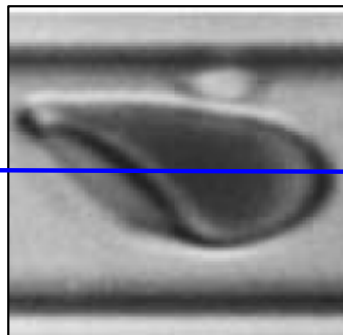
$Y_G = 0$

Centered

Stable parachute-shape



Reduced v



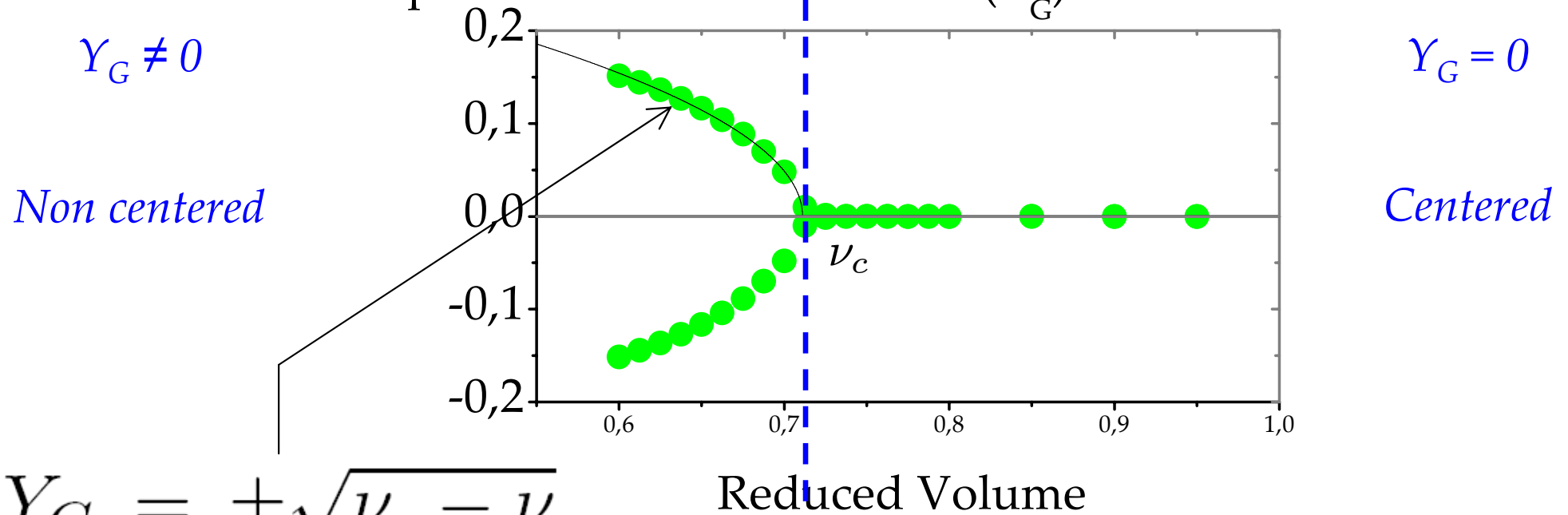
Slipper-like shape
(Non-axisymmetric shape)

Parachute-like shape
(Axisymmetric shape)

Asymmetric shapes (Bifurcation)

$$R_0 = 1, \eta = 1, \kappa = 1, w = 10, v_{\max} = 800$$

Equilibrium Lateral Position (Y_G)

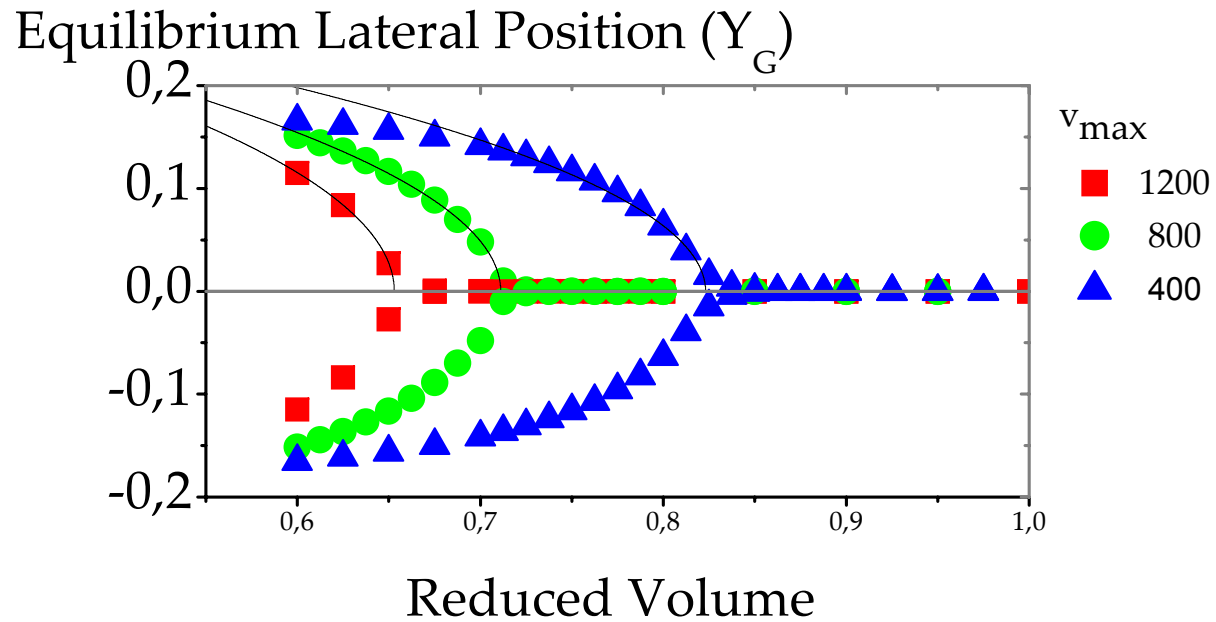


$$Y_G = \pm \sqrt{\nu_c - \nu}$$

Supercritical bifurcation

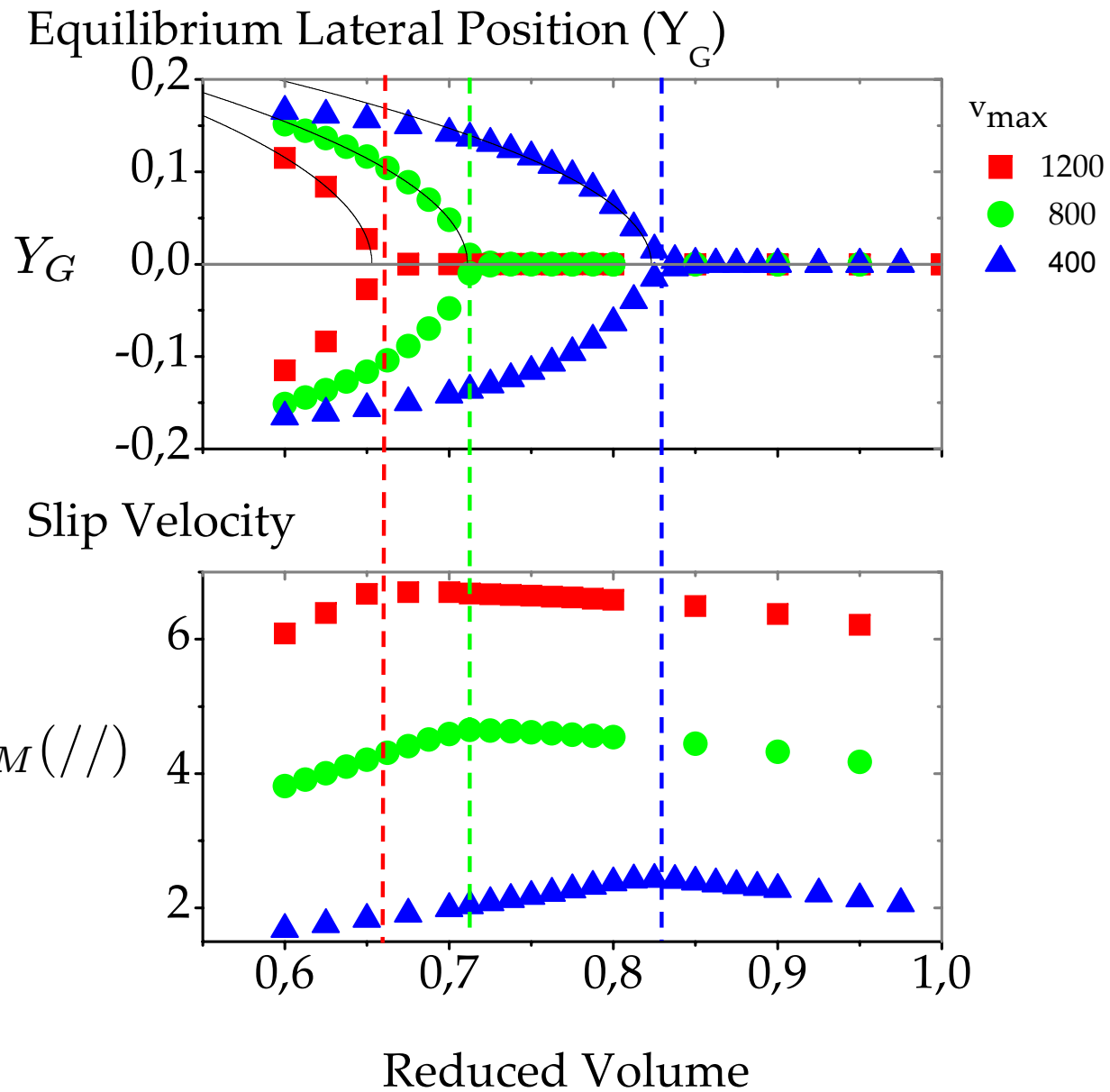
Asymmetric shapes (Bifurcation)

$$R_0 = 1, \eta = 1, \kappa = 1, w = 10$$

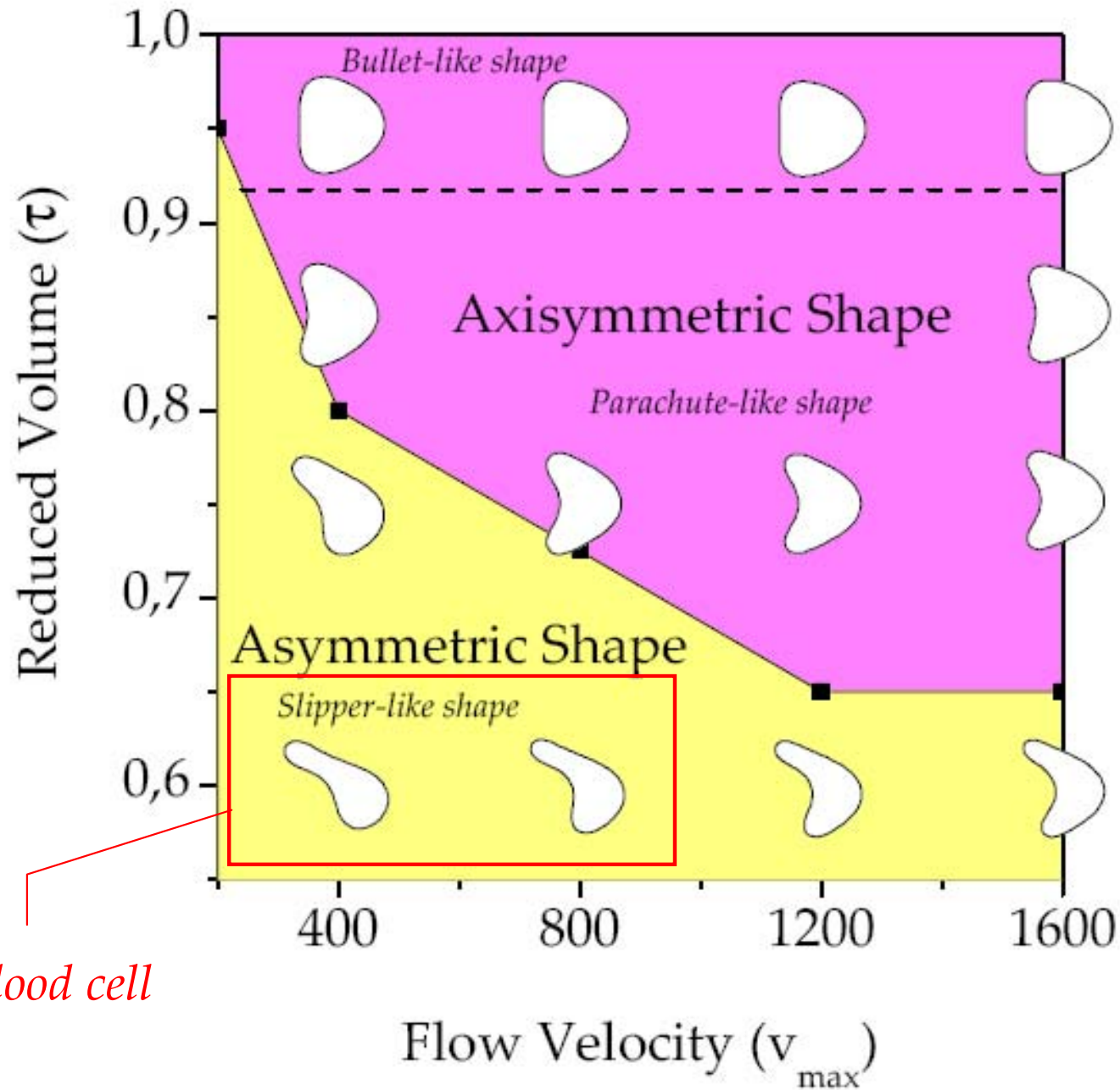


Asymmetric shapes (Slip velocity)

$$R_0 = 1, \eta = 1, \kappa = 1, w = 10$$



Asymmetric shapes (Phase-diagram)



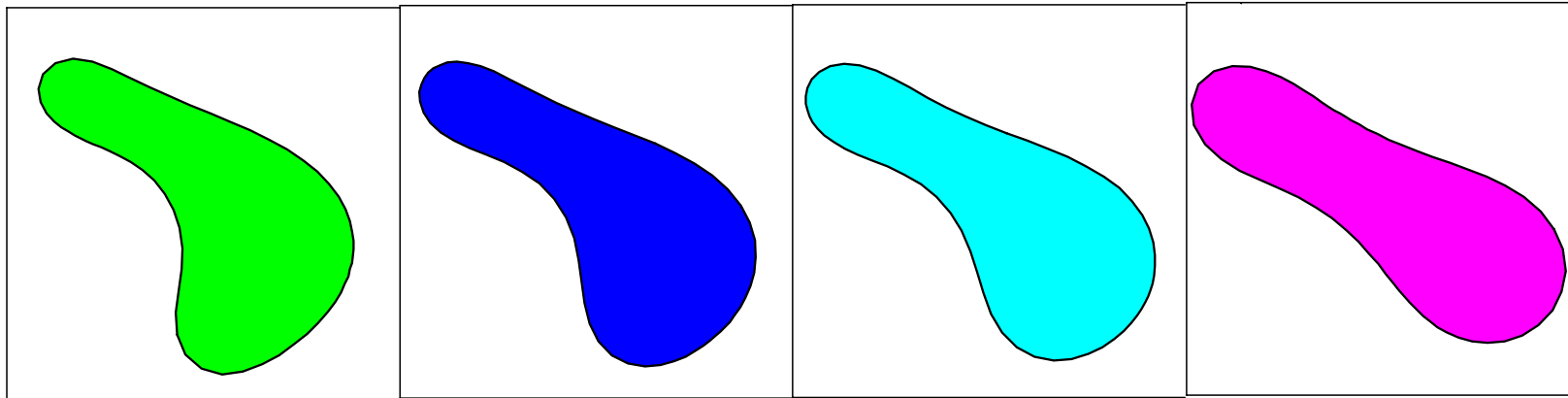
Red blood cell

Asymmetric shapes (Effect of rigidity)

Increasing membrane rigidity



$\nu = 0.6$



$\kappa = 1$

$\kappa = 1.5$

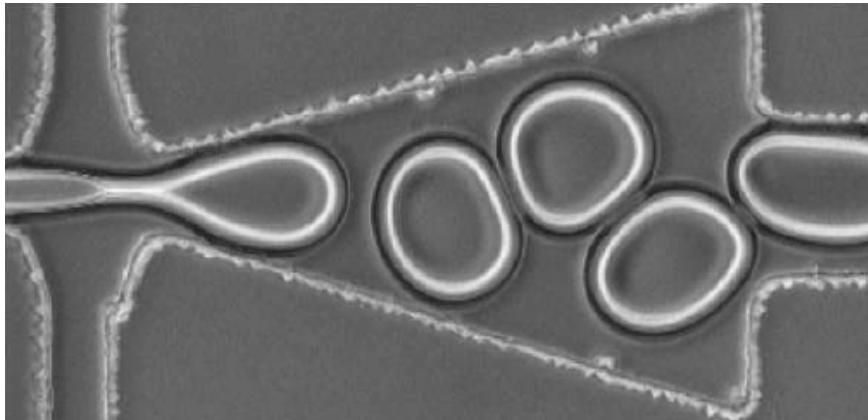
$\kappa = 2$

$\kappa = 5$

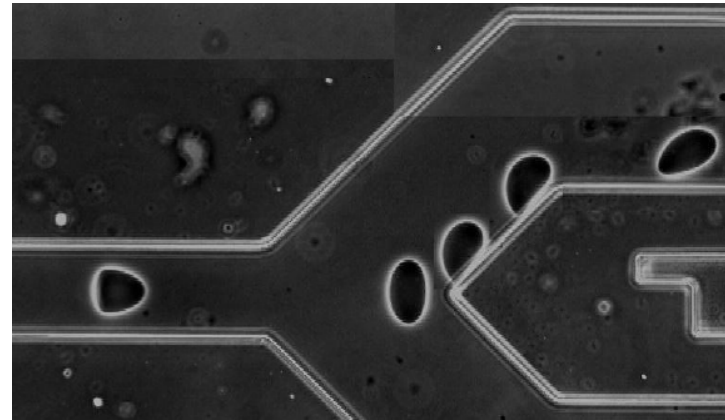
Vesicle dynamics in confined
geometries and in
micro-fluidic devices

The main goal

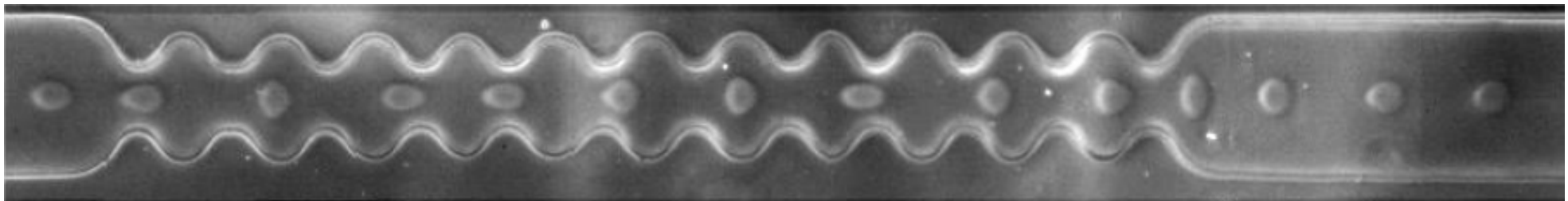
- Simulation of **vesicles** (deformable particles) flowing in **micro-fluidic devices** (complex geometries)



A microfluidic device used to produce monodisperse vesicles (V. Vitkova).



A Y-junction used to study the lateral migration of vesicles in micro-channels (G. Coupier).

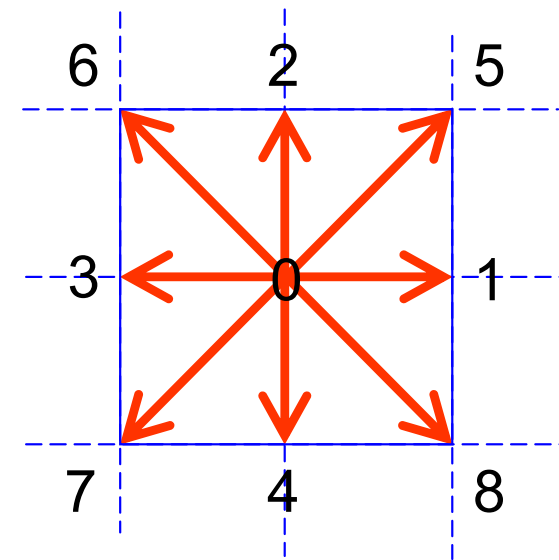
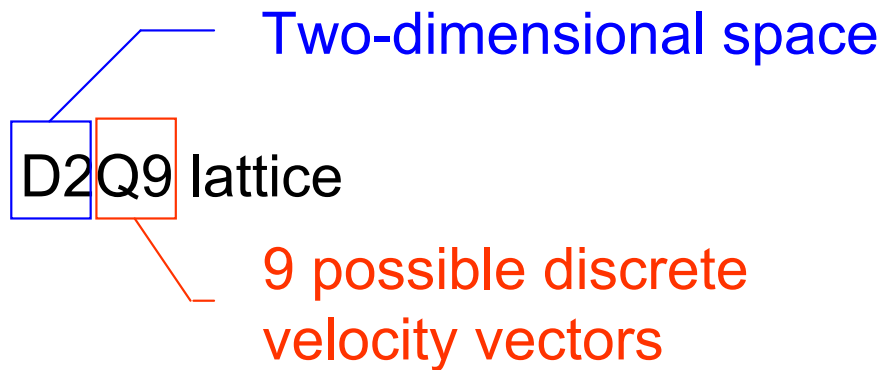


A microfluidic device used to measure the mechanical properties of vesicles (H. A. Stone).

- The main central quantity:

$$f_i(\mathbf{r}, t)$$

- In the LBMs not only the positions are discretized but also velocities:



- The evolution in time of $f_i(\mathbf{r}, t)$:

The collision operator

$$f_i^{\text{new}}(\mathbf{r} + \mathbf{c}_i \Delta t, t + \Delta t) - f_i^{\text{old}}(\mathbf{r}, t) = \Delta t (\Omega_i + F_i)$$

Free streaming

An external applied force

Fluid flow: *Lattice-Boltzmann 2*

- The Bhatnagar-Gross-Krook (BGK) approximation:

$$\Omega_i = -\frac{1}{\tau} \left(f_i^{\text{old}}(\mathbf{r}, t) - f_i^{\text{eq}}(\mathbf{r}, t) \right)$$

$\nu = \frac{2\tau - 1}{6}$ The kinematic viscosity

$$f_i^{\text{eq}}(\mathbf{r}, t) = w_i \rho(\mathbf{r}, t) \left[c_1 + c_2(\mathbf{c}_i \cdot \mathbf{u}) + c_2(\mathbf{c}_i \cdot \mathbf{u})^2 + c_4(\mathbf{u} \cdot \mathbf{u}) \right]$$

The equilibrium distribution

- Fluid flow:

$$\mathbf{u}(\mathbf{r}, t) = \frac{1}{\rho(\mathbf{r}, t)} \sum_{i=0}^8 f_i(\mathbf{r}, t) \mathbf{c}_i$$

Velocity

$$\rho(\mathbf{r}, t) = \sum_{i=0}^8 f_i(\mathbf{r}, t)$$

Density

$$p(\mathbf{r}, t) = \rho(\mathbf{r}, t) c_S^2$$

Pressure

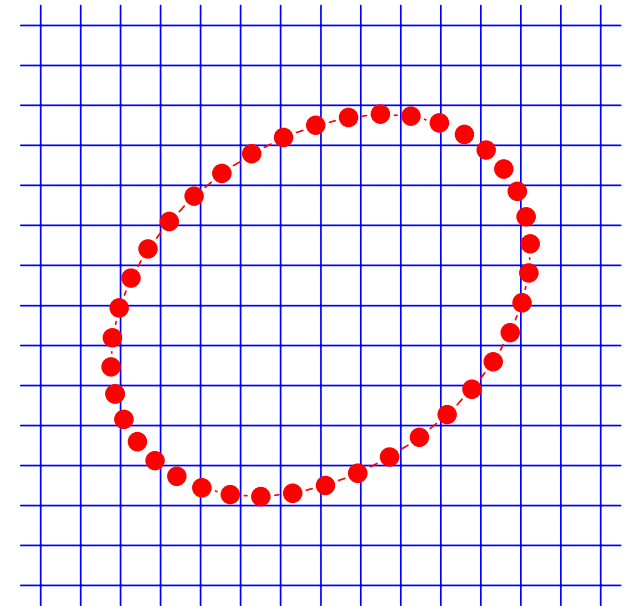
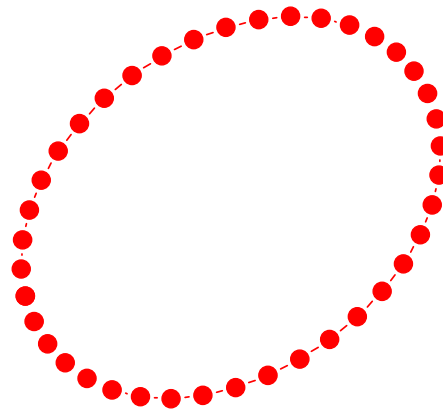
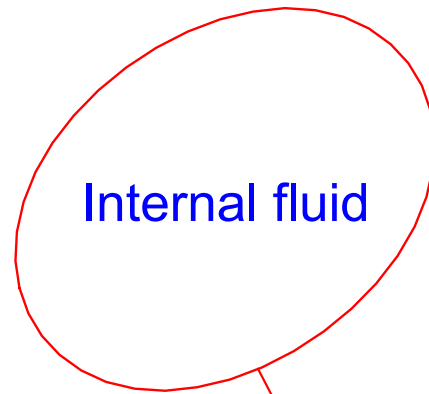
Fluid-vesicle coupling 1

Immersed boundary method

Moving Lagrangian mesh
(vesicle)

Fixed Eulerian mesh
(fluid)

External fluid

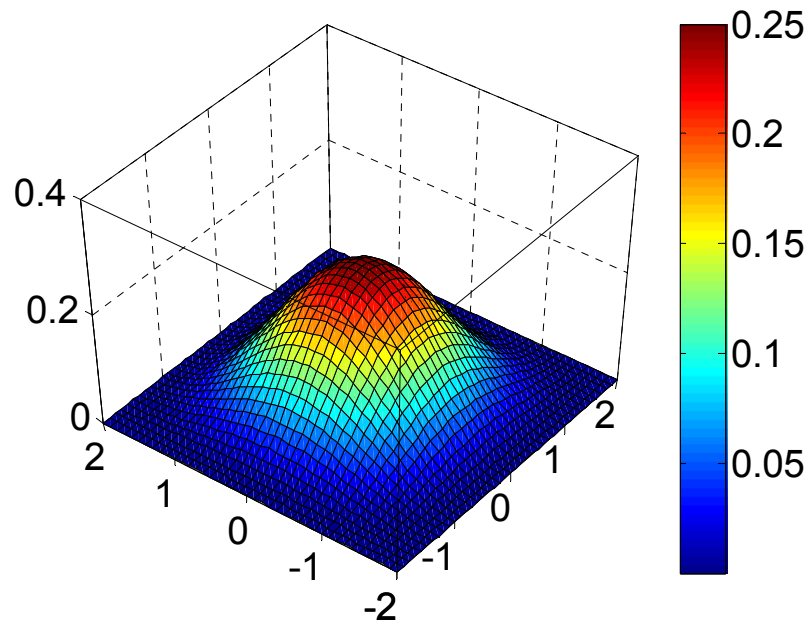


Membrane

Neighboring nodes are
inter-connected by an
elastic spring

Fluid flow computed using
the lattice-Boltzmann
method

Fluid-vesicle coupling 2

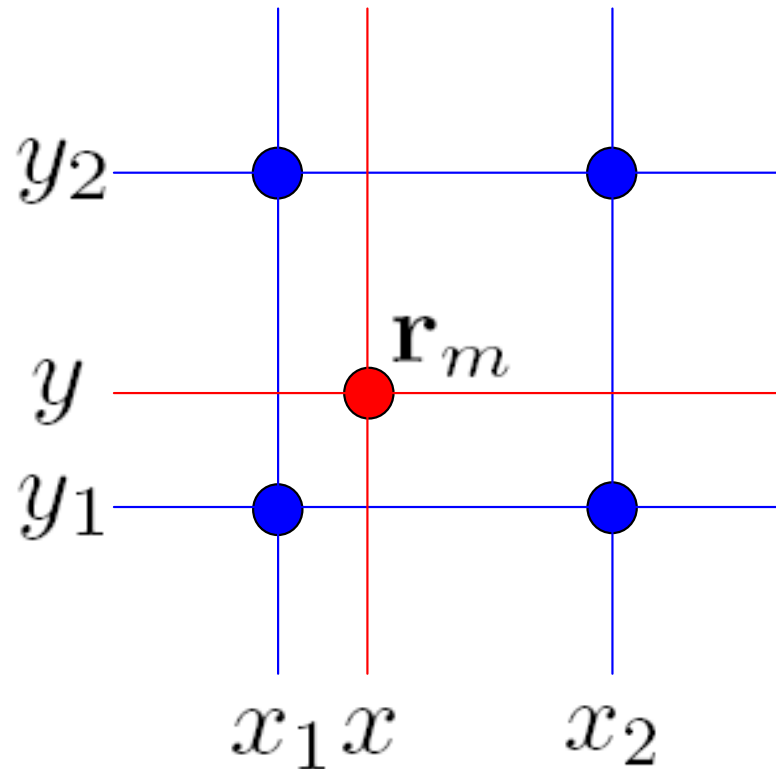


$$\Delta(\mathbf{x}) = \begin{cases} \frac{1}{16l_s^2} \left(1 + \cos \frac{\pi x}{2l_s}\right) \left(1 + \cos \frac{\pi y}{2l_s}\right) \\ 0 \end{cases}$$

for $|x| \leq 2l_s$ and $|y| \leq 2l_s$,
otherwise,

a discrete Dirac delta function

Fluid-vesicle coupling 3



- Membrane node
- Fluid node

Fluid flow \rightarrow Membrane dynamics

$$\mathbf{v}(\mathbf{r}_m) = \sum_f \Delta(\mathbf{r}_f - \mathbf{r}_m) \mathbf{u}(\mathbf{r}_f)$$

Advection (Euler scheme):

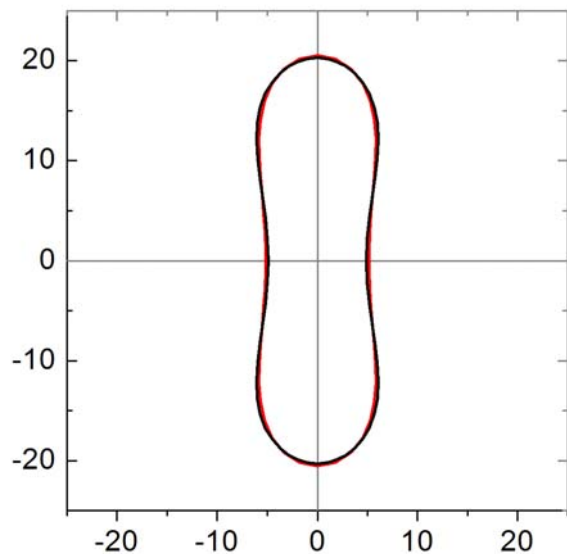
$$\mathbf{r}(t + dt) = \mathbf{v}(\mathbf{r}, t) dt + \mathbf{r}(t)$$

Membrane dynamics \rightarrow Fluid flow

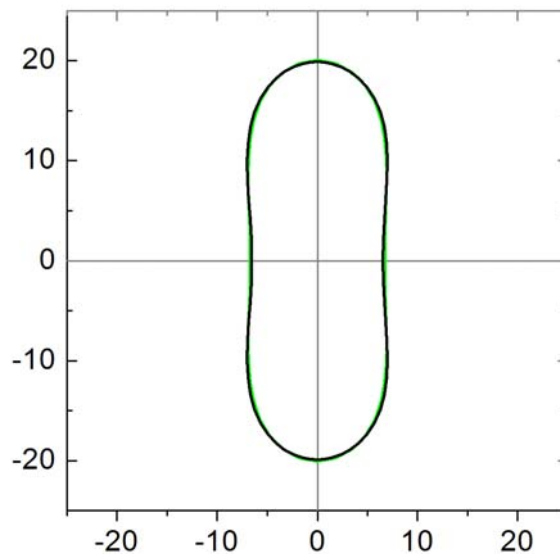
$$\mathbf{F}(\mathbf{r}_f) = \sum_m \mathbf{f}(\mathbf{r}_m) \delta(\mathbf{r}_f - \mathbf{r}_m)$$

Computed equilibrium shapes

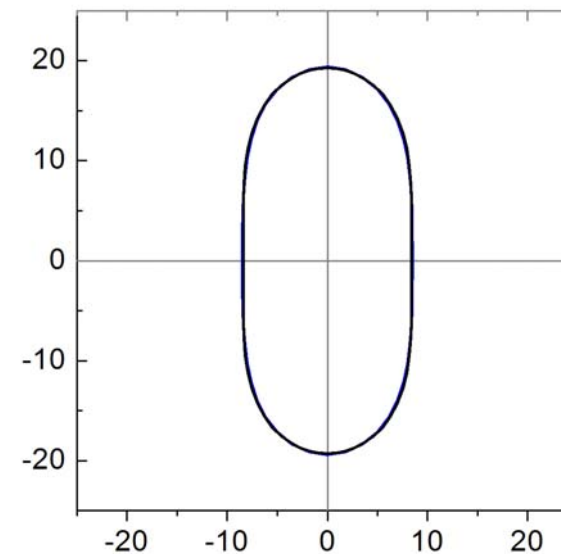
Reduced Volume = 0.60



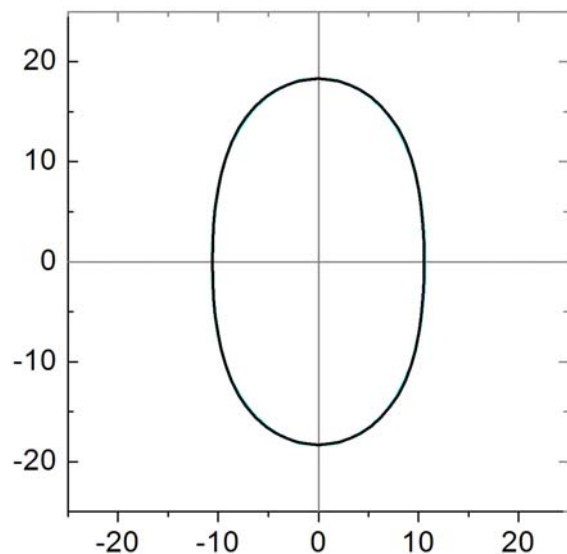
Reduced Volume = 0.70



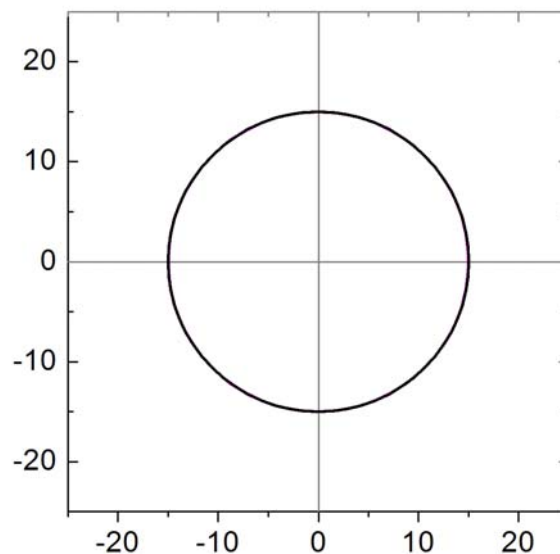
Reduced Volume = 0.80



Reduced Volume = 0.90



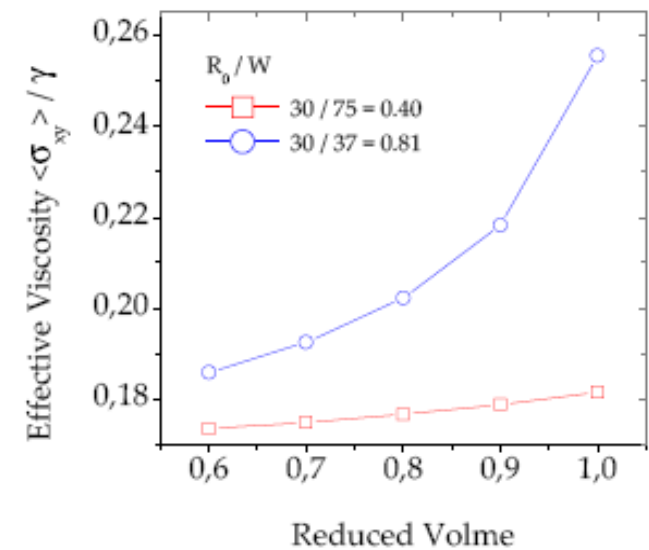
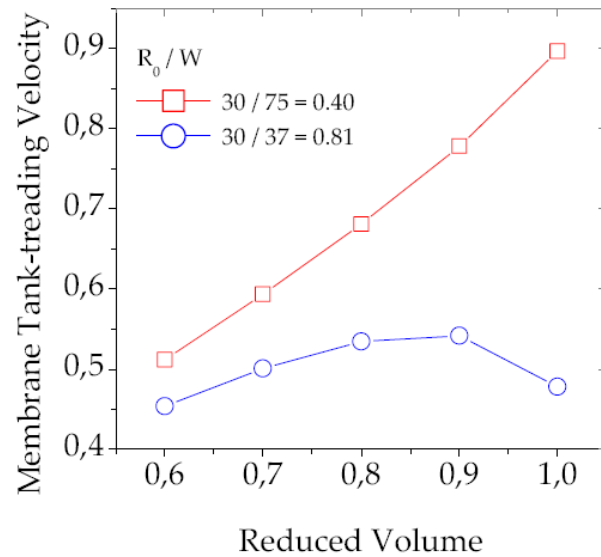
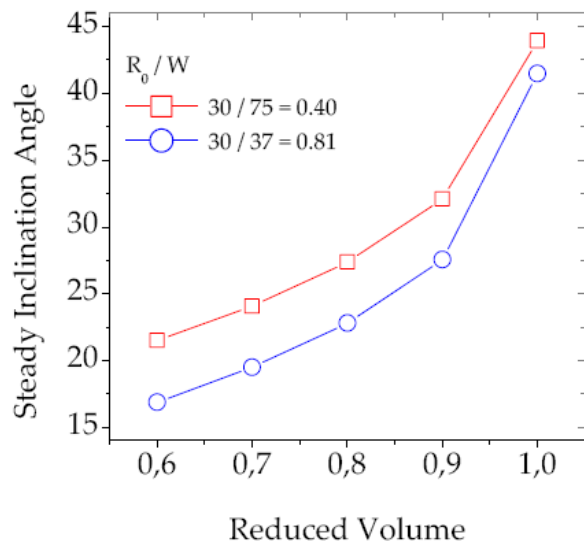
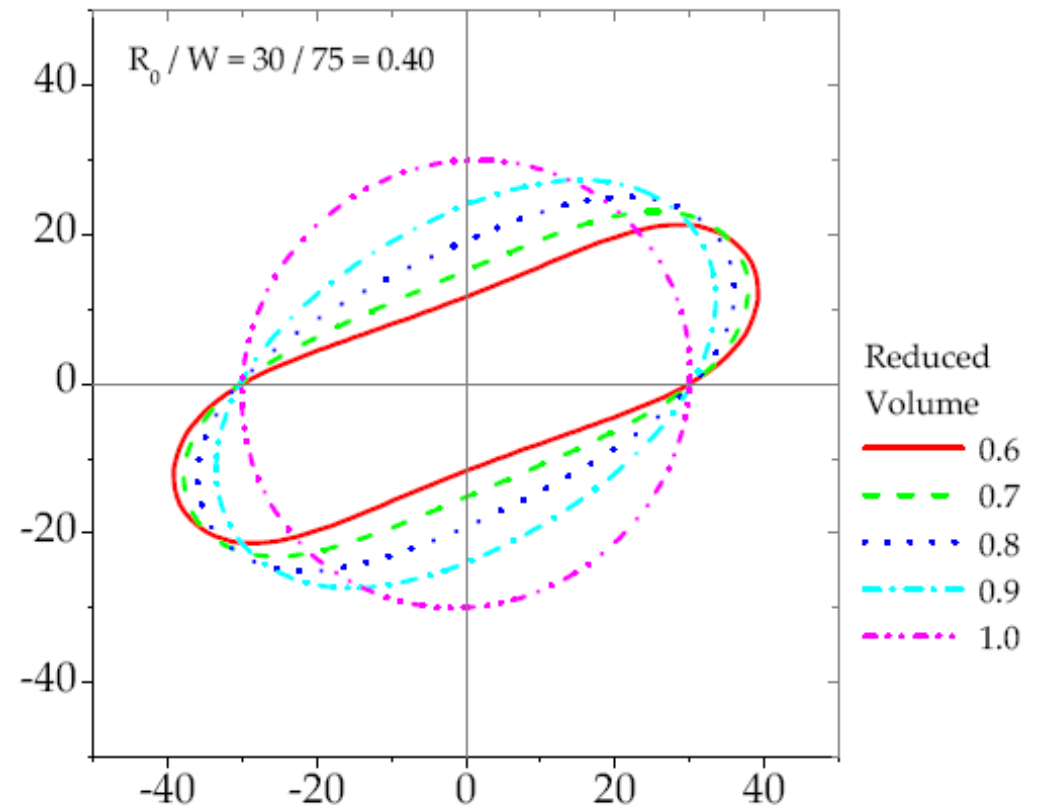
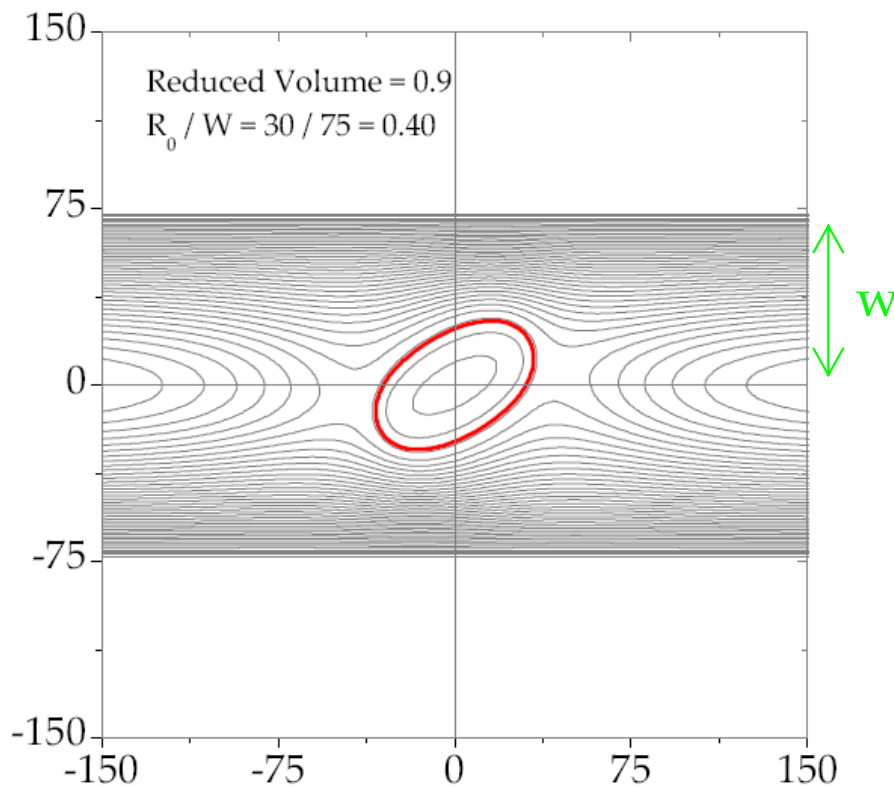
Reduced Volume = 1.00



Solid black lines are the equilibrium shapes computed by the boundray integral method.

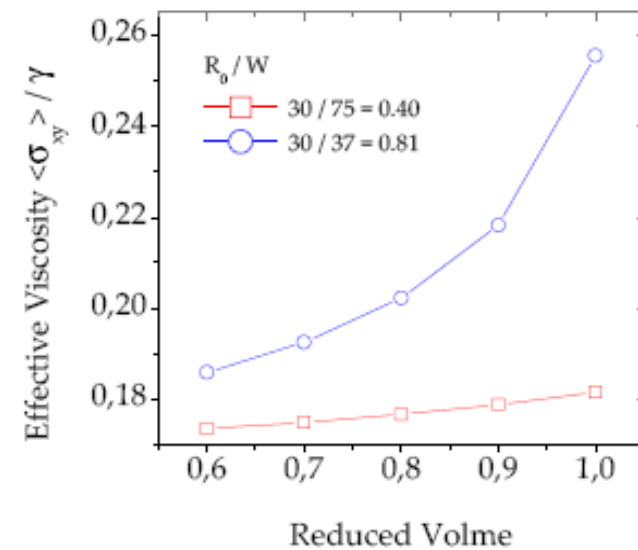
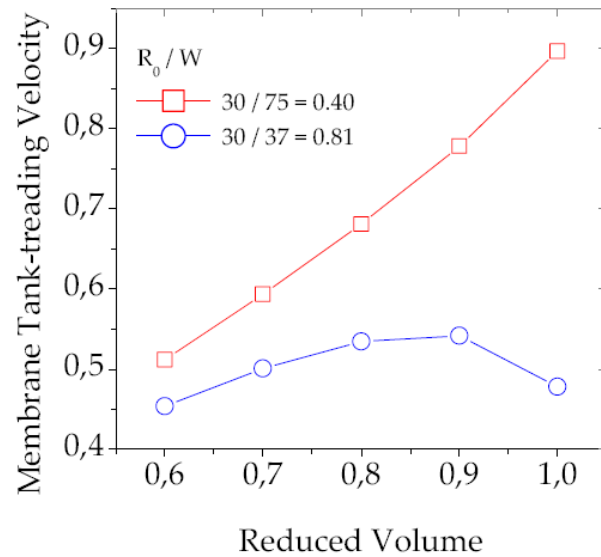
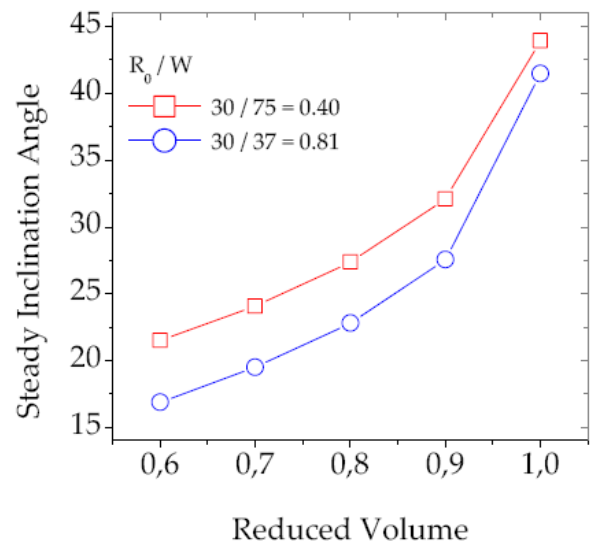
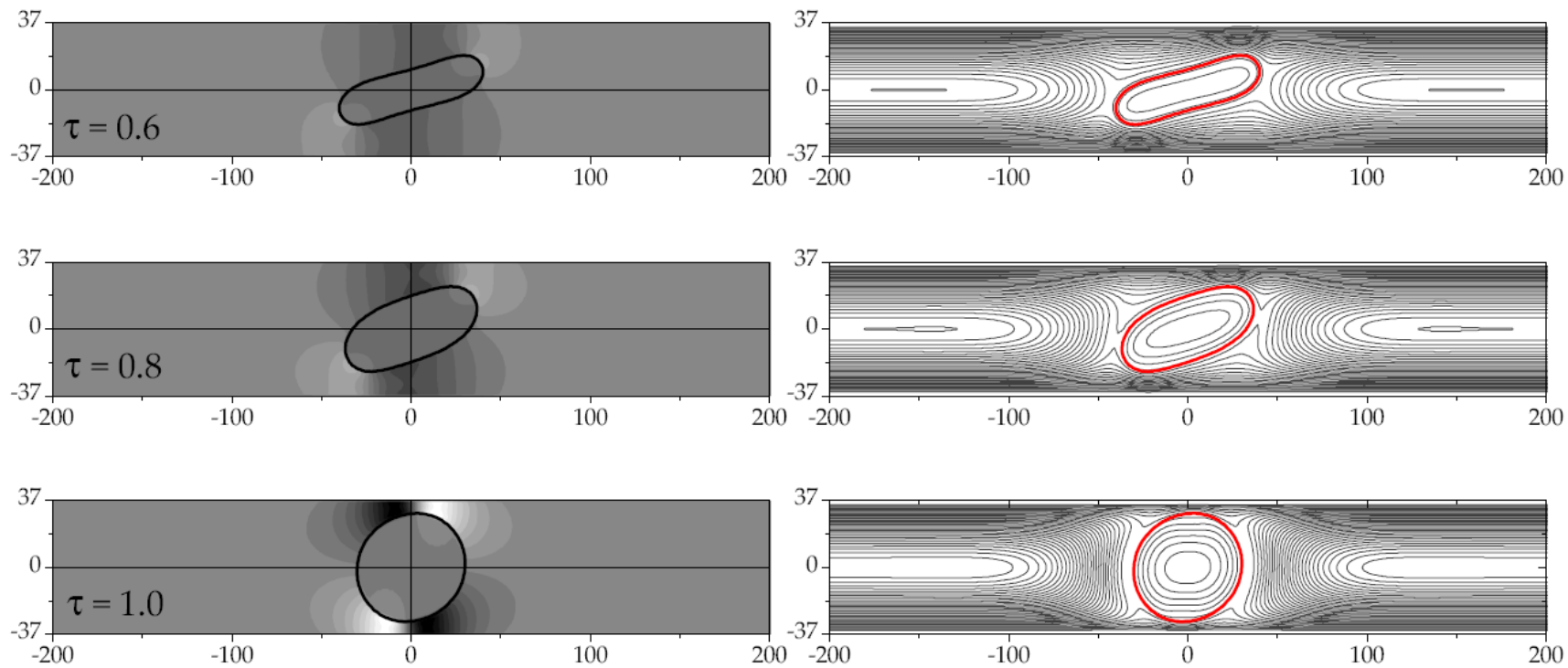
The same equilibrium shapes are obtained by the two Methods!

Tank-treading under shear flow



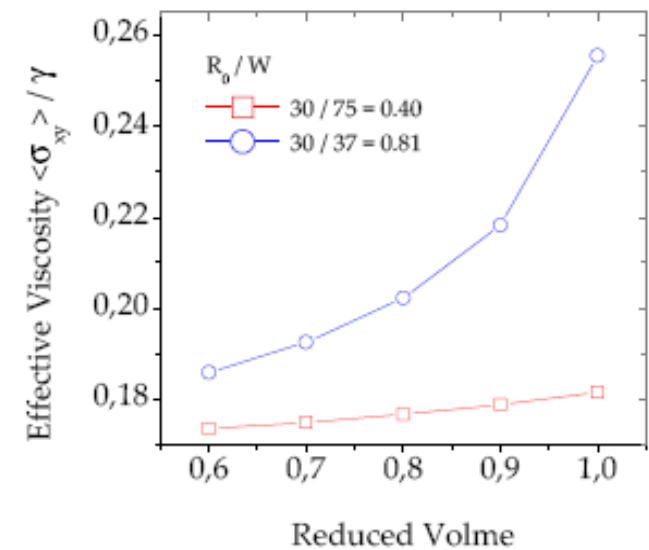
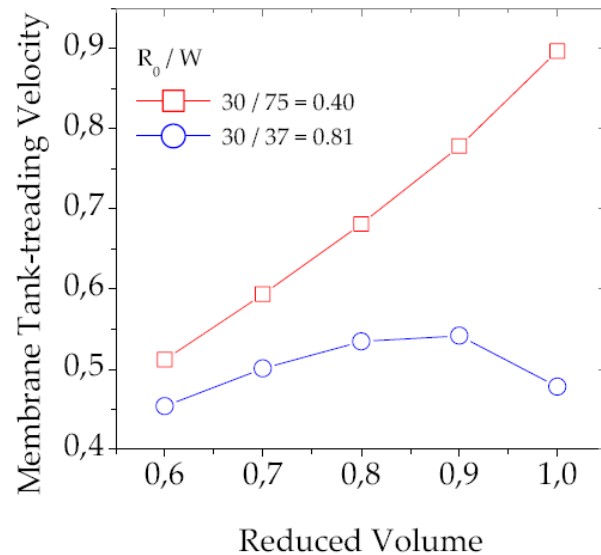
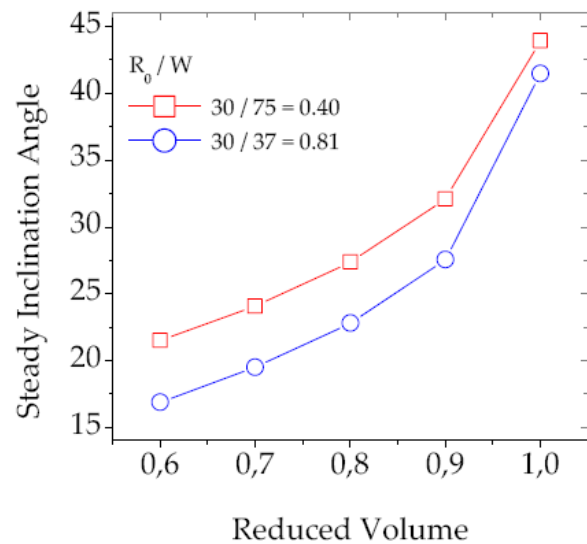
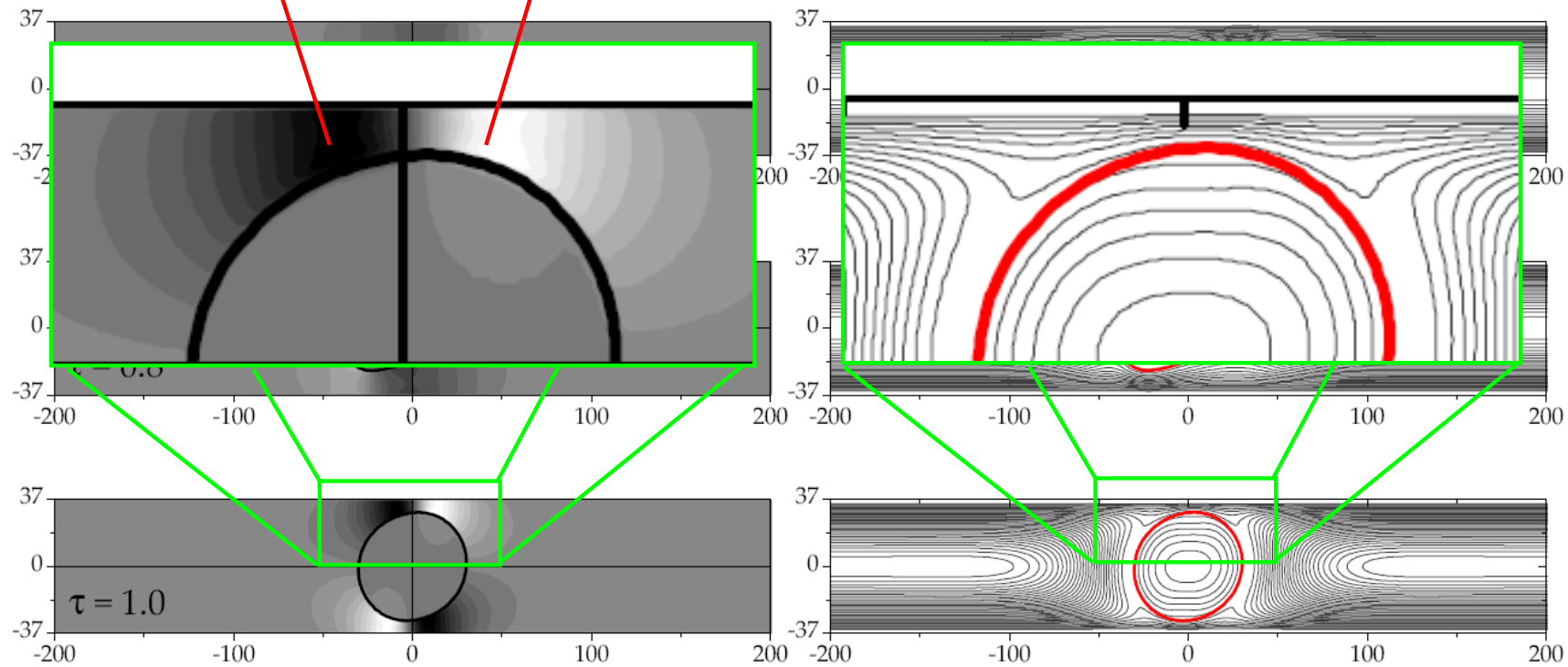
Tank-treading under shear flow

$$R_0/w = 30/37 = 0.81$$

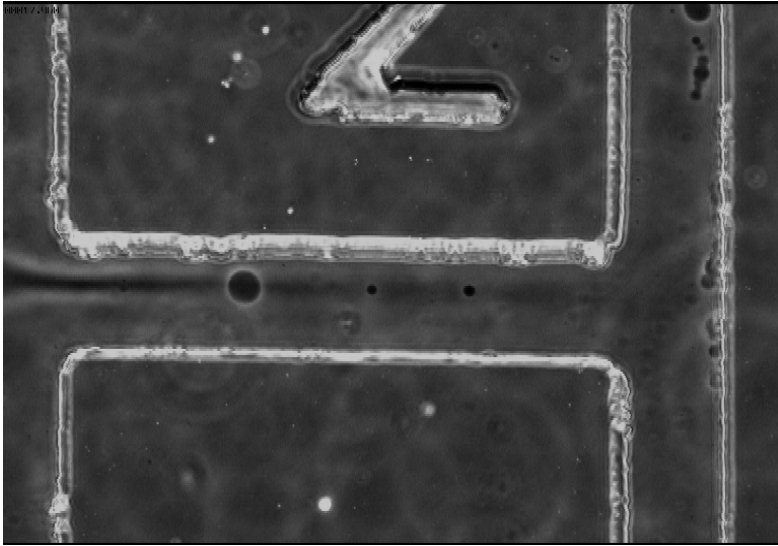


Tank-treading under shear flow

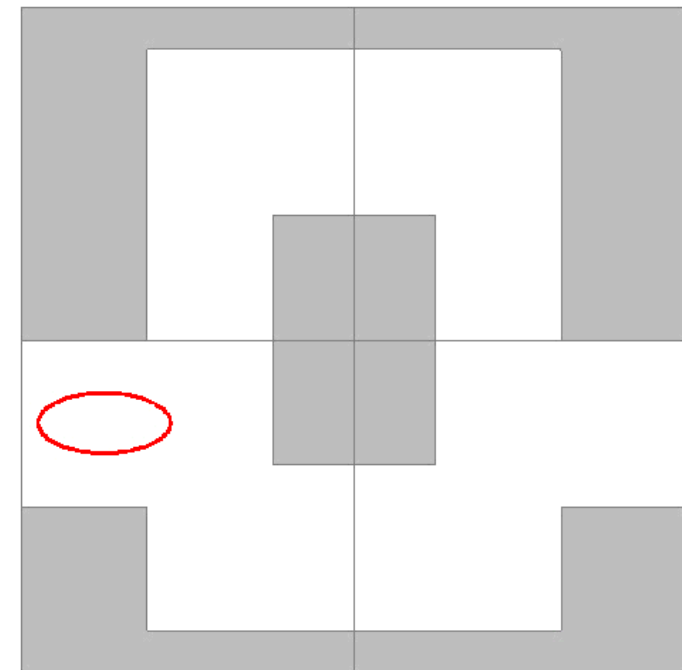
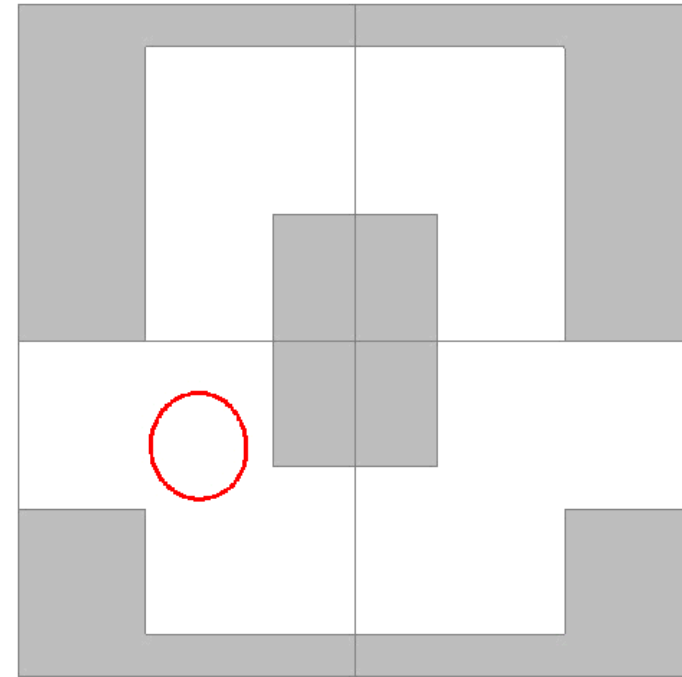
Higher pressure Lower pressure



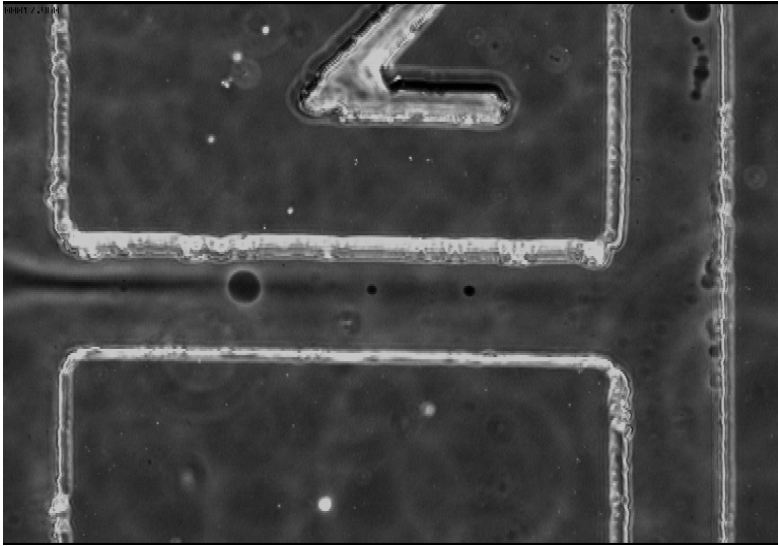
Double-T junction



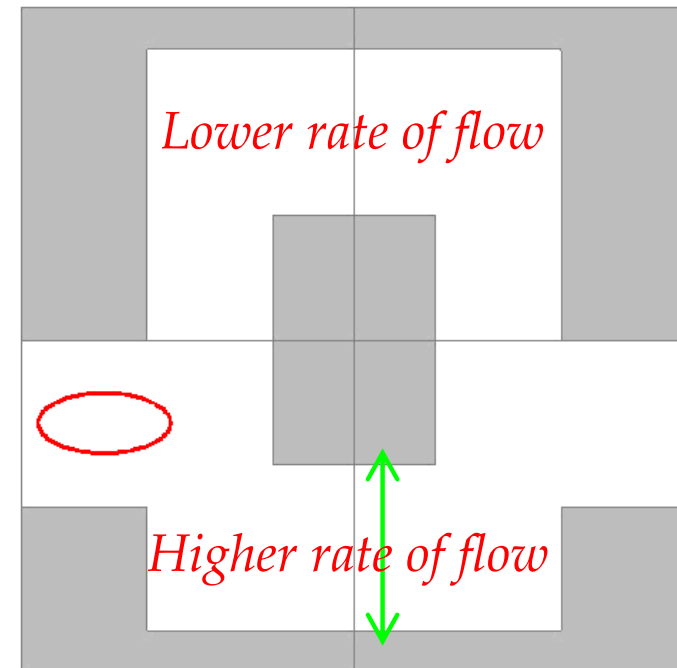
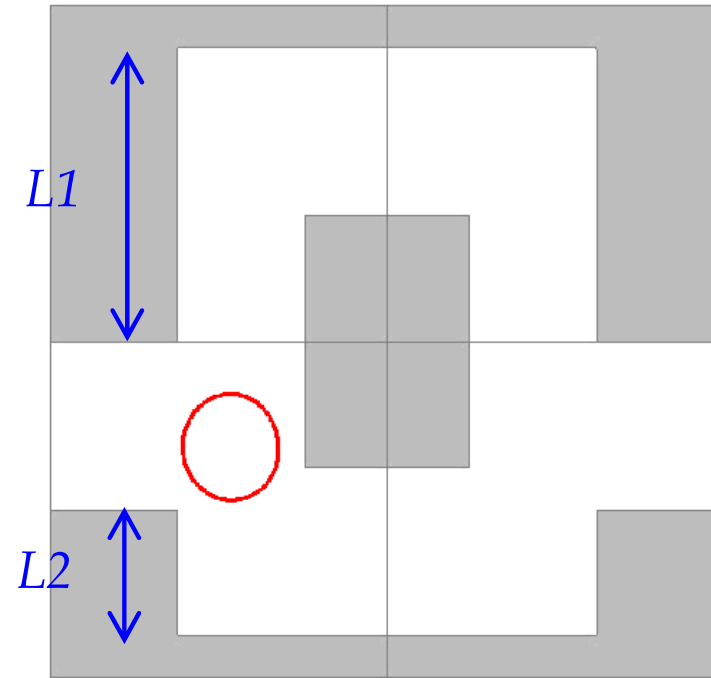
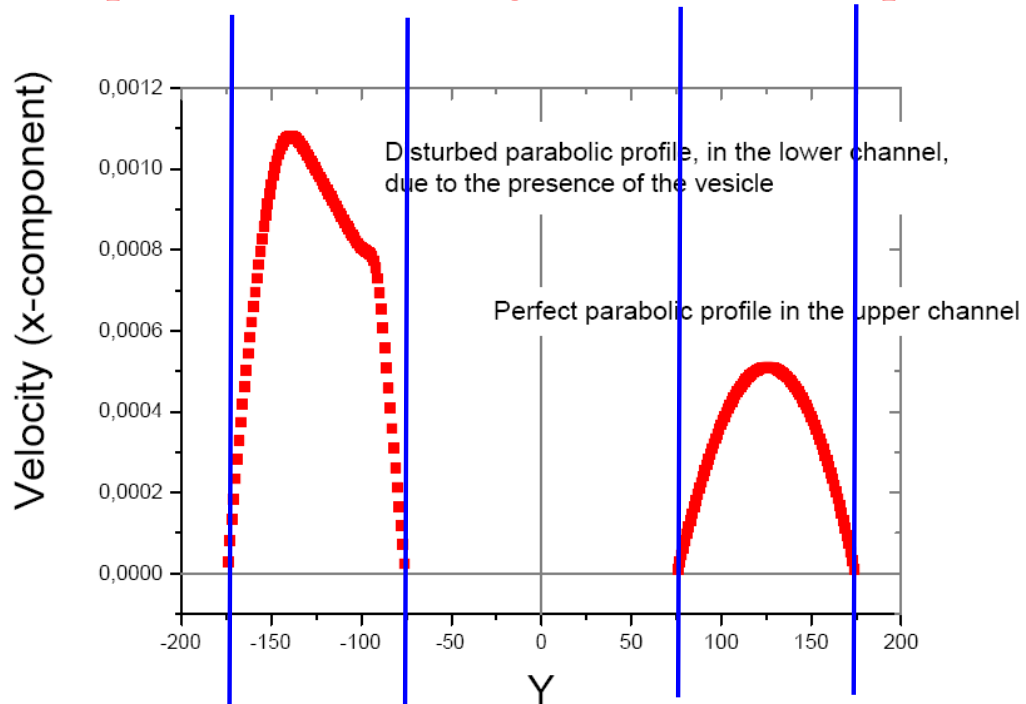
Experiment (T. Podgorski & G. Coupier)



Double-T junction

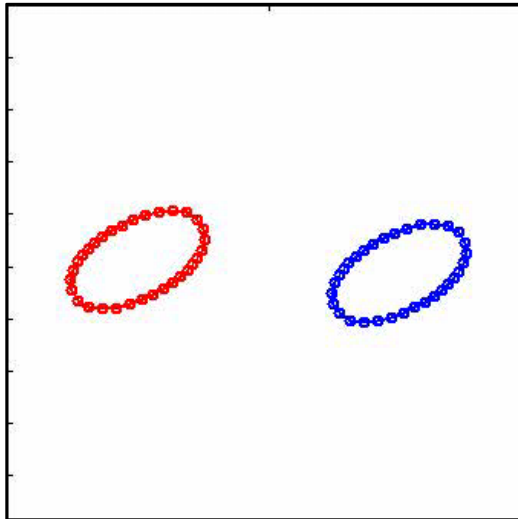


Experiment (T. Podgorski & G. Coupier)



Two interacting vesicles under shear flow

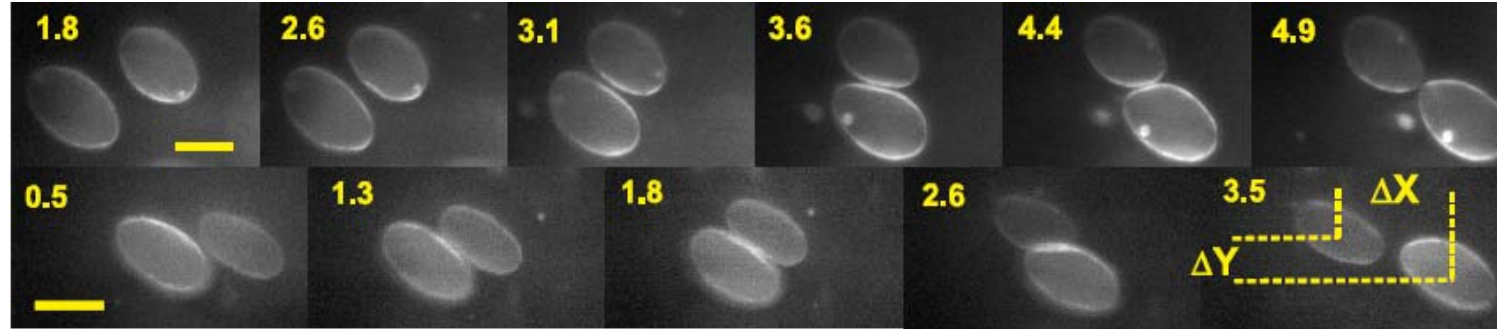
Two interacting vesicles (Reduced volume)



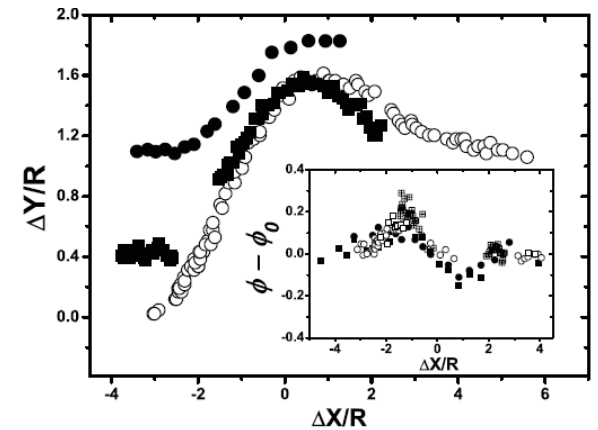
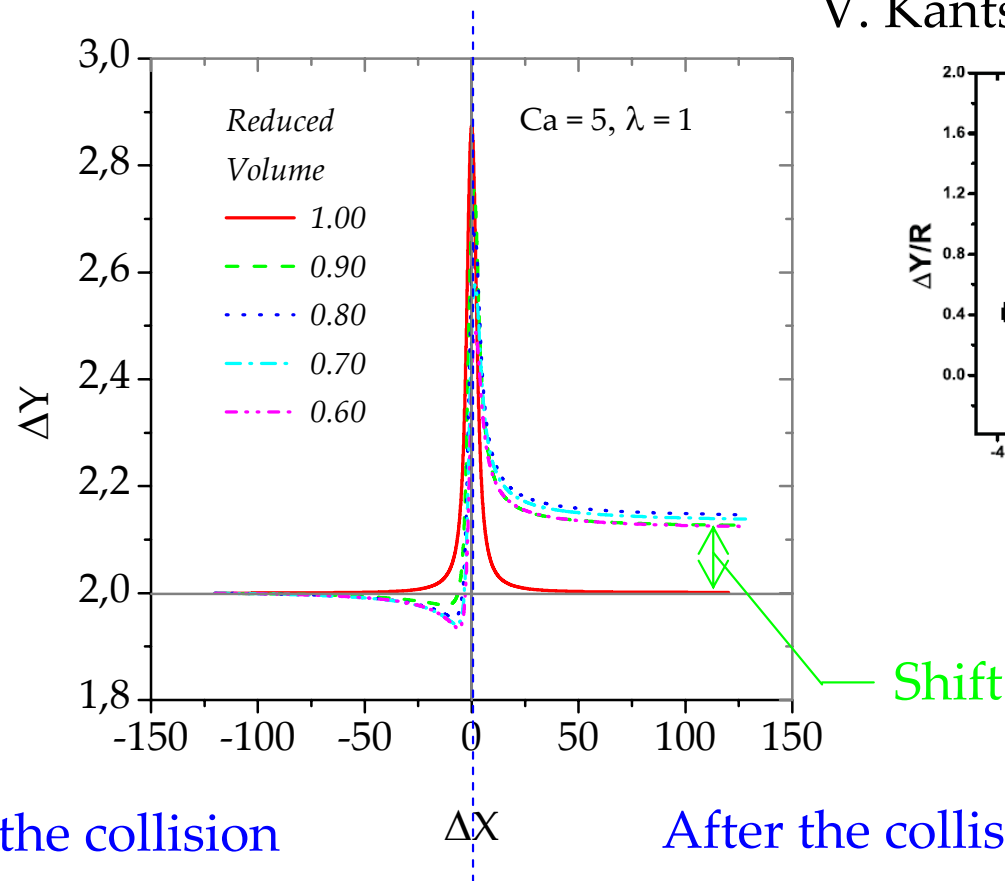
BIM Simulation

Two vesicles with different reduced volumes

Experiment



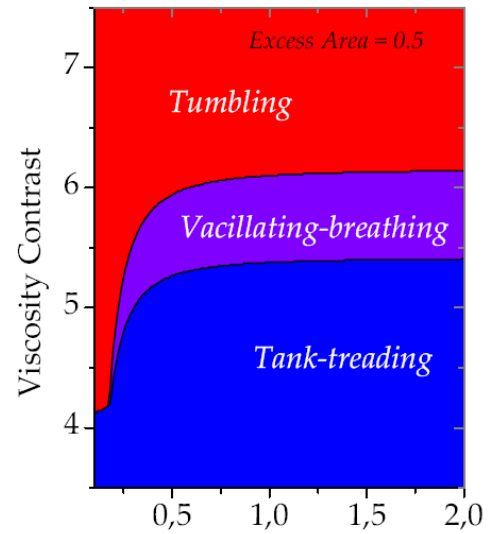
V. Kantsler *et al* EPL (2008)



Experiment

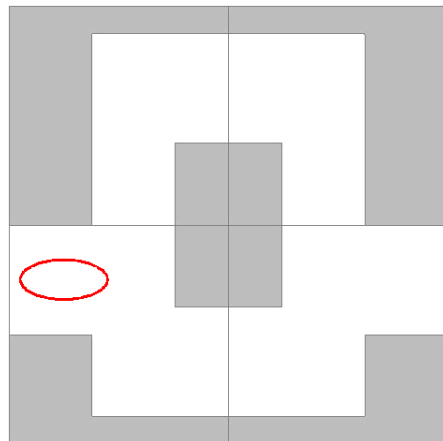
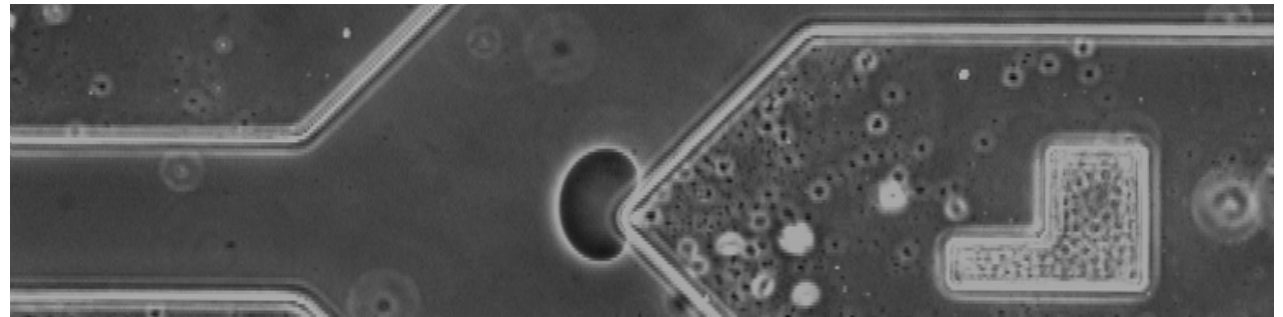
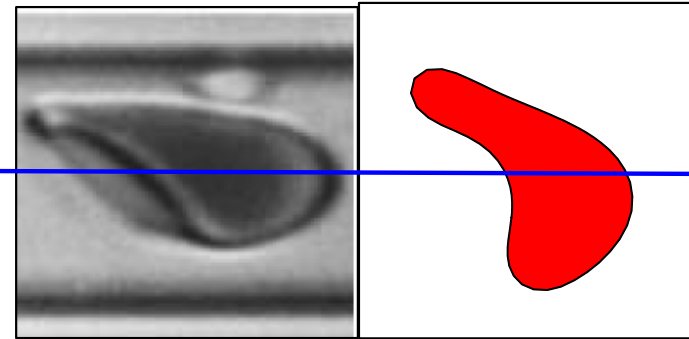
Conclusions

Dynamics under shear flow

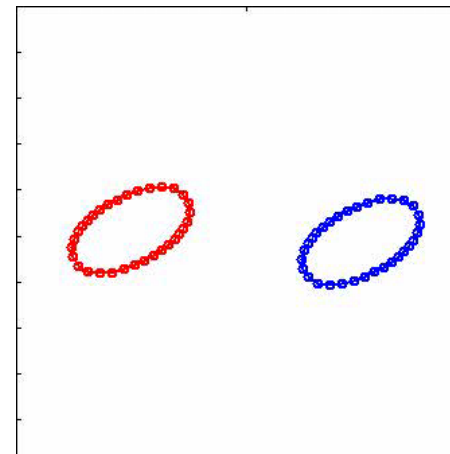


(a) Capillary Number

Lateral migration (Slipper)



T-junction



Interaction