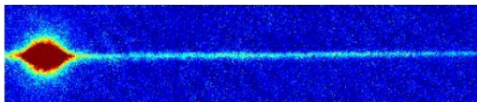


# Superfluidité et localisation quantique dans les condensats de Bose-Einstein unidimensionnels

Mathias ALBERT<sup>1</sup>

<sup>1</sup>Laboratoire de Physique Théorique et Modèles Statistiques - Orsay



UNIVERSITÉ  
PARIS-SUD 11

# People involved in this work



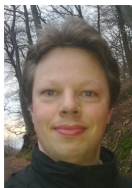
P. Leboeuf



N. Pavloff



M. Albert



T. Paul



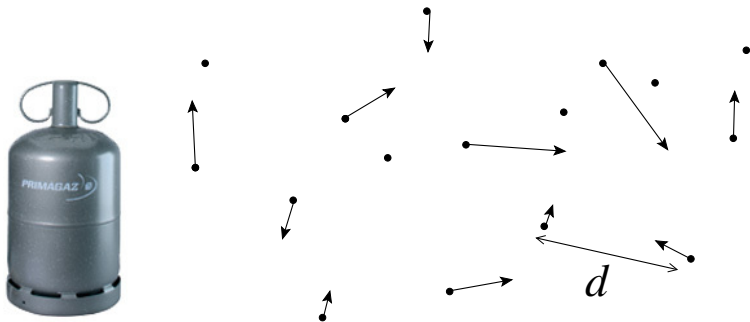
P. Schlagheck

- 1 **Introduction to Superfluidity and Localization**
- 2 **Transport of a BEC through disorder**
- 3 **Dipole oscillations in a harmonic trap**
- 4 **Conclusion and Outlook**

- 1 **Introduction to Superfluidity and Localization**
- 2 Transport of a BEC through disorder
- 3 Dipole oscillations in a harmonic trap
- 4 Conclusion and Outlook

# The system under considerations

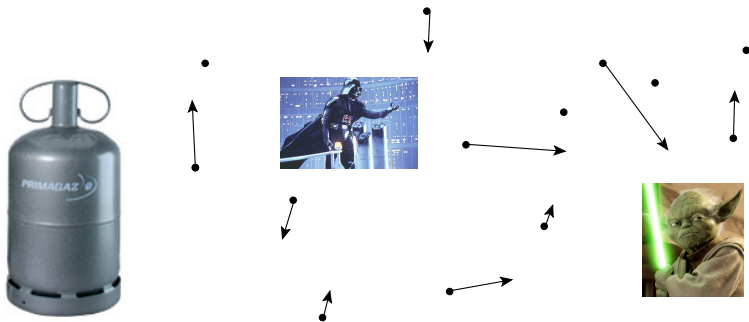
## Classical gas at room temperature



- $d$  is the inter-particle distance.
- $T$  is related to the average kinetic energy.

# The system under considerations

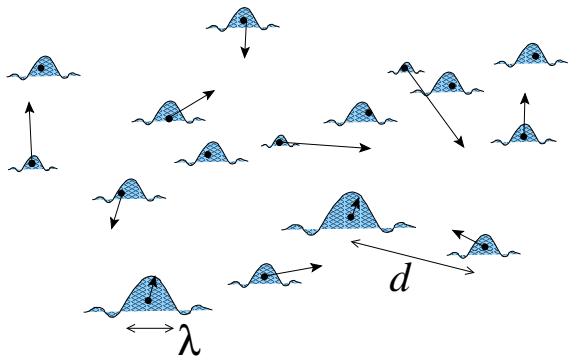
Classical gas at room temperature **with interactions**



- $d$  is the inter-particle distance.
- $T$  is related to the average kinetic energy.

# The system under considerations

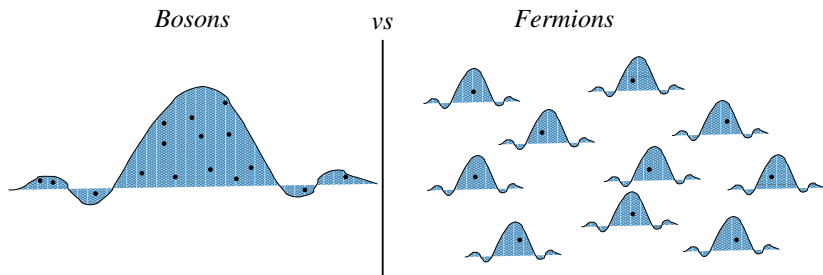
## Quantum gas at low temperature



- $d$  is the inter-particle distance.
- $\lambda$  is the de Broglie wave length.

# The system under considerations

At very low temperature, particles become indistinguishable.

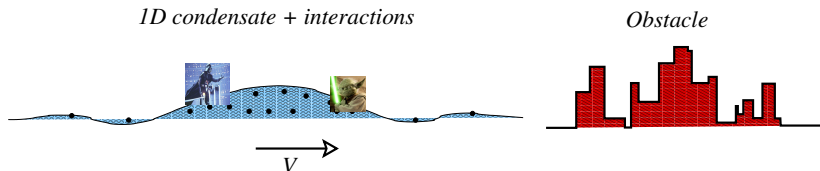


- Bosons like each other → condensation in a single quantum state (Bose-Einstein condensation).
- Fermions don't like each other → effective "interactions".



# The system under considerations

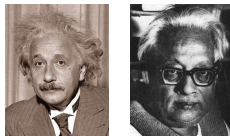
Bosons at  $T = 0$ , weak repulsive contact interactions, 1D.



- Interaction effects in phase coherent systems.
- Non-linear transport, superfluidity, Anderson localization.

# Bose-Einstein Condensation : Basic Concepts

- $N$  Bosons without interaction



When  $\lambda_{dB} \sim d$  Bosons condense into a macroscopic wave function

$$\Psi(\vec{r}_1, \vec{r}_2, \dots, \vec{r}_N) = \psi(\vec{r}_1)\psi(\vec{r}_2) \cdots \psi(\vec{r}_N)$$

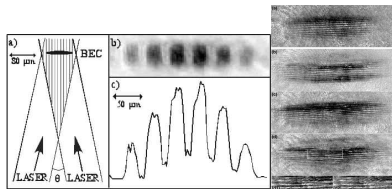
- BEC also exists with interactions (Bogoliubov, Penrose, Onsager, Feynman)

Gross-Pitaevskii equation (weakly interacting bec)

$$i\hbar\partial_t\psi(\vec{r}, t) = \left( -\frac{\hbar^2}{2m}\Delta + V_{ext}(\vec{r}) + \underbrace{gN|\psi(\vec{r}, t)|^2}_{\text{mean field interaction}} \right) \psi(\vec{r}, t)$$

# Bose-Einstein Condensation : Basic Concepts

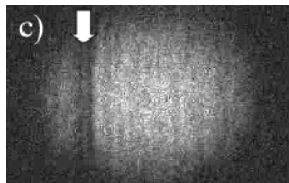
## ● Phase Coherence



LKB (2004)

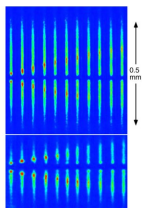
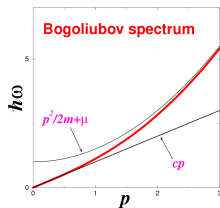
MIT

## ● Superfluidity



Pullman (2007)

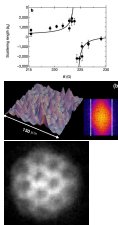
## ● Collective excitations



MIT (1997)

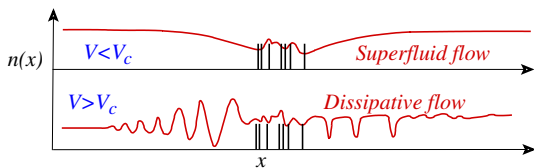
## ● Very clean experiments

- Interactions are controlled at will
- Disorder is well controlled
- Seeing the wave function



# Superfluidity

## Discovery of Superfluidity in Liquid Helium (1928-1938)



- No dissipation
- Irrotational
- No entropy
- Critical velocity

## Many Body phase coherence

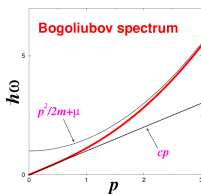
$$\mathbf{v}_s = \frac{\hbar}{m} \vec{\nabla} \phi$$

## Landau's criterion for dissipation

$$V \geq V_c = \min_p \left( \frac{\varepsilon(p)}{p} \right)$$

$$\Rightarrow \text{if } \varepsilon(p) = \frac{p^2}{2m} \rightarrow V_c = 0$$

$$\Rightarrow \text{if } \varepsilon(p) = cp \rightarrow V_c = c$$

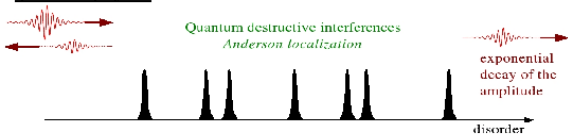


$c \sim \sqrt{\text{density}}$  is the speed of sound.

# Anderson Localization of non-interacting particles

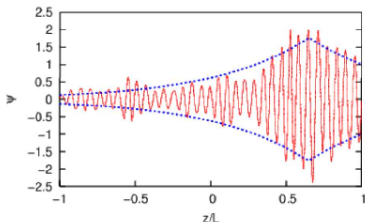
- Dynamical picture

quantum physics



$$\langle \ln [T(E)] \rangle = -L/L_{loc}, \quad P(T, L) = \frac{1}{\sqrt{4\pi T}} \sqrt{\frac{L_{loc}}{L}} \exp \left[ -\frac{L_{loc}}{4L} \left( \frac{L}{L_{loc}} + \ln T \right)^2 \right]$$

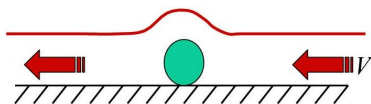
- Static picture



$$\ln |\psi_E(z)| \sim -\frac{|z|}{L_{loc}(E)}$$

- fast oscillations gives  $E$
- exponentially decaying envelope

## Superfluidity



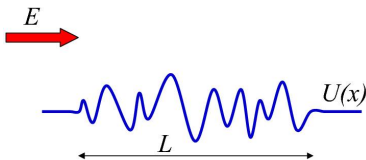
- No dissipation
- No drag force
- Perfect transmission

### Critical velocity

$$v_c = \min(\varepsilon(p)/p) \\ = c$$

*Interaction*  $\Leftrightarrow$  *Disorder*

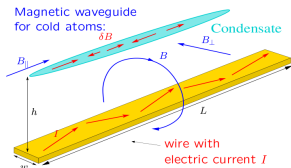
## Anderson Localization



- Exponential decay
- $T \sim \exp(-L/L_{loc})$
- Log Normal distribution

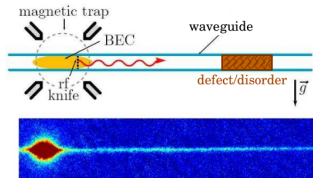
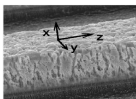
# Recent experiments on localization with cold atoms

## Atom laser, atom chip



⇒ random variations of the magnetic potential along the waveguide

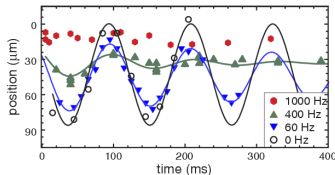
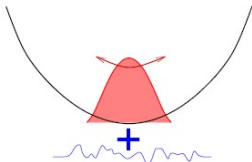
microscopic image of the wire:



J. Fortagh *et al* PRA 2002, J. Estève *et al* PRA 2004, T. Paul *et al* PRA 2005

Guerin *et al* PRL 2006

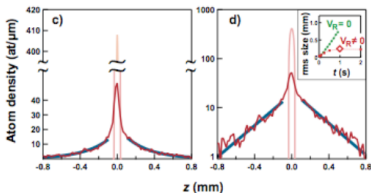
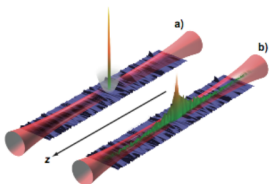
## Dipole oscillations in disorder : Firenze, Rice, Hannover, Orsay (2001-)



No relation with Anderson localization : M. Albert *et al* PRL 2008

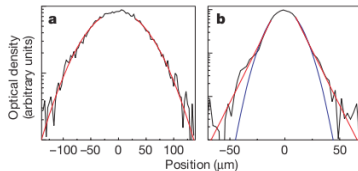
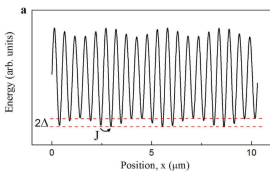
# Recent experiments on localization with cold atoms

- Orsay : Billy *et al*, *Nature* 2008 : Weakly interaction BEC in a **speckle disorder**



- Firenze : Roati *et al*, *Nature* 2008 : Non interacting cold atoms in a **quasi-periodic potential**

$$\hat{H}_{exp} = -\frac{\hbar^2}{2m} \frac{\partial^2}{\partial x^2} + V_1 \cos^2(k_1 x) + V_2 \cos^2(k_2 x)$$



Different from Anderson localization : M. Albert and P. Leboeuf, arXiv :0905.2331.



## 1 Introduction to Superfluidity and Localization

## 2 Transport of a BEC through disorder

T. Paul, [M. Albert](#), P. Schlagheck, P. Leboeuf and N. Pavloff, PRA **80** (2009).

[M. Albert](#), T. Paul, N. Pavloff and P. Leboeuf, *to be submitted*.

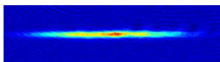
## 3 Dipole oscillations in a harmonic trap

## 4 Conclusion and Outlook

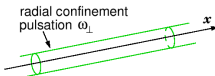
# Transport of a 1D condensate

## 3D Gross-Pitaevskii equation (weakly interacting bec)

$$i\hbar\partial_t\psi(\vec{r}, t) = \left( -\frac{\hbar^2}{2m}\Delta + V_{\text{ext}}(\vec{r}) + \underbrace{gN|\psi(\vec{r}, t)|^2}_{\text{mean field interaction}} \right) \psi(\vec{r}, t)$$

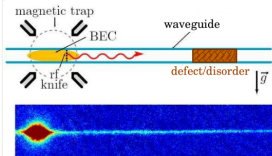


quasi-1D condensate (IOTA)  
 longitudinal size  $\sim 10^2 \mu\text{m}$   
 transverse size  $\sim 1 \mu\text{m}$



harmonic radial confinement :

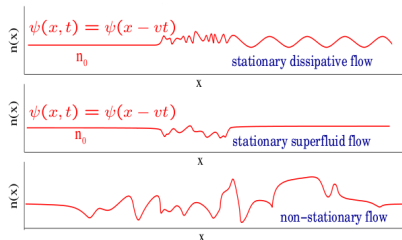
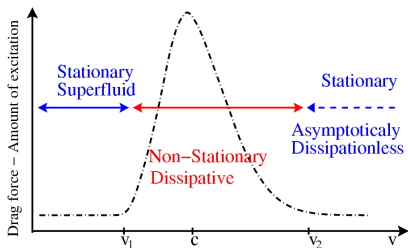
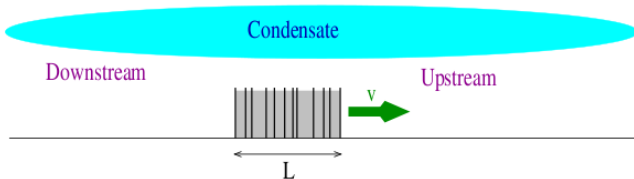
$$V_{\perp}(\vec{r}_{\perp}) = \frac{1}{2} m \omega_{\perp}^2 r_{\perp}^2 .$$



## Effective 1d equation

$$i\hbar\partial_t\psi(x, t) = \left( -\frac{\hbar^2}{2m} \frac{\partial^2}{\partial x^2} + V_{\text{ext}}(x) + g_{\nu}|\psi(x, t)|^{2\nu} \right) \psi(x, t)$$

# Different regimes of transport



- The two regimes below  $v_2$  does not exist without interaction.
- For  $v \gg c$  one recovers the ideal gas.

# Transport of a 1D BEC in free space

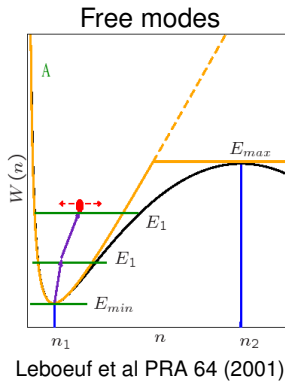
## Effective 1d equation

$$i\hbar\partial_t\psi(x,t) = \left(-\frac{\hbar^2}{2m}\frac{\partial^2}{\partial x^2} + V_{\text{ext}}(x) + g_\nu|\psi(x,t)|^{2\nu}\right)\psi(x,t)$$

## Steady flow with current $j$

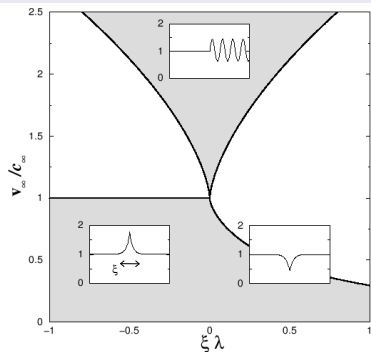
$$\left\{ \begin{array}{l} \psi(x,t) = A(x)e^{iS(x)}e^{-i\mu t} \\ \frac{1}{2}\left(\frac{dA}{dx}\right)^2 + W(A) = E_{cl} \\ W(A) = \frac{j^2}{2A^4} + \mu A^2 - \frac{g_\nu}{\nu+1}A^{2(\nu+1)} \end{array} \right.$$

- $A(x)$  is the position of a pseudo particle in  $W(A)$  at time  $x$ .
- $n = A^2$  is the density of the condensate.



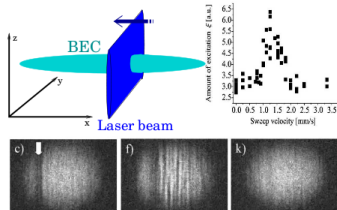
# Phase Diagram with a single impurity

We consider a single localized defect  $U(x) = \lambda\xi\delta(x)$



Leboeuf, Pavloff PRA 2001

Recent experimental test  
(Gaussian barrier)



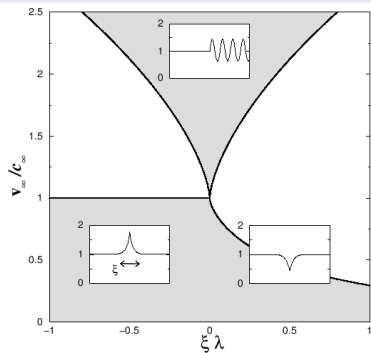
Engels and C. Atherton, Phys. Rev. Lett. 160405 (2007)

P. 99,

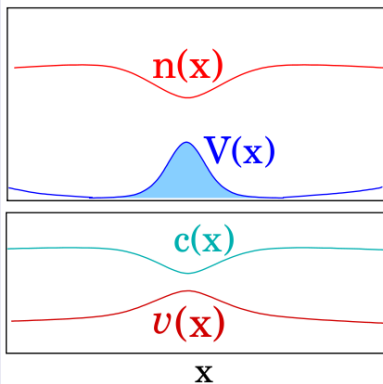
$$\xi = \hbar / \sqrt{m\mu}$$

# Phase Diagram with a single impurity

We consider a single localized defect  $U(x) = \lambda \xi \delta(x)$



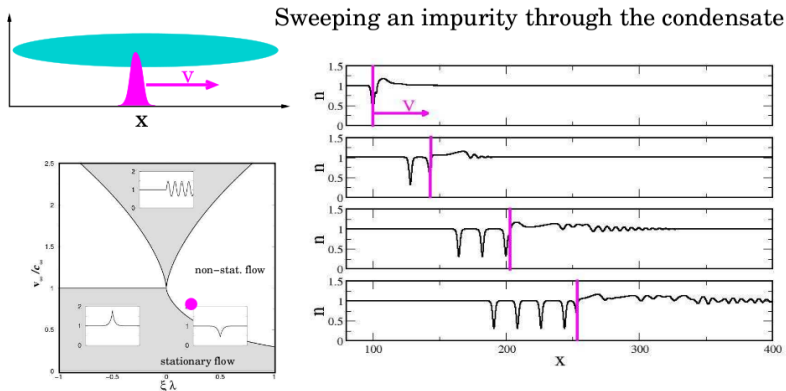
Leboeuf, Pavloff PRA 2001



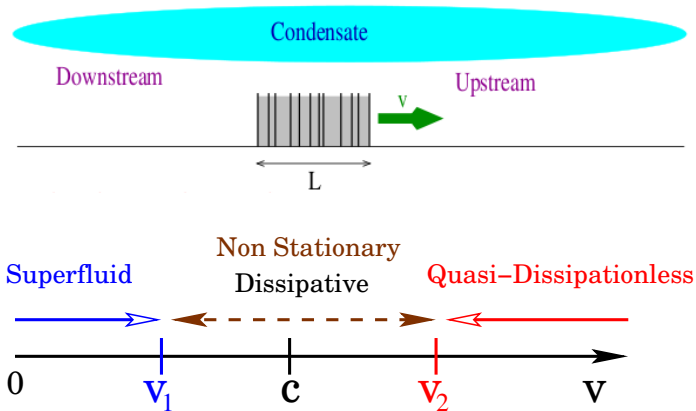
**Local Landau's criterion** : Superfluidity breaks down if  $v(x) = c(x)$ .

$$c(x) \sim n^{\nu/2}$$

## Soliton emission past an impurity, numerical simulation



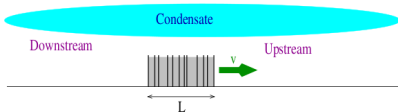
# Transport properties in disorder



- How do the critical velocities depend on disorder ?
- Effects of interactions on Anderson localization ?

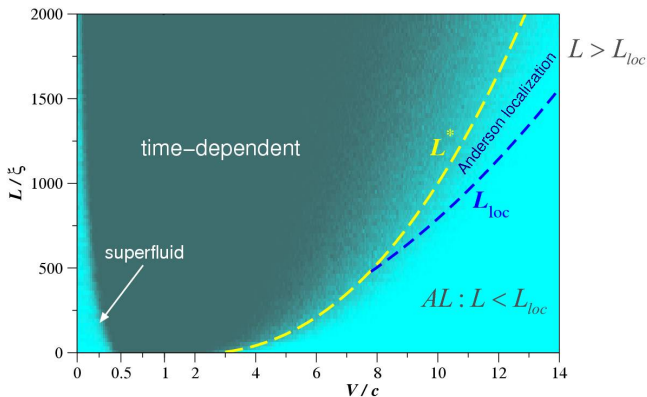


# Global picture



$$V(x) = \lambda \xi \sum_{i=1}^N \delta(x-x_i), \quad \langle V(x)V(0) \rangle - V^2 = \sigma \delta(x)$$

Paul et al, PRL 98, 210602 (2007)

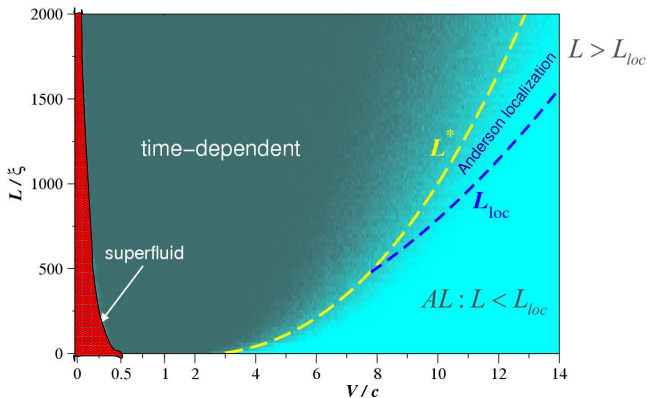


$$\lambda = \xi n_i = 0.5$$

# Superfluid Regime

Breakdown of superfluidity and extreme value statistics in a disordered BEC

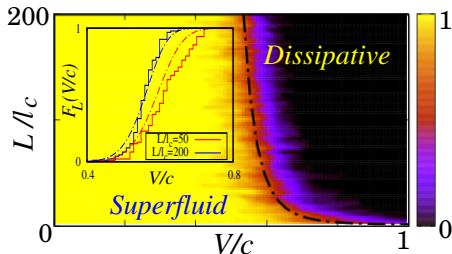
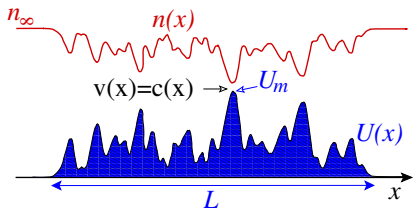
M. Albert, T. Paul, N. Pavloff and P. Leboeuf *to be submitted*



$$\lambda = \xi n_i = 0.5$$

# Distribution of the critical velocity

For **smooth disorder** one can apply the Landau's criterion locally  $v(x) = c(x)$ .



Superfluidity breaks down where the disorder is **maximal**.

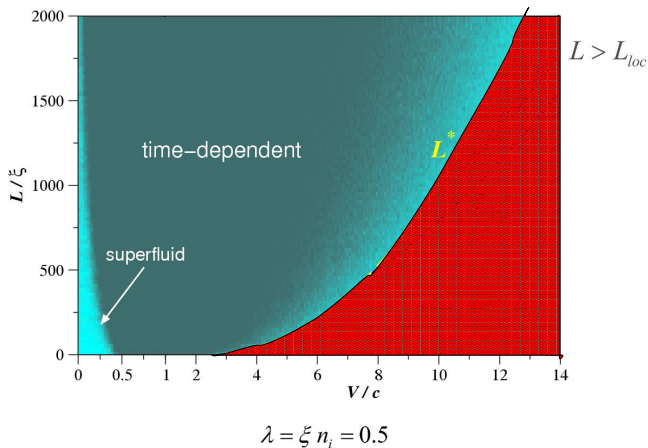
- Landau's criterion relates  $U_m$  to  $v_c$
- Extreme value statistics  $\rightarrow \mathcal{P}_L(U_m)$

$\Rightarrow P_L(v_c)$  as a function of  $L$ ,  $\langle U \rangle$ ,  $l_c$ , etc ...

M. Albert, T. Paul, N. Pavloff, P. Leboeuf, *to be submitted*.

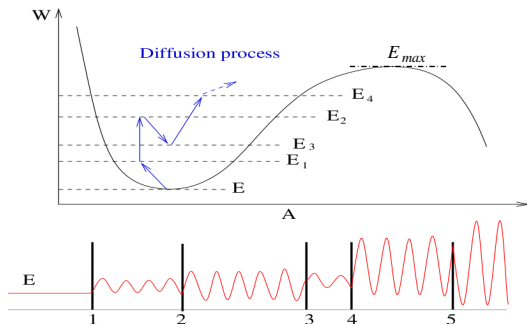
# Supersonic stationary regime

Anderson localization of a weakly interacting one dimensional Bose gas  
T. Paul, M. Albert, N. Pavloff, P. Schlagheck and P. Leboeuf *PRA* **80** (2009)



# Supersonic regime : diffusion model

Disorder induces a random walk in energy space



$$\lambda = \frac{mE_{cl}}{2\hbar\kappa^2}, \quad \kappa = \frac{m}{\hbar} \sqrt{v^2 - c^2}$$

$$\text{Transmission } T = \frac{1}{1 + \lambda}$$

$$\frac{\partial P}{\partial x} = \frac{\partial}{\partial \lambda} \left[ \lambda(1 + \lambda) \frac{\partial P}{\partial \lambda} \right]$$

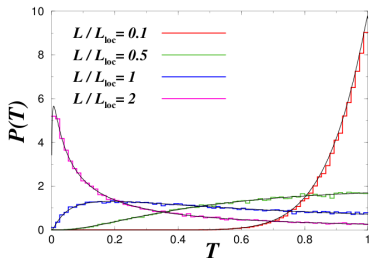
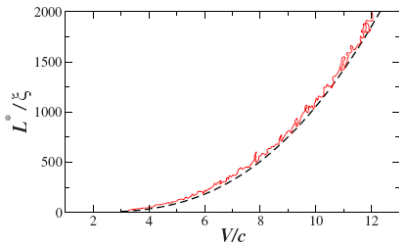
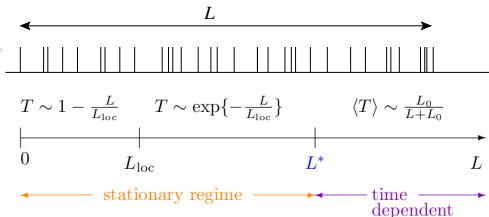
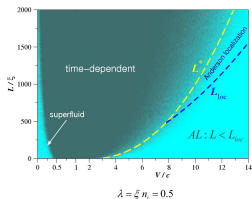
DMPK equation (1982-1988)

$$x = L/L_{loc}(\kappa)$$

$$P(\lambda, x) = \frac{e^{-x/4}}{\sqrt{2\pi x^3}} \int_{\text{acosh}(1+2\lambda)}^{\infty} \frac{u e^{-u^2/(4x)}}{\sqrt{\cosh(u) - 1 - 2\lambda}} du$$

When  $\langle E_{cl} \rangle(L) = E_{max}$  the number of stationary solutions decreases drastically. This gives a very good estimate for the supersonic boundary.

# Anderson Localization + interactions

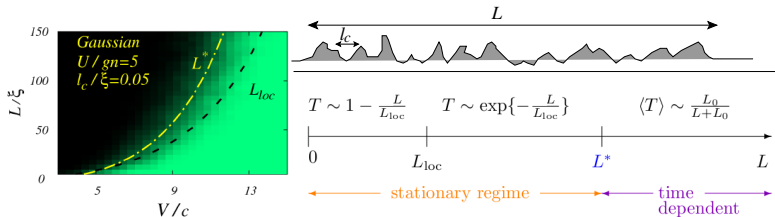


- Renormalization of  $L_{loc}$  by interactions  $k \rightarrow \kappa = \frac{m}{\hbar} \sqrt{v^2 - c^2}$
- Destruction of localization for  $L > L^*$  due to time dependent fluctuations.

T. Paul *et al* PRL **98** (2007),

T. Paul, *et al* PRA **80** (2009).

# Anderson Localization + interactions + correlations

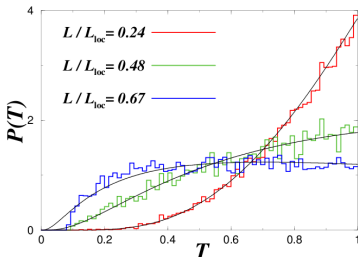


Correlation function  $(t = L/L_{loc})$

$$\langle U(x)U(x') \rangle \sim \exp \left[ -\frac{1}{2} \left( \frac{x - x'}{l_c} \right)^2 \right]$$

No analytical proof but DMPK eq works.

Similar results for other short range correlated disorders.



- Renormalization of  $L_{loc}$  by interactions  $k \rightarrow \kappa = \frac{m}{\hbar} \sqrt{v^2 - c^2}$
- Destruction of localization for  $L > L^*$  due to time dependent fluctuations.

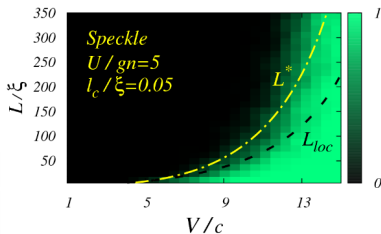
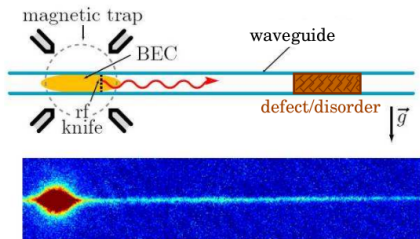
T. Paul *et al* PRL **98** (2007),

T. Paul, M. A. *et al* PRA **80** (2009).

# Anderson Localization with atom laser

Orsay experiment PRL 97 (2006)

Laser speckle  $\langle V(x)V(x') \rangle = V_R^2 \left[ \frac{\sin[(x-x')/\ell_c]}{(x-x')/\ell_c} \right]^2$ ,  $L_{loc} = \frac{\hbar^4 \kappa^2}{\pi m V_R^2 \ell_c (1 - \kappa \ell_c)}$



$\ell_c \simeq 0.26 \mu\text{m}$ ,  $v \simeq 1.6 \text{ mm/s}$ ,  $c \simeq 0.9 \text{ mm/s}$ ,  $V_R = 34 \text{ Hz} \Rightarrow L_{loc} \simeq 0.25 \text{ mm}$   
 Reachable experimentally !



1 Introduction to Superfluidity and Localization

2 Transport of a BEC through disorder

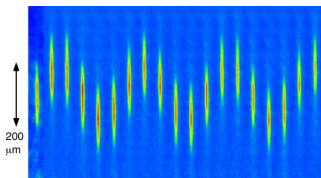
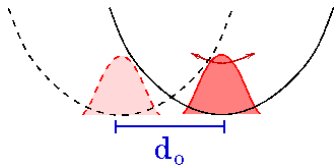
**3 Dipole oscillations in a harmonic trap**

[M. Albert](#), T. Paul, N. Pavloff and P. Leboeuf PRL **100** (2008)

4 Conclusion and Outlook

# Dipole oscillations

## Dipole oscillations in a harmonic trap

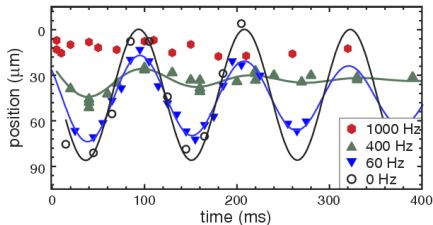


10 milliseconds per frame

MIT 1997

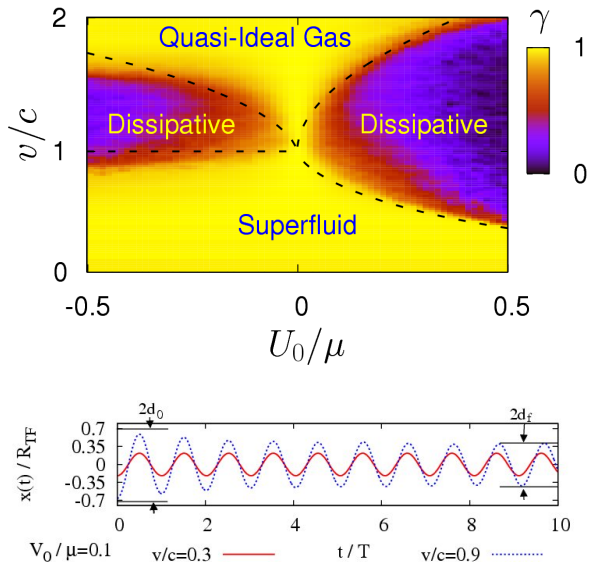
## Many groups are studying the damping of collective modes

- **Firenze** : periodic and speckle potential (PRL **86** (2001), PRL **95** (2005))
- **IOTA Orsay** : speckle (not published)
- **Rice (USA)** : speckle PRA **75** (2008)
- **Hannover** : Bloch oscillations in quasi-periodic potential NJP **10** (2008))



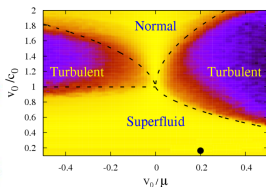
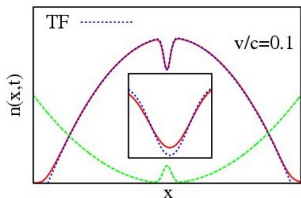
Damping and Frequency shift of collective modes.

# Global picture with a single peak



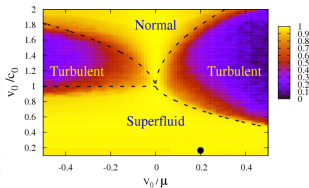
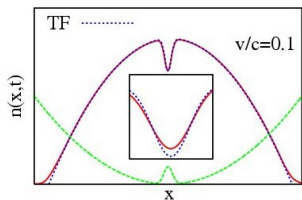
- yellow = undamped motion
- Existence of 3 regimes
  - Superfluid
  - Dissipative
  - Normal/quasi-dissipationless
- lower dashed lines = local Landau criterion
- upper dashed lines = existence of quasi-stationary states

## Condensate density during the first oscillation

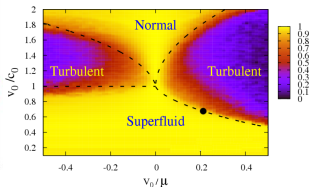
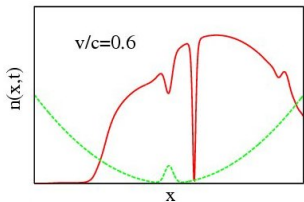


- Superfluid regime
- No damping

# Different regimes of transport

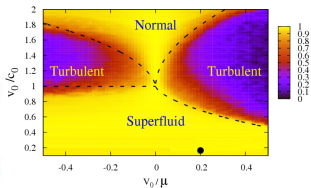
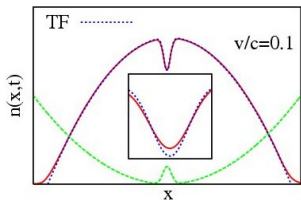


- Superfluid regime
- No damping

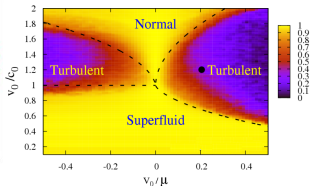
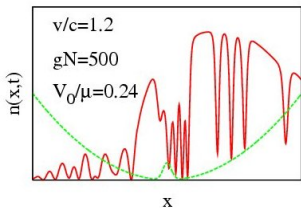


- One soliton is emitted
- Damping

# Different regimes of transport

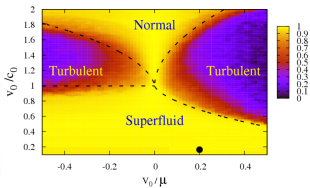
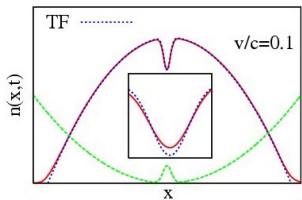


- Superfluid regime
- No damping

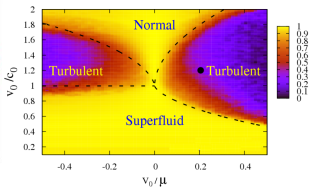
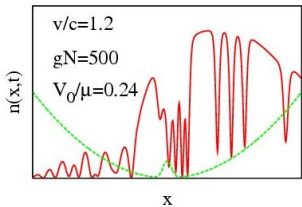


- Strongly time dependent
- Oscillations are destroyed

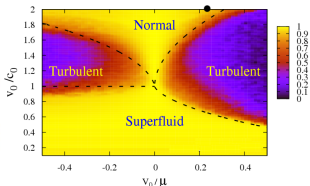
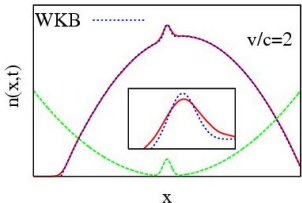
# Different regimes of transport



- Superfluid regime
- No damping

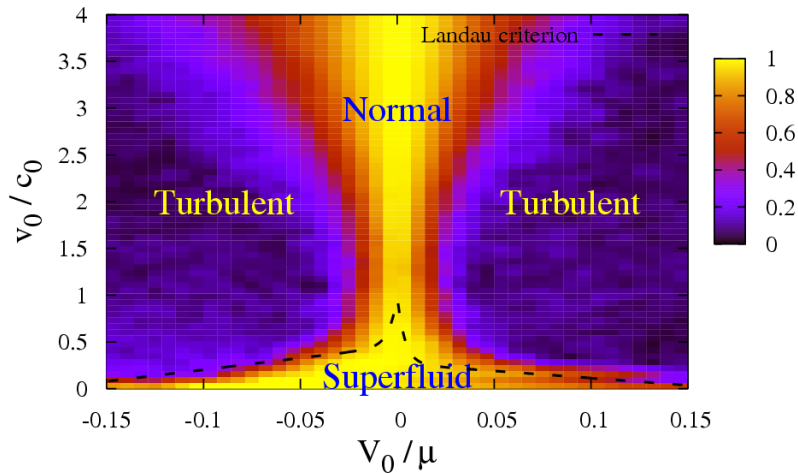


- Strongly time dependent
- Oscillations are destroyed



- Quasi-dissipationless
- No damping

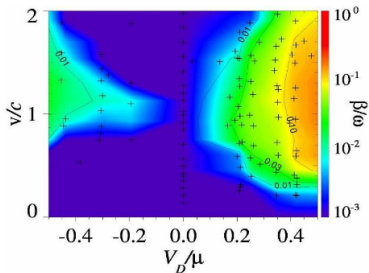
# Dipole oscillations in disorder



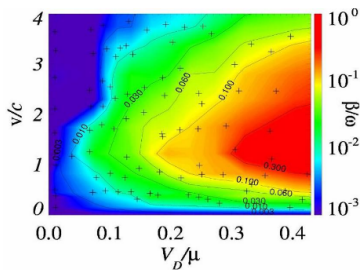


# New experimental results at Rice (Hulet's group)

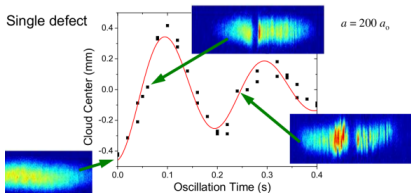
## Single defect



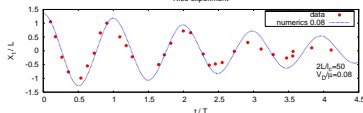
## Speckle



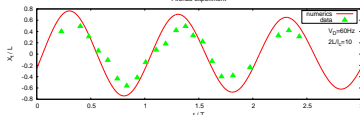
### Single defect



### Rice experiment

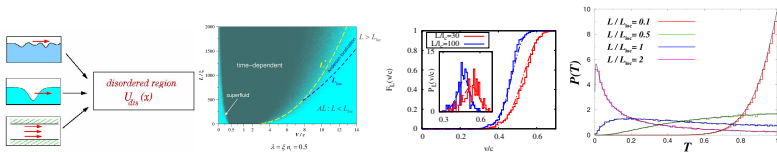


### Finze experiment



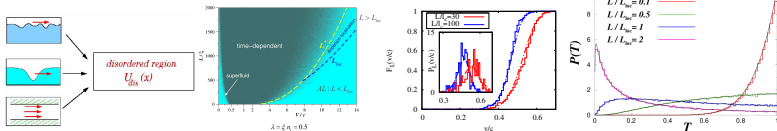
R. Hulet, [http://www.sit.it/SIF/resources/public/files/va2009/hulet\\_0624.pdf](http://www.sit.it/SIF/resources/public/files/va2009/hulet_0624.pdf)

# Conclusion and outlook



- General picture of transport : Superfluid, Dissipative, Quasi-Ideal Gas regimes.
- The superfluid critical velocity is related to extreme events.
- Effects of interaction on localization
  - DMPK eq., Renormalization of  $L_{loc}$ ,  $k \rightarrow \kappa = m\sqrt{v^2 - c^2}/\hbar$ .
  - Destruction of localization for  $L > L^*$  due to time dependent fluctuations.
- The localization transition in bichromatic potentials is not related to Anderson localization.
- Open questions : time dependent regime, link between stationary states and wave packets, higher dimension, strongly correlated regime, Fermi systems ...

# Conclusion and outlook



P. Leboeuf



N. Pavloff



M. Albert



T. Paul



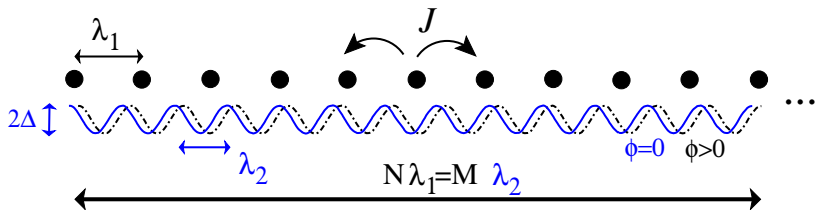
P. Schlagheck

Thank you for your attention !

For further reading see

- Paul *et al* PRA **80** 033615 (2009)
- Albert *et al* PRL **100** 250405 (2008)
- Albert and Leboeuf arXiv :0905.2331 (2009)
- Albert *et al*, to be submitted

# 1d Aubry-André-Harper Hamiltonian



## 1d Aubry-André Hamiltonian

$$\hat{H}_{AA} = J \sum_n |n\rangle\langle n+1| + |n+1\rangle\langle n| + \Delta \sum_n \cos(2\pi\beta n + \phi) |n\rangle\langle n|$$

$$\hat{T}_{\lambda_1}|n\rangle = \exp(-i\hat{p}\lambda_1/\hbar)|n\rangle = |n+1\rangle \quad \text{and} \quad \hat{q}|n\rangle = q_n|n\rangle = n\lambda_1|n\rangle$$

## 1d Harper Hamiltonian

$$\hat{H}_H = 2J \cos\left(2\pi\frac{\hat{p}}{P}\right) + \Delta \cos\left(2\pi\frac{\hat{q}}{Q} + \phi\right), \quad Q = \lambda_2, \quad P = 2\pi\hbar/\lambda_1$$

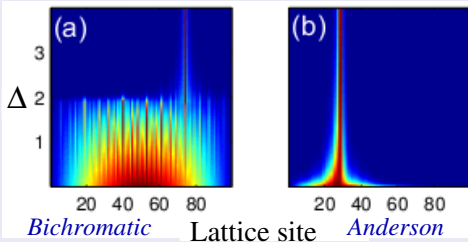
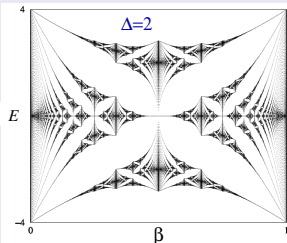
# Phenomenology

## Hofstadter's Butterfly

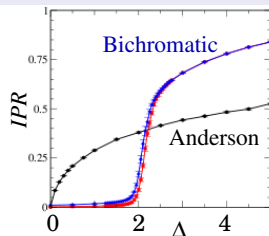
- $\beta = p/q$  : band structure
- $\beta$  irrational : Cantor ensemble

## Localization transition at $\Delta = 2J$

$\neq$  Anderson : localization  $\forall \Delta$  in 1d



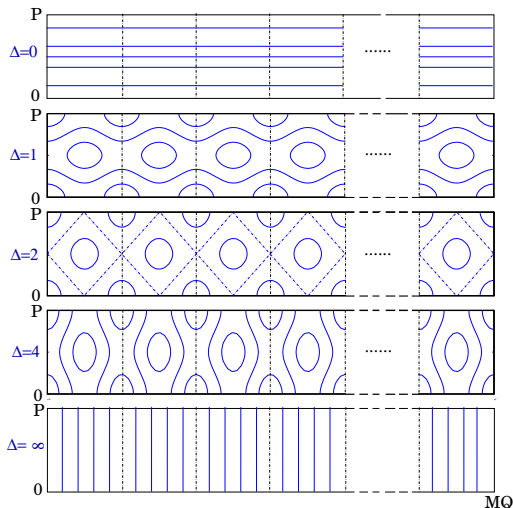
Lahini *et al* cond-mat 2008



Roux *et al* PRA 2008

# Underlying classical dynamics in phase space

$$\mathcal{H} = 2J \cos(2\pi p/P) + \Delta \cos(2\pi q/Q + \phi)$$



- All classical trajectories are **delocalized**
- The last extended trajectory disappears
- All classical trajectories are **localized**

# Results for the experimental parameters

## Firenze Experiment

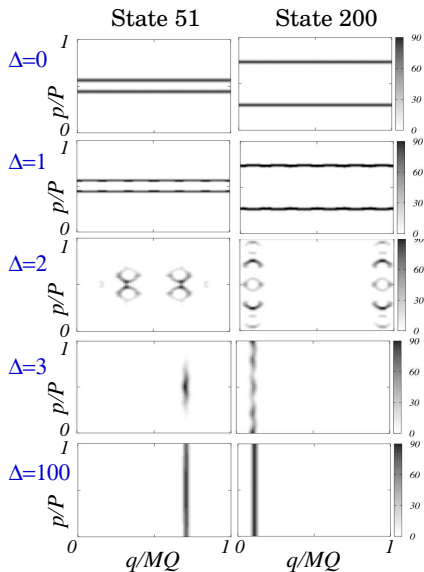
$$\lambda_1 = 1032 \text{ nm and } \lambda_2 = 862 \text{ nm}$$

$$\frac{\lambda_1}{\lambda_2} = \frac{1032}{862} = \frac{512}{431} \simeq 1.19$$

$$\beta (= \frac{M}{N}) = \frac{512}{431} - 1 = \frac{85}{431} \simeq 0.19$$

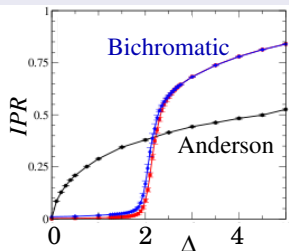
Even if the semi-classical limit is not achieved the **classical dynamics is mostly responsible** for the localization **transition**.

⇒ Localization is not related to Anderson localization



# Anderson Model

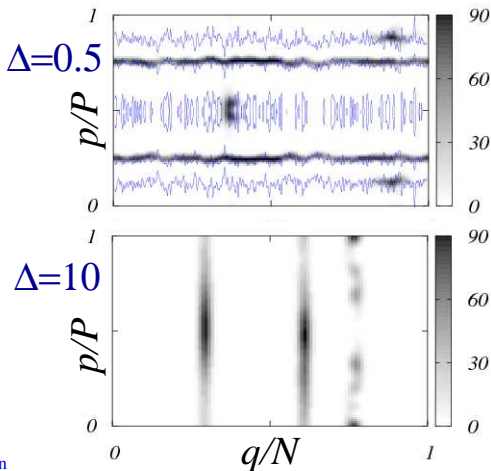
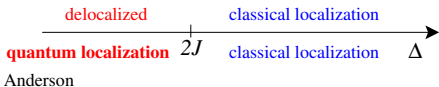
## Inverse Participation Ratio



Roux *et al* PRA 2008

**Non trivial Localization  
for  $\Delta < 2J$ .**

Bichromatic



$N = 401, \phi = 0$ . States 21, 201 and 301.



# Phase Space representation and Semi-classical limit

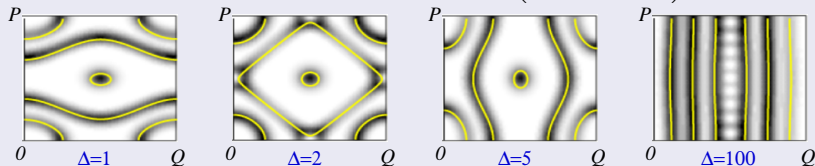
- Diagonalization of  $\hat{H} \rightarrow N$  eigenstates  $|\psi_k\rangle, E_k$
- Projection on **coherents states**  $|q, p\rangle$  (Gaussian wave packets of width  $\sim h = \beta$ ).
- **Husimi distribution**  $W_{\psi_k}(q, p) \sim |\langle q, p | \psi_k \rangle|^2$ .

Semi-classical limit  $h = \beta \rightarrow 0$

$W_\psi$  concentrates on classical trajectories

(M=1) *Leboeuf-Saraceno/Voros 1989*

$$W_\psi \sim \exp\left(-\frac{1}{h} \frac{(E - \mathcal{H}(q, p))^2}{\dot{q}^2 + \dot{p}^2}\right)$$

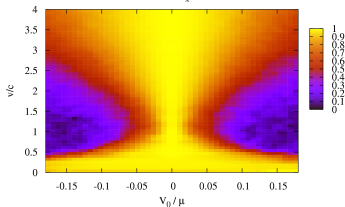
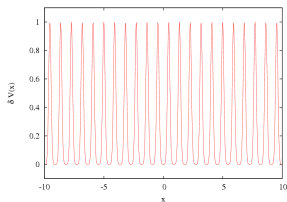


Bohr-Sommerfeld quantization rule  
1 quantum state  $\leftrightarrow$  1 classical trajectory

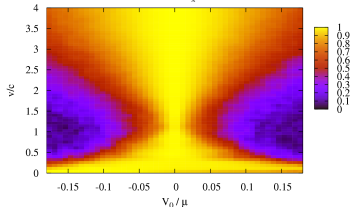
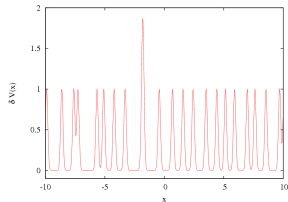
$$S = \int_{tr} pdq = \left(n + \left[\frac{1}{2}\right]\right)h$$

# Anderson Localization ?

## Without disorder

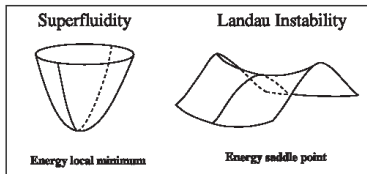


## With disorder



Not visible in the range of parameters reachable in current experiments !

## Landau's instability

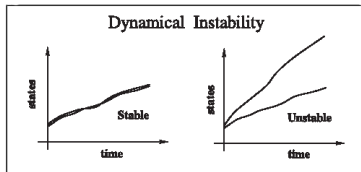


$$\psi(x) = \phi_0(x) + \delta\phi(x)$$

$$\Rightarrow \delta E = \int dx (\delta\phi, \delta\phi^*) \mathcal{M} \begin{pmatrix} \delta\phi \\ \delta\phi^* \end{pmatrix}$$

- Eigenvalue of  $\mathcal{M} < 0$
- Equivalent to Landau's criterion for small potential

## Dynamical instability

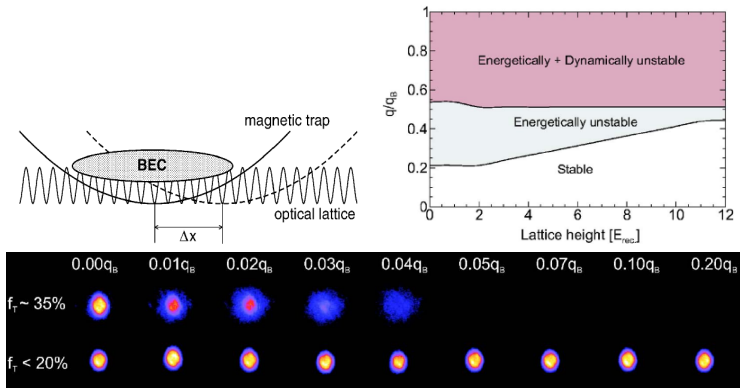


$$\psi(x, t) = \phi_0(x) + \delta\phi(x, t)$$

$$\Rightarrow i \frac{\partial}{\partial t} \begin{pmatrix} \delta\phi \\ \delta\phi^* \end{pmatrix} = \sigma_z \mathcal{M} \begin{pmatrix} \delta\phi \\ \delta\phi^* \end{pmatrix}$$

- Eigenvalue of  $\mathcal{M} \in \mathbb{C}$ .
- Only with periodic potential.

# Experimental evidence of dynamical instability

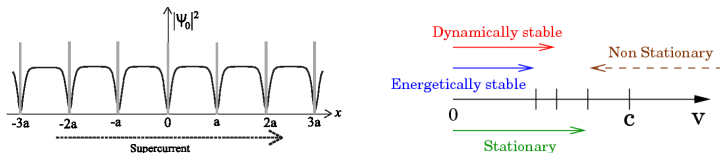


De Sarlo et al, PRA 72, 013603 (2005). Wu and Niu, New J. Phys., 5, 104, (2003).

- Energetical instability needs a “dissipative” effect to be activated.
- Dynamical instability occurs on a shorter time scale.

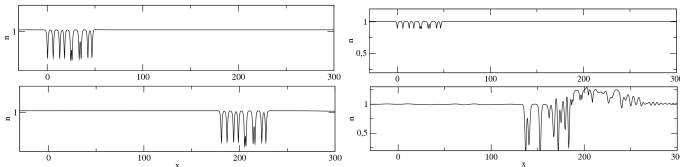
# Criterion for the breakdown of superfluidity ?

- The periodic case is pathological. Danshita et al, PRA 75 (2007).



but for a single delta peak all the criteria converge.

- Numerical studies for finite size obstacle and disorder (T. Paul not published).

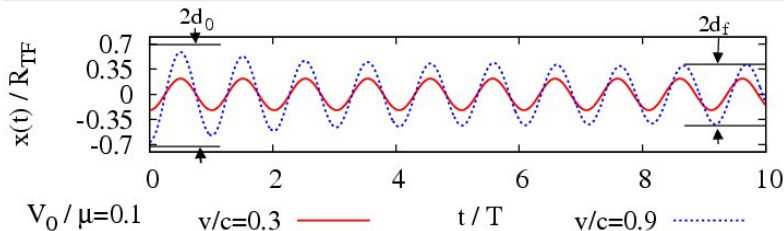


- **Conjecture** : Existence of subsonic stationary states  $\Leftrightarrow$  Energetic criterion.
- **For smooth potential** : local Landau's criterion.

# Frequency shift in the superfluid regime

Center of mass motion = harmonic oscillator with frequency shift

$$\frac{d^2}{dt^2} \langle x \rangle = -\omega_0^2 \langle x \rangle + \frac{1}{m} \int_{-\infty}^{+\infty} dx n(x - \langle x \rangle) \frac{dV(x)}{dx}$$

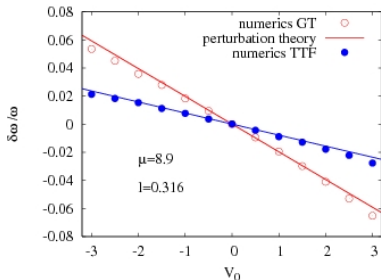


# Frequency shift in the superfluid regime

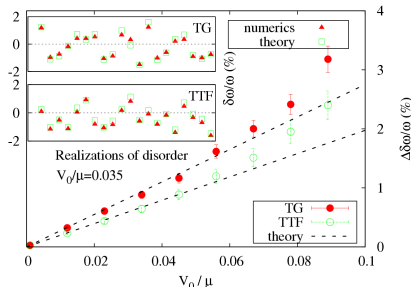
Center of mass motion = harmonic oscillator with frequency shift

$$\frac{d^2}{dt^2} \langle x \rangle = -\omega_0^2 \langle x \rangle + \frac{1}{m} \int_{-\infty}^{+\infty} dx n(x - \langle x \rangle) \frac{dV(x)}{dx}$$

## Single gaussian peak



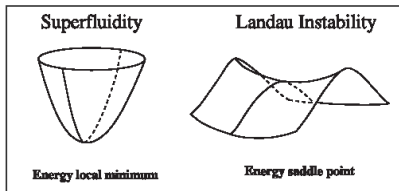
## Speckle potential



This perturbative treatment is equivalent to sum rules approach (Modugno PRA 73 013606) and hydrodynamic theory (Albert not published).

# Landau's (energetical) instability of the superflow

Is the **Superfluid** state the **ground state** of the system?  $\Rightarrow$  **Linear stability analysis** by expanding the **energy functional** around  $\phi_0$ .



$$\psi(x) = \phi_0(x) + \delta\phi(x)$$

$$\Rightarrow \delta E = \int dx (\delta\phi, \delta\phi^*) \mathcal{M} \begin{pmatrix} \delta\phi \\ \delta\phi^* \end{pmatrix}$$

- Eigenvalues of  $\mathcal{M} < 0$ ?

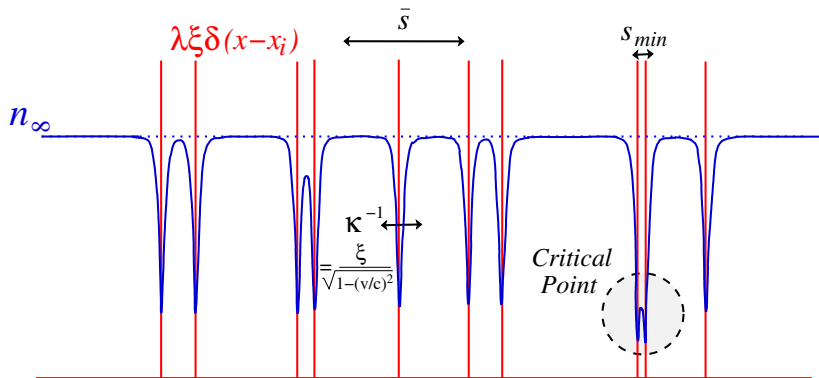
- **First step** : find the (stationary) superfluid state (not easy!).
- **Second step** : diagonalize  $\mathcal{M}$  for different  $v$ .

In the **homogeneous** case ( $V(x) = 0$ ) : Landau's criterion  $v_c = c = \sqrt{gn_0/m}$ .

This is also possible to solve this problem for a **few potentials** ( $\delta$ , double  $\delta$ , array of  $\delta$  and square barrier) but in general this is a **very difficult problem** (even numerically).

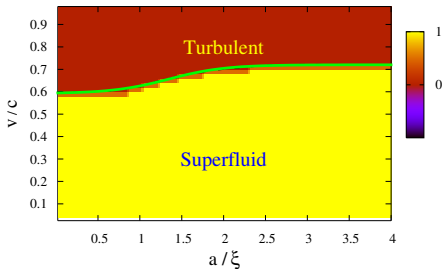
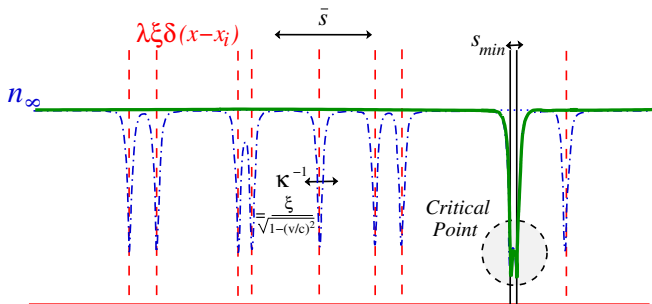


# Distribution of the critical velocity with delta peaks



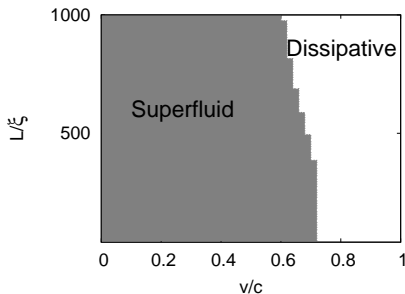
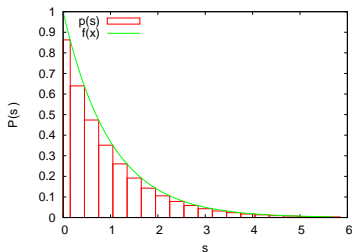
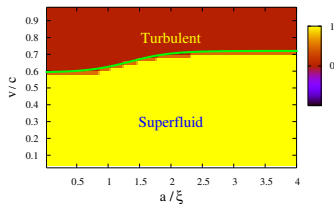
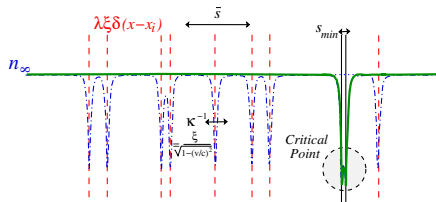
One cannot apply the Landau's criterion because the density is not smooth.

# First Idea : take the two closest peaks

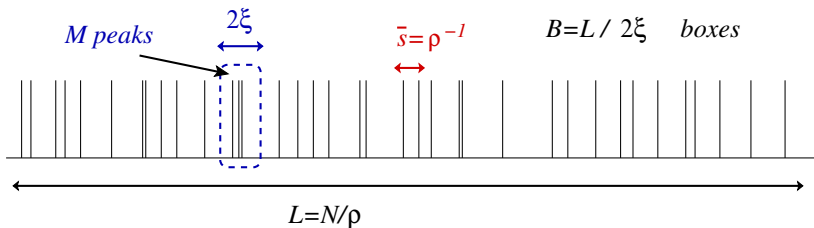
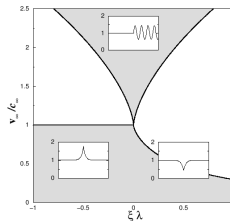
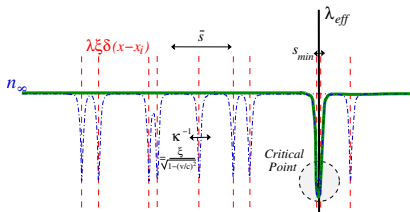


Sols and Zapata PRB 53 6693 (1995).

# First Idea : take the two closest peaks



# Second Idea : effective single impurity



Playing with extreme value statistics yields  $\lambda_{eff} = \lambda \langle M_{max} \rangle(L)$ . Then using the single impurity criterion one gets  $v_c(L)$ .

# Second Idea : effective single impurity

