

Dimensionality reduction and pathway network analysis of transcriptome data: Application to T-cell characterization

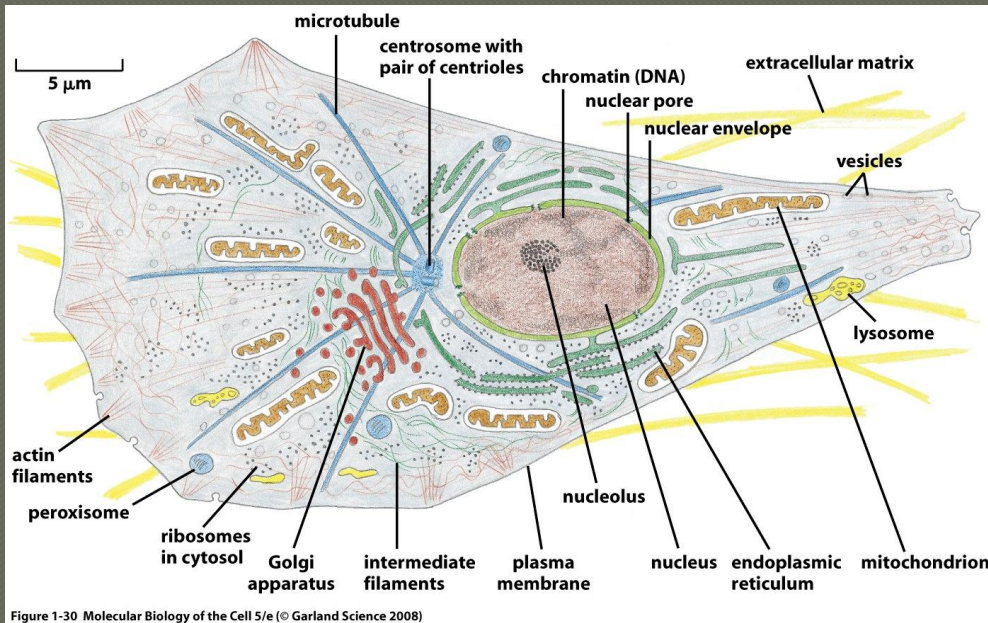
Soutenance de Thèse de Christophe Bécavin
6 Décembre 2010

Rapporteurs: Alain Arneodo, Laboratoire Joliot-Curie, ENS Lyon
Lars Rogge, Institut Pasteur, Paris

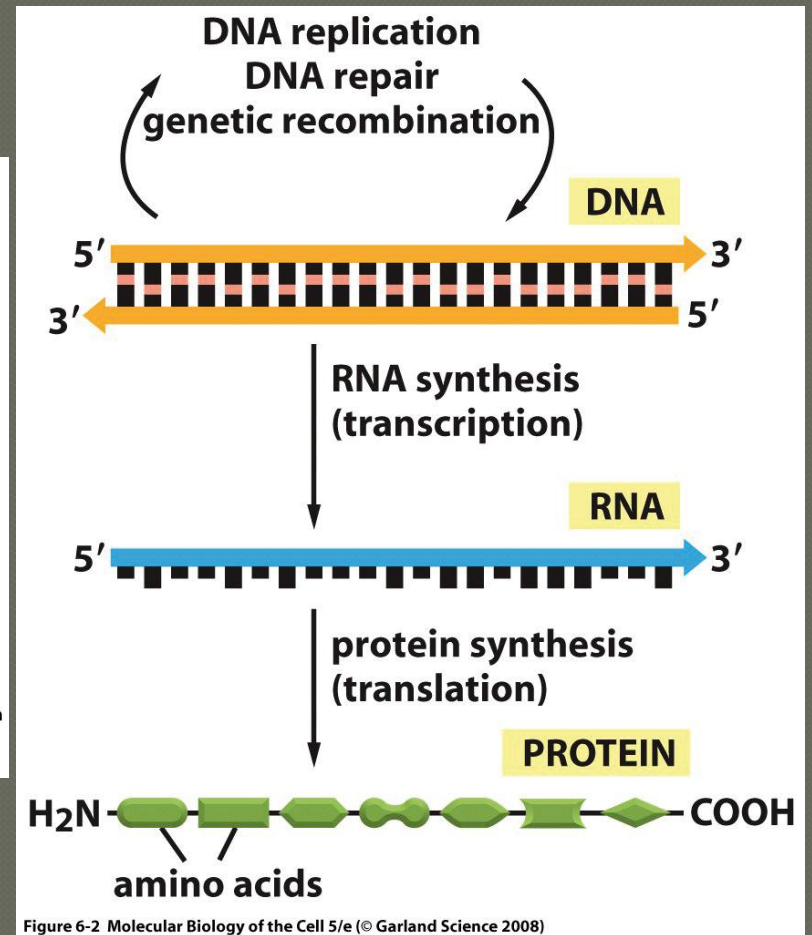
Examineurs: Jean-Marc Victor, LPTMC, Paris 6
Sylviane Pied, Institut Pasteur, Lille
Andrei Zinovyev, Institut Curie, Paris

Directrice de thèse: Annick Lesne, LPTMC, Paris 6
Co-Directeur de thèse: Arndt Benecke, IHES, Paris

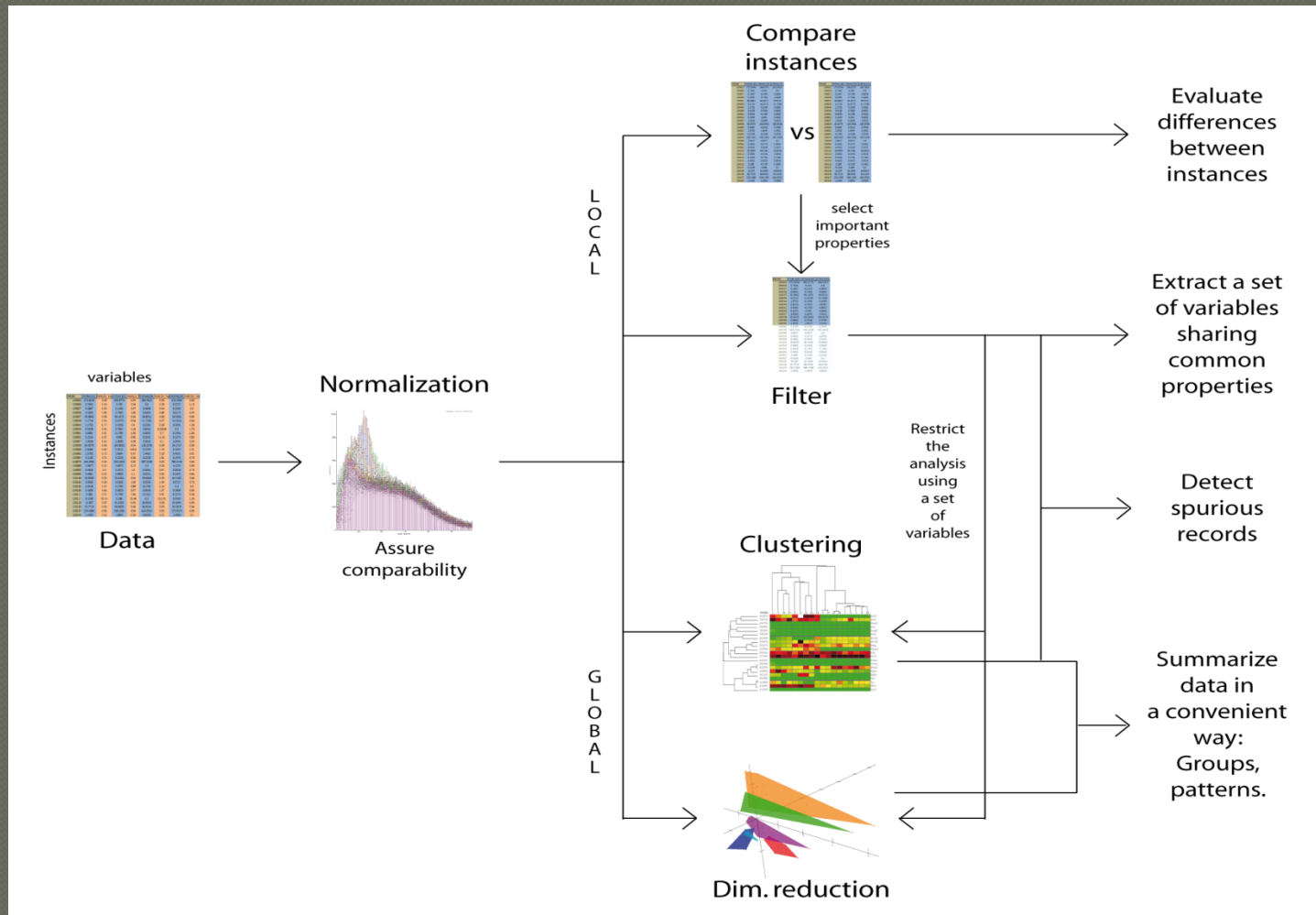
Transcriptome



Albert et al., Molecular Biology of the Cell, 4th Ed



Typical work-flow in data analysis



Index

- Review of dimensionality reduction techniques

- SVD-MDS

- Pathway network analysis software

- 1st Application: Cerebral Malaria characterization

- 2nd Application: Treg characterization

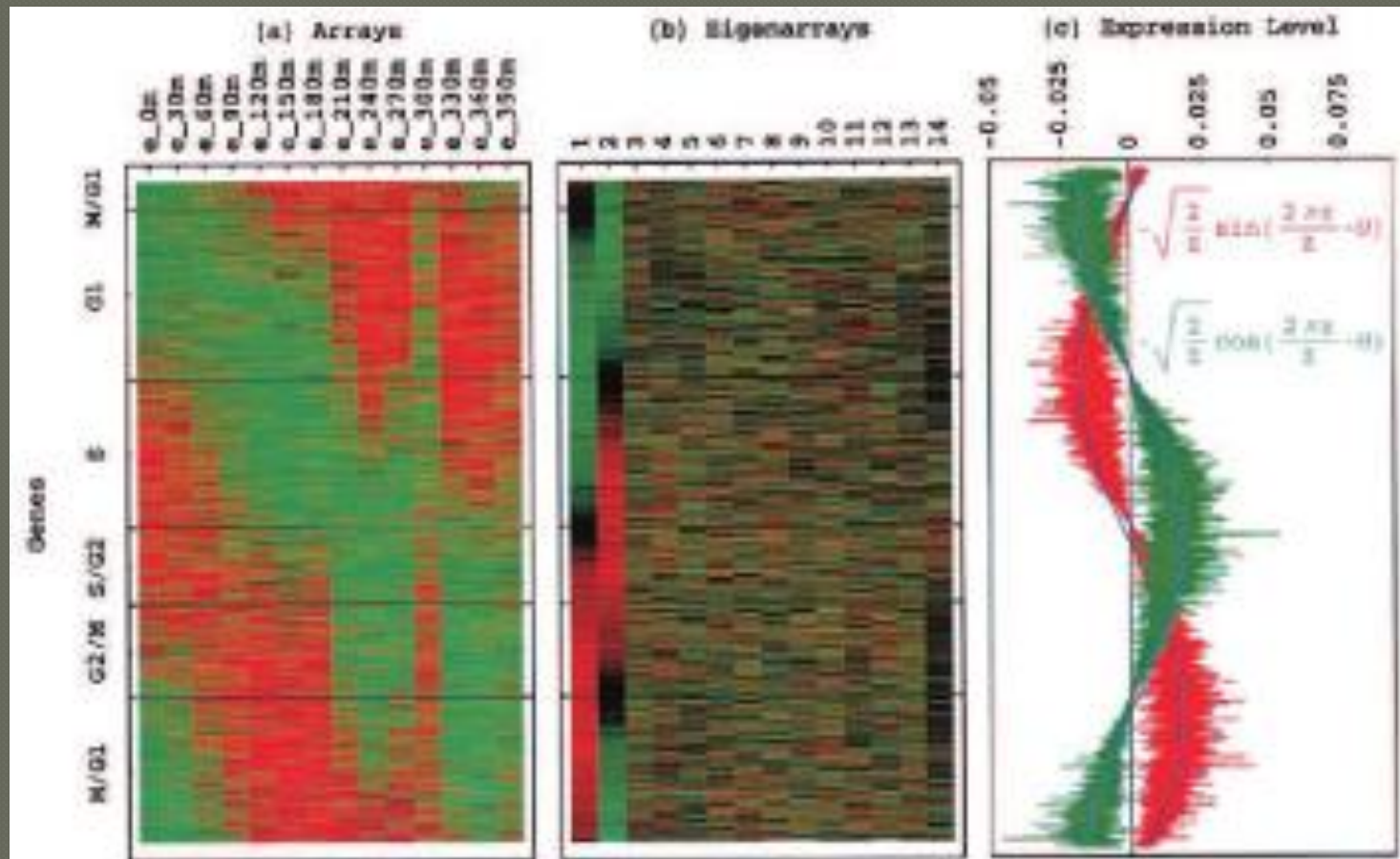
Dimensionality reduction

PROBE	SIGNAL[D1]	VAR[D1_Tcc]	SIGNAL[D2]	VAR[D2_Tcc]	SIGNAL[D4]	VAR[D4_Tcc]	SIGNAL[D5]	VAR[D5_Tcc]
100002	172.8246	0.06	295.0775	0.04	263.3923	0.05	215.4909	0.05
100003	0.7632	2.19	0.155	2.04	0.8	0.29	0.0727	1.15
100027	0.1667	5.39	0.1163	3.47	0.3846	0.54	0.3545	0.2
100036	0.4035	4.86	0.7364	1.36	0.5846	0.89	0.6273	0.44
100037	36.6842	0.06	58.1473	0.04	29.8231	0.06	18.5091	0.05
100039	3.2719	0.14	12.0775	0.04	11.7308	0.07	14.3636	0.04
100044	1.5702	1.77	0.1938	0.4	0.2385	0.58	0.1091	1.59
100045	0.6228	5.52	0.7054	1.16	0.6462	1228.36	0.3	1.73
100051	0.6491	1.01	0.1783	3.26	0.0923	0.7	0.1364	1.04
100052	0.2544	1.07	0.093	0.96	0.2692	11.31	0.2273	0.83
100057	1.0526	1.13	2.2093	0.29	3.5615	0.1	2.0091	0.24
100058	60.6579	0.06	165.8062	0.04	126.6538	0.06	24.1727	0.05
100060	0.8684	0.46	0.2016	149.6	0.2769	1.73	0.1455	2.51
100062	2.0702	0.75	1.6047	6.37	1.4462	3.23	0.4091	0.91
100064	0.2193	3.72	0.2248	0.26	0.2538	1.81	0.2545	0.75
100079	209.4561	0.04	540.1938	0.04	487.0308	0.05	769.0546	0.04
100089	2.0877	0.22	3.6977	0.12	2.0	0.26	4.1273	0.05
100093	0.4825	0.9	0.1473	1.3	0.3462	0.47	0.0818	0.75
100095	0.9561	0.52	0.5659	1.1	0.5231	0.52	0.1455	0.64
100100	18.8509	0.05	36.4264	0.04	28.6846	0.05	44.3182	0.04
100102	0.9035	0.26	0.2326	1.03	0.3538	1.34	0.0727	0.72
100103	0.2018	4.24	0.1705	0.89	0.1769	2.14	0.1	0.5
100105	0.4035	3.64	0.3023	0.57	0.0538	1.37	0.1909	0.55
100111	0.386	0.71	0.1783	1.84	0.1462	0.91	0.1273	0.56
100117	0.3158	19.15	0.186	24.56	0.3	152.31	0.0909	1.24
100120	12.307	0.07	32.2403	0.04	26.5615	0.05	24.8364	0.05
100130	35.7719	0.04	68.5039	0.04	54.9154	0.05	32.5818	0.04
100137	256.4386	0.06	568.1396	0.04	414.0923	0.05	173.9273	0.05
100145	1.4035	0.22	1.0853	0.16	0.6308	0.21	1.4909	0.1

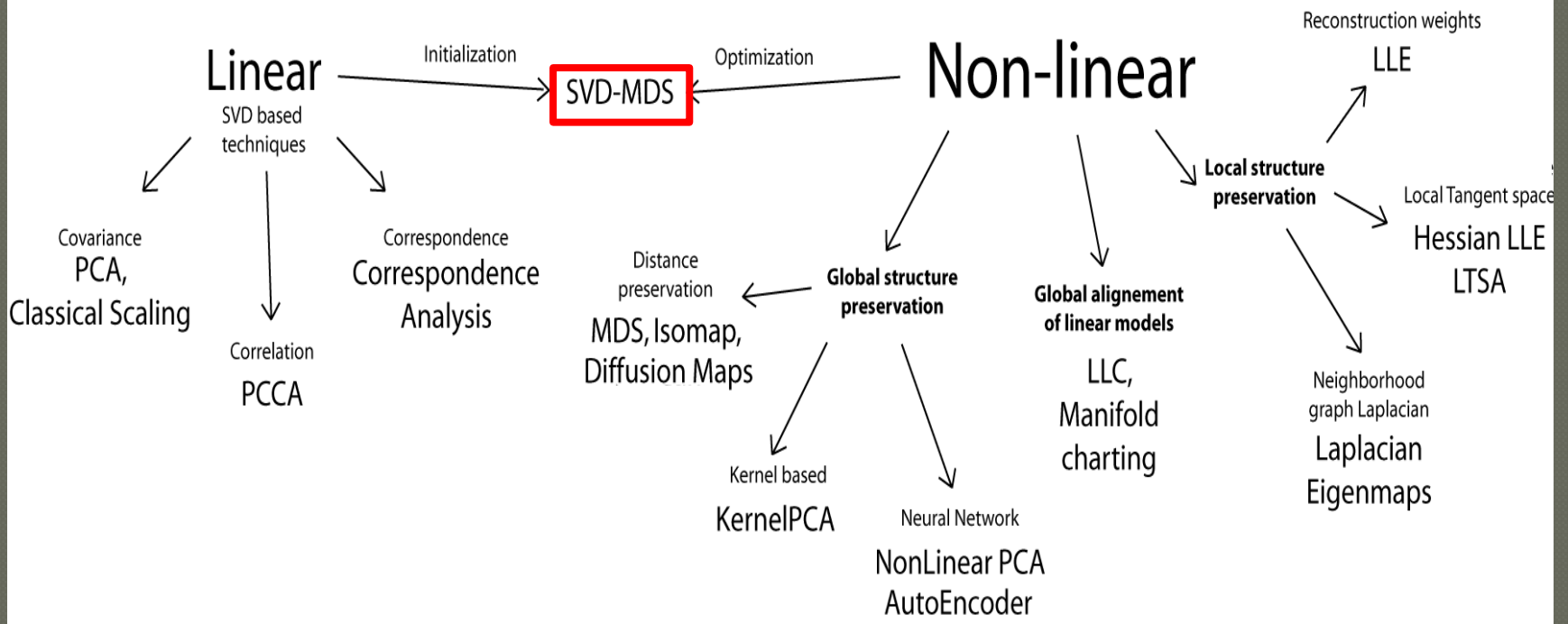
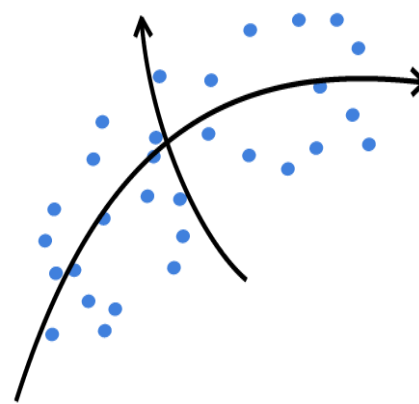
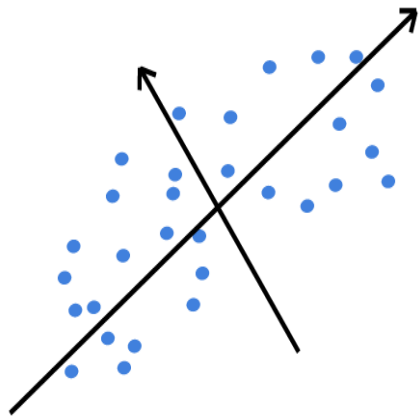


PROBE	axe 1	axe 2	axe 3
100002	-0,005761155	-0,0196512	0,0119491
100003	3,33E-06	-7,64E-06	-3,41E-05
100027	1,56E-05	1,68E-05	-1,35E-05
100036	-2,15E-05	5,47E-05	7,82E-05
100037	-6,07E-04	-0,0032565	-3,98E-04
100039	-1,81E-04	-8,52E-04	7,59E-04
100044	-7,69E-06	1,92E-05	-4,63E-05
100045	-1,48E-06	2,01E-05	-1,08E-05
100051	2,72E-05	1,03E-05	-1,29E-05
100052	2,45E-05	2,98E-05	-4,44E-07
100057	-3,12E-05	9,81E-06	8,40E-05
100058	-0,005544852	-0,0014884	3,56E-05
100060	-4,28E-06	2,66E-05	-2,50E-05
100062	-1,87E-05	1,36E-04	8,07E-05
100064	1,16E-05	1,48E-05	-1,36E-06
100079	-0,008017877	-0,052928	0,0132812
100089	-3,44E-05	-7,79E-05	-6,46E-05
100093	1,21E-05	1,12E-05	-3,78E-05
100095	-2,46E-06	2,76E-05	-4,02E-05
100100	-4,15E-04	-1,19E-04	2,03E-04
100102	4,28E-06	1,75E-05	-3,19E-05
100103	8,46E-06	1,68E-05	1,43E-05
100105	3,09E-05	5,10E-05	5,02E-05
100111	8,07E-06	1,77E-05	-6,58E-06
100117	9,05E-06	3,10E-05	-5,17E-05
100120	-8,48E-04	-0,0027472	5,07E-04
100130	-0,001304086	-0,0035659	3,79E-04
100137	-0,018473712	3,53E-04	0,015201
100145	1,55E-05	-7,17E-06	-3,92E-05

Applications of dimensionality reduction techniques



Alter et al., PNAS, 2000

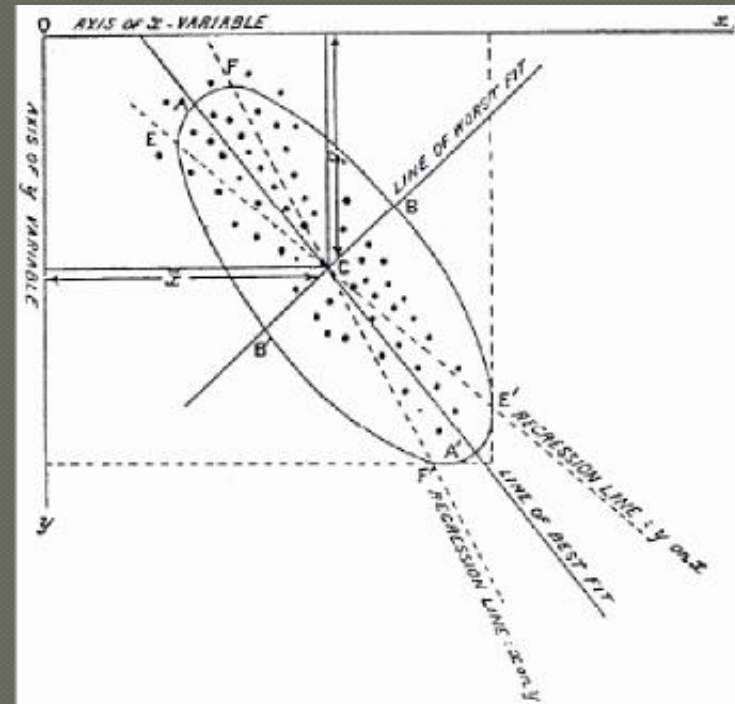
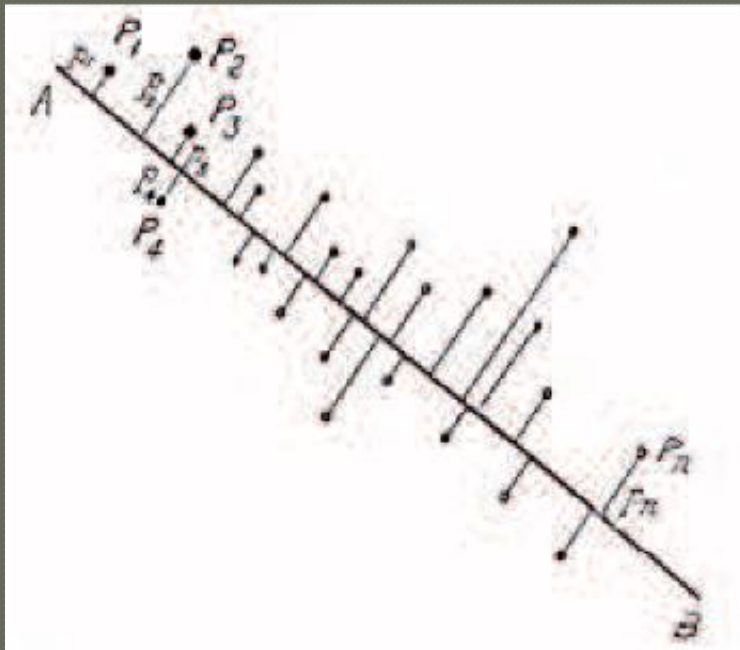


Bécavin et al., Expert Review of Molecular Diagnostics, 2011

Principal Component Analysis

In many physical, statistical, and biological investigations it is desirable to represent a system of points in a plan, three, or higher dimensioned space by the "best-fitting" straight line or plane

K. Pearson, Philosophical Magazine, 1901



Different measures for different linear dimensionality reduction techniques

Covariance (PCA):

$$\text{Cov}(x_i, x_j) = E[(x_i - E[x_i])(x_j - E[x_j])]$$

$$\text{Cov}(x_i, x_j) = \frac{1}{n} \sum_{k=1}^n x_i^k x_j^k$$

$$\text{CovMatrix} = \frac{1}{n} X^t X$$

Correlation (PCCA):

$$\text{Cov}(x_i, x_j) = \frac{\frac{1}{n} \sum_{k=1}^n x_i^k x_j^k}{\sigma(x_i)\sigma(x_j)}$$

$$\tilde{X} = \left(\frac{x_{i,j}}{\sigma(j)} \right)$$

Euclidean distance (Classical scaling):

$$d(x^i, x^j)^2 = \sum_k (x_k^i - x_k^j)^2$$

$$XX^t = -\frac{1}{2} H \begin{pmatrix} d_{11}^2 & d_{12}^2 & \vdots \\ d_{21}^2 & \ddots & \vdots \\ \dots & \dots & d_{nn}^2 \end{pmatrix} H$$

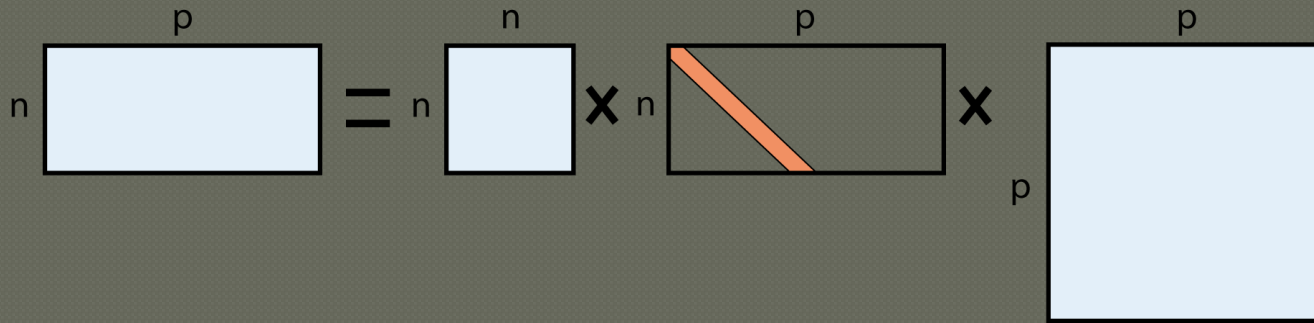
$$\text{with } H = I - \frac{1}{n} 11^t, \text{ and } 1 = (1, 1, \dots, 1)^t$$

Chi-square distance
(correspondence analysis):

$$\chi^2(x^i, x^j)^2 = \sum_k \left(\frac{x_k^i}{\sqrt{W \sum_l x_k^l \cdot \sum_l x_l^i}} - \frac{x_k^j}{\sqrt{W \sum_l x_k^l \cdot \sum_l x_l^j}} \right)^2$$

$$\text{with } W = \sum_k \sum_l x_l^k$$

Singular Value Decomposition



$$X = U S V^t$$

with

$$s_1 > s_2 > \dots > s_{n-1} > 0$$

Inner product matrix

$$X X^t = U \lambda U^t$$

Outer product matrix

$$X^t X = V \lambda V^t$$

It is easy to demonstrate that inner and outer product matrices have the same eigenvalues, which are linked to singular values

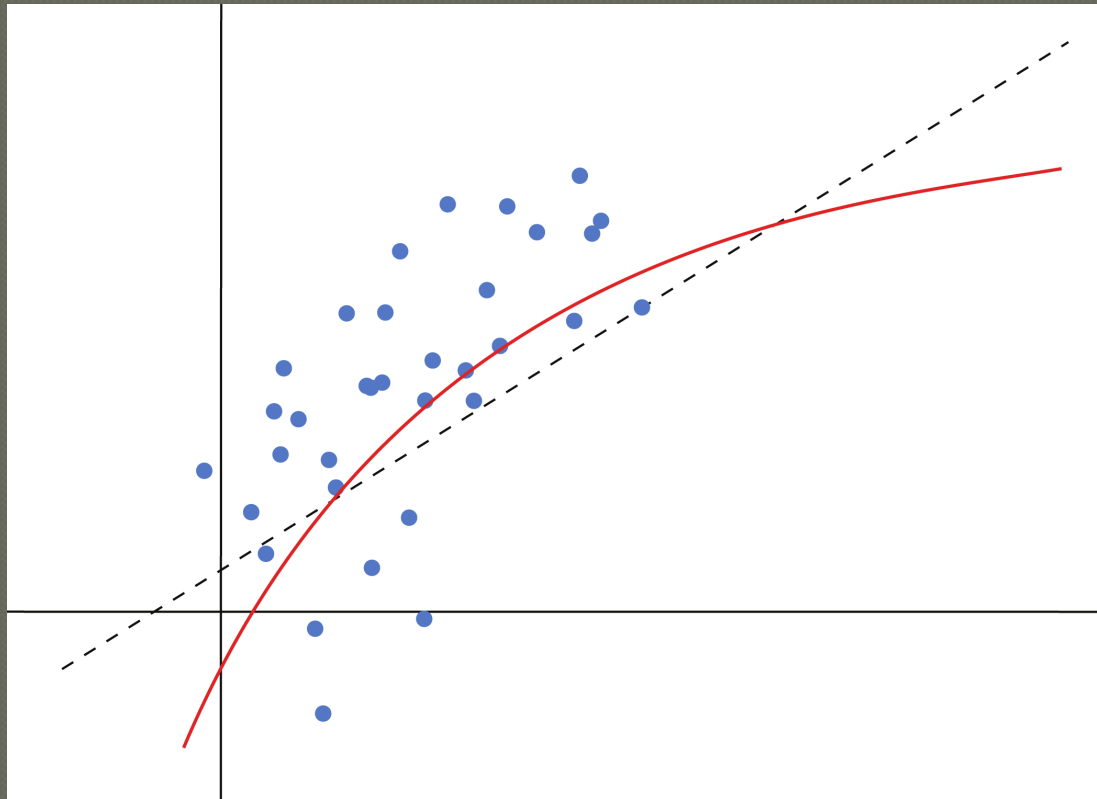
$$s_i^2 = \lambda_i$$

From line to curve: Non-linear PCA

PCA
search for the “best-fitting” line

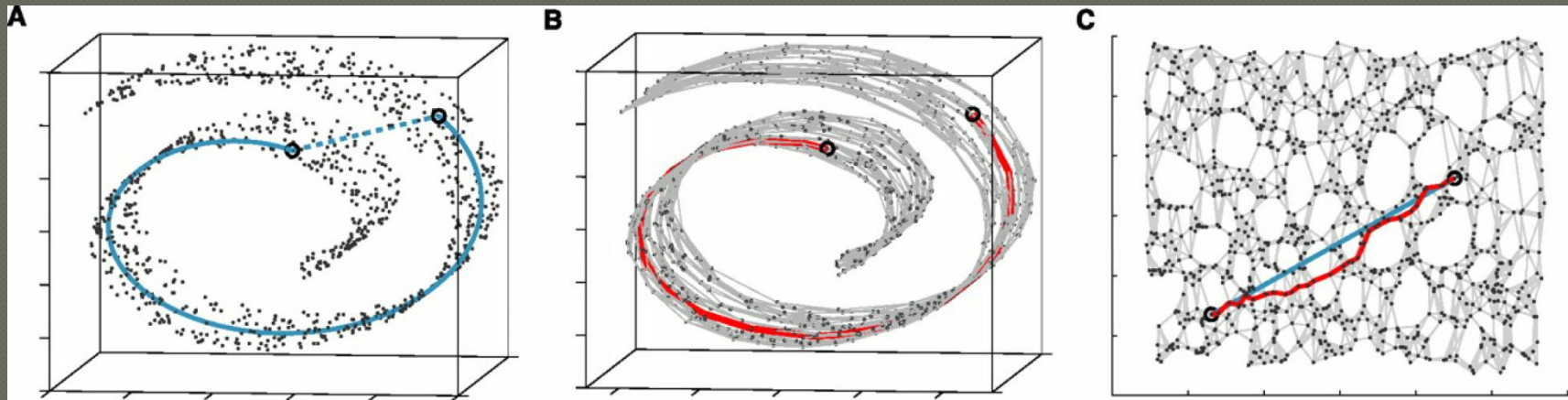


Non-linear PCA
search for the principal curve



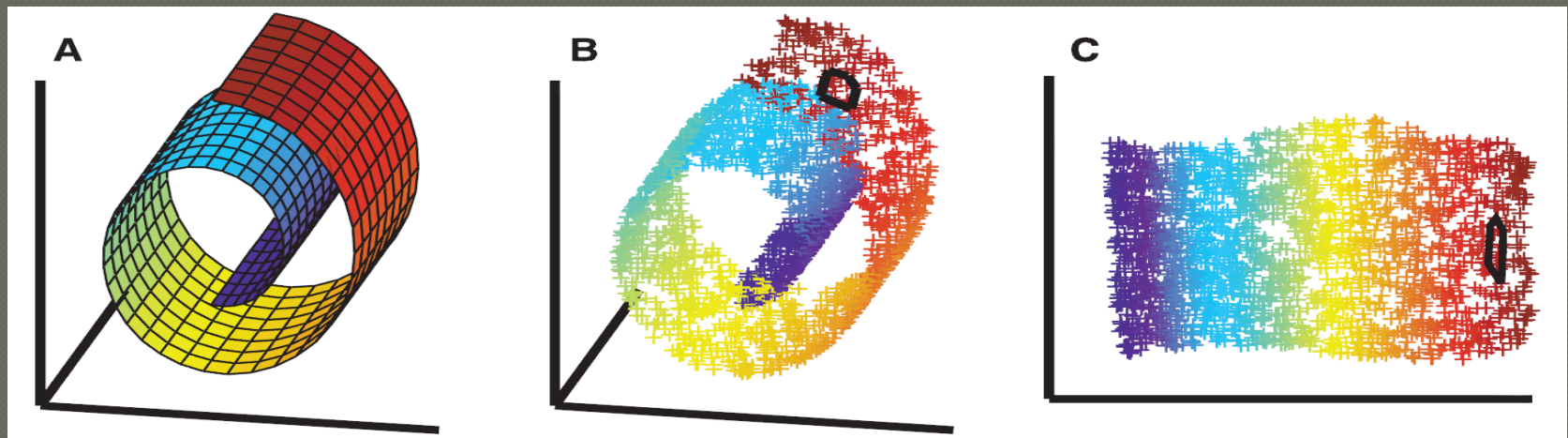
Isomap

Tenenbaum et al. , Science, 2000

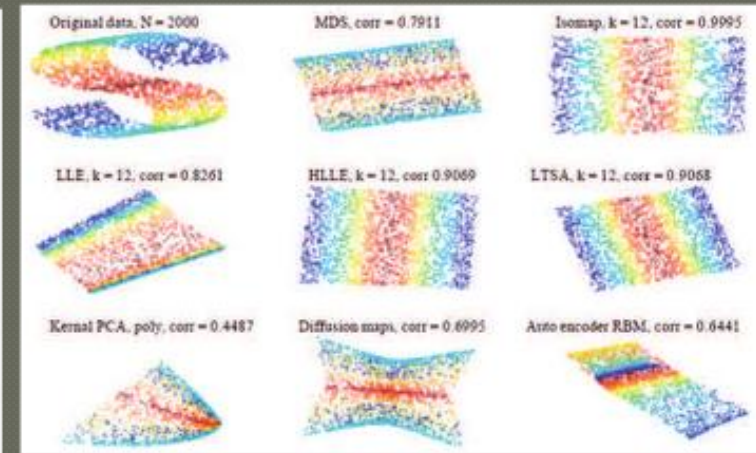
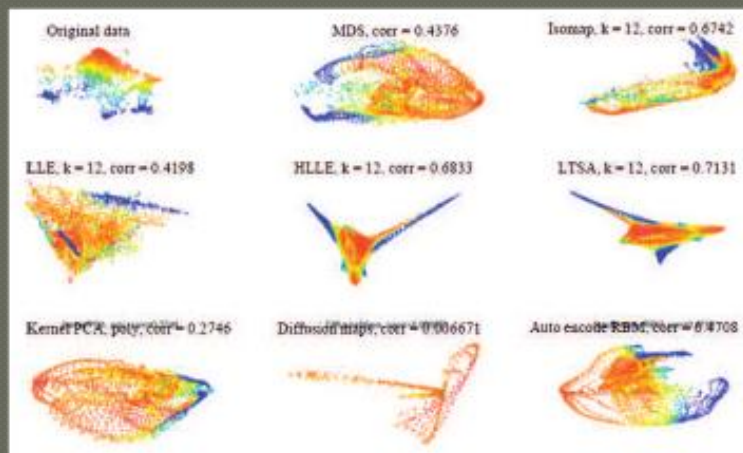
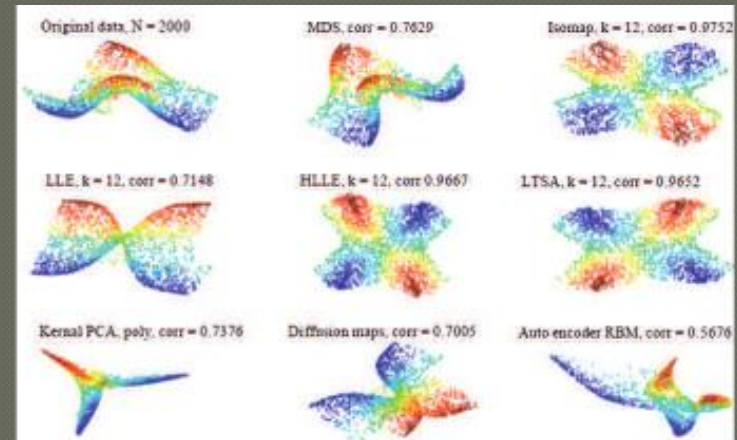
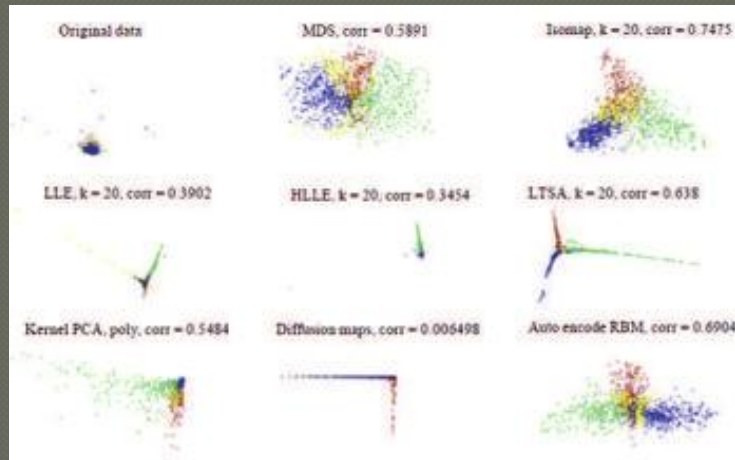


Locally Linear Embedding

Roweis et al. , Science, 2000



A great diversity of results given by each dimensionality reduction technique



Tsai F., Journal of Artificial Intelligence, 2010

Multidimensional Scaling

using Molecular Dynamics approach

-Each pair of points connected by a spring:

$$F_{spring}(x^i, x^j) = -K \cdot (\delta(x^i, x^j) - d(x^i, x^j))^2$$

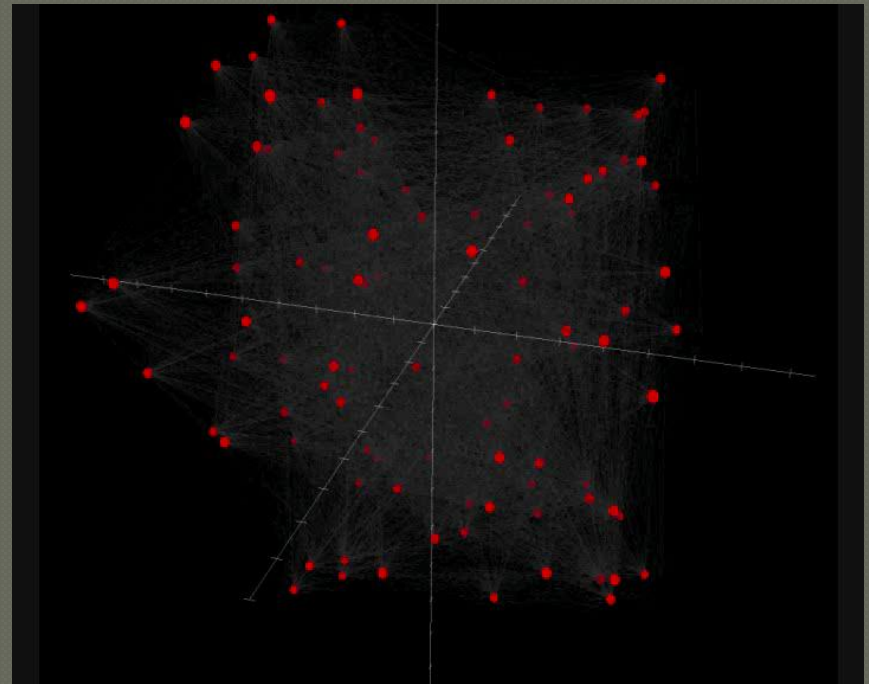
- Calculation of force for all points (non-conservative system):

$$F(x^i) = \sum_{k \neq i} F_{spring}(x^i, x^k) - \gamma \cdot mass \cdot \dot{x}^i$$

-Find new position of all points using Newton equation, and Verlet integration:

$$mass \cdot \ddot{x}^i = F(x^i)$$

$$x^i(t + \Delta t) = 2x^i(t) - x^i(t - \Delta t) + \ddot{x}^i \Delta t^2$$



$$Stress = \sqrt{\frac{\sum_i \sum_j (\delta(i, j) - d(i, j))^2}{\sum_i \sum_j (d(i, j))^2}}$$

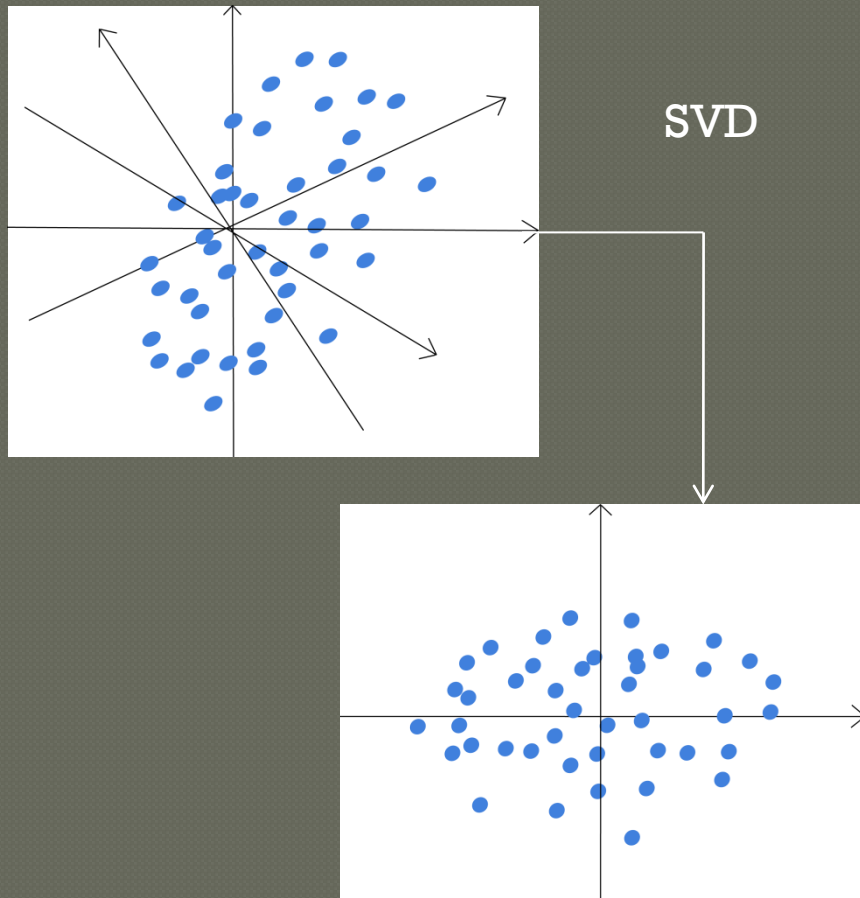
Index

- Review of dimensionality reduction techniques

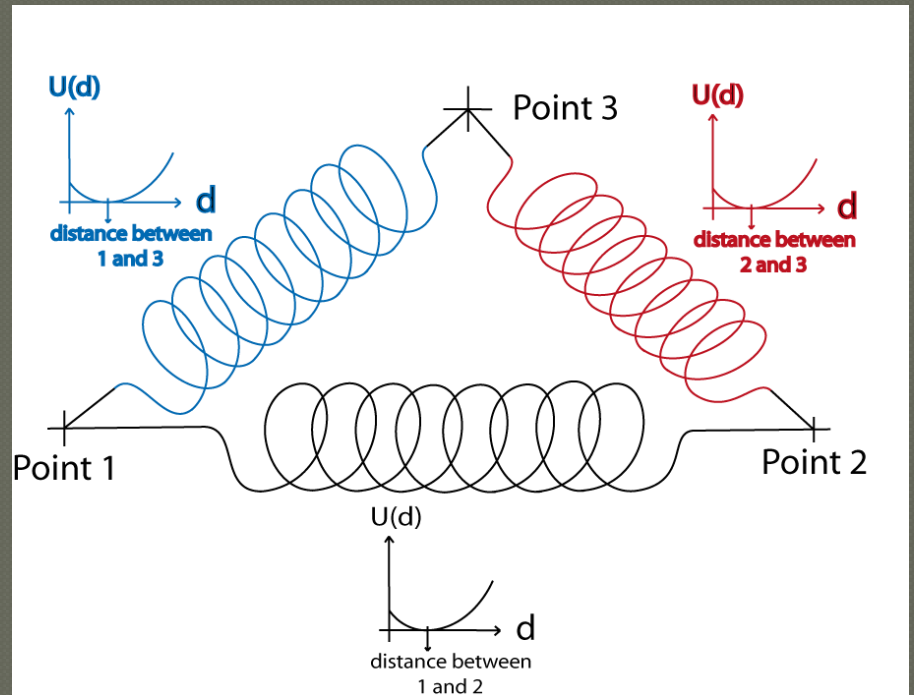
- SVD-MDS

- Pathway network analysis software
- 1st Application: Cerebral Malaria characterization
- 2nd Application: Treg characterization

Multidimensional Scaling initialized by Singular Value Decomposition

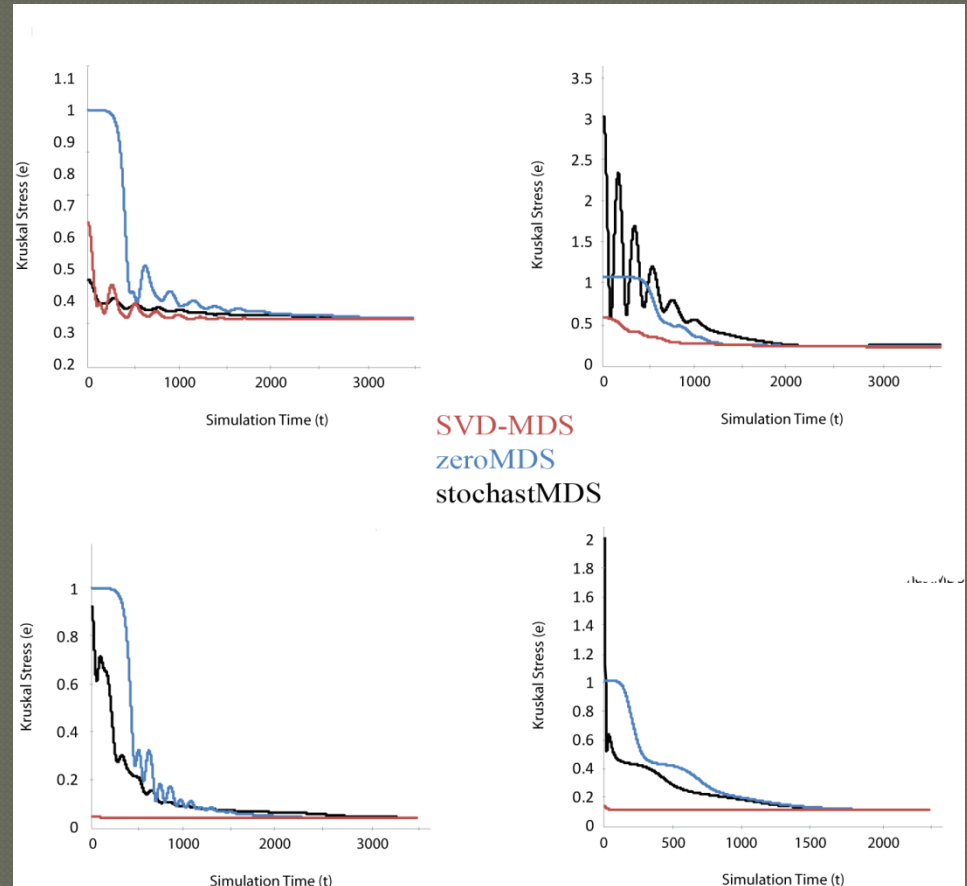


MDS using Spring analogy

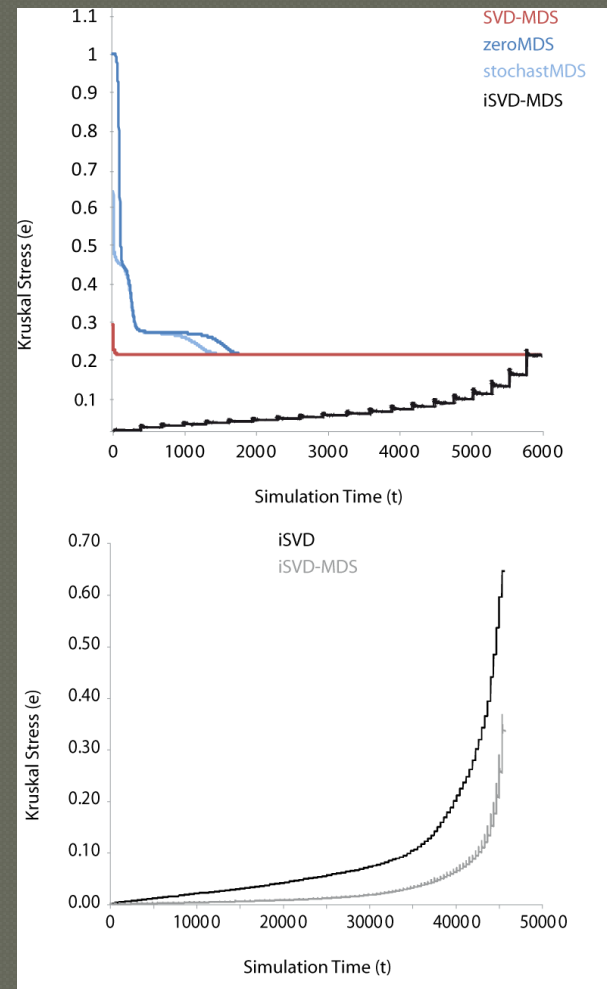
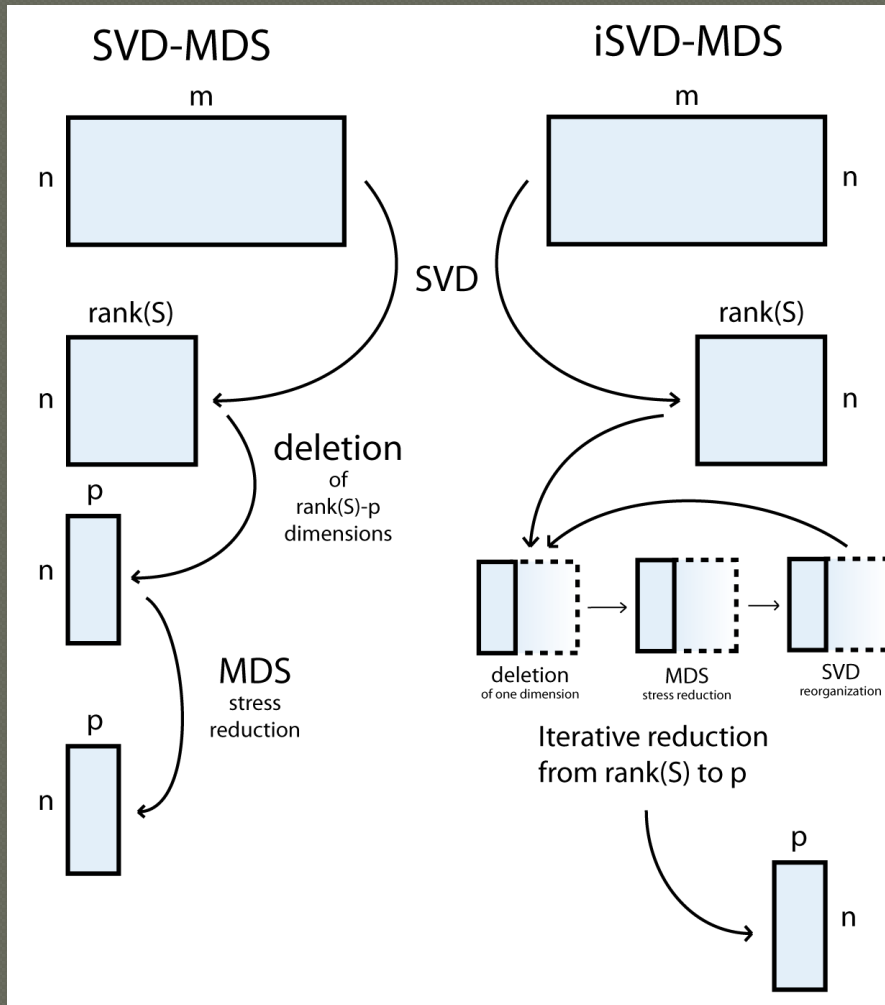


Comparison of different initialization strategies

ID	Dataset Name	No. of Instances	No. of Variables
d1	96Cell	96	32878
d2	96Cell_T	96	1553
d3	Iris	150	4
d4	Wine	178	13
d5	Stochast 200	200	50
d6	CCYier	516	12
d7	Pima	768	9
d8	96Cell_T transposed	1553	96
d9	Secom	1567	590
d10	Ozone	2565	72
d11	Stochast 3000	3000	300
d12	Ecoli	4288	7
d13	Wave	5000	22



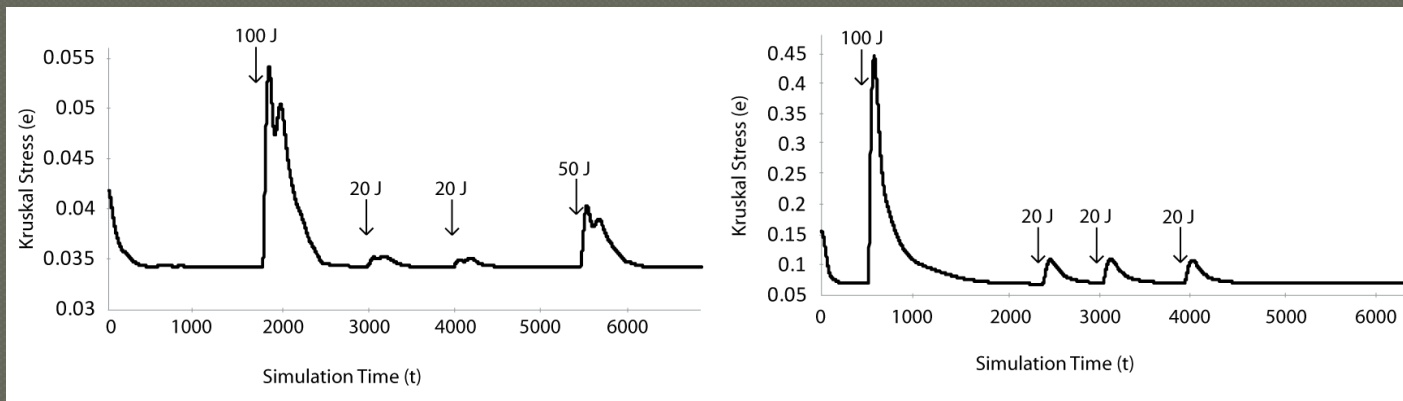
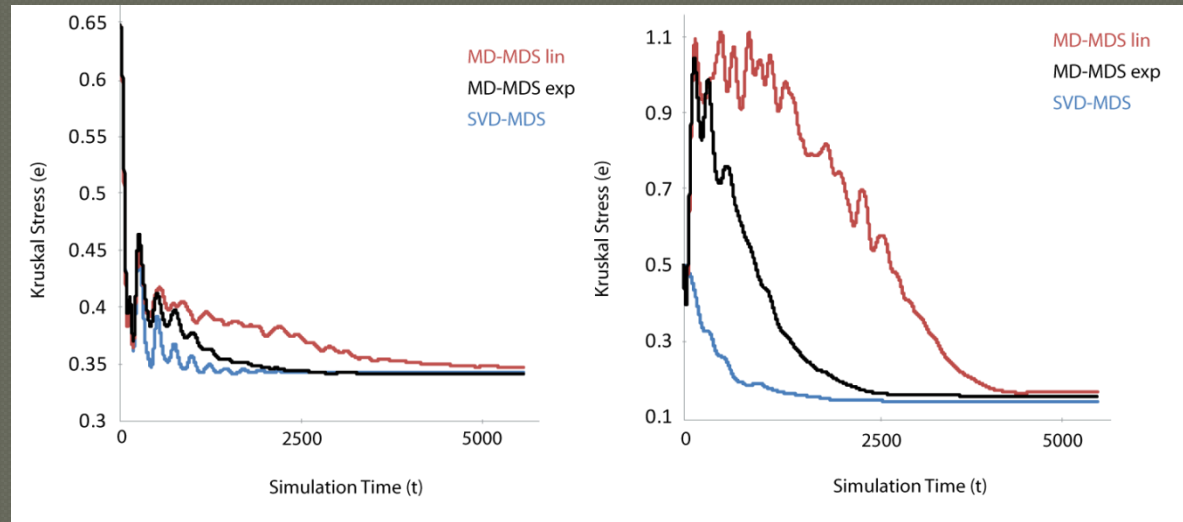
Iterative SVD-MDS



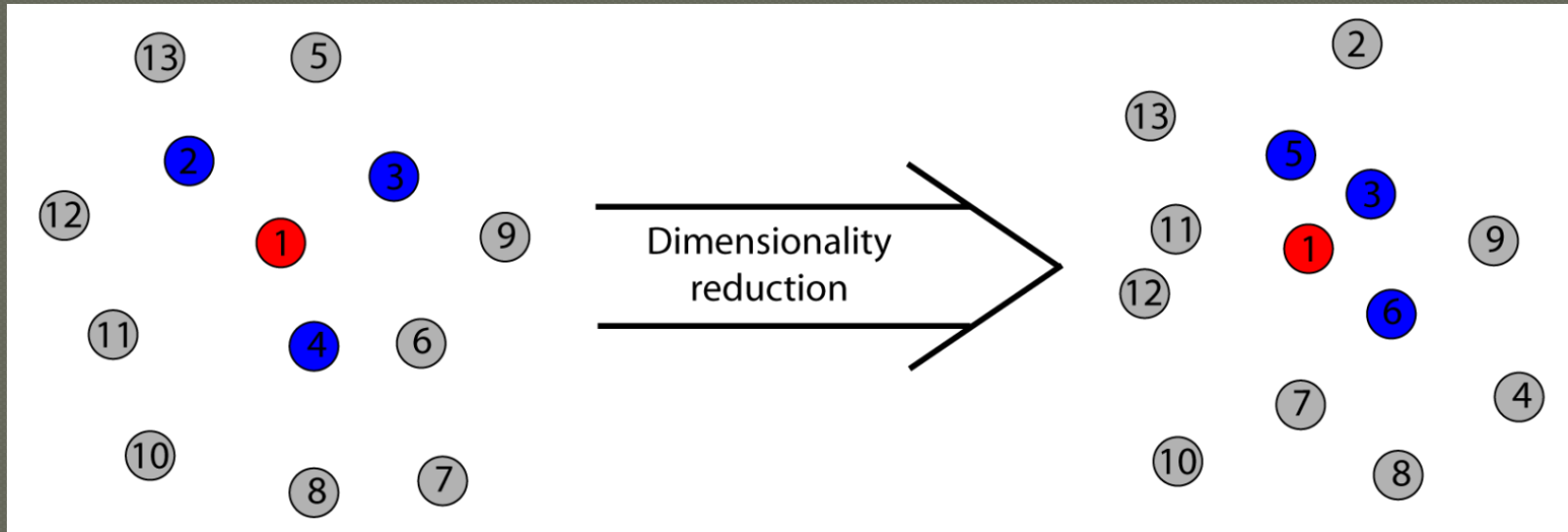
Adding stochasticity to avoid local minima ?

Stochastic force

$$F_{stoch}(x^i) = -T * s(t)$$



Entourage parameter for evaluating local deformation



$$Ent_k = \frac{\sum_{i=1}^n G_i}{G}$$

with

$$G_i = \text{card}(N_i^{\text{ref}} \cap N_i^{\text{new}})$$

and

$$G = nk$$

SVD-MDS

- The use of SVD is the best initialization strategy for MDS;
- Iterative dimensionality reduction does not improve the optimization;
- Adding stochastic also does not improve the process;
- Using parameter for local change assessment we prove that our representation is generally more accurate than the one obtain with our other MDS algorithm.

Bécavin et al., Bioinformatics, *Submitted*

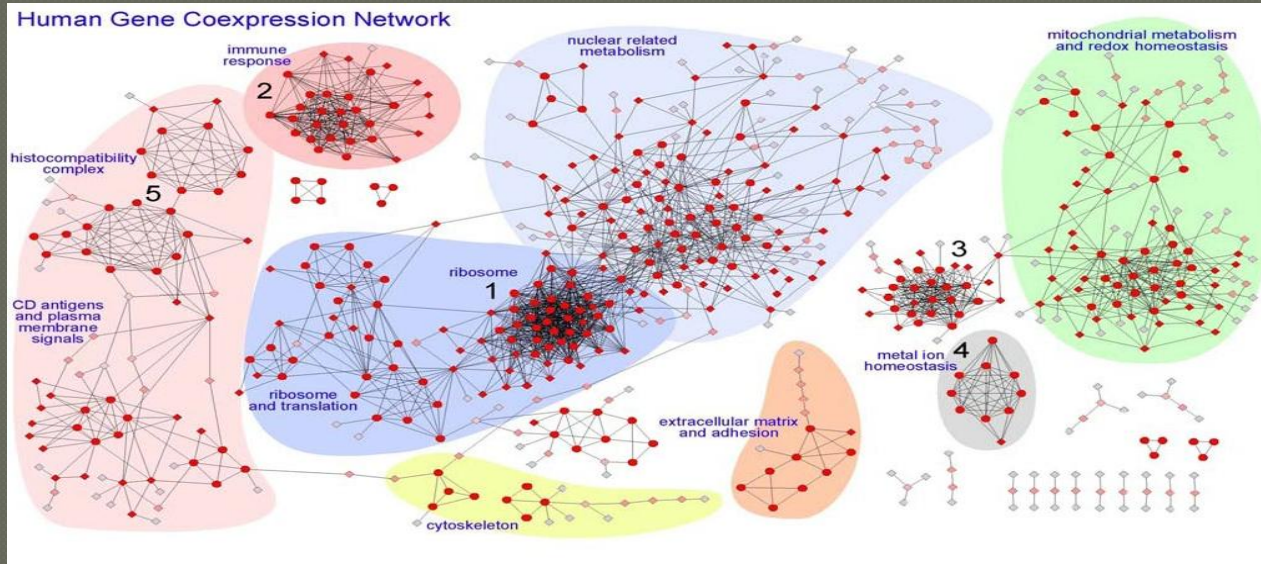
Index

- Review of dimensionality reduction techniques
- SVD-MDS

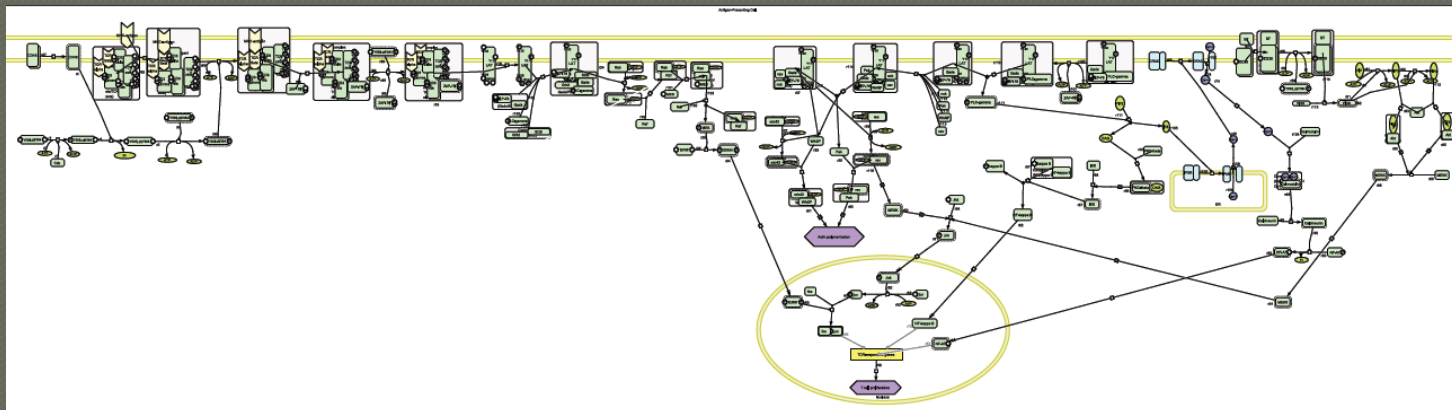
• Pathway network analysis software

- 1st Application: Cerebral Malaria characterization
- 2nd Application: Treg characterization

Gene expression and Pathway structure integration



Prieto et al.,
Plos One
2008



Retrieving and curation of pathways: List of species and list of reactions

XML file downloaded from PANTHER

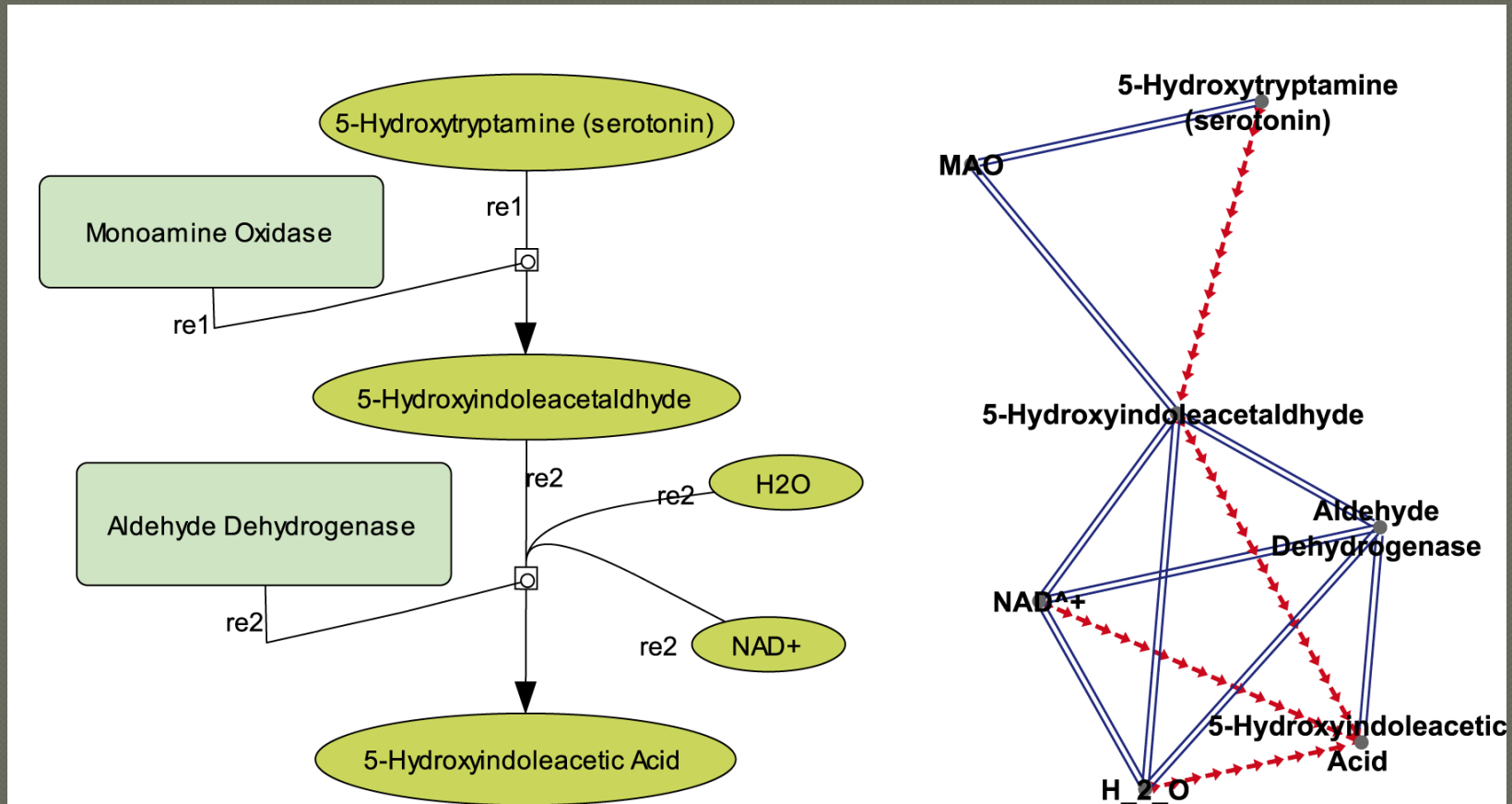
class	id	name	compartment	positionCompartment	included	LongName	Accession	Synonym	XMLName
SIMPLE_MOLECULE	s482	ADP	c5	inside		ADP	S01854	Synonym not specified	ADP
SIMPLE_MOLECULE	s305	ADP	c5	inside		ADP	S01854	Synonym not specified	ADP
PROTEIN	s425	AKT	c5	inside		Akt	P01332	PKB,Protein Kinase B	Akt
SIMPLE_MOLECULE	s481	ATP	c5	inside		ATP	S01851	Synonym not specified	ATP
SIMPLE_MOLECULE	s304	ATP	c3	inside		ATP	S01851	Synonym not specified	ATP
PHENOTYPE	s271	Actin polym	c5	inside		Actin polym	U02632	Synonym not specified	Actin polym
PROTEIN	s337	B7	c2	transmembrane		B7	P01337	Synonym not specified	B7
PROTEIN	s320	CD28	c5	transmembrane		CD28	P01313	Synonym not specified	CD28
PROTEIN	s386	CD45	c5	transmembrane		CD45	P01329	Leukocyte common antig	CD45
PROTEIN	s19	CD45	c5	transmembrane		CD45	P01329	Leukocyte common antig	CD45
PROTEIN	s493	CRAC	c5	transmembrane		CRAC	P01328	Synonym not specified	CRAC
ION	s500	Ca ²⁺	default	inside		Ca ⁺⁺	U02631	Synonym not specified	Ca ⁺⁺
ION	s494	Ca ²⁺	c5	inside		Ca ⁺⁺	U02631	Synonym not specified	Ca ⁺⁺
ION	s445	Ca ²⁺	c4	inside		Ca ⁺⁺	U02631	Synonym not specified	Ca ⁺⁺
PROTEIN	s495	Calcineurin	c5	inside		Calcineurin	P01315	Synonym not specified	Calcineurin
PROTEIN	s294	Calmodulin	c5	inside		Calmodulin	P01305	Synonym not specified	Calmodulin
COMPLEX	s334	Complex;PIP	c5	inside		Akt;PIP2;	Long name n U05532	Synonym not specified	Complex;Akt;
COMPLEX	s335	Complex;PIP	c5	inside		Akt;PIP3;	Long name n U05543	Synonym not specified	Complex;Akt;
COMPLEX	s344	Complex;CD	c5	transmembrane		B7;CD28;	Long name n U05549	Synonym not specified	Complex;B7;
COMPLEX	s343	Complex;CD	c5	transmembrane		B7;CD28;	Long name n U05553	Synonym not specified	Complex;B7;
COMPLEX	s342	Complex;CD	c5	transmembrane		B7;CD28;	Long name n U05554	Synonym not specified	Complex;B7;

Species list for each pathway

type	id	reactants	products	modifiers	reversible
HETERODIMER_ASSOCIATION	r100	s406,s204,s411,s309,	s442,		false
HETERODIMER_ASSOCIATION	r101	s490,s415,	s449,		false
DISSOCIATION	r102	s449,	s247,s490,	s487,	false
TRANSPORT	r103	s500,	s494,	s493,	false
HETERODIMER_ASSOCIATION	r104	s494,s294,	s451,		false
STATE_TRANSITION	r105	s452,	s452,	s281,	false
STATE_TRANSITION	r106	s445,	s494,	s452,	false
STATE_TRANSITION	r107	s464,s481,	s461,s482,	s486,	false
DISSOCIATION	r110	s461,	s419,s455,		false
DISSOCIATION	r111	s492,	s282,s281,	s455,	false
HETERODIMER_ASSOCIATION	r112	s425,s330,	s335,		false
HETERODIMER_ASSOCIATION	r113	s419,s408,s485,s484,s4	s471,		false
DISSOCIATION	r114	s471,	s477,s485,s484,		false
STATE_TRANSITION	r115	s498,	s498,	s344,	false
KNOWN_TRANSITION_OMITTE	r116	s491,	s496,		false
STATE_TRANSITION	r16	s4,	s406,	s437,	false
STATE_TRANSITION	r24	s242,s488,	s243,s489,	s442,	false
HETERODIMER_ASSOCIATION	r25	s243,s487,	s490,		false
STATE_TRANSITION	r28	s290,	s346,	s347,	false
STATE_TRANSITION	r30	s290,	s346,	s347,	false

Reactions list for each pathway

Obtaining the list of reactions



Different types of networks that can be constructed

Selection of species and reactions \longrightarrow Nodes and edges of the network

The screenshot displays the Global Pathway Analysis software interface. The main window shows a list of species and reactions with columns for ID, Species Name, Species Class, X, Y, Z, Color, expr, occu..., and Marg... The list includes various proteins and complexes, such as Cadherin, Receptor, Cytokine Receptor, and Myosin. The interface also features a Package Explorer on the left, a Console at the bottom, and a menu bar at the top.

ID	Species Name	Species Class	X	Y	Z	Color	expr	occu...	Marg...
<input type="checkbox"/>	411 Cadherin	PROTEIN	0.0	0.0	0.0	Gray20	8.875...	189.0	1677...
<input type="checkbox"/>	2063 Receptor	PROTEIN	0.0	0.0	0.0	Gray20	3.762...	107.0	402.6...
<input type="checkbox"/>	1023 Cytokine Receptor	PROTEIN	0.0	0.0	0.0	Red	12.93...	100.0	1293...
<input checked="" type="checkbox"/>	930 Complex;hormone;Receptor;	COMPLEX	0.0	0.0	0.0	Green	0.036...	98.5	3.552...
<input checked="" type="checkbox"/>	881 Complex;beta-Catenin;Cadherin;	COMPLEX	0.0	0.0	0.0	Green	0.011...	95.5	1.114...
<input checked="" type="checkbox"/>	963 Complex;p120;Cadherin;	COMPLEX	0.0	0.0	0.0	Green	0.011...	94.5	1.114...
<input checked="" type="checkbox"/>	516 Complex;Cytokine Receptor;Cytokine;	COMPLEX	0.0	0.0	0.0	Green	0.025...	93.0	2.398...
<input checked="" type="checkbox"/>	1682 Myosin	PROTEIN	0.0	0.0	0.0	Red	18.65...	93.0	1734...
<input checked="" type="checkbox"/>	2612 hormone	PROTEIN	0.0	0.0	0.0	Gray20	3.703...	90.0	333.2...
<input checked="" type="checkbox"/>	1022 Cytokine	PROTEIN	0.0	0.0	0.0	Gray20	4.982...	86.0	428.5...
<input type="checkbox"/>	1139 E2	PROTEIN	0.0	0.0	0.0	Red	20.37...	79.0	1609...
<input type="checkbox"/>	2315 Tyrosine phosphatases	PROTEIN	0.0	0.0	0.0	Red	23.92...	78.0	1866...
<input type="checkbox"/>	893 Complex;beta-Catenin;alpha-Catenin;Cadherin;	COMPLEX	0.0	0.0	0.0	Green	0.013...	66.33...	0.885...
<input type="checkbox"/>	652 Complex;Myosin;Actin;	COMPLEX	0.0	0.0	0.0	Green	0.053...	65.5	3.499...
<input checked="" type="checkbox"/>	1437 Histones	PROTEIN	0.0	0.0	0.0	Gray20	6.506...	63.0	409.8...
<input checked="" type="checkbox"/>	629 Complex;JAK;Cytokine Receptor;Cytokine;	COMPLEX	0.0	0.0	0.0	Green	0.017...	62.66...	1.106...
<input checked="" type="checkbox"/>	1385 Growth Factor	PROTEIN	0.0	0.0	0.0	Gray20	2.683...	58.0	155.6...
<input checked="" type="checkbox"/>	1512 Interleukin	PROTEIN	0.0	0.0	0.0	Gray20	3.197...	55.0	175.8...
<input checked="" type="checkbox"/>	1188 Ets	PROTEIN	0.0	0.0	0.0	Gray20	2.326...	53.0	123.2...
<input checked="" type="checkbox"/>	1904 Phosphodiesterase	PROTEIN	0.0	0.0	0.0	Gray20	2.840...	53.0	150.5...
<input checked="" type="checkbox"/>	616 Complex;INF_gamma_Cytokine Receptor;	COMPLEX	0.0	0.0	0.0	Green	0.116...	51.0	5.925...

```
Console
Get colors of reactions
Finished: Ma0 reading and parsing
Uninclude the selection of species
Uninclude the selection of species
```

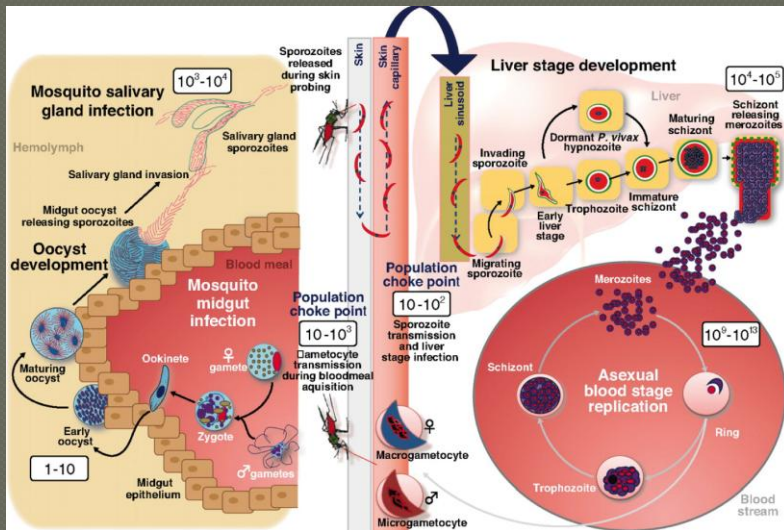

Index

- Review of dimensionality reduction techniques
- SVD-MDS
- Pathway network analysis software

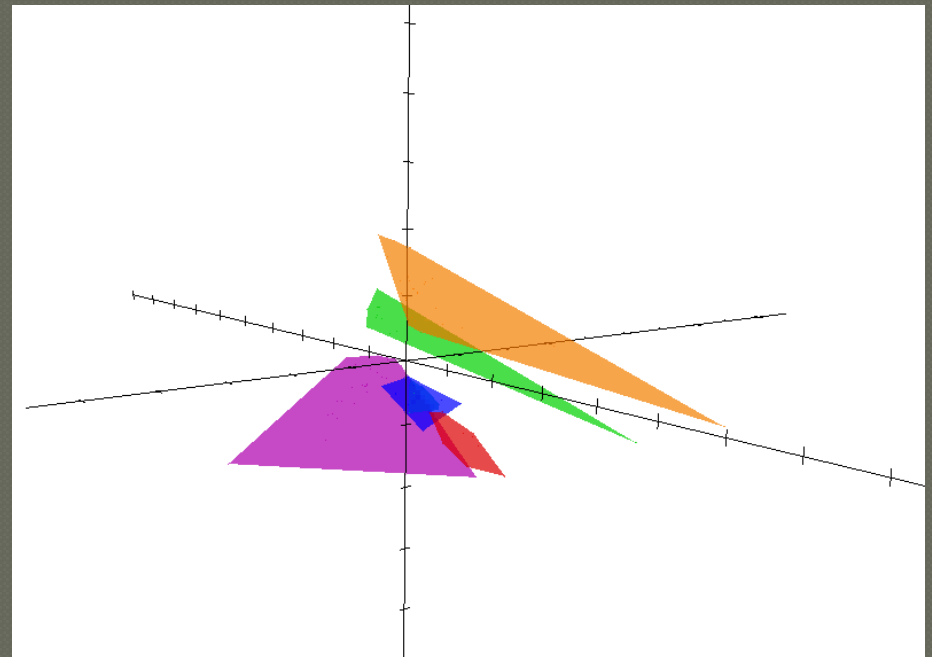
• 1st Application: Cerebral Malaria characterization

• 2nd Application: Treg characterization

Cerebral Malaria characterization using auto-antibodies and Cytokines



IgG Autoantibody to Brain Beta Tubulin III Associated with Cytokine Cluster-II Discriminate Cerebral Malaria in Central India. D. Bansal, F. Herbert, P. Liml, P. Deshpande, C. Bécavin, ... , A. Benecke, S. Pied., PLoS ONE, 2009



- Cerebral malaria (CM)
- Severe non-cerebral malaria (SM)
- Mild malaria (MM)
- Recovered cerebral malaria (ex-CM)
- Endemic controls (EC)
- Non-endemic controls (NEC)

Index

- Review of dimensionality reduction techniques
- SVD-MDS
- Pathway network analysis software
- 1st Application: Cerebral Malaria characterization
- 2nd Application: Treg characterization

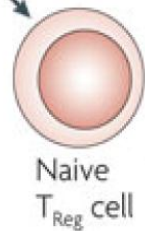
Thymus

FOXP3⁻
CD45RA⁺ CD45RO⁻
CD127⁺ CD25⁻ HLA-DR⁻
CD95⁻ CTLA4⁻



Naive
T cell

FOXP3^{low}
CD45RA⁺ CD45RO⁻
CD127^{low/-} CD25^{hi} HLA-DR⁻
CD95⁻ CTLA4⁻

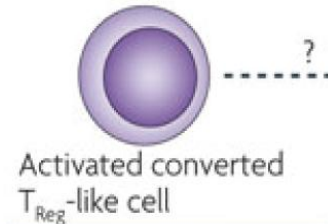


Naive
T_{Reg} cell

FOXP3^{low}
CD45RA⁻ CD45RO⁺
CD127^{low/-} CD25^{hi} HLA-DR⁺
CD95⁺ CTLA4⁺ CD69⁺ IL-2⁺
ICOS^{+/-}



Activated
T cell



Activated converted
T_{Reg}-like cell

FOXP3^{hi}
CD45RA⁻ CD45RO⁺
CD127^{low} CD25^{hi} HLA-DR⁻
CD95⁺ CTLA4⁺ Ki67⁺
ICOS^{+/-}



Effector
T_{Reg} cell

FOXP3⁻
CD45RA⁻ CD45RO⁺
CD127⁺ CD25⁺ CD62L⁺
CD95⁺ CTLA4⁺



Memory
T cell

FOXP3⁺
CD45RA⁻ CD45RO⁺
CD127^{+/-} CD25⁺ CD62L⁻
CD95⁺ CTLA4⁺
IL-17⁺ and/or IL-10⁺
ICOS^{+/-}



Terminal
effector
T_{Reg} cell

FOXP3^{hi}
CD45RA⁻ CD45RO⁺
CD127⁻ CD25^{hi} HLA-DR⁺
CD95⁺ CTLA4⁺ Ki67⁺
ICOS^{+/-}

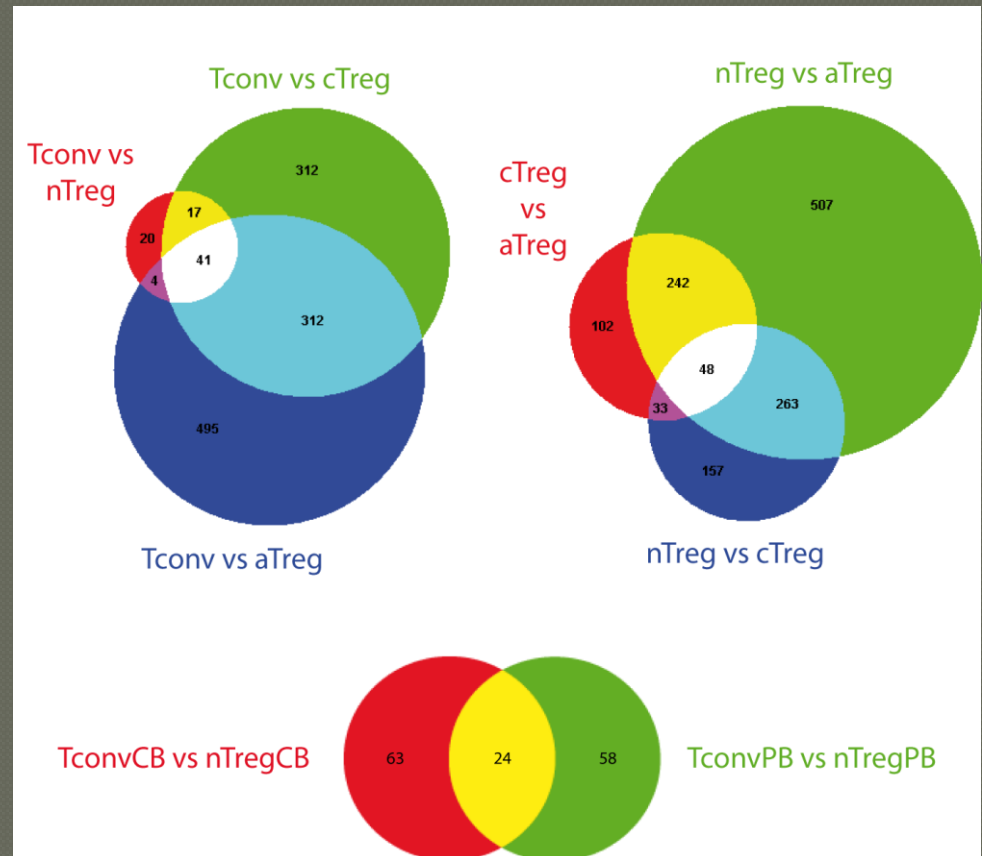
We have defined a multitude of gene sets (signatures) specific to each biological condition

Peripheral blood:

- aTreg (activated Treg)
CD4+CD25^{hi}CD127-CD45RA-HLADR+
- cTreg (cytokine emitter Treg)
CD4+CD25^{hi}CD127-CD45RA-HLADR-
- nTreg (naive Treg)
CD4+CD25^{hi}CD127-CD45RA+HLADR-
- Tconv
CD4+CD25-CD45RA+HLADR-

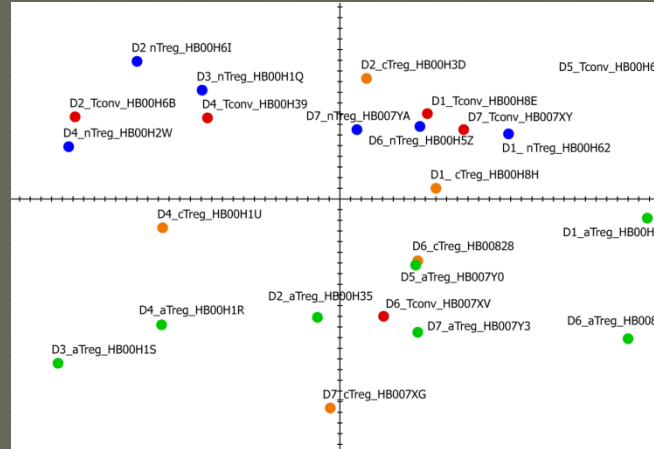
Cord Blood:

- nTreg (naive Treg)
CD4+CD25^{hi}CD127-CD45RA+HLADR-
- Tconv
CD4+CD25-CD45RA+HLADR-

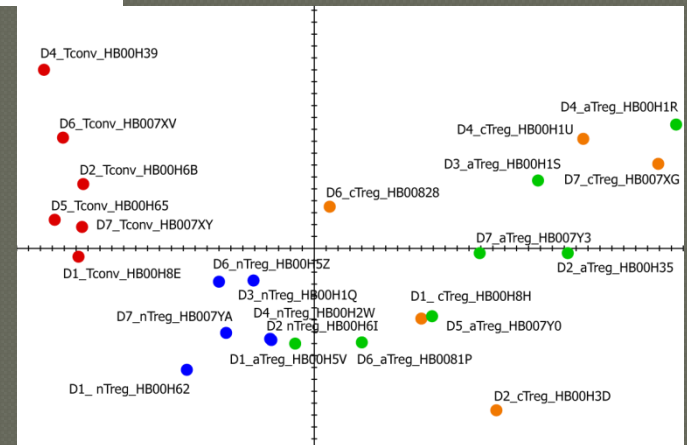
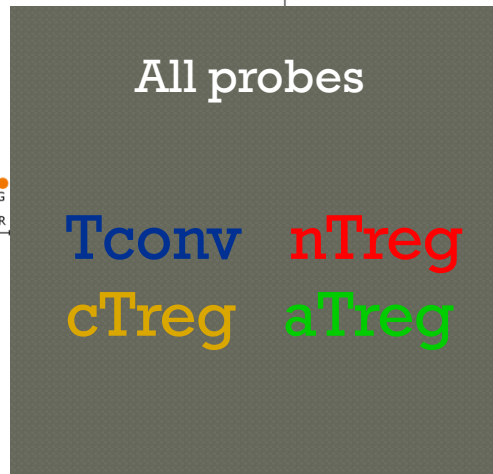
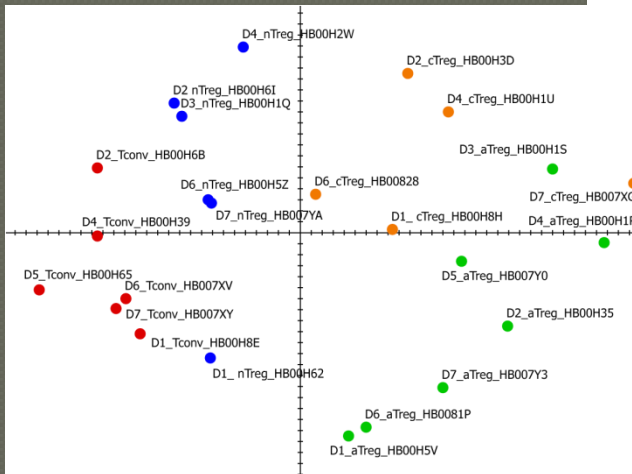


Representation (in correspondence basis) of the different Treg subsets for the different signatures constructed

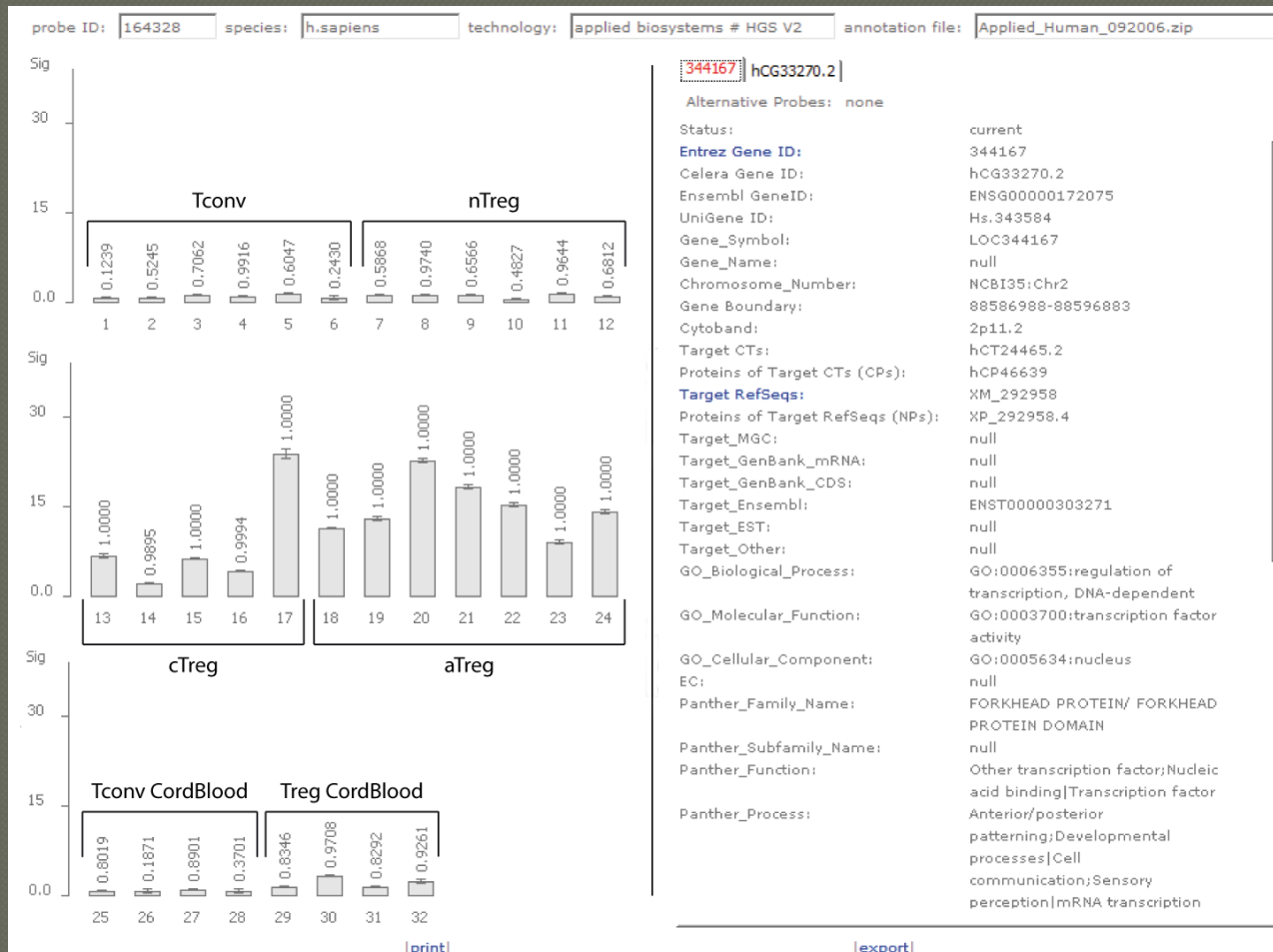
Total signature
1201 probes over-represented
and under-represented
(in comparison to Tconv)
for at least one Treg subset



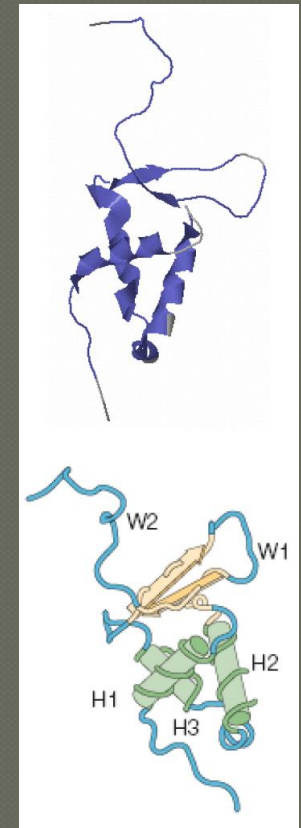
Core signature
41 probes over-represented
and under-represented
(in comparison to Tconv)
for every Treg subset



FOXL1 a new transcription factor !



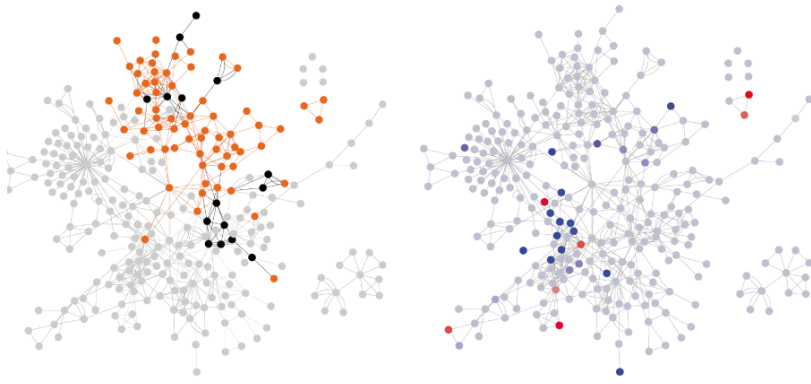
FOXL1



FOXP3

Search of the most representative pathways

Tconv VS nTreg



Multiple pathways species T cell activation

Apoptosis signaling pathway DNA replication

p53 pathway Cadherin signaling pathway

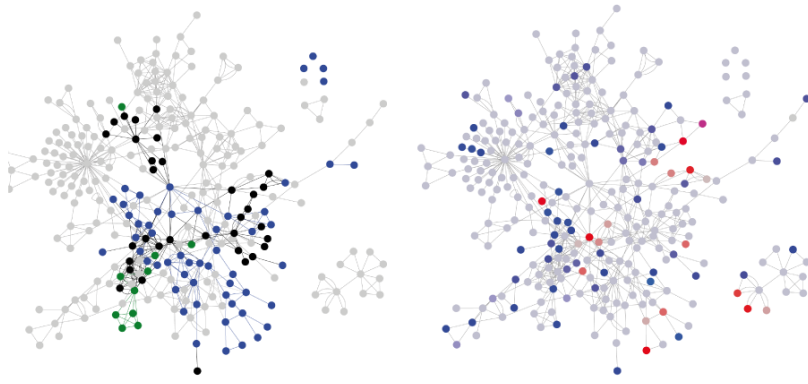
Interleukin signaling pathway

Inflammation mediated by chemokine and cytokine signaling pathway

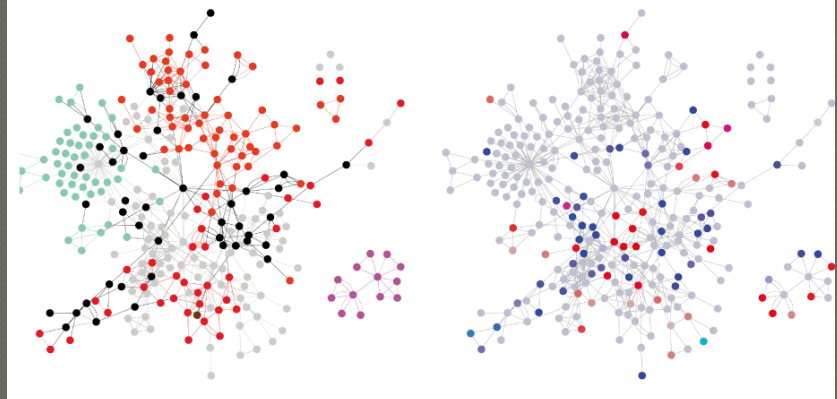
Log of fold-change



Tconv VS cTreg



Tconv VS aTreg



Conclusion-perspective

- **SVD-MDS: New MDS algorithm which is accurate and computationally efficient.**

New dimensionality reduction methods for the representation of high dimensional "omics" data. C. Becavin, A. Benecke. *Expert Review of Molecular Diagnosis*, will appear January 2011

Molecular dynamics multidimensional scaling initialized by singular value decomposition leads to computationally efficient analysis of high dimensional data. C. Becavin, N. Tchitchek, C. Mintsä-Eye, A. Lesne, A. Benecke submitted to *Bioinformatics*

- **Software developed for gene expression and Pathway structure integration**

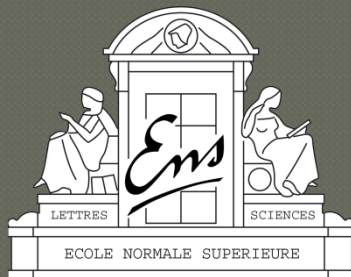
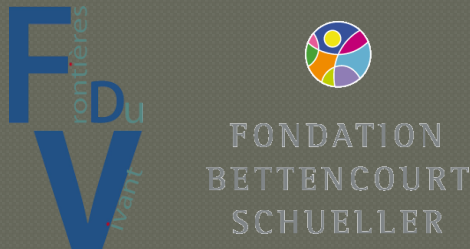
- **Three different applications to biology**

IgG autoantibody to Brain beta Tubulin III associated with cytokine Cluster-II Discriminate Cerebral Malaria in Central India. Bansal D, Herbert F, Lim P, Deshpande P, Becavin C, Guiyedi V, de Maria I, Rousselle JC, Namane A, Jain R, Cazenave PA, Mishra GC, Ferlini C, Fesel C, Benecke A, Pied S. *Plos One* 4(12) (2009)

HMGAl-dependent and independent 7SK RNA gene regulatory activity. Sebastian Eilebrecht, Christophe Becavin, Helene Leger, Bernd-Joachim Benecke, and Arndt Benecke. *RNA Biology*, In press.

Publication of the results of the study on Treg subsets with Lars Rogge..

Remerciements



- All jury members: Alain Arneodo, Lars Rogge, Sylviane Pied, Jean Marc Victor, Andrei Zinovyev.

- My Thesis supervisors: Annick Lesne, Arndt Benecke.

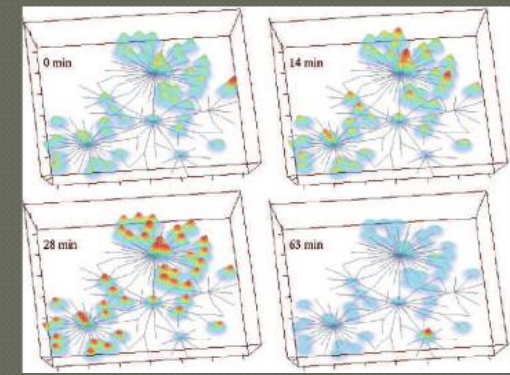
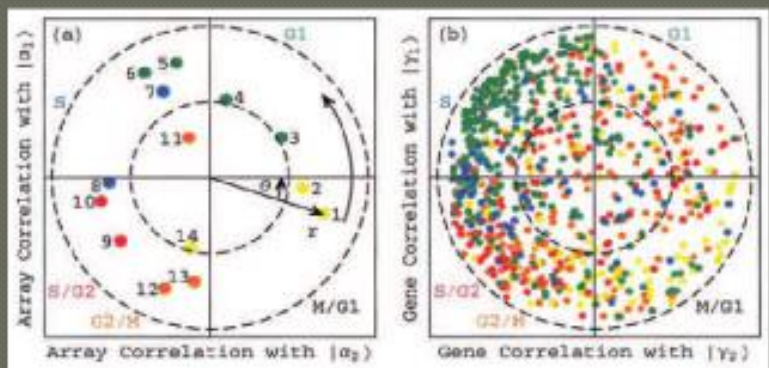
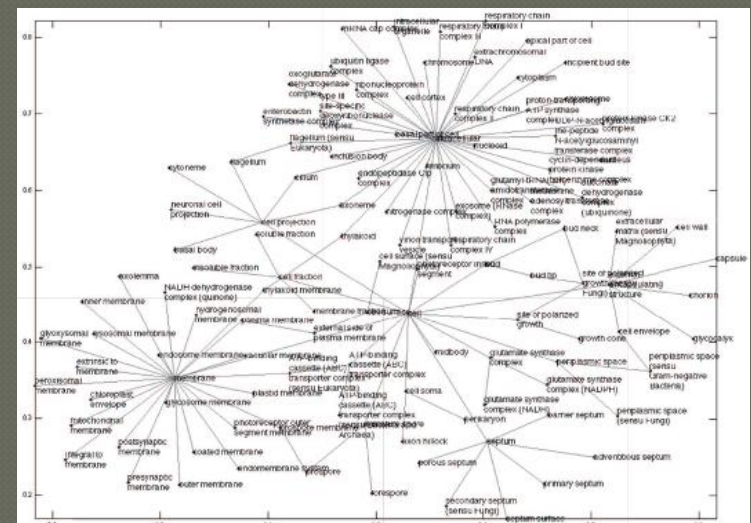
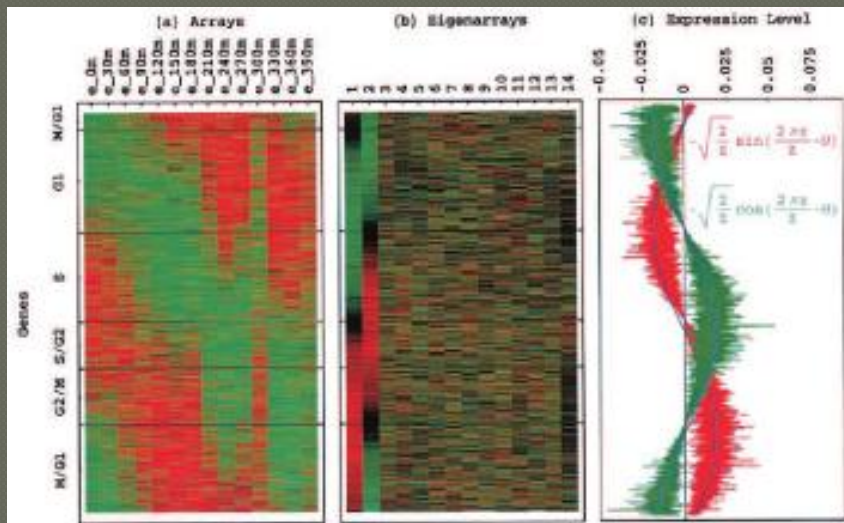
- All my colleagues: Nicolas, Felipe, Brice, Guillaume, Hélène, Sebastian, François-Xavier.

- My collaborators: Sylvia Maiella and the members of Lars Rogge's and Sylviane Pied's laboratories.

- All the people from my doctoral school.

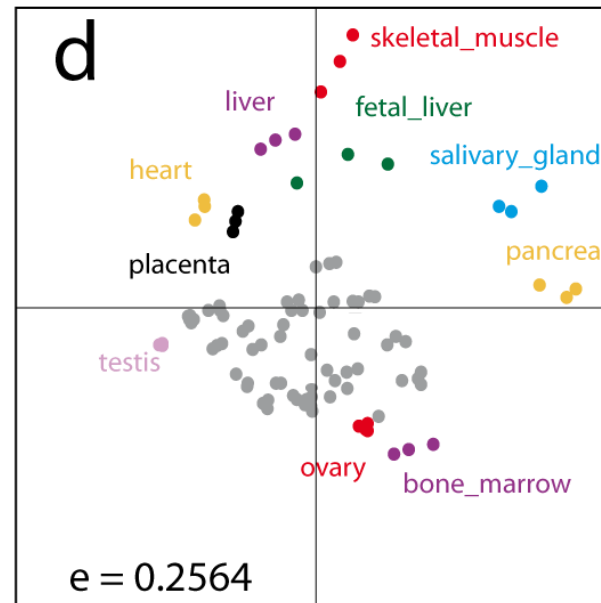
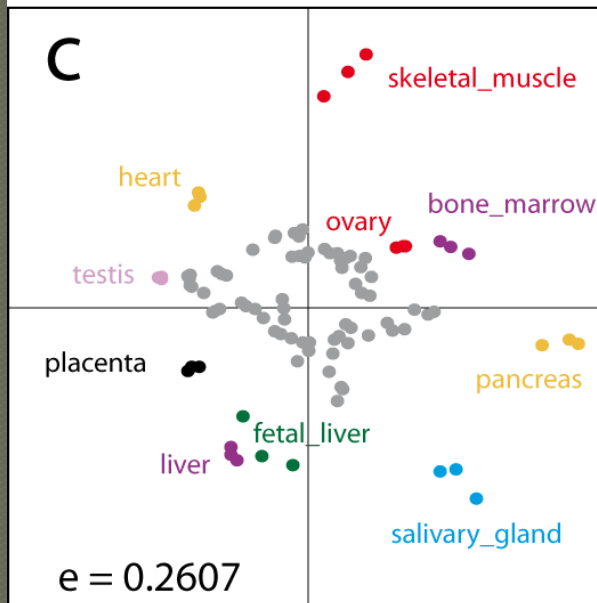
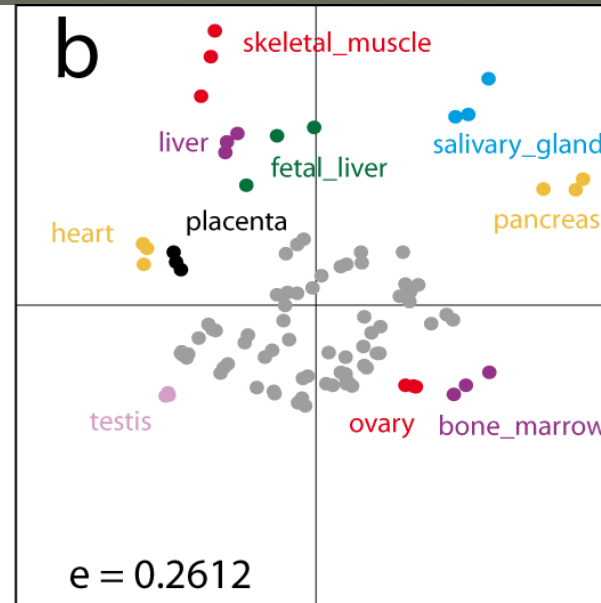
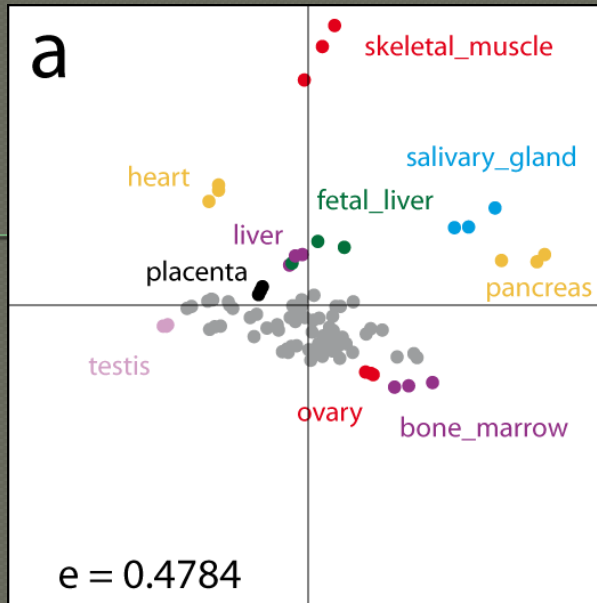
- Ma famille, mes amis.

Example of applications of dimensionality reduction techniques



Alter et al., PNAS, 2000

Ebbels, Bioinformatics, 2006



General view on linear analysis and new developments

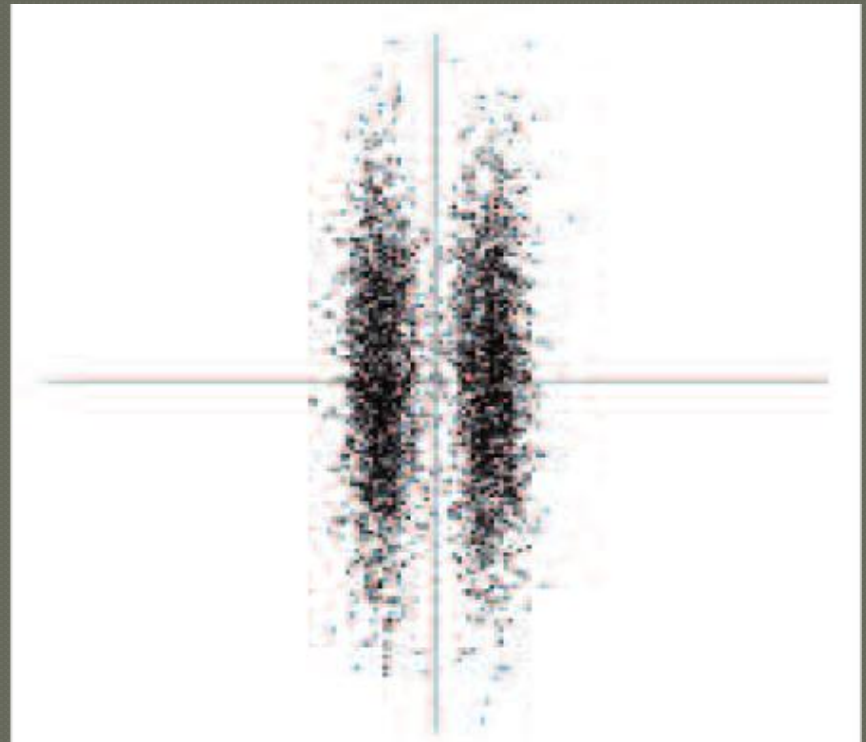
Orthogonality
(e.g.: PCA, Factor Analysis)



Independence
(i.e.: Independent Component Analysis)

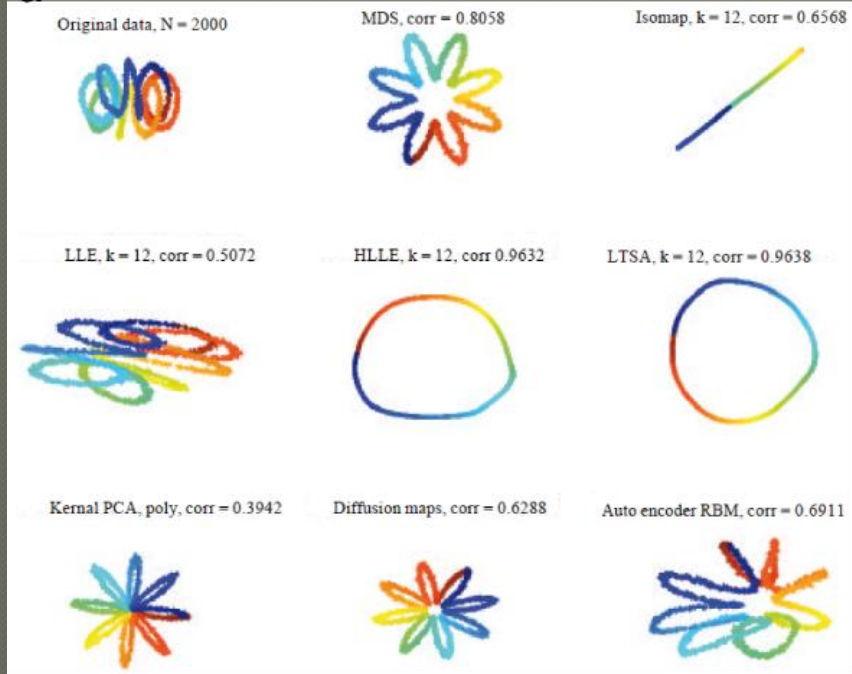


Decoster, 1998

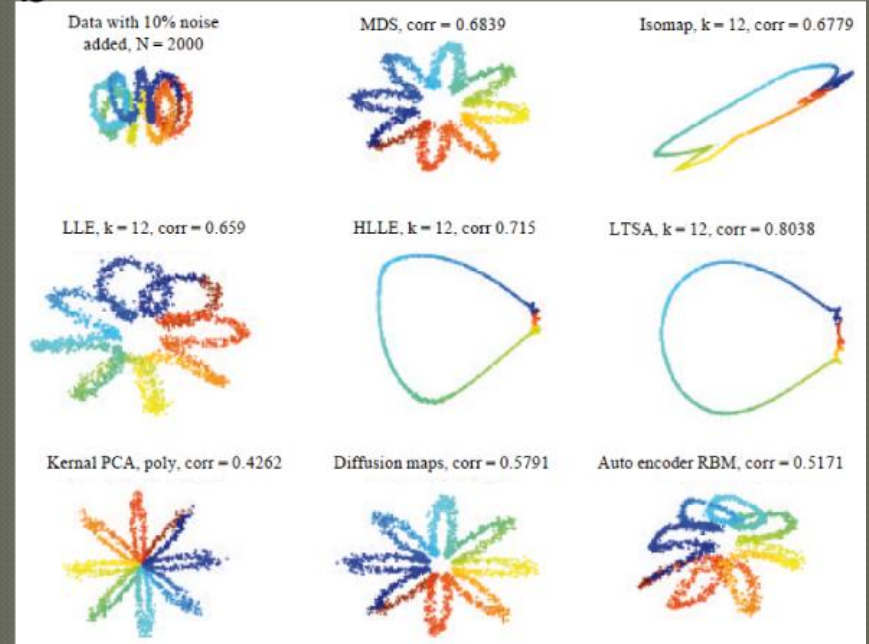


Effect of noise

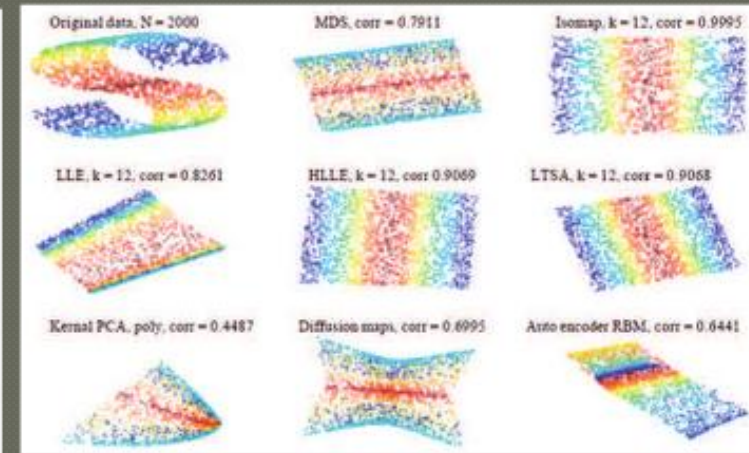
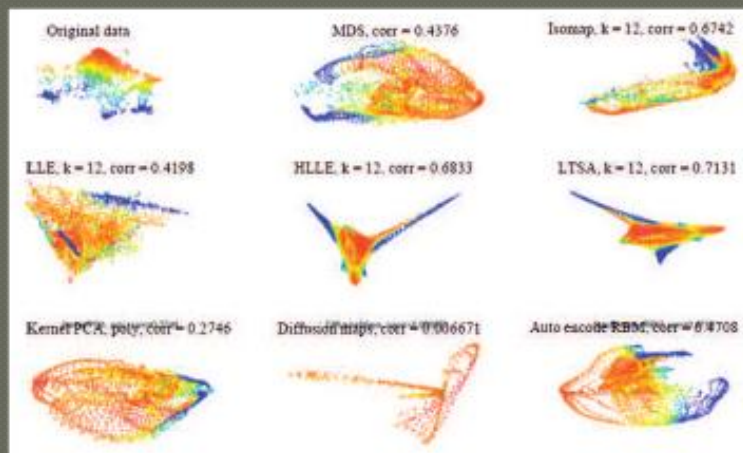
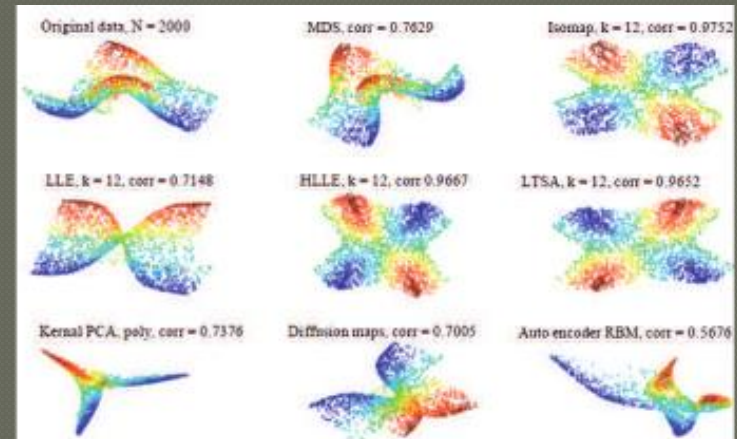
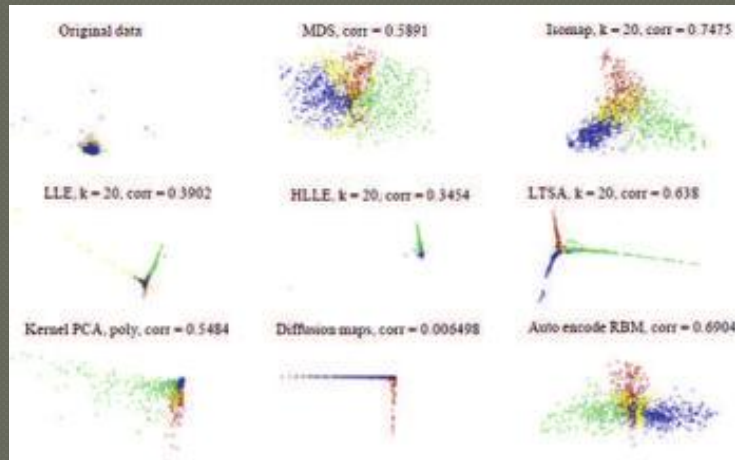
a



b

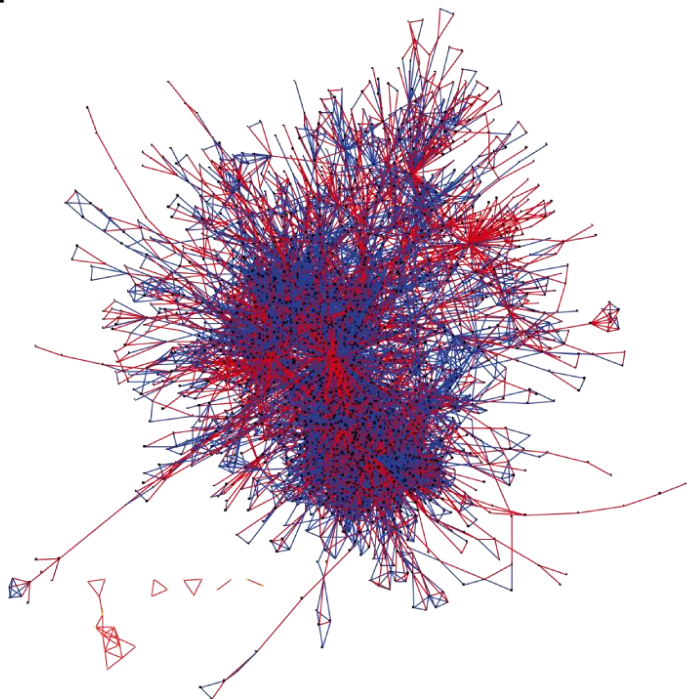


A great diversity of results given by each dimensionality reduction technique

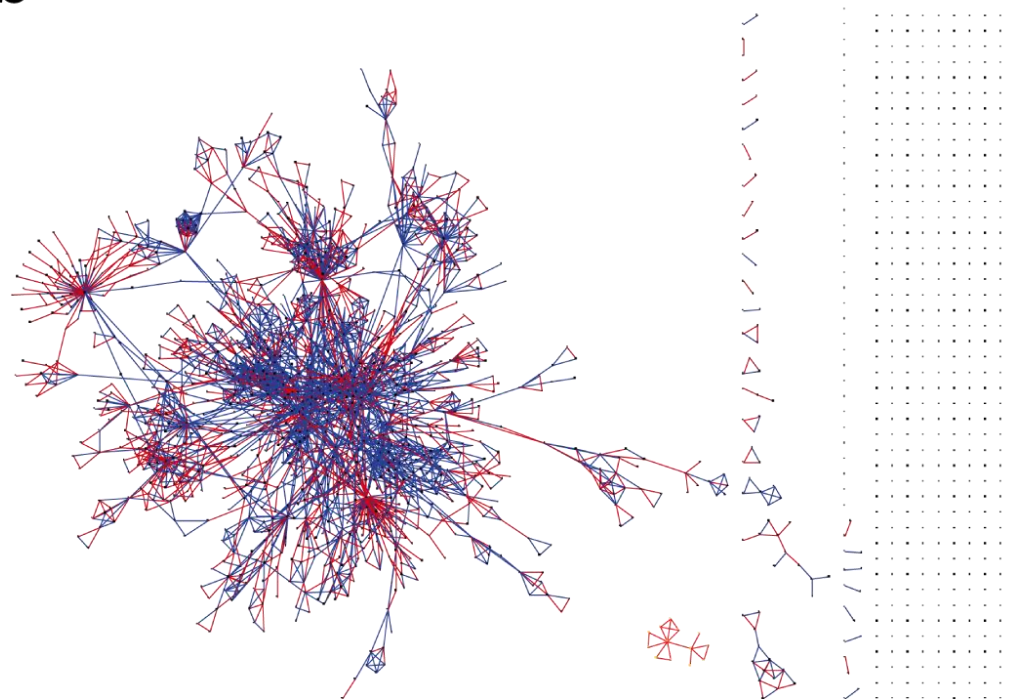


Tsai F., Journal of Artificial Intelligence, 2010

a

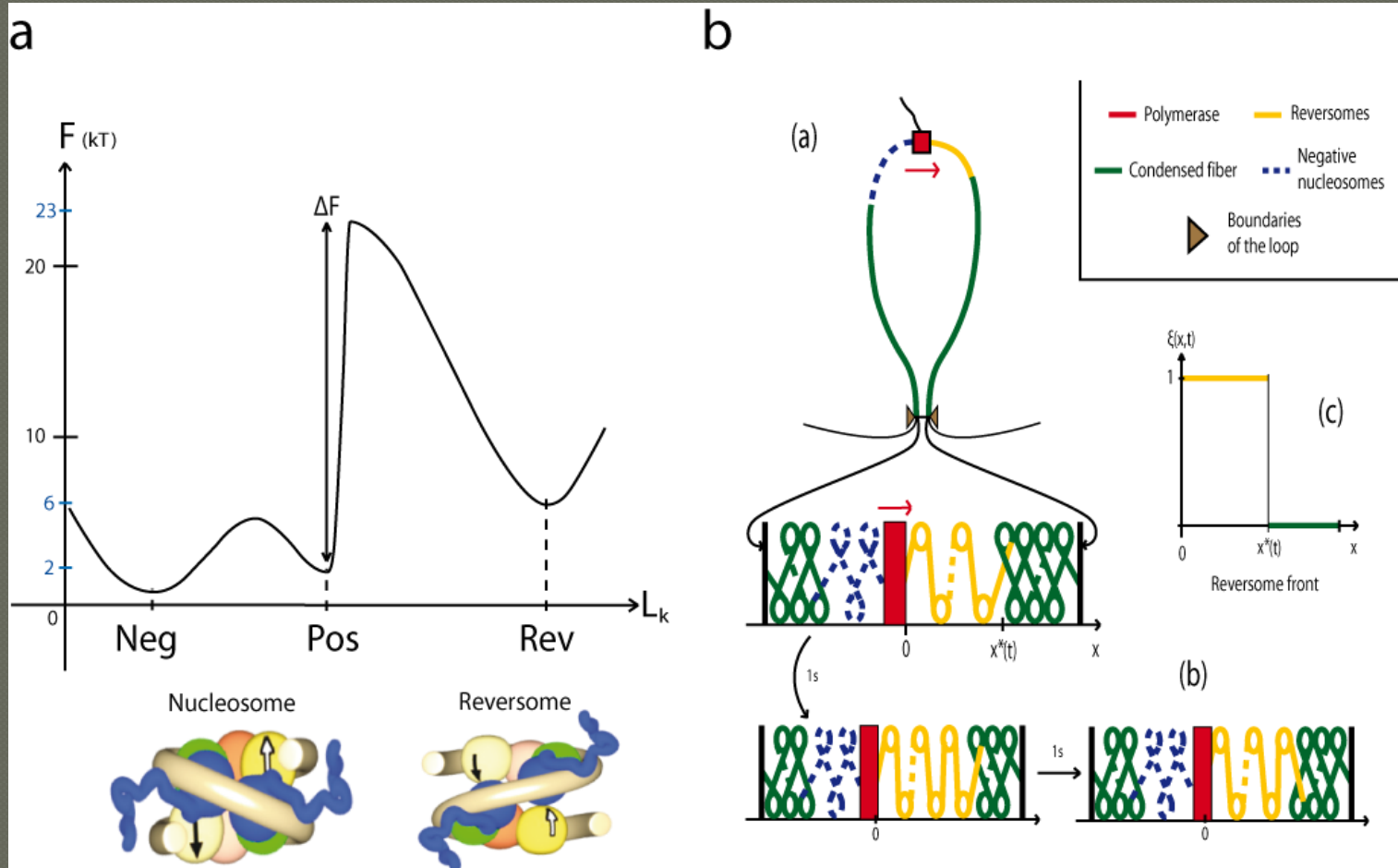


b



Chromatin during transcription

Bécavin et al., Biophysical Journal, 2009



a

Tconv VS nTreg



Tconv VS cTreg



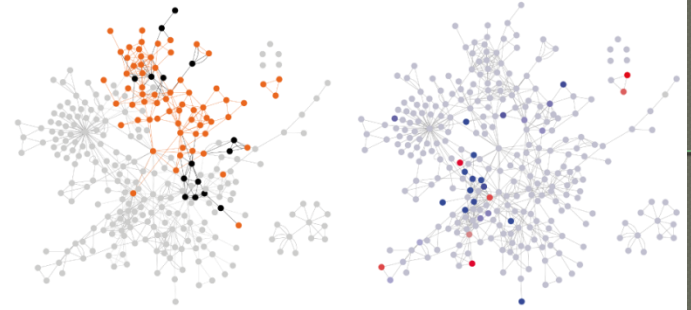
Tconv VS aTreg

**c**

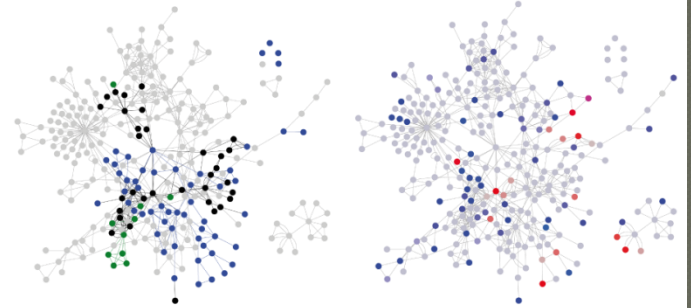
Multiple pathways species T cell activation
 Apoptosis signaling pathway DNA replication
 p53 pathway Cadherin signaling pathway
 Interleukin signaling pathway
 Inflammation mediated by chemokine and cytokine signaling pathway

b

Tconv VS nTreg



Tconv VS cTreg



Tconv VS aTreg

**d**

Sub-menu

Top-menu

Input table(s)

Graphics menu

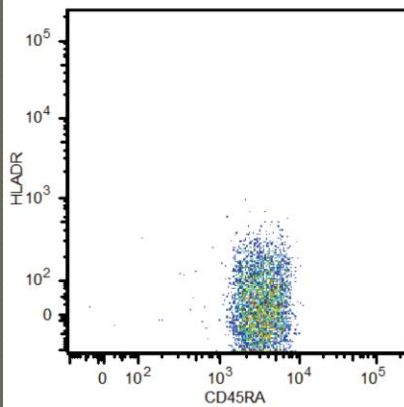
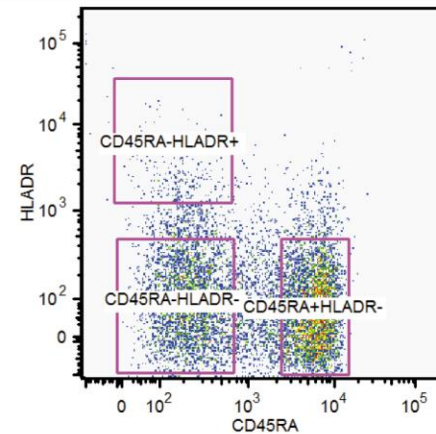
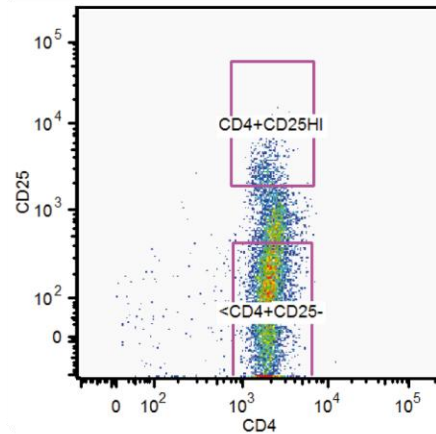
The screenshot shows the 'ace.map version 1.0 - svd' application window. The interface is divided into several functional areas:

- General menu (left):** A vertical list of options including file, kat, pcc, data entry, project, merge, subtraction, filter, kinetics, svd (highlighted in red), geo, leo, cluster, configuration, and exit.
- Progress bar (top):** A horizontal bar with buttons for '[add by bc]', '[remove]', and '[construct]'.
- Information table (top center):** A table with columns 'bc ID', 'file', 'type', 'cd1', 'cd2', and 'c'. It lists data for adrenal_gla... and bone_marro... files.
- Output table (middle):** A table with columns 'ID', 'file', and 'c'. It shows a single entry with ID 'a' and file '100614150051'.
- Table/Annotation/Graphics panel (right):** A large table with columns 'PROBE', '1S', '1W', '1A', '2S', '2V', '2A', '3S', and '3V'. The row for probe '100093' is highlighted in red. Below the table are search and probe info sections.

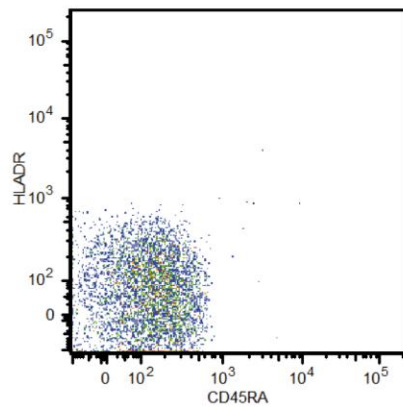
Arrows indicate the mapping of labels to these components: 'Sub-menu' points to the left menu; 'Top-menu' points to the progress bar; 'Input table(s)' points to the top-center table; 'Graphics menu' points to the right panel. A red box highlights the 'svd' option in the general menu.

General menu Progress bar Information table Output table Table/Annotation/Graphics panel

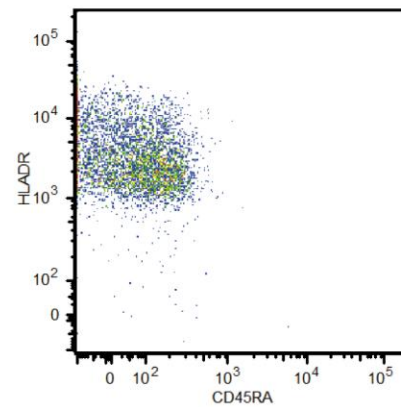
Treg purification using FACS



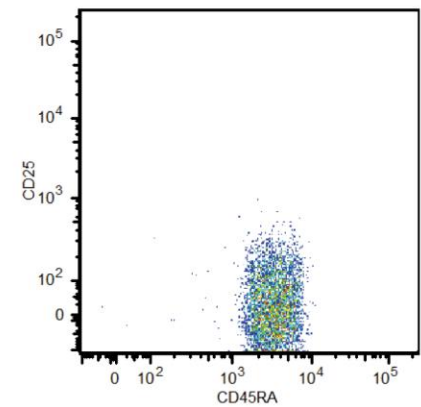
nTreg



cTreg



aTreg



Tconv

