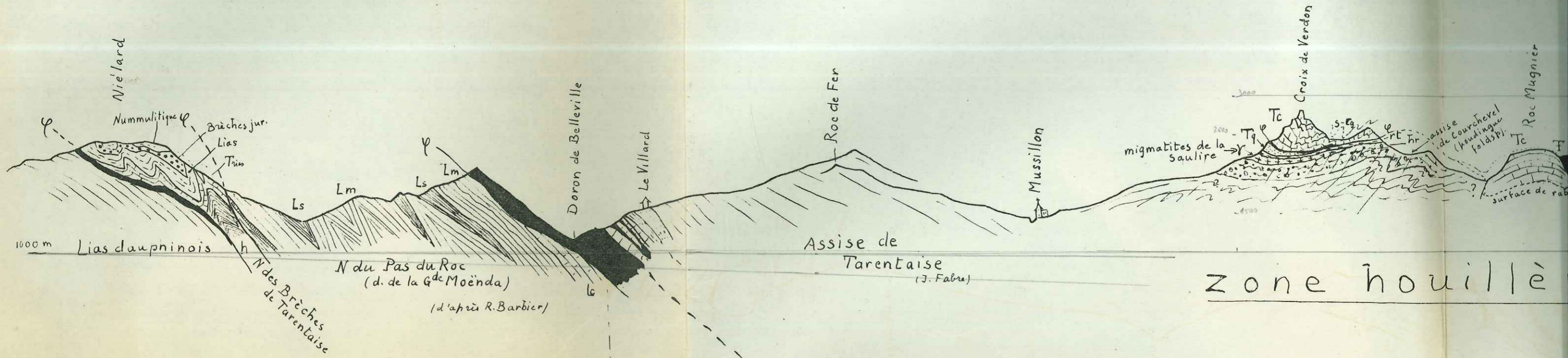


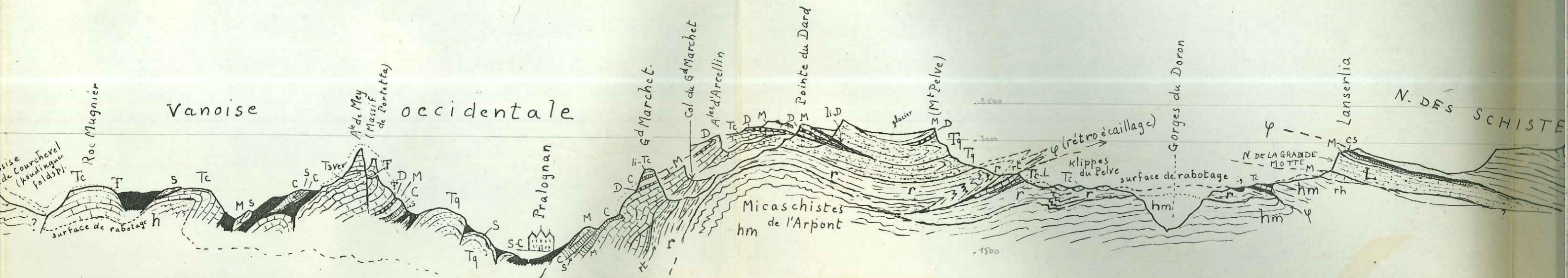
WNW



Coupes

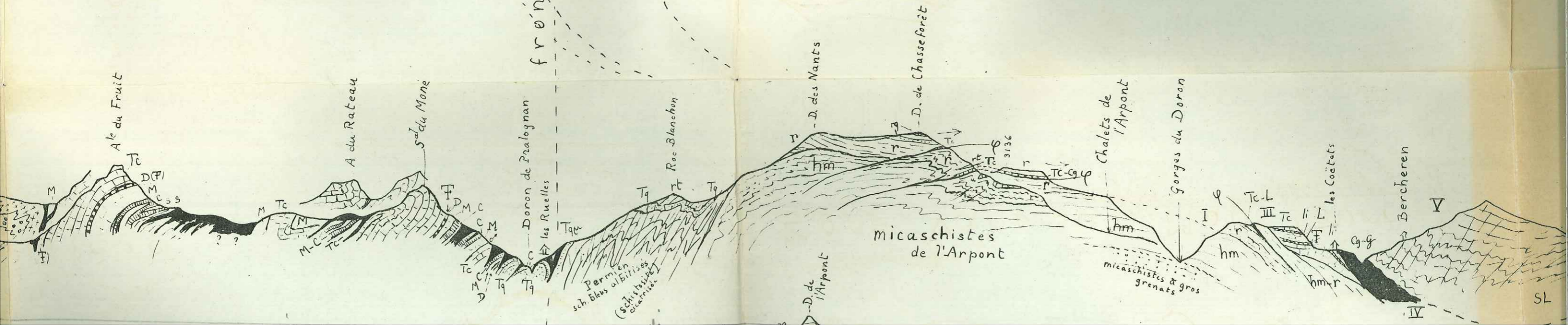
à 1/50.000

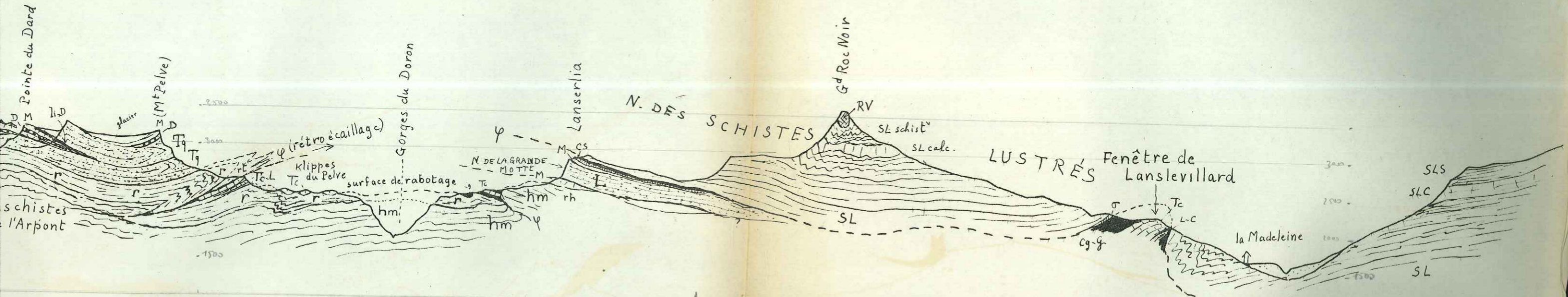
à travers les massifs de Vanoise méridionale.



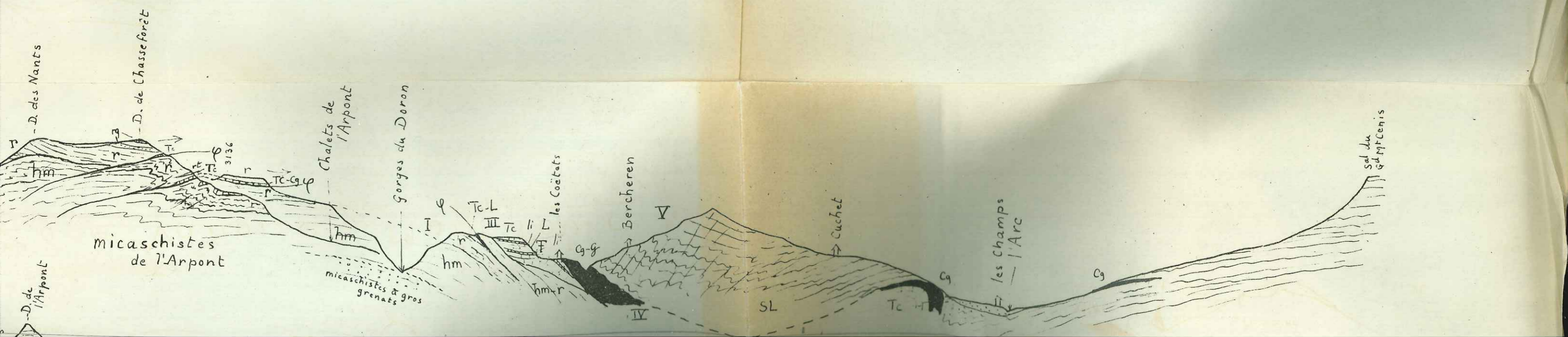
Guillère

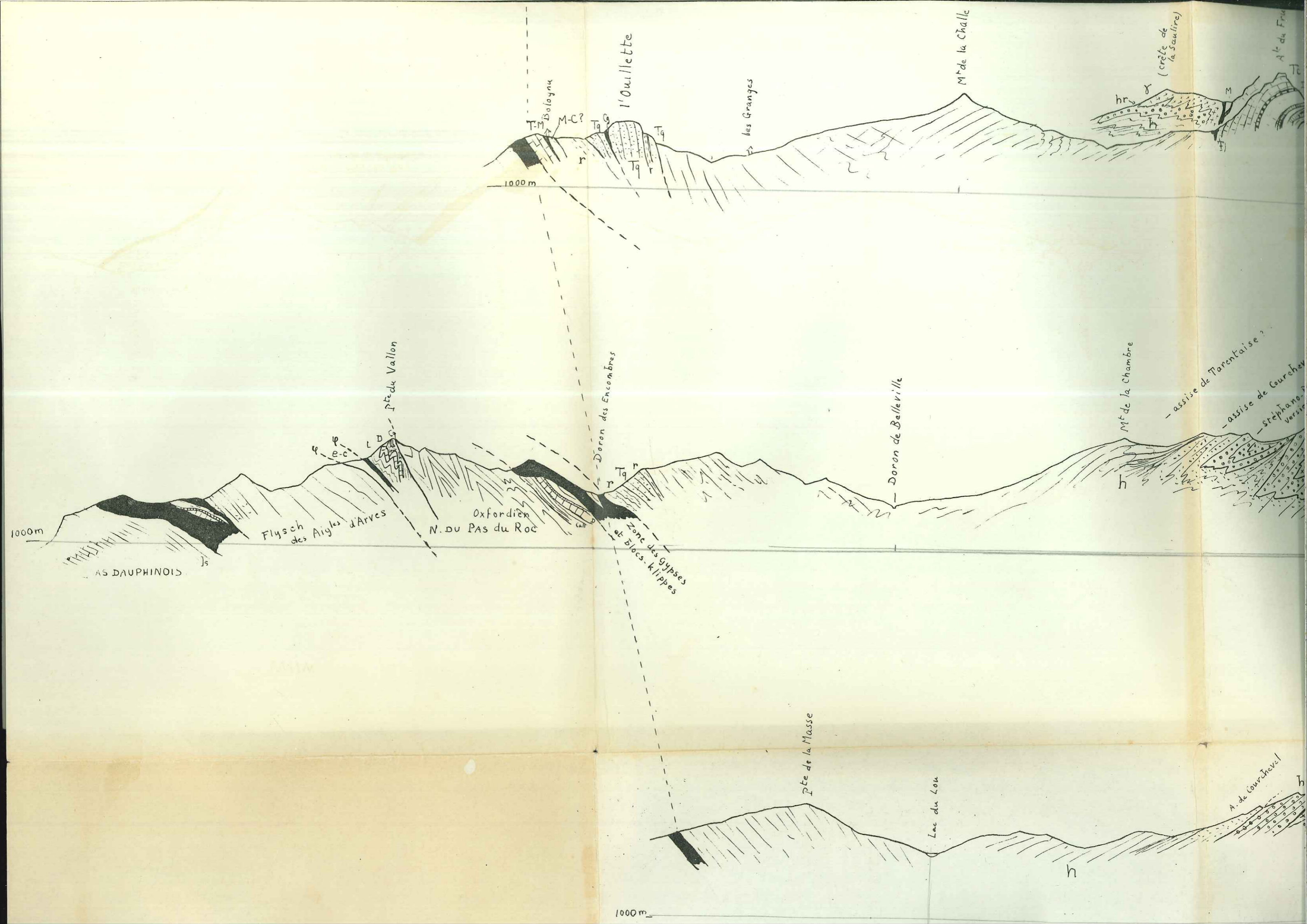
Zone Vanoise - Mont Pourri

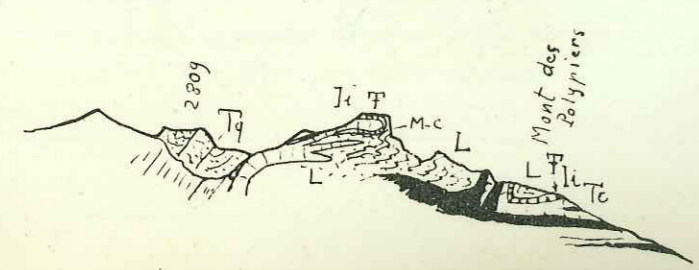
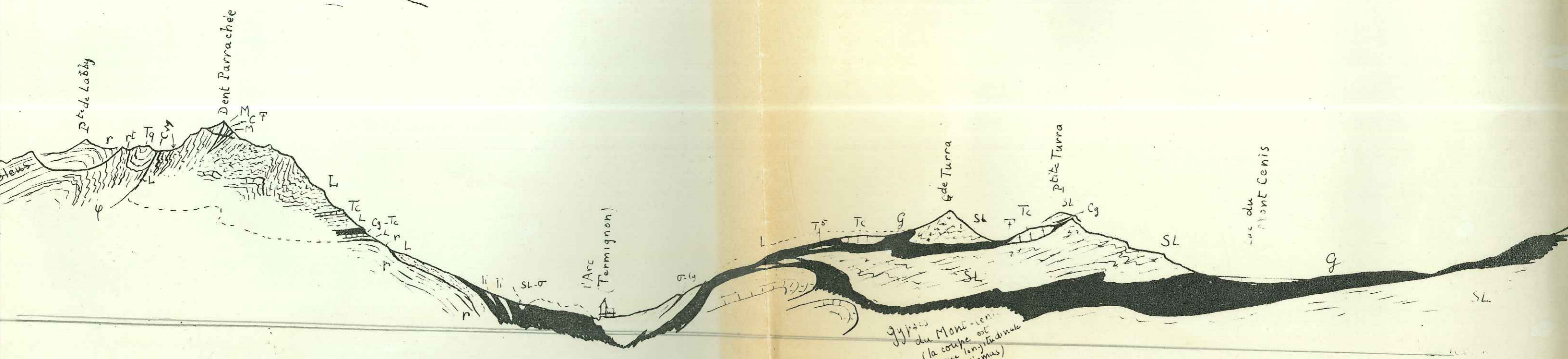
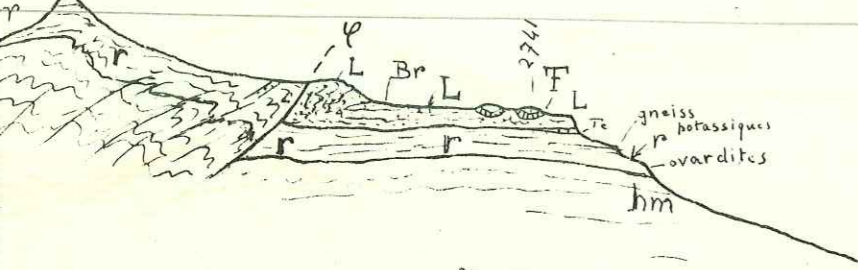
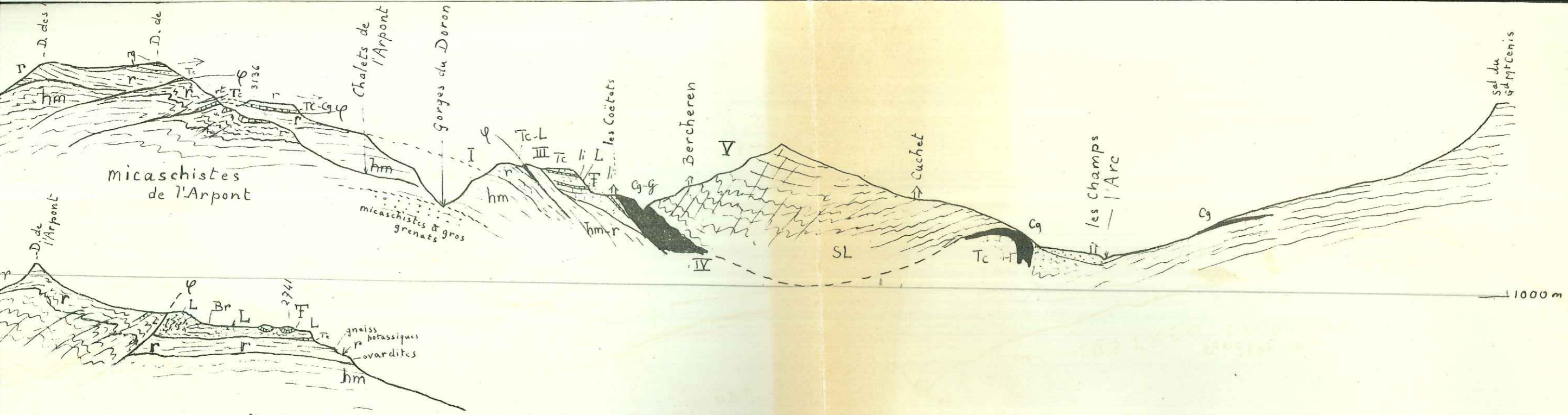


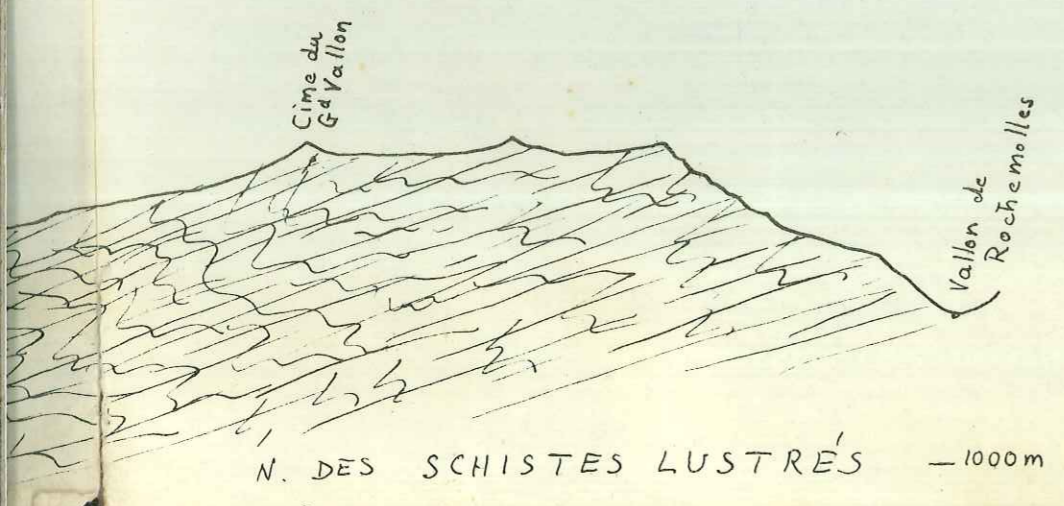
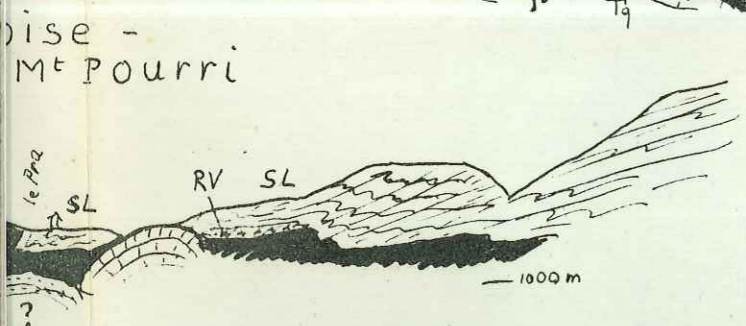
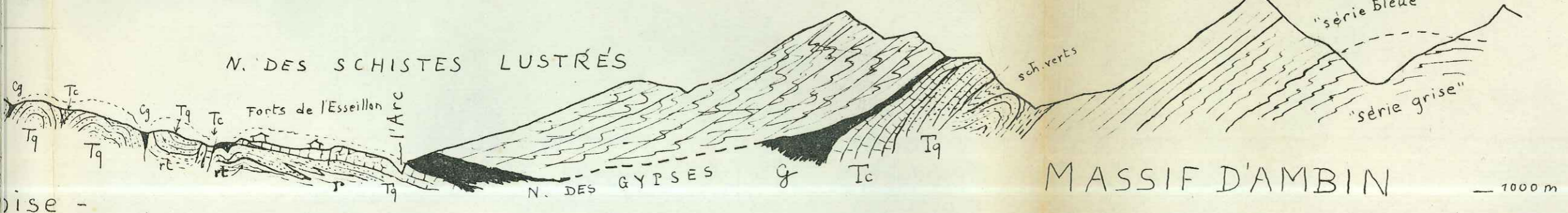
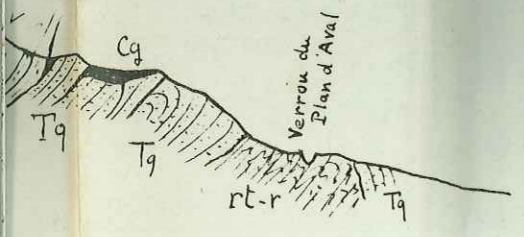


Zone Vanoise - Mont Pourri



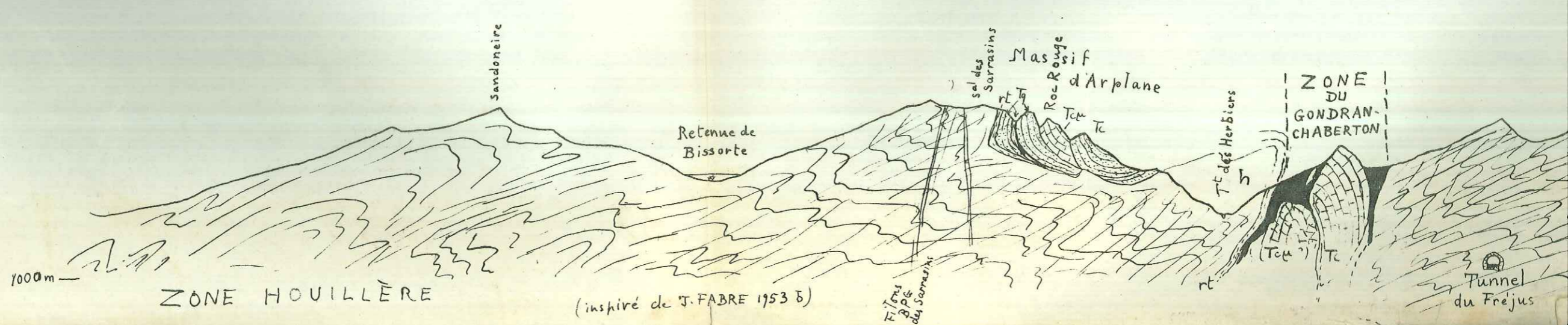
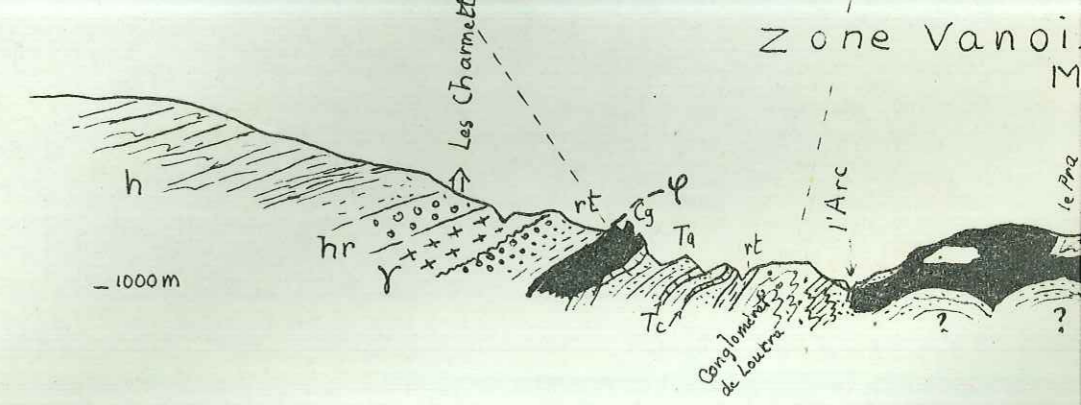
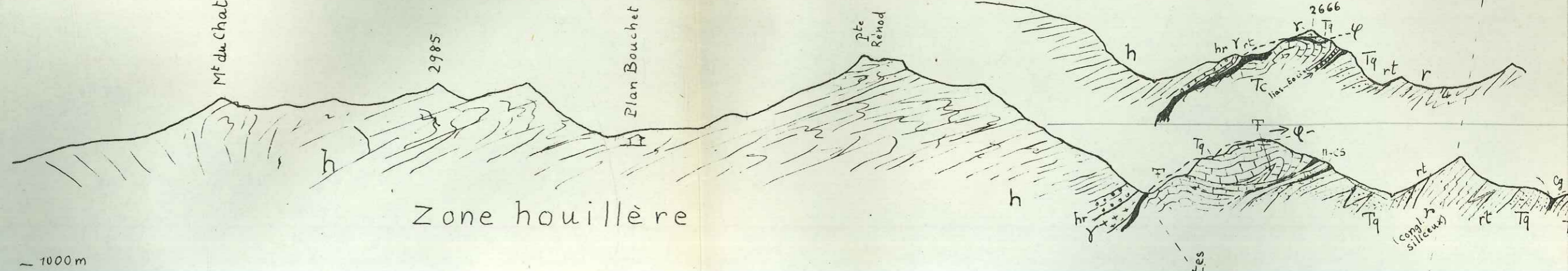
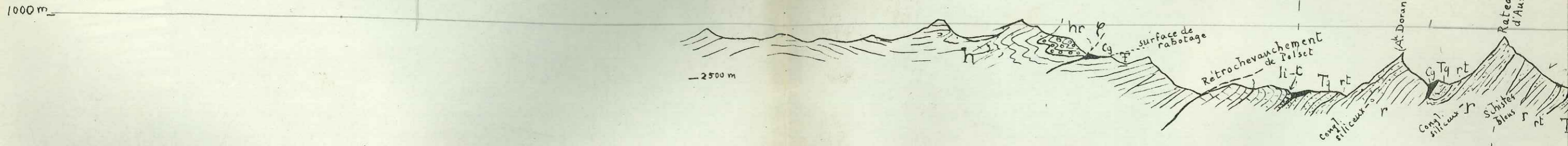
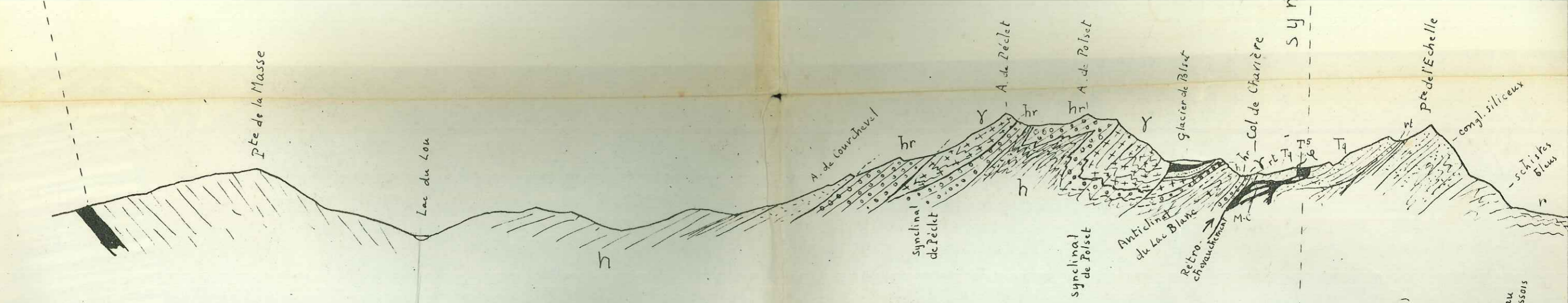


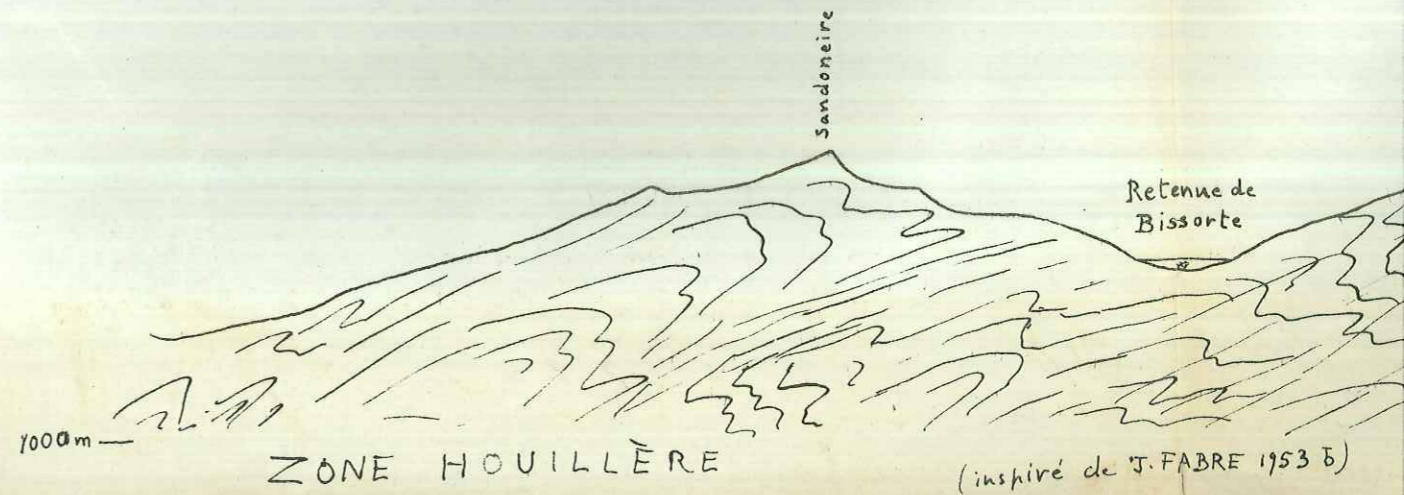
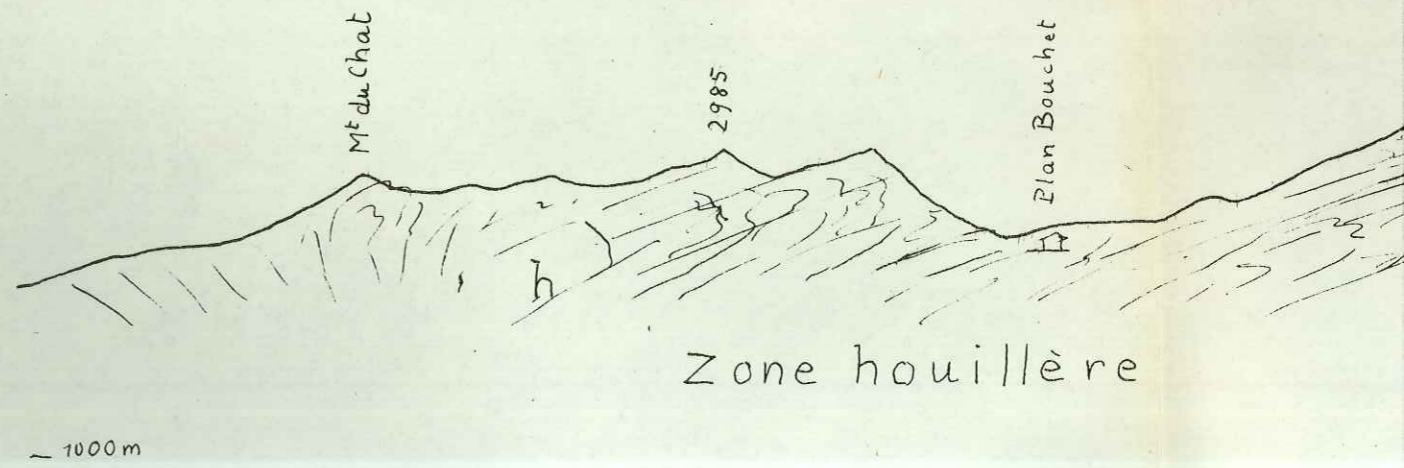
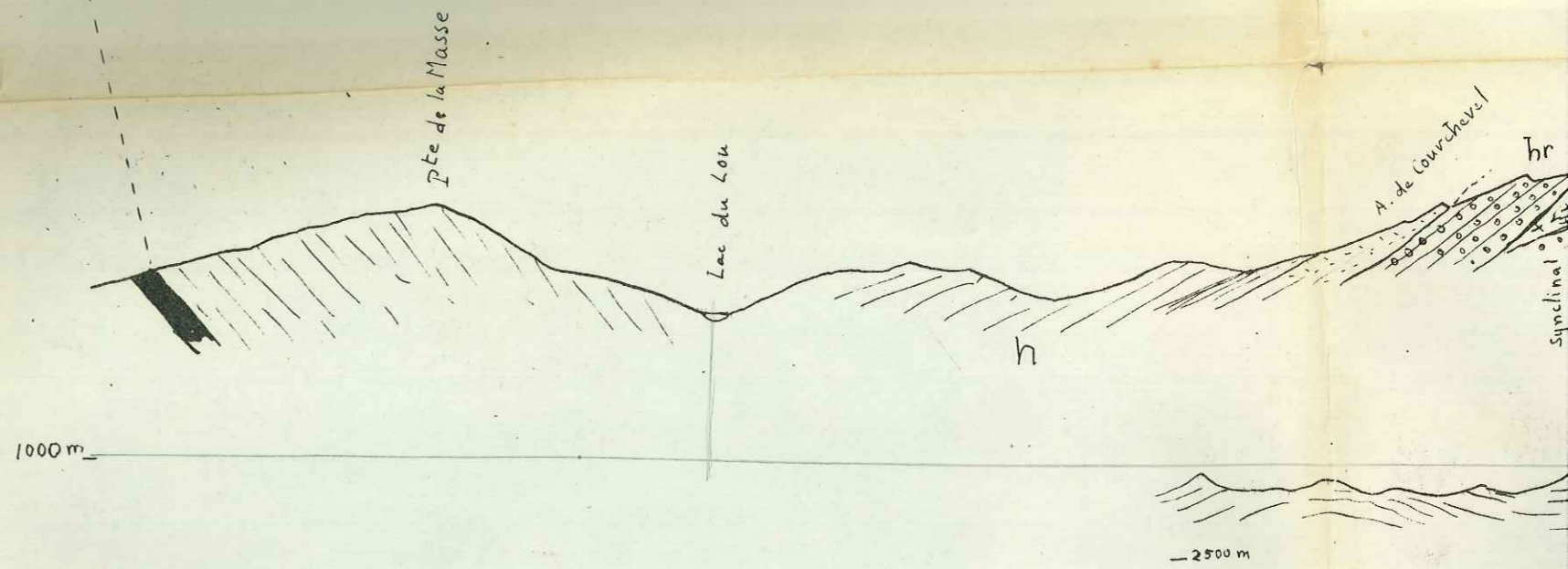




ise -
Mt Pourri

MASSIF D'AMBIN

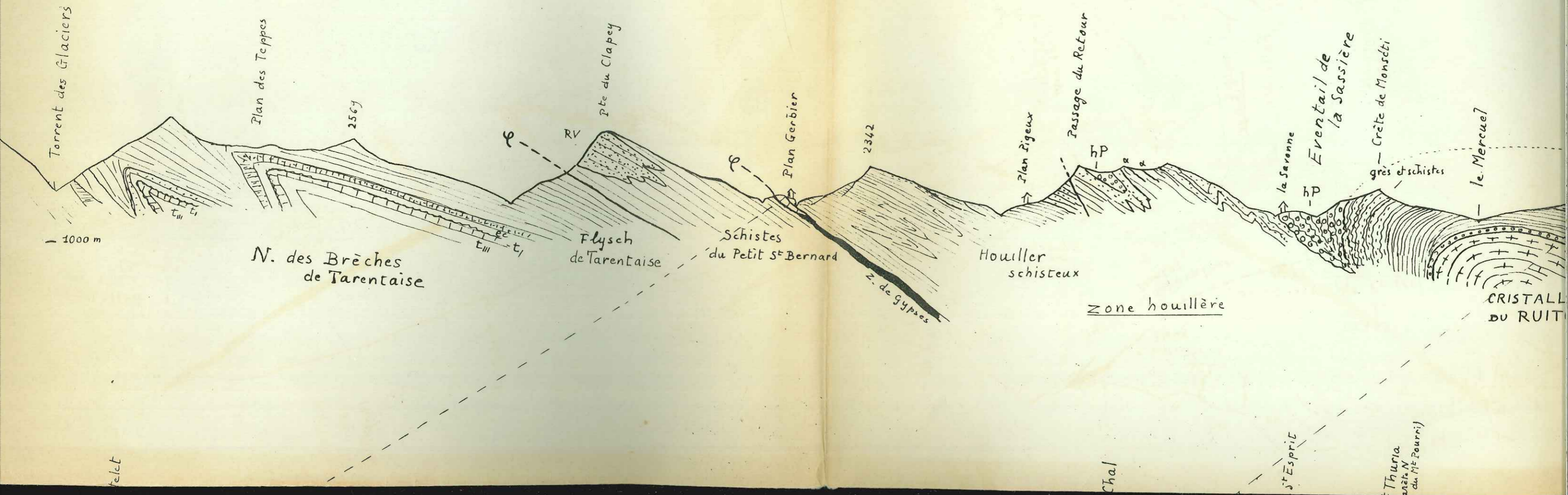




NW à WNW

à 1

à travers les mass



selct

Chal

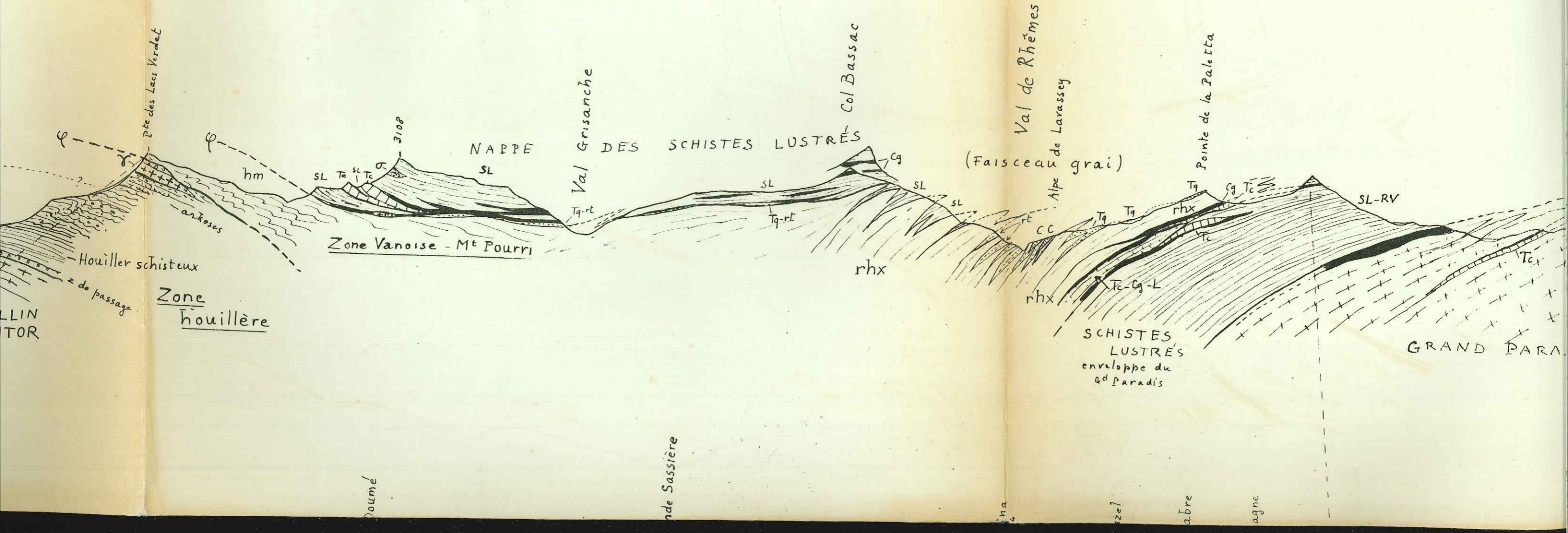
St Esprit

Thauria
du Mt Pourri

Coupes

1/50 000°

sifs de Vanoise septentrionale



LLIN
TOR

Dourmé

nde Sassièrè

na

zel

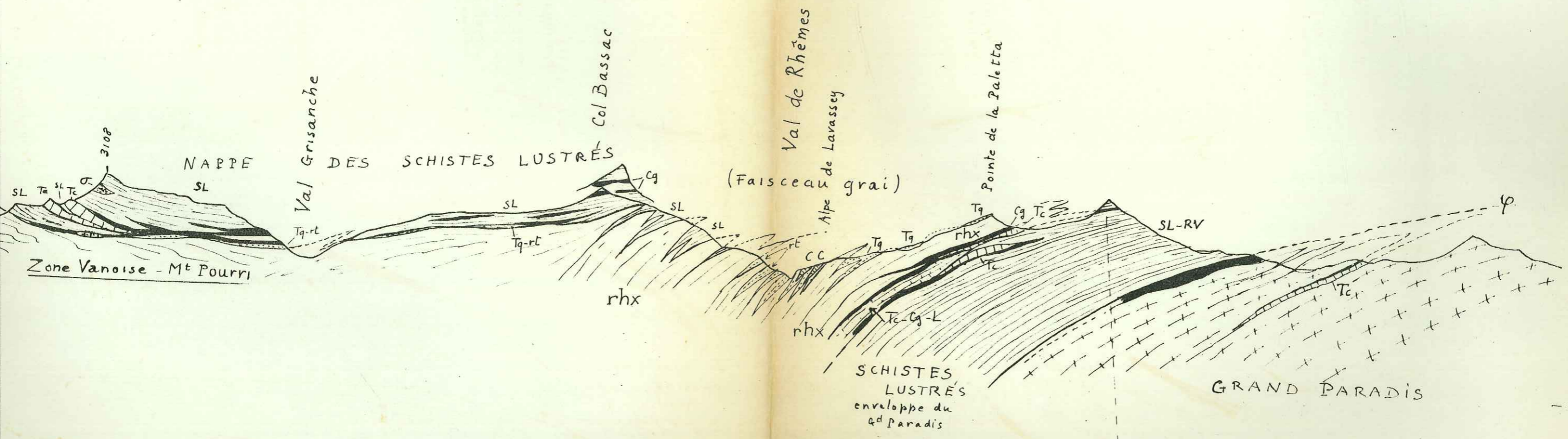
abre

agne

GRAND PARA...

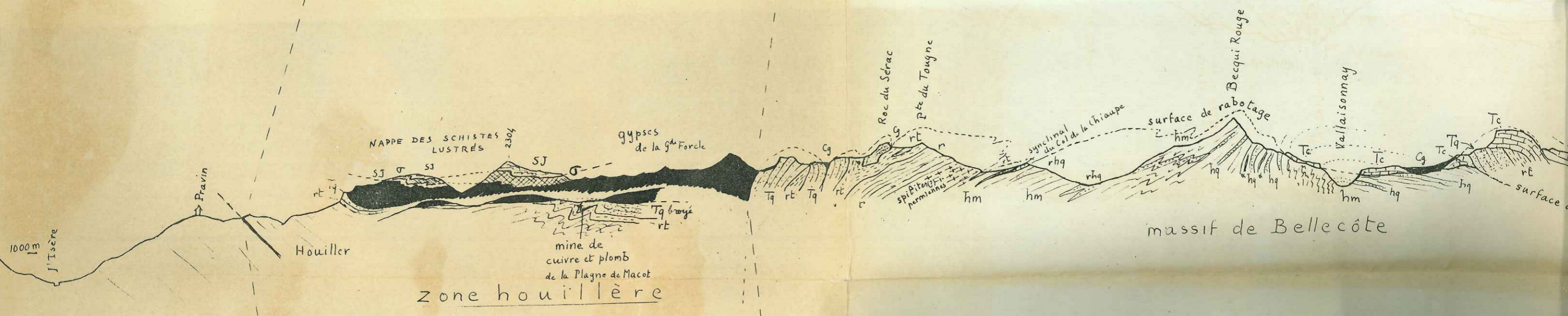
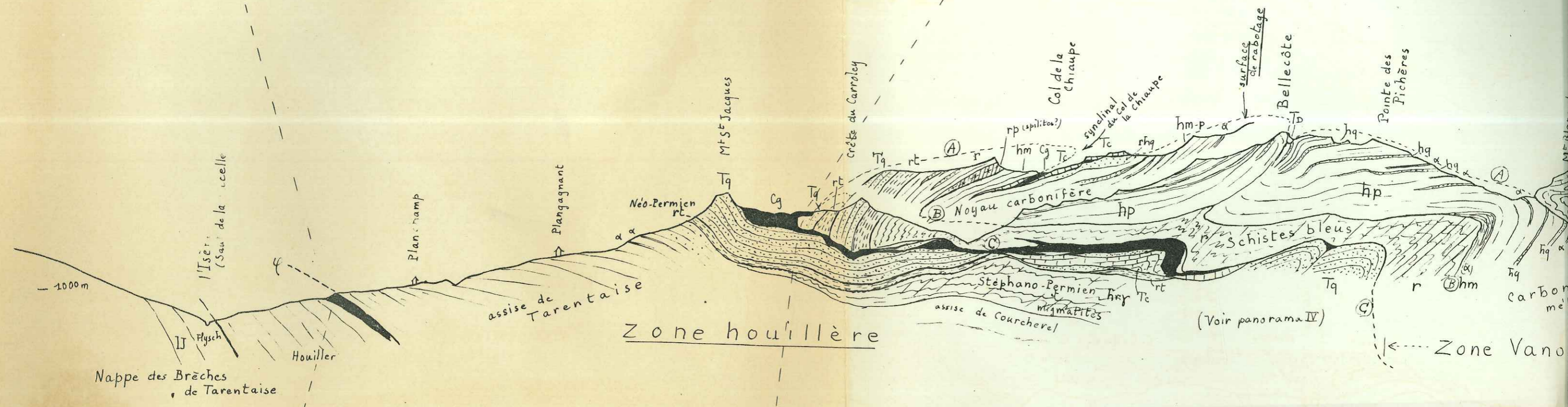
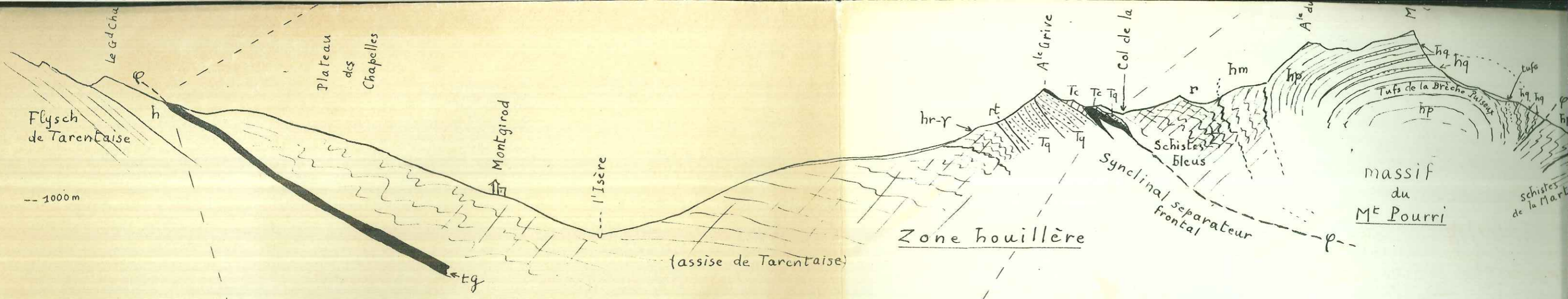
entrionale

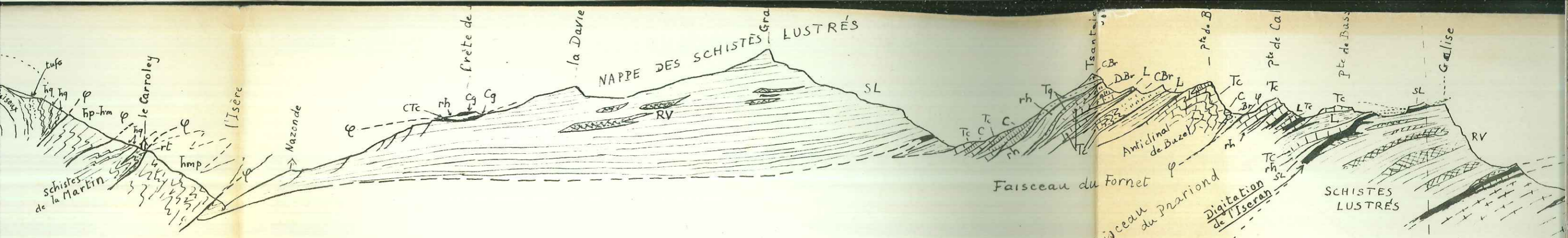
SE à ESE



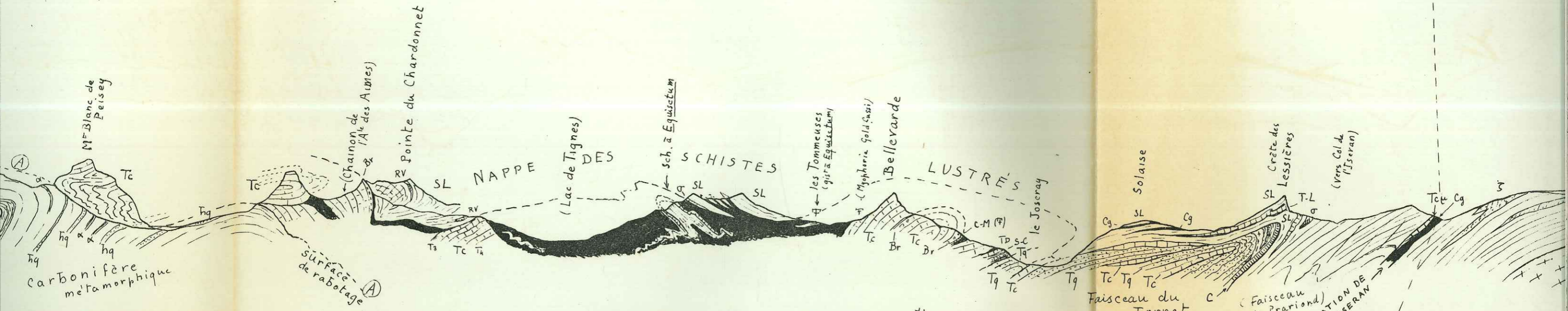
Doumé
 nde Sassièrè
 na
 zel
 abre
 agne

1000m

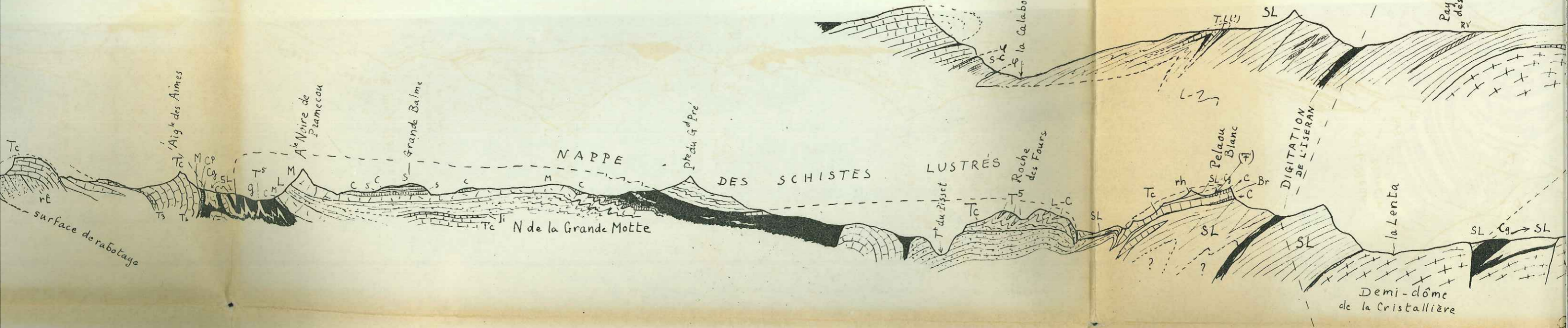


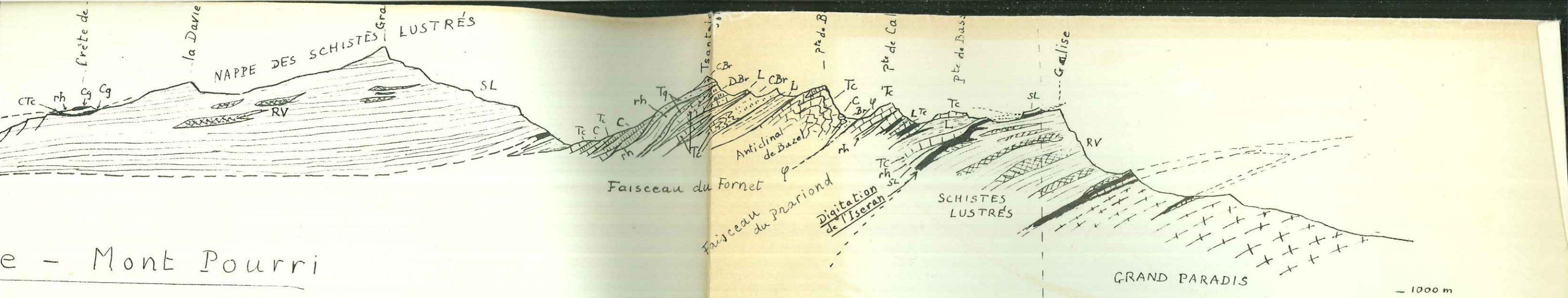


Zone Vanoise - Mont Pourri

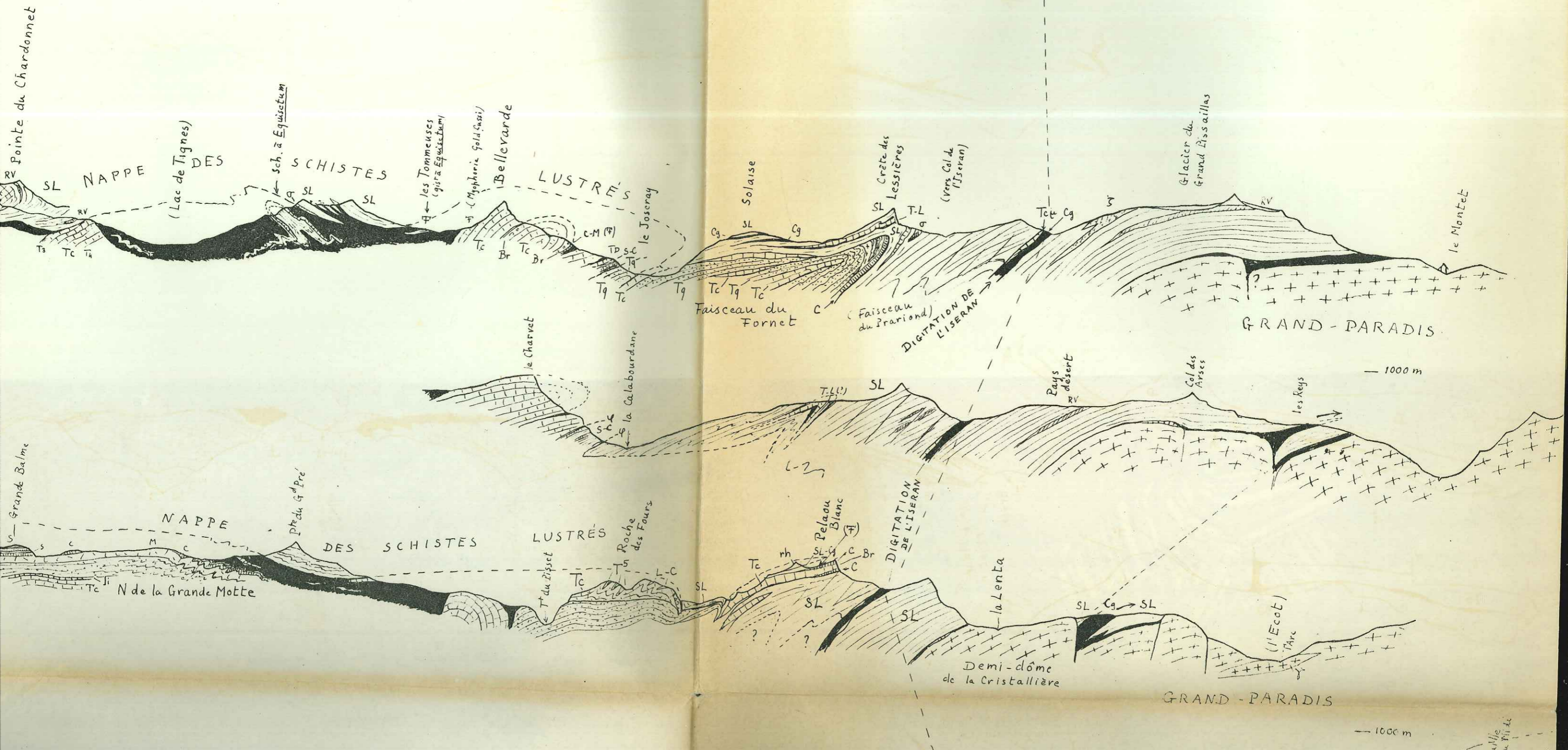


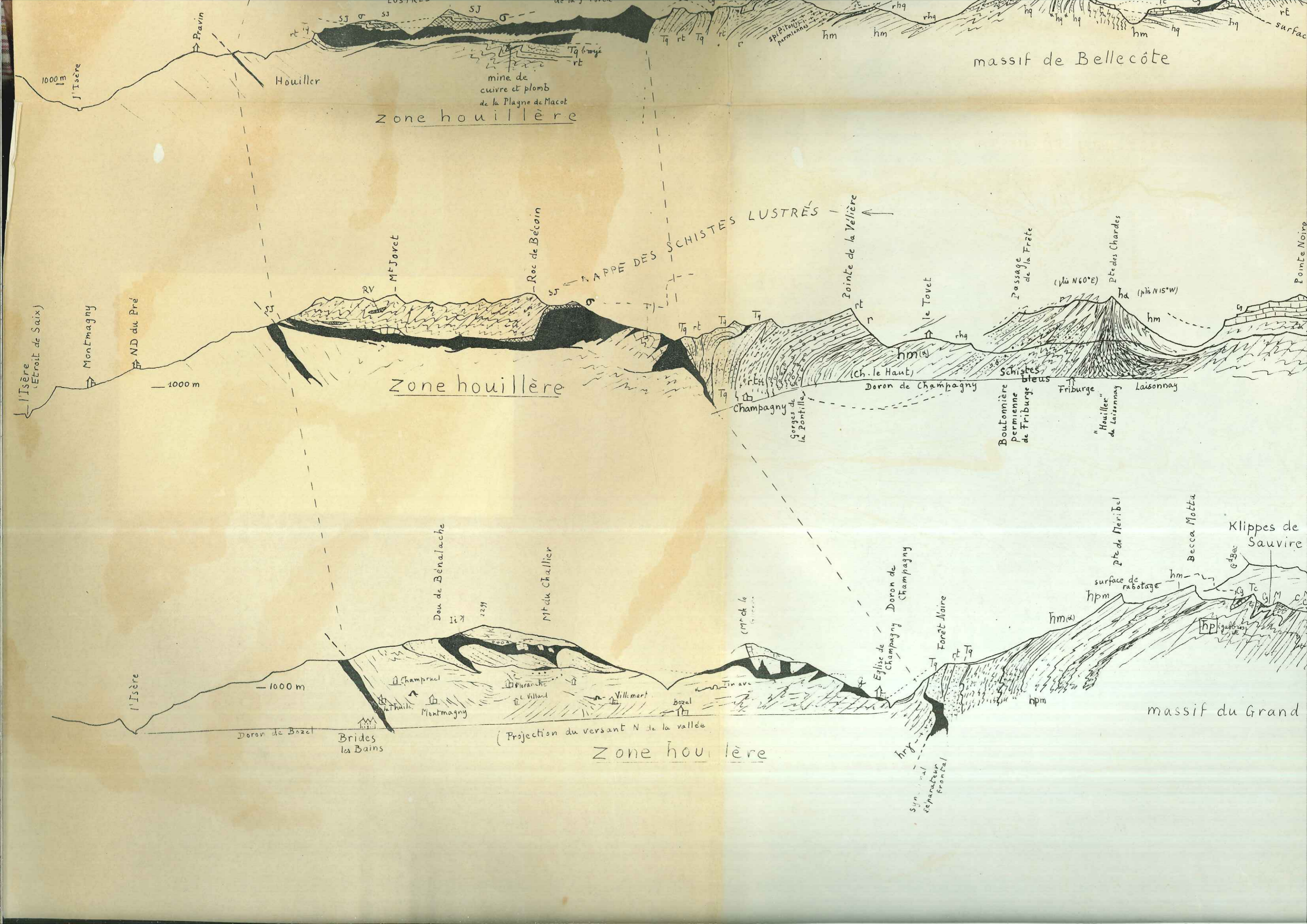
Zone Vanoise - M^e Pourri

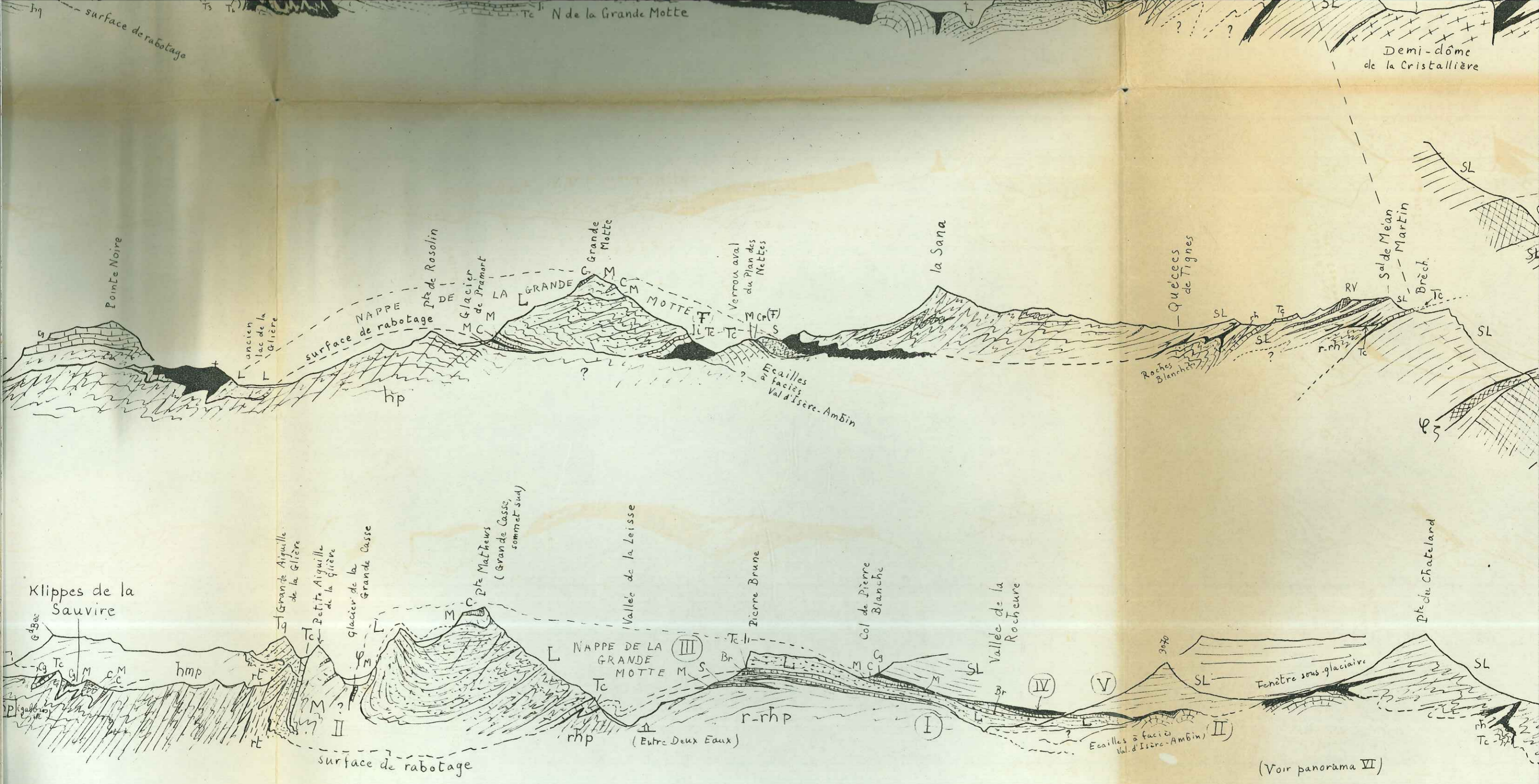




e - Mont Pourri



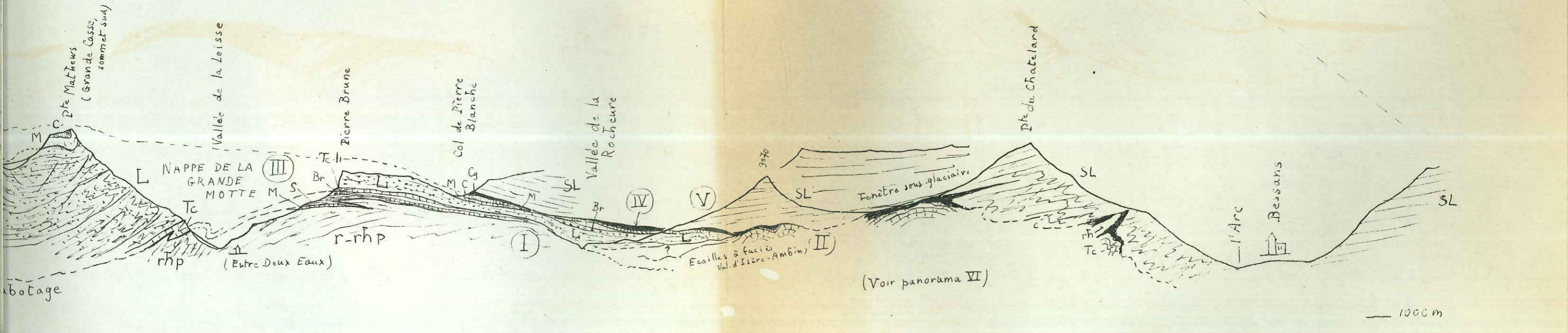
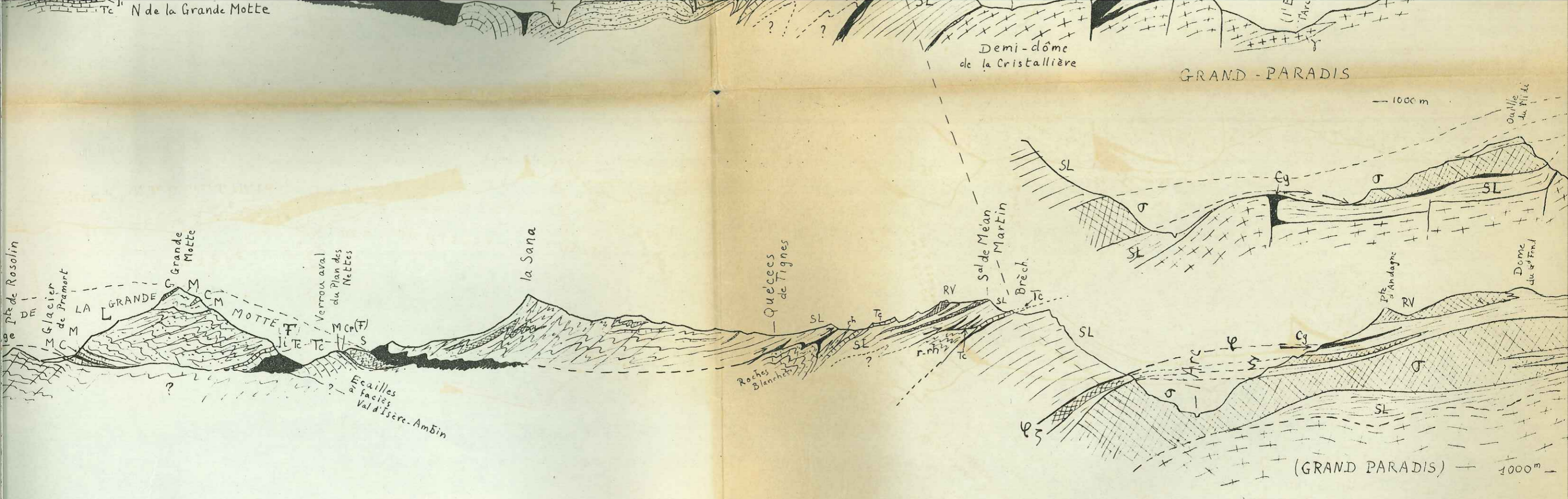




du Grand Bec

Zone Vanoise - M^t Pourri

(Voir panorama VI)



Zone Vanoise - Mt Pourri